

A List of Elaterid-Fauna from Ryûkyû Archipelago
collected by the Society of Scientific Survey, Kinki
University, with the Descriptions of some new Forms
“The Snappers of Island (V)”

By
Takashi KISHII

Reprinted from
BULLETIN OF THE HEIAN HIGH SCHOOL
KYOTO, JAPAN
No. 16, July, 1972

A List of Elaterid-Fauna from Ryûkyû Archipelago
collected by the Society of Scientific Survey, Kinki
University, with the Descriptions of some new Forms
“The Snappers of Island (V)”

By
Takashi KISHII

(Biological Laboratory, Héian High School, Kyôto, Japan)

In this series, in which 1st publication was reported in 1959 as showing beneath*, I wish to make the list of the subfamily Elateridae from main islands belonging to Japan and its adjacent islets, and moreover to describe some new knowledge about this beetles.

As to present paper, in most respects I want to draw up a list of the snapping-beetles from Yaéyama islands containing Iss. Ishigaki-jima, Iriomote-jima and Yonaguni-jima, and adding it the samples from Is. Okinawa-hontô and Is. Amami-ohshima together. Now, the materials used in this studying and brought from the islands stated above, fortunately I had a chance to be requested to research and identify through the courtesy of Mr. Junzô Kitamura, student of Kinki University. And the samples came to hand owing to the good will of the members of the Society for Biological Research, Agricultural Department, Kinki University. They had the biological expedition in 1970 and 1971, under the management of Mr. Kôtarô Matsumoto, and all the fellows constituted and the detail of the action were as following below.

Members : K. Matsumoto as the leader, T. Masumoto as the subleader, M. Ishimura as the subleader, R. Matsuda, Y. Hama, S. Takasuka, M. Takisawa, K. Harada, K. Kurutobi, K. Ochiai, S. Nakagawa, M. Yamaguchi, T. Shirai, M. Kubota, I. Matoba, K. Miyake, T. Takino, Y. Shibata, O. Tamura, K. Abe, T. Marushige, and M. Ohkura.

Action detail : Is. Amami-ohshima, March 28 to April 6, and June 27 to 30, 1970 ; Is. Okinawa-hontô, July 5 to 6, 1971 ; Is. Ishigaki-jima, July 8 to 11, 18 to 22, 28 to Aug. 3, and Aug. 16 to 21, 1971 ; Is. Iriomote-jima, July 10 to 27, and Aug. 4 to 10, 1971 ; Is. Yonaguni-jima, July 12 to 16, and Aug. 12 to 15, 1971.

Before going further I wish to express my cordial thanks to Mr. J. Kitamura, Mr. K. Matsumoto and the members of the Society for Biological Research, Agricultural Depart-

-
- * I. Elateridae of Is. Yaku-shima, Bull. Heian H. S., 3 : 1-24, 1959.
II. Elateridae of Is. Tsushima, ditto, 5 : 1-56, 1961.
III. Elateridae of Iss. Rishiri-tô, Rebun-tô and Todo-jima, ditto, 7 : 1-31, 1962.
IV. Elateridae of Iss. Awa-shima, Hegura-Jima and Nanatsu-Jima, ditto, 8 : 1-38, 1964.

ment, Kinki University, for their kindness specially placing the valuable collection at my disposal.

In the upshot, all the examples used in this studying and the type specimens of new forms are preserved in my collection and also in the members' collection of the expedition.

Subfamily Hemirhipinae

1. *Tetrigus lewisi* Candèze, 1873 “*Oh-kushihige-kometsuki*”

Tetrigus lewisi Candèze, 1873, Mém. Soc. Sc. Liège, V(2) : 6 (Japan & China).

Tetrigus grandis Lewis, 1879, Ent. Monthl. Mag., XVI : 155 (Nagasaki).

Tetrigus lewisi : Okamoto, 1924, Bull. Agr. Ex. St. Gov. Gen. Chôsen, I(2) : 182 (Corea & Loochoo).

Tetrigus lewisi : Van Zwaluwenburg, 1957, Ins. Micronesia : 13 (Okinawa, Laos, China, Japan & Bonins).

Specimens examined : Is. Ishigaki-jima, Mt. Banna-dake, a female, July 17, 1971, Y. Shibata leg. ; a male, Aug. 3, 1971, M. Kubota & K. Matsumoto leg.

Distribution : Japan (Hokkaidô, Honshû, Is. Kammuri-jima, Shikoku, Is. Oki-no-shima in Kôchi, Kyûshû, Is. Tsushima, Is. Amami-ohshima, Is. Okinawa-hontô, Is. Ishigaki-jima & Is. Chichi-jima in Bonins), Corea, Formosa, China & Indochina.

Up to date, this species has not been reported from Is. Amami-ohshima. But recently I fortunately had a chance to get an example from this island as follows.

Is. Amami-ohshima, Fukumoto to Mt. Yuwan-dake, a male, Aug. 4-6, 1964, T. Kishii leg.

Subfamily Chalcholepidiinae

2. *Paracalais putridus larvatus* (Candèze, 1874), *comb. nov.*

“*Oh-futamon-ubatama-kometsuki*”

Alaus larvatus Candèze, 1874, Rév. Mon. : 121 & 141 (Shanghai).

Alaus putridus : Szombathy, 1909, Ann. Mus. Nat. Hung., VII : 121 (Formosa) (non Candèze, 1857, from Java).

Alaus putridus : Miwa, 1929, Trans. Nat. Hist. Soc. Formosa, XIX (103) : 342 & 344 (Ishigaki & Ogasawara).

Alaus pini : Miwa, 1929, Trans. Nat. Hist. Soc. Formosa, XIX (102) : 237 (Formosa) (non Lewis, 1894, from Kyûshû & Honshû).

Alaus (Cryptalaus) putridus putridus : Ôhira, 1967, Trans. Shikoku Ent. Soc., IX(3) : 97 (Naka-no-shima, Amami-ohshima, Toku-no-shima, Okinawa, Ishigaki, Iriomote & Yonaguni).

Paracalais putridus putridus : Ôhira, 1969, Bull. Aichi Univ. Educ., 18 (Nat. Sci.) : 89-90 (Amami-ohshima & Iriomote).

Alaus putridus larvatus : Ôhira, 1971, New Ent., XX (2-3) : 21-22 & 24-25, 2 figs.

Specimens examined : Is. Ishigaki-jima, Mt. Banna-dake, 2 males & a female, July 17, 1971 ; 2 males, July 28, 1971 ; 2 females, July 30, 1971 ; 2 males & a female,

July 31, 1971 ; a female, Aug. 1, 1971 ; Y. Shibata leg. Is. Iriomote-jima, Hoshidate, a female, July 18, 1971, Y. Shibata leg. Is. Yonaguni-jima, Urabe, 4 males & a female, Aug. 11, 1971, K. Matsumoto leg.

Distribution : Japan (Is. Naka-no-shima, Is. Amami-ohshima, Is. Toku-no-shima, Is. Okinawa-hontô, Is. Ishigaki-jima, Is. Iriomote-jima & Is. Yonaguni-jima), Formosa, China & Indo-china.

Subfamily Agrypninae

3. *Adelocera* (*s. str.*) *sakaguchii* (Miwa, 1927) "Sakaguchi-hoso-sabikikori"
Lacon sakaguchii Miwa, 1927, Ins. Mats., II(1) : 14, Pl. I, f. 3 (Okinawa).
Adelocera (*s. str.*) *sakaguchii* : Ôhira, 1967, Trans. Shikoku Ent. Soc., IX(3) : 103, f. 20, 21, 22 (Is. Ishigaki, Is. Iriomote & Is. Yonaguni).
Specimens examined : Is. Ishigaki-jima, Mt. Banna-dake, a male, July 17, 1971 ; a male, Aug. 1, 1971, Y. Shibata leg.
Distribution : Japan (Is. Okinawa-hontô, Is. Ishigaki-jima, Is. Iriomote-jima & Is. Yonaguni-jima) & Formosa.
4. *Agrypnus* (*s. str.*) *bipapulatus sakishimanus* Ôhira, 1967 "Sakishima-munabiro-sabikikori"
Agrypnus sakishimanus Ôhira, 1967, Trans. Shikoku Ent. Soc., IX(3) : 100-101, f. 9 (Ishigaki & Iriomote).
Agrypnus (*s. str.*) *bipapulatus sakishimanus* : Ôhira, 1969, Bull. Aichi Univ. Educ., XVIII (Nat. Sci.) : 90-91, Pl. 1, f. A (Amami-ohshima).
Specimen examined : Is. Iriomote-jima, Hoshidate, a female, July 19, 1971, Y. Shibata leg.
Distribution : Japan (Is. Amami-ohshima, Is. Ishigaki-jima & Is. Iriomote-jima).
5. *Agrypnus* (*s. str.*) *scutellaris hamai* Ôhira, 1967 "Sakishima-shiromon-sabikikori"
Agrypnus scutellaris hamai Ôhira, 1967, Trans. Shikoku Ent. Soc., IX(3) : 99 (Is. Iriomote).
Agrypnus (*s. str.*) *scutellaris hamai* : Ôhira, 1970, Bull. Aichi Univ. Educ., XIX (Nat. Sci.) : 103 (Ishigaki).
Specimen examined : Is. Iriomote-jima, Hoshidate, a female, July 14, 1970, I. Matoba leg.
Distribution : Japan (Is. Ishigaki-jima & Is. Iriomote-jima).
6. *Sagojyo yuppe* Kishii, 1964 "Mizomune-hime-sabikikori"
Colaulon (*Sagojyo*) *yuppe* Kishii, 1964, Bull. Heian H. S., 8 : 31-33, 4 figs. (Is. Kuchi-no-erabu-jima).
Sagojyo yuppe : Ôhira, 1967, Trans. Shikoku Ent. Soc., IX(2) : 103, f. 13 & 14 (Amami-ohshima, Toku-no-shima & Iriomote-jima).
Specimen examined : Is. Amami-ohshima, Hatsuno, a male, June 30, 1970, I. Matoba leg.
Distribution : Japan (Is. Kuchi-no-erabu-jima, Is. Amami-ohshima, Is. Toku-no-shima & Is. Iriomote-jima).

7. *Brachylacon microcephalus difficilis* (Lewis, 1894) "Shiro-obi-chibi-sabikikori"

Lacon difficilis Lewis, 1894, Ann. Mag. Nat. Hist., XIII(6) : 29 (Nagasaki).

Lacon trifasciatus : Candèze, 1873, Mém. Soc. Roy. Sc. Liège, V(2) : 1 (Japan)
(non Candèze, 1864, from Ceylon).

Lacon microcephalus : Miwa, 1934, Fauna Elat. Japan : 70, 185, 248, Pl. I. f. 8
(Nara, Tosa, Nagasaki, Kumamoto & Tsushima) (non Motschulsky, 1858, from
Ceylon).

Adelocera (Brachylacon) microcephalus : Ôhira, 1954, New Ent., III(2-3) : 10.

Brachylacon microcephalus : Kishii, 1959, AKITU, VIII(3) : 57 (Is. Amami-ohshima).

Brachylacon (s. str.) microcephalus : Ôhira, 1967, Trans. Shikoku Ent. Soc., IX(3)
: 105 (Amami-ohshima, Toku-no-shima, Okinawa-hontô, Ishigaki & Iriomote).

Brachylacon (s. str.) microcephalus difficilis : Ôhira, 1967, Kita-Kyûshû-no-Kontyû,
XIV(1) : 15.

Specimens examined : Is. Amami-ohshima, Hatsuno, an example, April 3, 1970,
I. Matoba leg. ; Is. Ishigaki-jima, Mt. Banna-dake, an example, July 30, 1970,
I. Matoba leg.

Distribution : Japan (South-west of Honshû, Shikoku, Kyûshû, Is. Tsushima, Iss.
Amakusa, Is. Naka-no-shima, Is. Amami-ohshima, Is. Toku-no-shima, Is. Okinawa-
hontô, Is. Ishigaki-jima & Is. Iriomote-jima) & Formosa ?

Subfamily Conoderinae

8. *Aeoloderma brachmana* (Candèze, 1859) "Hamabe-madara-chibi-kometsuki"

Aeolus brachmana Candèze, 1859, Mon. II : 283, 345 (Hindustan & Ceylon).

Aeolus pardus Candèze, 1859, Mon. II : 345, Pl. 6, f. 34 (India).

Aeolus tessellatus Motschulsky, 1860, Bull. Nat. Moscow : 518.

Heteroderes multilineatus Candèze, 1878, Ann. Mus. Genova : 118 (Celebes).

Heteroderes brachmana : Candèze, 1888, Ann. Mus. Genova : 676 (Birma).

Heteroderes ancoralis Schwarz, 1901, Deutsche Ent. Zeit., XXIV.

Aeolus vittatus Matsumura, 1911, Mem. Soc. Ent. Belg., XVIII : 144 (Formosa).

Aeolus becarii : Fleutiaux, 1914, Philipp. Journ. Sc. : 441 (Philippines) (non Candèze,
1878).

Aeoloderma brachmana : Fleutiaux, 1929, Encycl. Ent. Col. : 34 (Annan & Tonkin).

Aeoloderma sinensis : Miwa, 1931, Trans. Nat. Hist. Soc. Formosa, XXI(116) : 259
(Okinawa) (non Candèze, 1859, from Hongkong).

Aeoloderma sinensis : Miwa, 1933, ibid., XXIII(124) : 9 (Iriomote) (non Candèze,
1859).

Aeoloderma brachmana : Ôhira, 1967, Ent. Rev. Japan, XIX(2) : 42-43 (Naka-
shima, Toku-no-shima, Amami-ohshima, Takara-jima, Oki-no-erabu-jima, Okinawa-
hontô, Ishigaki-jima & Iriomote-jima).

Specimens examined : Is. Ishigaki-jima, Mt. Banna-dake, an example, July 17, 1971
; an example, July 30, 1971, Y. Shibata leg. Is. Iriomote-jima, Hoshidate, 2 exa-

mples, July 18, 1971 ; 3 examples, July 19, 1971, Y. Shibata leg. Is. Yonaguni-jima, Kensa-bana, an example, July 15, 1970, O. Tamura leg.

Distribution : Japan (South-west of Honshû, Shikoku, Kyûshû, Is. Yaku-shima, Is. Kuchi-no-erabu-jima, Is. Naka-no-shima, Is. Takara-jima, Is. Amami-ohshima, Is. Kikai-ga-jima, Is. Toku-no-shima, Is. Oki-no-erabu-jima, Is. Okinawa-hontô, Is. Ishigaki-jima, Is. Iriomote-jima, Is. Minami-daitô-jima & Is. Yonaguni-jima), Formosa & South Asia.

9. *Prodrasterius hisamatsui yaeyamensis* *subsp. nov.* (pl. 2, fig. 7)

“*Yaeyama-chibi-kometsuki*”

This new subspecies from Is. Iriomote-jima may be established a distinction from the nominal subspecies : *Prodrasterius hisamatsui* Ôhira et Satô, 1964, Rep. Sci. Res. Tokara Is. & Amami Is., Ehime Univ., 1 : 28-29, f. D-F (Is. Amami-ohshima) (pl. 2, fig. 8), by the combination of following characteristics.

1. Body measurements 8.5~9.0×2.2 mm. in female.
2. Outline generally slender.
3. Paler in colour, wholly brownish.
4. Antennae shorter, failing to attain to tips of hind corners by each 2 apical joints or more, each 4th joint near equal in length to 2nd and 3rd combined together.
5. Prothorax comparatively narrow, a little expanded outwards medially.
6. Pronotal punctures fine, irregular in size, not so dense, not becoming larger and denser towards the lateral sides. (see pl. 2, figs. 7 & 8).
7. Interspaces among the pronotal punctures entirely smooth laterally.

Described from a female holotype and a female isotype, Hoshidate, Is. Iriomote-jima, July 20, 1971, Y. Shibata leg. ; a female paratype, Is. Yaeyama (labeled loc.), July 24 to Aug. 12, 1964, S. Kondô leg.

Subfamily Oxynopterinae

10. *Campsosternus nobuoi* Ôhira, 1966 “*Nobuo-ruri-kometsuki*”

Campsosternus nobuoi Ôhira, 1966, Bull. Japan Ent. Acad., II (2) : 8-9, f. B, E (Is. Yonaguni).

Specimens examined : Is. Yonaguni-jima, Urabe, 3 examples, July 16, 1971, Y. Shibata leg. ; 19 examples, Aug. 11, 1971, K. Matsumoto leg.

Distribution : Japan (Is. Yonaguni-jima).

11. *Campsosternus matsumurae* Miwa, 1929 “*Yotsumon-ôao-kometsuki*”

Campsosternus matsumurae : Miwa, 1929, Trans. Nat. Hist. Soc. Formosa, XIX(103) : 344 (nom. nov.).

Campsosternus 4-maculatus : Miwa, 1927, Ins. Mats., II (1) : 14, Pl. I, f. 4 (Is. Ishigaki) (non Fleutiaux, 1926).

Campsosternus matsumurae : Ôhira, 1969, Bull. Japan Ent. Acad., IV(6) : 29 (Iriomote).

Specimen examined : Is. Ishigaki-jima, Mt. Banna-dake, an example, Aug. 3, 1971, M. Kubota leg., captured by sweeping.

Distribution : Japan (Is. Ishigaki-jima & Is. Iriomote-jima).

Subfamily Dicrepidiinae

12. *Sephilus formosanus* Schwarz, 1902 "Hira-ashi-kometsuki"
Sephilus formosanus Schwarz, 1902, Deutsche Ent. Zeitschr. : 319 (Formosa).
Sephilus formosanus : Miwa, 1933, Trans. Nat. Hist. Soc. Formosa, XXIII (124) : 9
(Iriomote).
Sephilus formosanus : Ôhira, 1967, Bull. Japan Ent. Acad., III(5) : 27 (Ishigaki &
Iriomote).
Specimens examined : Is. Ishigaki-jima, Mt. Banna-dake, a male, Aug. 1, 1971,
Y. Shibata leg. ; Mt. Omoto-dake, a male, Aug. 2, 1971, O. Tamura leg.
Distribution : Japan (Is. Ishigaki-jima & Is. Iriomote-jima) & Formosa.

Subfamily Physorhininae

13. *Anchastus aquilus ryukyuensis* Ôhira, 1968 "Ryûkyû-ashibuto-kometsuki"
Anchastus aquilus ryukyuensis Ôhira, 1968, Kontyû, XXXVI(2) : 134-135 (Ama-
mi-ohshima, Okinawa-hontô, Ishigaki & Iriomote).
Specimen examined : Is. Okinawa-hontô. Nago, an example. July 6, 1971, O. Tamu-
ra leg.
Distribution : Japan (Is. Amami-ohshima, Is. Oki-no-erabu-jima, Is. Okinawa-hontô,
Is. Ishigaki-jima & Is. Iriomote-jima).

Subfamily Ampedinae

14. *Procaerus (Agaripenthes) hoshidatensis* Ôhira, 1968
"Hoshidate-hosoki-kometsuki"
Procaerus hoshidatensis Ôhira, 1968, Kontyû, XXXVI(2) : 136-137, f. 7, 8 (Iri-
omote).
Specimens examined : Is. Iriomote-jima, Hoshidate, 2 examples, July 19, 1971,
Y. Shibata leg.
Distribution : Japan (Is. Iriomote-jima).
15. *Hayekpenthes parallelaris* (Miwa, 1927) "Fuchiguro-hosoki-kometsuki"
Megapenthes parallelaris Miwa, 1927, Ins. Mats., II(1) : 21, Pl. f. 18 (Formosa).
Ganozanthus parallelaris : Ôhira, 1966, Kontyû, XXXIV(3) : 266 (Formosa).
Ganozanthus parallelaris : Ôhira, 1970, Bull. Aichi Univ. Educ., XIX (Nat. Sci) :
105-106 (Iriomote).
Hayekpenthes parallelaris : Ôhira, 1970, Ent. Rev., Japan, XXII(2) : 87.
Specimen examined : Is. Ishigaki-jima, Mt. Banna-dake, a male, July 28, 1971,
Y. Shibata leg.
Distribution : Japan (Is. Ishigaki-jima & Is. Iriomote-jima) & Formosa.
It is a new member to the Elaterid-fauna of Is. Ishigaki-jima.
16. *Xanthopenthes konoi* Nakane et Kishii, 1955 "Ôsamehada-kometsuki"
Xanthopenthes konoi Nakane et Kishii, 1955, Bull. Osaka Mun. Mus. Nat. Hist., 2 :
6-7, Pl. I, f. 2, 3 (Takara-jima).

Xanthopenthes konoï : Ôhira, 1970, Ent. Rev. Japan, XXII (2) : 75-88, 80 figs. (Is. Amami-ohshima & Is. Takara-jima).

Specimen examined : Is. Amami-ohshima, Hatsuno, a male, March 30, 1970, I. Matoba leg.

Distribution : Japan (Is. Takara-jima, Is. Amami-ohshima & Is. Toku-no-shima).

Lately, I had an opportunity to gain and research a specimen of this species from Is. Toku-no-shima as showing bellow, and its distributing record has not been hitherto given out entirely. Is. Toku-no-shima, a male, Aug. 5, 1966, H. Kojima leg.

17. *Abelater pulcherus* (Miwa, 1933) "Kibane-mame-tsuyakeshi-kometsuki"

Melanoxanthus pulcherus Miwa, 1933, Trans. Nat. Hist. Soc. Formosa, XXIII (124) : 8, f. (Iriomote).

Melanoxanthus pulcherus : Ôhira, 1968, Kontyû, XXXVI (2) : 137 (Ishigaki).

Abelater pulcherus : Ôhira, 1970, Ent. Rev. Japan, XXII (2) : 83.

Specimen examined : Is. Ishigaki-jima, Mt. Banna-dake, a female, July 30, 1971, Y. Shibata leg.

Distribution : Japan (Is. Ishigaki-jima & Is. Iriomote-jima).

18. *Ampedus* (s. str.) *aritai aritai* Ôhira et Satô, 1964

"Arita-muneaka-kometsuki"

Ampedus aritai Ôhira et Satô, 1964, Rep. Sci. Res. Tokara Is. & Amami Is., Ehime Univ., 1 : 27-28, f. A-C (Amami-ohshima).

Specimen examined : Is. Amami-ohshima, Nishi-nakama, a female, April 2, 1970, I. Matoba leg.

Distribution : Japan (Is. Amami-ohshima).

19. *Ampedus* (s. str.) *iriomotecola* sp. nov. (pl. 1 & pl. 2, fig. 1) "Iriomote-kometsuki"

Female, 4.8×1.4 mm., robust, subcylindrical or gently convex above slightly in longitudinal profile as well as beneath, parallel-sided, conspicuously shining. Wholly black ; antennae, basal part of prosternal process longitudinally, legs clearly yellowish brown ; mouth parts at each terminal, anterior rim of prosternum narrowly, fore angle of each propleuron, hind angles of pronotum, basal plates of meso-, and metacoxae brownish ; antennal sulci on epistome dusky reddish. Pubescence rather dense, recumbent, long, golden-yellowish on whole surface.

Head broad and large, weakly convex above ; punctation large, simple, densely impressed distinctly, rather irregular in size, interspaces among punctures feebly creased ; frontal margine well-defined roundly prominent ahead. Eyes moderate, not so projected outwards, lateral sides adjoining to eyes clearly emarginate inwards. Epistome conspicuously developed, broad, not so concave above, perfectly facing downwards ; antennal sulci wide, rather flattened ; punctures more or less rugosely impressed, large in size. Clypeus semicircular, convex above slightly ; punctures large, simple, dense, irregular in size and shape. Antennae short, failing to attain to tips of rear corners of prothorax by each 2 apical segments or more ; each basal joint robust, widest at near basal one-third ; 2nd subcylindrical, longer than breadth, clavate ; 3rd smallest, weakly shorter and narrower than 2nd, subconical ; 4th to

10th ill-serrated ; 4th triangular, a little shorter than preceding two segments combined together in length ; 5th subequal to 4th in form, slightly shorter than 4th ; 11th elongately subovale, distinctly longer than 10th.

Pronotum large, longer than width in median measurements, convex above moderately ; sides parallel from each base of hind angles to anterior two-fifths, thence gently converging roundly ahead ; rear corners extending backwards moderately and straightly, each terminal rather pointed ; having a visible carination along each lateral margin, straightly ; posterior edge feebly sulcate at base of each hind corner, very inconspicuous ; disc simple, having a vestige of medio-longitudinal depression on hind surface ; punctures dense but clearly sparser than on head, simple, regular in size, interspaces among its smooth entirely.

Scutellum broad, subcircular, well convex above semispherically ; surface rugosely shagreened wholly.

Elytra at humeri about as wide as distance across rear corners of prothorax, less than 2.2 times longer than breadth ; lateral sides near parallel from humeri to before the middle, thence gently converging roundly to each apex, which is simple, not truncate nor emarginate ; punctate-striae well-defined, strongly impressed by longitudinal and deep punctures ; intervals among striations a little convex above longitudinally, having small, traverse and irregular creases.

Prosternum medio-longitudinally elevated beneath behind anterior lobe to base of mucro ; frontal rim weakly bent antero-downwards ; sutures straight, double, conspicuously grooved at anterior two-fifths length shallowly, widened outwards feebly each other ; process narrow, moderately bent inwards behind each procoxal cavity, thence straightly extending backwards ; discal punctures very sparse, denser and rugoser laterally. Propleura flattened, triangular, punctures similar to those on pronotal disc medially, gently denser and smaller towards each outer border. Mesosternal cavity moderate, rather horizontal. Metasternal punctures resembling to propleural ones or a little larger in size. Hind coxal plates well-developed, distinctly enlarging backwards at inner half ; outer ends more or less truncate. Abdominal segments ordinary, punctures obviously minute, shallow, dense, in other point of view rather shagreened wholly.

Legs stout, not so long ; tarsi and claws simple.

Male unknown.

Described from a female holotype, Hoshidate in Is. Iriomote-jima, July 19, 1971, Y. Shibata leg.

In the general outline, this new *Ampedus*-species is closely allied to some small and blackish *Ampedus*, viz. *Elater pauxillus* Lewis, 1894, from Nikkô, *Ampedus honguanus* Ôhira, 1962, from Mt. Hongû, *Ampedus brunneisuturalis* Kishii, 1966, from Kamikôchi etc. But from these species may be easily separated in the following dissimilar structures : small body measurements, broad and large head, very dense and rugose punctures on head, distinctly dense and conspicuous punctures on pronotal disc, subcircular and well convex scutellum, stout legs etc. (see pl. 1, figs. 1~6).

Subfamily Elaterinae

20. *Chiagosnius delauneyi fuscomarginatus* (Lewis, 1896)

“*Kuroheri-tsuya-kometsuki*”

Aphanobius fuscomarginatus Lewis, 1896, Ann. Mag. Nat. Hist., XVII(6) : 337 (Amami-ohshima).

Megapenthes vitticollis Miwa, 1927, Ins. Mats., II(1) : 18, Pl. I, f. 12 (Loo-Choo & Corea).

Agonischius obscuripes Gyllenhal, 1817, var. *fuscomarginatus* : Miwa, 1934, Fauna Elat. Japan : 235 & 262 (Amami-ohshima & Okinawa-hontô).

Chiagosnius obscuripes Gyllenhal, 1817, f. *fuscomarginatus* : Chûjô, 1959, Mem. Fac. Lib. Arts & Educ. Kagawa Univ., II(69) : 5 (Amami-ohshima).

Chiagosnius delauneyi fuscomarginatus : Ôhira, 1968, Bull. Aichi Univ. Educ., XVII (Nat. Sci.) : 124, f. 20, 21 (Amami-ohshima).

Specimen examined : Is. Amami-ohshima, Hatsuno, a male, June 27, 1970, I. Matoba leg.

Distribution : Japan (Is. Amami-ohshima, Is. Okinawa-hontô, Is. Ishigaki-jima & Is. Iriomote-jima) & Formosa. 1873

21. *Elater* (*s. str.*) *sieboldi* (Candèze, 1758)

“*Oh-naga-kometsuki*”

Ludius Sieboldi Candèze, 1873, Mém. Soc. Sc. Liège, V(2) : 27 (Japan).

Aphanobius unicolor Fleutiaux, 1900, Bull. Mus. Hist. Nat. Paris, VI : 357 (Japan).

Elater sieboldi : Ôhira, 1954, New Ent., III(2-3) : 9.

Elater (*s. str.*) *sieboldi* : Ôhira, 1967, Bull. Japan Ent. Acad., III(5) : 30 (Amami-ohshima, Toku-no-shima, Okinawa-hontô, Ishigaki-jima & Iriomote-jima).

Specimens examined : Is. Ishigaki-jima, Mt. Banna-dake, 2 examples, July 17, 1971 ; an example, July 18, 1971 ; 2 examples, July 28, 1971 ; 2 examples, July 30, 1971 ; a male & 2 females, July 31, 1971 ; an example, Aug. 3, 1971, Y. Shibata leg., captured by lamp-light.

Distribution : Japan (Hokkaidô, Honshû, Is. Tobi-shima, Is. Sado-ga-shima, Is. Kam-muri-jima, Shikoku, Is. Oki-no-shima in Kôchi, Kyûshû, Is. Tsushima, Is. Yakushima, Is. Amami-ohshima, Is. Toku-no-shima, Is. Okinawa-hontô, Is. Ishigaki-jima & Is. Iriomote-jima) & Formosa.

22. *Vuilletus amamiensis amamiensis* Ôhira, 1967

“*Amami-midori-kometsuki*”

Vuilletus amamiensis Ôhira, 1967, Bull. Japan Ent. Acad., III(5) : 28-29, f. 13, 14 (Amami-ohshima).

Specimen examined : Is. Amami-ohshima, Hatsuno, a female. April 6, 1970, I. Matoba leg.

Distribution : Japan (Is. Amami-ohshima).

Subfamily Melanotinae

23. *Melanotus* (*Spheniscosomus*) *omotoensis* Ôhira, 1966

“*Omoto-kuro-kushi-kometsuki*”

Melanotus (*Spheniscosomus*) *omotoensis* Ôhira, 1966, Bull. Japan Ent. Acad., II(2)

: 9-10, f. C, G (Ishigaki-jima).

Specimens examined : Is. Ishigaki-jima, Mt. Banna-dake, a female, July 12, 1970, I. Matoba leg. : 2 examples, Aug. 3, 1971, M. Kubota & K. Matsumoto leg., captured by lamp-light.

Distribution : Japan (Is. Ishigaki-jima & Is. Iriomote-jima).

24. *Melanotus* (*s. str.*) *lochooensis lochooensis* Miwa, 1929

“*Ryūkyū-kushi-kometsuki*”

Melanotus lochooensis Miwa, 1929, Trans. Nat. Hist. Soc. Formosa, XIX (103) : 347 (Okinawa-hontō).

Melanotus legatus : Miwa, 1927, Ins. Mats., II (2) : 112 (Loo-Choo) (non Candèze, 1860).

Melanotus (*s. str.*) *lochooensis* : Ôhira, 1967, Bull. Japan Ent. Acad., III (5) : 35, f. 7, 8 (Amami-ohshima, Okinawa-hontō, Ishigaki-jima & Iriomote-jima).

Specimen examined : Is. Yonaguni-jima, Urabe, an example, Aug. 11, 1971, K. Matsumoto leg.

Distribution : Japan (Is. Amami-ohshima, Is. Okinawa-hontō, Is. Miyako-jima, Is. Ishigaki-jima, Is. Iriomote-jima & Is. Yonaguni-jima).

Recently, I had fortunately an occasion to get and examine many samples of this *Melanotus*-species from Is. Oki-no-erabu-jima as follows, and the information of the distribution, up to date, has been unknown entirely. Is. Oki-no-erabu-jima, 11 examples, April 17, 1957 ; 5 examples, May 31, 1957, M. Umabayashi leg.

Up to date, the reporting of this species from Is. Yonaguni-jima has not been given out quite.

25. *Melanotus* (*s. str.*) *legatus* Candèze, 1860 “*Kushi-kometsuki*”

Melanotus legatus Candèze, 1860, Mon. III : 323 (Japan).

Melanotus laticollis Motschulsky, 1860, Etud. Ent., IX : 8-9 (Japan).

Melanotus annosus : Okamoto, 1924, Bull. Agr. Ex. St., I (2) : 182 (Is. Saishû-tō) (non Candèze, 1865).

Melanotus (*s. str.*) *legatus* : Ôhira, 1967, Bull. Japan Ent. Acad., III (5) : 34, f. 11, 12 (Is. Naka-no-shima, Is. Akuseki-jima, Is. Takara-jima, Is. Amami-ohshima, Is. Toku-no-shima, Is. Oki-no-erabu-jima, Is. Okinawa-hontō, Is. Ishigaki-jima & Is. Iriomote-jima).

Specimen examined : Is. Ishigaki-jima, Mt. Banna-dake, an example, July 31, 1971, Y. Shibata leg.

Distribution : Kuriles, Japan (Hokkaidō, Honshū, Is. Tobi-shima, Is. Awa-shima, Is. Sado-ga-shima, Is. Hegura-jima, Is. Kammuri-jima, Shikoku, Is. Oki-no-shima in Kōchi, Kyūshū, Is. Iki, Is. Tsushima, Is. Kuchi-no-erabu-jima, Is. Naka-no-shima, Is. Akuseki-jima, Is. Takara-jima, Is. Amami-ohshima, Is. Toku-no-shima, Is. Oki-no-erabu-jima, Is. Okinawa-hontō, Is. Ishigaki-jima & Is. Iriomote-jima), Corea, Formosa? & China.

Subfamily Adrastinae

26. *Glyphonyx iriomotensis* Miwa, 1934 "Iriomote-nise-kuchibuto-kometsuki"
Glyphonyx iriomotensis Miwa, 1934, Fauna Elat. Japan : 263-264 (Is. Iriomote-jima).
Glyphonyx iriomotensis : Ôhira, 1968, Bull. Aichi Univ. Educ., XVII (Nat. Sci.) : 129 (Is. Ishigaki-jima & Is. Iriomote-jima).
Specimens examined : Is. Ishigaki-jima, Mt. Banna-dake, an example, July 30, 1970, I. Matoba leg. ; an example, July 30, 1971, Y. Shibata leg. ; Mt. Omoto-dake, an example, July 31, 1971, Y. Shibata leg., captured by lamp-light.
Distribution : Japan (Is. Ishigaki-jima & Is. Iriomote-jima).
27. *Glyphonyx rubricollis okinawana* Chûjô, 1959 "Okinawa-muneaka-kuchiboso-kometsuki"
Glyphonyx rubricollis okinawana Chûjô, 1959, Mem. Fac. Lib., Arts & Educ., Kagawa Univ., II(69) : 5 (Is. Okinawa-hontô).
Glyphonyx rubricollis okinawana : Ôhira, 1968, Bull. Aichi Univ. Educ., XVII (Nat. Sci.) : 130 (Is. Amami-ohshima & Is. Okinawa-hontô).
Specimen examined : Is. Amami-ohshima, Hatsuno, an example, March 28, 1970, I. Matoba leg.
Distribution : Japan (Is. Amami-ohshima & Is. Okinawa-hontô).
28. *Silesis shirozui* Kishii, 1959 "Shirozu-kuchibuto-kometsuki"
Silesis shirozui Kishii, 1959, AKITU, VIII(3) : 62-63, Pl. I. f. 3, Pl. II, 3 figs. (Is. Amami-ohshima).
Specimen examined : Is. Amami-ohshima, Hatsuno, June 28, 1970, I. Matoba leg.
Distribution : Japan (Is. Amami-ohshima).

Bibliography

- Candèze, B., 1859 : Mon. II : 283 & 345.
....., 1860 : Mon. III : 2-3.
....., 1873 : Mém. Soc. Sc. Liège, V(2) : 6 & 27.
....., 1874 : Rév. Mon. : 121 & 141.
Chûjô, M., 1959 : Mem. Fac. Lib., Arts & Educ. Kagawa Univ., II(69) : 5.
Kishii, T., 1959 : AKITU, VIII(3) : 57-66, 31 figs.
....., 1959 : Bull. Heian H. S., 3 : 1-24, 60 figs.
....., 1966 : Bull. Heian H. S., 10 : 1-11, 9 figs.
Lewis, G., 1894 : Ann. Mag. Nat. Hist., XIII(6) : 29.
....., 1896 : Ann. Mag. Nat. Hist., XVII(6) : 337.
Miwa, Y., 1927 : Ins. Mats., II(1) : 1 & 14.
....., 1929 : Trans. Nat. Hist. Soc. Formosa, XIX (103) : 344 & 347.
....., 1933 : Trans. Nat. Hist. Soc. Formosa, XXIII (124) : 8.
....., 1934 : Fauna Elat. Japan : 1-289, 8 pls.
Motschulsky, V., 1860 : Etud. Ent., IX : 8-9.
....., 1866 : Bull. Soc. Nat. Mosc., XXXIX : 163-200.

- Nakane, T. et Kishii, T., 1955 : Bull. Osaka Mun. Mus. Nat. Hist., 2 : 1-8, 28 figs.
 , 1956 : Sci. Rep. Saikyô Univ. (Nat. Sci. & Liv. Sci.), II(3) : 27-28.
 , 1958 : Sci. Rep. Saikyô Univ. (Nat. Sci. & Liv. Sci.), II(5) : 34-42,
 49 figs.
- Ôhira, H., 1962 : Kontyû, XXX(4) : 262-264, 6 figs. ; 1968 : ibid., XXXVI(2) :
 134-143, 19 figs.
 , 1966 : Bull. Japan Ent. Acad., II(2) : 7-12, 7 figs. ; 1967 : ibid., III(5) :
 27-38, 19 figs. ; 1969 : ibid., IV(6) : 27-32, 2 figs.
 , 1967 : Trans. Shikoku Ent. Soc., IX(3) : 95-106, 22 figs.
 , 1967 : Ent. Rev. Japan, XIX(2) : 41-48, 22 figs. ; 1971 : ibid., XXIII(1)
 : 34-38, 3 figs.
 , 1968 : Bull. Aichi Univ. Educ. XVII (Nat. Sci.) : 123-134, 30 figs. ; 1969 :
 ibid., XVIII : 89-103, 26 figs. ; 1970 : XIX : 103-111, 17 figs.
 , 1971 : New Ent., XX(2-3) : 1-6, 9 figs.
 , 1971 : Pacific Ins., XIII(3-4) : 531-543, 23 figs.
- Ôhira, H. et Satô, M., 1964 : Rep. Sci. Res. Tokara & Amami Iss. Ehime Univ., 1 :
 27-29, 6 figs.
- Okamoto, H., 1924 : Bull. Agr. Ex. Govern-Gen. Chôsen, I(2) : 182.
- Schwarz, O., 1902 ; Deutsche Ent. Zeitschr. : 319.

Résumé

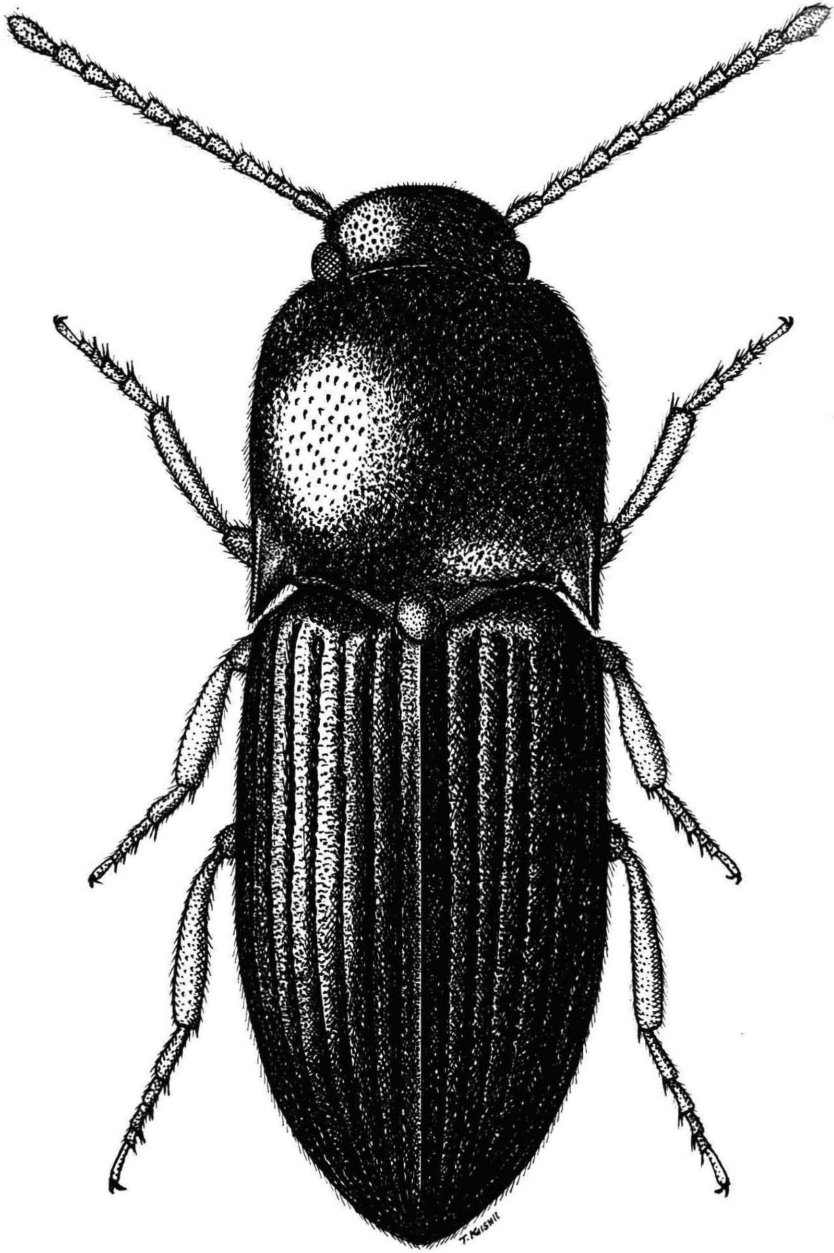
本研究シリーズは1959年とその第一報を“屋久島の叩頭虫類”として平安学園研究論集第三号にのせ、1964年に第四報“栗島・舩倉島・セツ島の叩頭虫類”を同論集第八号に発表した。その後、他に研究が集中したために、本シリーズの継続が伸びのびになっていたが、今回幸いにも本校生物クラブOBで現在近畿大学農学部在籍中の北村順三君を通じ、同農学部生有志で組織する“近畿大学農学部内生物研究会”により1970・1971両年にわたり行なわれ、第一・第二次南西諸島調査隊の調査採集行の結果もたらされた、貴重な叩頭虫類の資料の同定依頼を受け、本研究として発表する機会を得たわけである。ここに同調査隊諸氏及び北村君に深く謝意を表するものである。

さて、沖縄列島の叩頭虫類に関しては、すでに先学諸氏の研究があり、特に最近小生の敬愛する大平仁夫博士により势力的なる論著が多く公表を見ているので、それにつけ加える多くのものはないのであるが、今回の資料中には明らかに新種及び新亜種と見做されるものが各一種あり、記録的にも貴重なものがあるので、敢てこの小著を世に問うものである。結局、八重山群島を主として、沖縄本島、奄美大島から得られた、今回の資料は11亜種28種、約80頭のもので、中に西表島から1新種 *Ampedus* (*s. str.*) *iriomotecola* と矢張り西表島から1新亜種 *Prodrasterius hisamatsui yaeyamensis* の記載とともに、さらに、新分布記録として2種の報告を含む。

又、本報文には著者の所蔵する標本中、地域的に関連ある新分布域を示すものの記録も含めた。

終りに臨み、本研究発表の機会を与えられ、且つ筆者の多くの注文を種々聞いていただいた、平安学園教育論集刊行会関係者各位に深く謝意を表したい。更に筆者の研究に当り、文献、資料等の面で多大なる援助と御教示を与えられた諸氏に深くお礼の言葉を述べるものである。

Plate 1



Ampedus (s. str.) iriomotecola sp. nov. ♀, 4.6×1.5 mm.

Explanation of Plate 2

- Fig. 1. *Ampedus (s. str.) iriomotecola sp. nov.*, holotype, female, punctures of pronotal disc.
- Fig. 2. *A. (s. str.) paucillus* (LEWIS, 1894), female, from Shimashima valley, ditto.
- Fig. 3. *A. (s. str.) brunneisuturalis* KISHII, 1966, holotype, female, from Kamikôchi, ditto.
- Fig. 4. *A. (s. str.) honguanus* ÔHIRA, 1962, male, from Nachi, ditto.
- Fig. 5. *A. (s. str.) yukoanus* KISHII, 1962, holotype, male, from Mt. Rishi-ri-dake, ditto.
- Fig. 6. *A. (s. str.) kasugensis* KISHII, 1966, holotype, male, from Kasugayama, ditto.
- Fig. 7. *Prodrasterius hisamatsui yaeyamensis subsp. nov.*, holotype, female, punctures on lateral side of pronotum.
- Fig. 8. *P. h. hisamatsui* ÔHIRA et SATÔ, 1964, male, from Is. Toku-no-shima, ditto.

Plate 2

