

List of Insect-Fauna Collected from Japanese
Appendant Islands by the Biological Laboratory
of the Heian High School (I)

By
Biological Laboratory, Heian High School

Reprinted from
THE BULLETIN OF THE HEIAN HIGH SCHOOL
KYOTO, JAPAN

No. 20 : 57~91, October, 1976

List of Insect-Fauna Collected from Japanese Appendant Islands by the Biological Laboratory of the Heian High School (I)

By

Biological Laboratory, Heian High School

(Shichijô-Ômiya, Shimokyô-ku, Kyôto, Japan)

Since 1951 to 1969, the members of the Biological Club of the Heian High School had collected extremely many materials of animals and plants from about 40 islands belonging to Japan, and their energish activities had carried out generally within the school summer vacation (late in July to middle in August) excepting of 3 times spring ones in 22 Biological Expeditions organized under the guidance by the staffs of the Biological Laboratory.

As the result, very many species and specimens of insects had gathered in this Laboratory, and up to this time on a part of these materials reported or published as showing below.

- 1951 : Tamu, N. & Tsukamoto, K. — On the Lepidoptera from Kammuri-Island (Kyoto, Japan) (part I) (Tyô to Ga, Trans. Lep. Soc. Japan, VII, 4 : 28 & 29) (in Japanese).
- 1952 : Ditto — A New Species of Genus *Merionoeda* from Japan (Col. Cer.) (Entom. Rev. Japan, VI : 9, 1 fig.).
- 1952 : Iwata, Y. — Hegura-jima no Chô-ruï (Kontyû no Kagaku, I : 2) (in Japanese).
- 1952 : Tsukamoto, K. — Kammuri-jima Saishû-ki (ibid. : 14 & 15) (in Japanese).
- 1955 : Tamu, N. & Tsukamoto, K. — On the Male of *Merionoeda septentrionalis* Tamu et Tsukamoto (Col. Cer.) (AKITU, IV : 18, 1 fig.).
- 1955 : Ditto — On the Coleoptera in Kammuri Island (Kyoto, Japan) I (ibid., IV : 69~76, 5 figs.) (in Japanese).
- 1956 : Tamu, N. & Inoue, S. — On the Lepidoptera from Kammuri-island (Kyoto, Japan) (part II) (Tyô to Ga, VII) (in Japanese).
- 1956 : Kishii, T. — Some New Forms of Elateridae in Japan (II) (AKITU, IV : 17 & 18).
- 1956 : Tamu, N. & Tsukamoto, K. — On the Coleoptera in Kammuri Island (Kyôto, Japan) II, III & IV (ibid., V : 21, 22, 43~46, 69 & 64, 3 figs.) (in Japanese).
- 1956 : Ditto — Biogeographical and Ecological Studies of "Kammuri-sima" Island, Japan Sea (Bull. Heian High School, No. 1 : 1~113, 5 pls.) (in Japanese).
- 1957 : Hayashi, M. — Kammuri-jima-san no Ceresium-zoku Tenguû ni tsuite (AKITU, VI : 26) (in Japanese).

- 1957 : Tamu, N. & Tsukamoto, K. — On the Coleoptera in Kammuri Island (Kyôto, Japan) V (ibid., VI : 94~97) (in Japanese).
- 1958 : Tsukamoto, K. — Entomological Results from the Biological Expedition of Yakushima, Col. Lamel. (ibid., VII : 13 & 14, 3 figs.).
- 1959 : Tamu, N., Tsukamoto, K., Kishii, T. & Inoue, S. — Tsushima no Kontyû (Yohô) (ibid., VIII : i) (in Japanese).
- 1959 : Tsukamoto, K. — Rishiri-tô no Kogane-mushi (ibid., VIII : 24) (in Japanese).
- 1959 : Kishii, T. — Elateridae of Is. Yakushima (Bull. Heian High School, No. 3 : 1~24, 3 pls., 2 tabs.).
- 1959 : Tsukamoto, K. — Rebun-tô, Rishiri-tô, Todo-jima Seibutsu-shi (Kyôto-fu Shiritsu Chûgakkô Kôtôgakkô Rika Kenkyû-kai Kaihō, No. 3 : 1~7) (in Japanese).
- 1959 : Kishii, T. — Rishiri-tô, Rebun-tô, Todo-jima no Kometsuki-mushi ni tsuite (Yohô) (ibid., No. 3 : 9~15) (in Japanese).
- 1960 : Tamu, N., Inoue, S., Tsukamoto, K. & Kishii, T. — Biogeographical and Ecological Studies on the Islands of Japan and its Adjacent Area (II), Is. Kami-shima, Mié Pref. (Shima-no-kuni) and the Islets of Gulf Atsumi, Aichi Pref. (Mikawa-no-kuni) (Bull. Heian High School, No. 4 : 1~126) (in Japanese.).
- 1960 : Inoue, S. — Capture of *Nacaduba kurava* and *Hypolimnas misippus* in Shikoku (Tyô to Ga, XI) (in Japanese).
- 1960 : Kishii, T., Tsukamoto, K. & Inoue, S. — Kôchi-ken Sukumo-shi Oki-no-shima, Hime-shima, Uguri-jima, Kashiwa-jima no Kontyû-sô ni kan-suru Kenkyû (Yohô) (Dai 15-kai Nippon Seibutsu-Kyôiku-kai Zenkoku Taikai, Kenkyû-Happyô, Summary : 1~24) (in Japanese).
- 1961 : Kishii, T. — Elateridae of Is. Tsushima (Bull. Heian High School, No. 5 : 1~56, 11 pls.).
- 1962 : Ditto — Elateridae of Islands Rishiri-tô, Rebun-tô, and Todo-jima (ibid., No. 7 : 1~31, 4 pls.).
- 1964 : Ditto — Elateridae of Islands Awa-shima, Hegura-jima and Nanatsu-jima (ibid., No. 8 : 1~38, 3 pls.).
- 1966 : Ditto — Elateridae of Kyôto and its Adjacent Regions (Biol. Lab., Heian High School : 7).
- 1966 : Ditto — Some New Forms of Elateridae in Japan (IV) (Bull. Heian High School, No. 10 : 8 & 9, 1 fig.).
- 1968 : Ditto — Some New Forms of Elateridae in Japan (V) (ibid., No. 13 : 1~3, 1 fig.).
- 1970 : Ditto — On the Genus *Yukoana* and *Quasimus* from Japan (ibid., No. 15 : 22, 24 & 25, 8 figs.).
- 1973 : Tsukamoto, K. — On the Scarabaeoidae (Col.) II (ibid., No. 17 : 43, 12 figs.).

In this series, the authors wish to make as much as possible a complete list of insect-fauna in these islands stated above based upon the collection of the Biological

Laboratory of the Heian High School, and the expeditional data and the correct situation of these islands are as following map and table (Pls. I & II, Tab. I). And moreover, some samples collected in 1931 and 1933 from Is. Kammuri-jima by Mr. N. Tamu are also included in the present study.

Now, in this paper, the butterflies by K. Tsukamoto and the family Chrysomelidae by T. Kishii are drawn up a list severally with some notes.

Before going further, the authors wish to express their hearty thanks to all the members of the Biological Club of the Heian High School for their kindness specially in collecting the valuable materials and in many useful helps. More, they want to mention their cordial gratitude to the successive presidents, exassistant ones and the many staffs of the Heian High School for the courteous aids given during the course of the surveys and study, and also to acknowledge their indebtedness to many island peoples who were afforded kindly numerous facilities in each expedition.

**Tab. I. Date of the Expedition by the Biological Laboratory
of the Heian High School**

Hokkaidô District

Is. Todo-jima (海馬島) : August 12, 1958.

Is. Rebun-tô (礼文島) : August 11~13, 1958.

Is. Rishiri-tô (利尻島) : July 21~August 11, 1958.

Niigata Prefecture

Is. Awashima (粟島) : July 30~August 11, 1961.

Ishikawa Prefecture

Is. Hegura-jima (舳倉島) : April 11~15, 1952 ; August 2~11, 1952.

Is. Ôshima in Iss. Nanatsu-jima (大島, セツ島) : August 5, 1952.

Kyôto Prefecture

Is. Kammuri-jima (冠島) : July 25, 1931 ; June 10, 1933 ; August 15, 1933 ;
September 24, 1933 ; August 9, 1951 ; July 28~30, 1952 ; April 6, 1956 ;
July 6, 1956 ; April 13, 1958.

Shimane Prefecture

Is. Dôgo in Iss. Oki (道後, 穂岐) : August 5~7, 1955.

Tôkyô Metropole

Is. Hachijô-ga-shima (八丈島) : July 24~30, 1962.

Is. Hachijô-koshima (八丈小島) : August 1~4, 1962.

Mié Prefecture

Is. Kami-shima (神島) : August 6, 1953.

Aichi Prefecture

Is. Himaka-jima (日間賀島) : August 8, 1953.

Is. Ki-jima (木島) : August 11, 1953.

Is. Koiso-jima (小磯島) : August 11, 1953.

Is. Nakate-jima (中手島) : August 13, 1953.

Is. Saku-jima (佐久島) : August 13, 1953.

Is. Shino-shima (篠島) : August 10, 1953

Is. Tsukumi-jima (築見島) : August 11, 1953.

Kôchi Prefecture

Is. Kashiwa-jima (柏島) : July 24 & 30, 1960.

Is. Oki-no-shima (沖ノ島) : July 24~August 8, 1960.

Is. Uguri-jima (鵜来島) : August 2, 1960.

Is. Hime-shima (姫島) : August 3, 1960.

Nagasaki Prefecture

Is. Tsushima (対馬) : July 21~August 10, 1959.

Kagoshima Prefecture

Is. Kami-koshiki-jima (上甌島) : July 28~31, 1967.

Is. Naka-koshiki-jima (中甌島) : August 1~4, 1967.

Is. Shimo-koshiki-jima (下甌島) : August 4~14, 1967.

Is. Tane-ga-shima (種子島) : July 30, 1957.

Is. Yakushima (屋久島) : July 31~August 14, 1957.

Is. Kuchi-no-erabu-jima (口永良部島) : July 29~August 13, 1963.

Is. Amami-Ôshima (奄美大島) : July 26~August 9, 1964.

Is. Toku-no-shima (徳之島) : July 31, 1965.

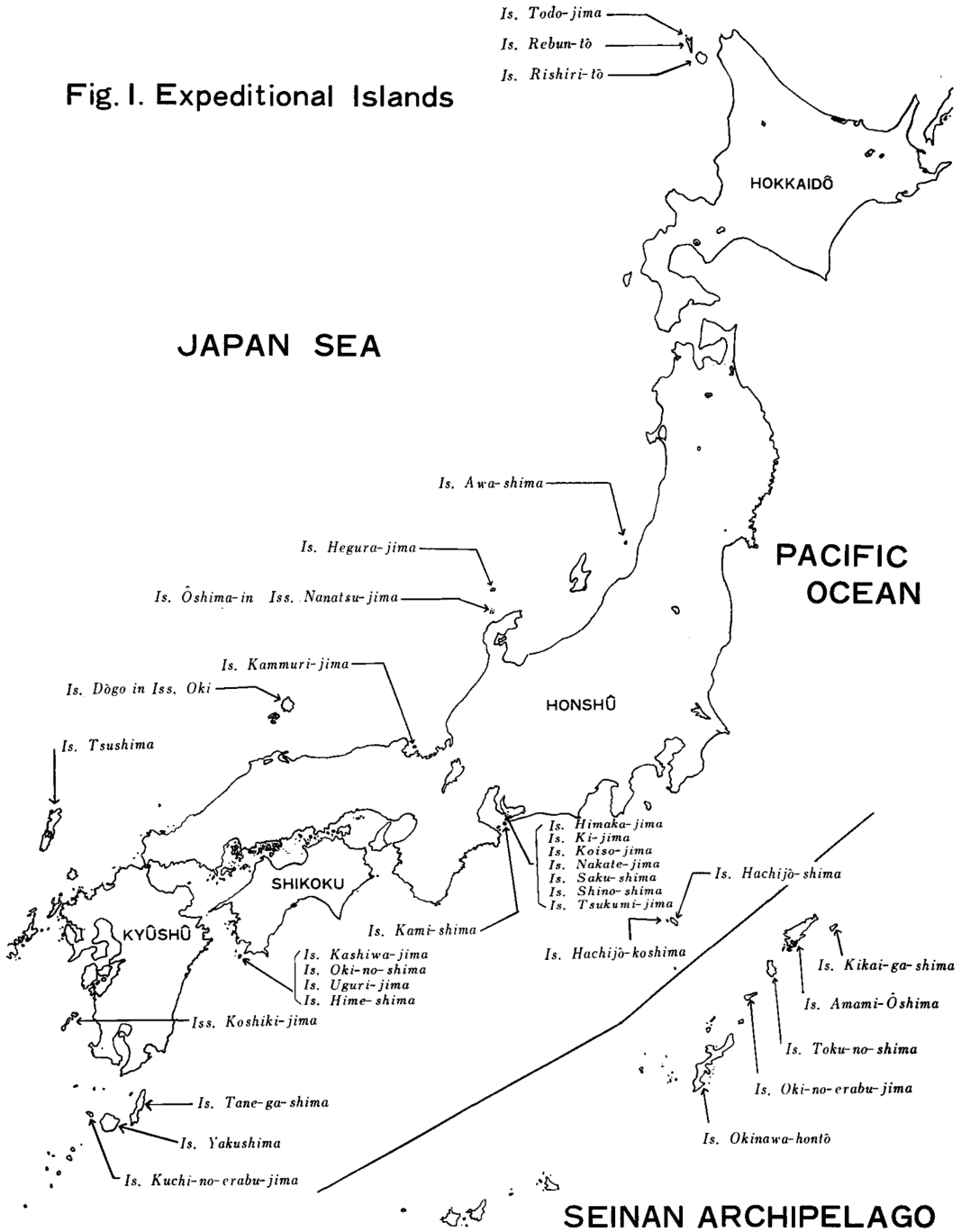
Is. Kikai-ga-shima (喜界ヶ島) : July 28~August 2, 1964.

Is. Oki-no-erabu-jima (沖永良部島) : August 10~15, 1966.

Okinawa Prefecture

Is. Okinawa-hontô (沖縄本島) : July 30~August 2, 1969.

Fig. I. Expeditional Islands



A List of the Butterflies from Japanese Appendant Islands

By

Keiichi Tsukamoto

(Biological Laboratory, Heian High school)

Is. Rishiri

Family I. HesperIIDae

1. *Ochlodes venata herculea* (Butler, 1881)
Oshidomari.
2. *Polytremis pellucida* (Murray, 1875)

Family II. Papilionidae

3. *Paranassius stubbendorffii hoenei* Schweitzer, 1912
Mt. Rishiri.
4. *Papilio machaon hippocrates* C. et R. Felder, 1864
Oshidomari.
5. *Papilio bianor dehaanii* C. et R. Felder, 1864
Oshidomari.
6. *Papilio maackii tutanus* Fenton, 1881
Oshidomari, Motodomari.

Family III. Pieridae

7. *Colias erate poliographus* Motschulsky, 1860
Oshidomari.
8. *Pieris rapae crucivora* Boisduval, 1836
Oshidomari.
9. *Pieris napi nesis* Fruhstorfer, 1909
Oshidomari.

Family IV. Lycaenidae

10. *Favonius orientalis* (Murray, 1875)
Mt. Rishiri.
11. *Strymonidia w-album fentoni* (Butler, 1881)
Oshidomari.
12. *Maculinea teleius ogumae* (Matsumura, 1910)
Oshidomari.
13. *Celastrina argiolus ladonides* (de l' Orza, 1869)
Oshidomari.
14. *Plebejus argus micrargus* (Butler, 1877)
Numaura.

Family V. Nymphalidae

15. *Argyronome laodice japonica* (Ménétrières, 1857)
Oshidomari, Oniwaki.

16. *Argyronome ruslana lysippe* (Janson, 1877)
Numaura.
17. *Argynnis paphia tsushimana* Frustorfer, 1906
Oshidomari, Oniwaki.
18. *Fabriciana adippe pallescens* (Butler, 1873)
Oshidomari.
19. *Speyeria aglaja basalis* (Matsumura, 1908)
Oshidomari.
20. *Neptis rivularis bergmani* Bryk, 1942
Oniwaki.
21. *Araschnia burejana strigosa* Butler, 1866
Oshidomari.
22. *Nymphalis xanthomelas japonica* (Stichel, 1902)
Oshidomari.
23. *Inachis io geisha* (Stichel, 1909)
Kutsugata.
24. *Aglais urticae connexa* (Butler, 1881)
Mt. Rishiri, Oshidomari, Oniwaki.
25. *Cynthia cardui* (Linnaeus, 1758)
Kutsugata. Oniwaki.
26. *Vanessa indica* (Herbst, 1794)
Oshidomari, Oniwaki.
27. *Apatura ilia substituta* Butler, 1873
Oshidomari.

Family VI. Satyridae

28. *Erebia nipponica scoparia* Butler, 1881
Mt. Rishiri.
29. *Erebia ligea rishirizana* Matsumura, 1928
Mt. Rishiri.
30. *Minois dryas bipunctatus* (Motschulsky, 1806)
Mt. Rishiri, Oshidomari.
31. *Harima callipteris* (Butler, 1877)
Oshidomari, Oniwaki.
32. *Lethe diana diana* (Butler, 1866)
Mt. Rishiri, Oshidomari, Oniwaki.
33. *Neope nipponica nipponica* Butler, 1881
Oshidomari, Oniwaki, Numaura.

Is. Awashima

Family I. HesperIIDae

1. *Daimio tethys tethys* (Ménétrières, 1857)
2. *Parnara guttata* (Bremer et Crey, 1853)

Family II. Papilionidae

3. *Papilio machaon hippocrates* C. et R. Felder, 1864
4. *Papilio xuthus* Linnaeus, 1767
5. *Papilio macilentus* Janson, 1877
6. *Papilio protenor demetrius* Cramer, 1782
7. *Papilio bianor dehaanii* C. et R. Felder, 1864

Family III. Pieridae

8. *Eurema hecabe mandarina* (de l'Orza, 1869)
9. *Colias erate poliographus* Motschulsky, 1860
10. *Pieris rapae crucivora* Boisduval, 1836
11. *Pieris melete* Ménétriès, 1857
12. *Pieris napi japonice* Shirôzu, 1952

Family IV. Lycaenidae

13. *Lycaena phlaeas daimio* (Seitz, 1909)
14. *Taraka hamada* (Druce, 1875)
15. *Pseudozizeeria maha argia* (Ménétriès, 1857)
16. *Celastrina argiolus ladonides* (de l'Orzu, 1869)

Family V. Nymphalidae

17. *Argyronome laodice japonica* (Ménétriès, 1857)
18. *Argyronome ruslana lysippe* (Jansoni, 1877)
19. *Argynnis paphia tsushimana* Fruhstorfer, 1906)
20. *Nephargynnis anadyomene midas* (Butler, 1866)
21. *Fabriciana adippe pallescens* (Butler, 1873)
22. *Neptis sappho intermedia* W. B. Pryer, 1877
23. *Polygonia c-aureum* (Linnaeus, 1758)
24. *Vanessa indica* (Herbst, 1794)

Family VI. Satyridae

25. *Minois dryas bipunctatus* (Motschulsky, 1860)
26. *Lethe diana diana* (Butler, 1866)
27. *Mycalesis gotama fulginia* Fruhstorfer, 1911

Is. Kamishima. (Atsumi Bay)

Family I. HesperIIDae

1. *Pelopidas mathias oberthueri* Evans, 1937
2. *Parnara guttate* (Bremer et Grey, 1853)

Family II. Papilionidae

3. *Papilio xuthus* Linnaeus, 1767
4. *Papilio helenus nicconicolens* Butler, 1881
5. *Papilio bianor dehaanii* C. et R. Felder, 1864

Family III. Pieridae

6. *Eurema hecabe mandarina* (de l' Orza, 1869)
7. *Colias erate poliographus* Motschulsky, 1860
8. *Pieris rapae crucivora* Boisduval, 1836

Family IV. Lycaenidae

9. *Lycaena phlaeas daimio* (Seitz, 1906)
10. *Pseudozizeeria maha argia* (Ménétrières, 1857)
Family V. Nymphalidae
11. *Cynthia cardui* (Linnaeus, 1758)
12. *Vanessa indica* (Herbst, 1794)

Is. Himakajima.

Family I. Papilionidae

1. *Graphium sarpedon nipponum* (Fruhstorfer, 1903)

Family II. Pieridae

2. *Eurema hecabe mandarina* (de l'Orza, 1869)
3. *Pieris rapae crucivora* Boisduval, 1836

Family III. Lycaenidae

4. *Lycaena phlaeas daimio* (Seitz, 1909)
5. *Pseudozizeeria maha argia* (Ménétrières, 1857)
6. *Everes argiades hellotia* (Ménétrières, 1857)

Family IV. Nymphalidae

7. *Cynthia cardui* (Linnaeus, 1758)

Kijima (Atsumi Bay)

Family I. Hesperidae

1. *Parnara guttata* (Bremer et Grey, 1853)

Family II. Papilionidae

2. *Graphium sarpedon nipponum* Fruhstorfer, 1903)
3. *Papilio xuthus* Linnaeus, 1767

Family III. Pieridae

4. *Eurema hecabe mandarina* (de l'Orza, 1869)
5. *Colias erate poliographus* Motschulsky, 1860
6. *Pieris rapae crucivora* Boisduval, 1836

Family IV. Lycaenidae

7. *Pseudozizeeria maha argia* (Ménétrières, 1857)

Is. Nakate-jima. (Atsumi Bay)

Family I. Pieridae

1. *Eurema hecabe mandarina* (de l'Orza, 1869)

Family II. Lycaenidae

2. *Pseudozizeeria maha argia* Ménétrières, 1857)

Is. Shino-jima. (Atsumi bay)

Family I. Papilionidae

1. *Graphium sarpedon nipponum* (Fruhstorfer, 1903)
2. *Papilio xuthus* Linnaeus, 1767
3. *Papilio protenor demetrius* Cramer, 1782

Family II. Pieridae

4. *Eurema hecabe mandarina* (de l'Orza, 1869)

5. *Pieris rapae crucivora* Boisduval, 1836
Family III. Lycaenidae
6. *Pseudozizeeria maha argia* (Ménétrières, 1857)
7. *Éveres argiades hellotia* (Ménétrières, 1857)
Family IV. Nymphalidae
8. *Vanessa indica* (Herbst, 1794)

Is. Tsukumi-jima.

Family I. Pieridae

1. *Eurema hecabe mandarina* (de l'Orza, 1869)

Is. Oki no shima, Is. Hime & Is. Uguri (Kôchi).

Family I. HesperIIDae

1. *Parnara guttata* (Bremer et Grey, 1853)
Oki no shima,

Family II. Papilionidae

2. *Byasa alcinous alcinous* (Klug, 1836)
Oki no shima, Hime shima.
3. *Graphium sarpedon nipponum* (Fruhstorfer, 1903)
Oki no shima.
4. *Papilio xuthus* Linnaeus, 1767
Oki no shima.
5. *Papilio memnon thunbergii* von Siebold, 1834
Oki no shima, Hime shima.
6. *Papilio helenus nicconicolens* Butler, 1881
Oki no shima.

Family III. Pieridae

7. *Eurema hecabe mandarina* (de l'Orza, 1869)
Oki no shima, Hime shima.
8. *Eurema laeta bethesba* (Janson, 1878)
Oki no shima.
9. *Pieris rapae crucivora* Boisduval, 1836
Oki no shima, Hime shima,

Family IV. Lycaenidae

10. *Narathura japonica* (Murray, 1875)
Uguri jima.
11. *Lycaena phlaeas daimio* (Seitz, 1906)
Oki no shima.
12. *Lampides boeticus* (Linnaeus, 1767)
Oki no shima, Hime shima, Kashiwa jima.
13. *Nacaduba kurava septentrionalis* Shirôzu, 1953
Oki no shima, Hime shima.

14. *Pseudozizeeria maha argia* (Ménétrières, 1857)
Oki no shima.
15. *Celastrina argiolus ladonides* (de l'Orga, 1869)
Oki no shima.
16. *Everes argiades hellotia* (Ménétrières, 1857)
Oki no shima.
17. *Curetis acuta paracuta* de Nicéville, 1901
Oki no shima.

Family V. Danaidae

18. *Parantica sita nipponica* (Moore, 1883)
Oki no shima.

Family VI. Nymphalidae

19. *Argyreus hyperbius* Linnaeus, 1763
Oki no shima.
20. *Neptis sappho intermedia* W. B. Pryer, 1877
Oki no shima.
21. *Kaniska canace no-japonicum* (von Siebold, 1824)
Oki no shima.
22. *Vanessa indica* (Herbst, 1794)
Oki no shima.
23. *Hypolimnas misippus* (Linnaeus, 1761)
1 Male, Uguri jima, 2, Aug. 1960.

Family VII. Satyridae

24. *Yptima argus* Butler, 1866
Oki no shima.
25. *Mycalesis gotama fulginia* Fruhstorfer, 1911
Oki no shima.

Is. Tsushima.

Family I. Hesperidae

1. *Choaspes benjaminii japonica* (Murray, 1875)
Mt. Ariake.
2. *Isoteinon lamprospilus* C. et R. Felder, 1862
Mt. Ariake.
3. *Potanthus flavum* (Murray, 1875)
Ariake.
4. *Pelopidas mathias oberthueri* Evans, 1937
Mt. Ariake.

Family II. Papilionidae

5. *Graphium sarpedon nipponum* (Fruhstorfer, 1903)
Mt. Ariake.
6. *Papilio machaon hippocrates* C. et R. Felder, 1864
Mt. Ariake.

7. *Papilio xuthus* Linnaeus, 1767
Mt. Ariake.
8. *Papilio protenor demetrius* Cramer, 1782
Mt. Ariake.
9. *Papilio helenus nicconicolens* Butler, 1881
Mt. Ariake.
10. *Papilio bianor dehanii* C. et R. Felder, 1864
Family III. Pieridae
11. *Eurema hecabe mandarina* (de l'Orza, 1869)
Sasuna.
12. *Anthocharis scolymus* Butler, 1886
13. *Pieris rapae crucivora* Boisduval, 1836
Sasuna.
14. *Pieris canidia canidia* (Linnaeus, 1768)
Sasuna.
Family IV. Lycaenidae
15. *Lycaena phlaeas daimio* (Seitz, 1909)
Mt. Ariake.
16. *Taraka hamada* (Druce, 1875)
Sasuna.
17. *Niphanda fusca* (Bremer, 1864)
Mt. Ariake.
18. *Pseudozizeeria maha argia* (Ménétrières, 1857)
Mt. Ariake.
19. *Celastrina argiolus ladonides* (de l'Orza, 1869)
Mt. Ariake.
20. *Pithecopis fulgens tsushmanus* Shirôzu et Urata, 1957
Sasuna.
21. *Everes argiades hellotia* (Ménétrières, 1857)
Mt. Ariake.
22. *Curetis acuta paracuta* de Nicéville, 1901
Family V. Danaidae
23. *Parantica sita nipponica* (Moore, 1883)
Mt. Ariake.
Family VI. Nymphalidae
24. *Argyronome laodice japonica* (Ménétrières, 1857)
Mt. Ariake.
25. *Argynnis paphia tsushimana* Fruhstorfer, 1906
Sasu pass.
26. *Nephargynnis anadyomene midas* (Butler, 1866)
Izuhara.
27. *Damora sagana liane* (Fruhstorfer, 1907)
Ariake.

28. *Argyreus hyperbius* (Linnaeus, 1763)
Mt. Ariake, Uchiyama.
29. *Neptis sappho intermedia* W. B. Pryer, 1877
Uchiyama, Sasu pass, Mt. Ariake, Sasuna.
30. *Polygonia c-aureum* (Linnaeus, 1758)
Uchiyama.
31. *Kaniska canace no-japonicum* (von Siebold, 1824)
Sasuna.
32. *Vanessa indica* (herbst, 1794)
Uchiyama.

Family VII. Satyridae

33. *Ypthima motschulskyi motschulskyi* Bremer et Grey, 1853
Sasu pass, Sasuna.
34. *Minois dryas bipunctatus* (Motschulsky, 1860)
Mt. Ariake.
35. *Lethe diana diana* (Butler, 1866)
Uchiyama.
36. *Mycalesis gotama fulginia* Fruhstorfer, 1911
Sasuna.

Is. Kami-Koshiki

Family I. Papilionidae

1. *Pachiopta arislochiae interpositus* (Fruhstorfer, 1903)
2. *Graphium sarpedon nipponum* (Fruhstorfer, 1903)
3. *Papilio xuthus* Linnaeus, 1767
4. *Papilio helenus nicconicolens* Butler, 1881

Family II. Pieridae

5. *Eurema hecabe mandarina* (de l'Orza, 1869)
6. *Colias erate poliographus* Motschulsky, 1860

Family III. Lycaenidae

7. *Narthura bazalus turbata* (butler, 1881)

Family IV. Danaidae

8. *Parantica sita niphonica* (Moore, 1883)

Family V. Nymphalidae

9. *Argyronome ladice japonica* (Ménétrières, 1857)
10. *Argyreus hyperbius* (Linnaeus, 1763)
11. *Neptis sappho intermedia* W. B. Pryer, 1877
12. *Perecis almana* (Linnaeus, 1758)
13. *Hypolimnas bolina* (Linnaeus, 1758)

Family VI. Satyridae

14. *Harima callipteris* (Butler, 1877)
15. *Neope niphonica niphonica* Butler, 1881

Is. Koshiki (Naka-koshiki)

Family I. Papilionidae

1. *Graphium sarpedon nipponum* (Fruhstorfer, 1903)
2. *Papilio machaon hippocrates* C. et R. Felder, 1864
3. *Papilio xuthus* Linnaeus, 1767
4. *Papilio protenor demetrius* Cramer, 1782
5. *Papilio memnon thunbergii* von Siebold, 1824
6. *Papilio helenus nicconicolens* Butler, 1881

Family II. Pieridae

7. *Eurema hecabe mandarina* (de l'Orza, 1869)
8. *Pieris rapae crucivora* Boisduval, 1836

Family III. Lycaenidae

9. *Narathura japonica* (Murray, 1875)
10. *Pseudozizeeria maha argia* (Ménétrières, 1857)
11. *Celastrina argiolus ladonides* (de l'Orza, 1869)
12. *Curetis acuta paracuta* de Nicéville, 1901

Family IV. Danaidae

13. *Parantica sita nipponica* (Moore, 1883)

Family V. Nymphalidae

14. *Argyreus hyperbius* (Linnaeus, 1763)
15. *Neptis sappho intermedia* W. B. Pryer, 1877
16. *Vanessa indica* (Herbst, 1794)

Family VI. Satyridae

17. *Ypthima argus* Butler, 1866
18. *Neope nipponica nipponica* Butler, 1881
19. *Mycalasis gotama fulginia* Fruhstorfer, 1911

Is. Koshiki (Shimo-Koshiki)

Family I. Hesperiiidae

1. *Daimio tethys daiseni* Riley, 1921
2. *Notocrypta curvifascia curvifascia* (C. et R. Felder, 1862)

Family II. Lycaenidae

3. *Narathura japonica* (Murray, 1875)
4. *Narathura bazalus turbata* (Butler, 1881)
5. *Lampides boeticus* (Linnaeus, 1767)
6. *Pseudozizeeria maha argia* (Ménétrières, 1857)
7. *Celastrina argiolus ladonides* (de l'Orza, 1869)
8. *Curetis acuta paracuta* de Nicéville, 1901

Family III. Nymphalidae

9. *Neptis sappho intermedia* W. B. Pryer, 1877

Is. Yakushima

Family I. HesperIIDae

1. *Choaspes benjaminii japonica* (Murray, 1875)
Kosugidani.
2. *Notocrypta curvifascia* (C. et R. Felder, 1862)
Anbo.

Family II. Papilionidae

3. *Graphium sarpedon nipponum* (Fruhstorfer, 1903)
Anbo.
4. *Papilio xuthus* Linnaeus, 1767
Anbo.
5. *Papilio protenor demetrius* Cramer, 1782
Nagata.
6. *Papilio memnon thunbergii* von Siebold, 1824
Nagata, Miyanoura, Hirauchi.
7. *Papilio helenus nicconicolens* Butler, 1881
Nagata, Hirauchi, Yudomari, Anbo.

Family III. Pieridae

8. *Eurema hecabe mandarina* (de l'Orza, 1869)
Yudomari, Miyanoura.
9. *Hebomoia glaucippe liukuensis* Fruhstorfer, 1898
Yudomari.

Family IV. Lycaenidae

10. *Narathura bazalus turbata* (Butler, 1881)
Hirauchi.
11. *Lycaena phlaeas daimyo* (Seitz, 1909)
Nagata.
12. *Nacaduba kurava septentrionalis* Shirôzu, 1953
Nagata, Miyanoura, Kosugidani, Hirauchi.
13. *Pseudozizeeria maha argia* (Ménétrières, 1857)
Hananoego, Hirauchi, Nagata.
14. *Curetis acuta paracuta* de Nicéville, 1901
Miyanoura.

Family V. Danaidae

15. *Parantica sita nipponica* (Moore, 1883)
Hananoego.

Family VI. Nymphalidae

16. *Argyronome ruslana lysippe* (Janson, 1877)
Hirauchi.
17. *Argyreus hyperbius* (Linnaeus, 1763)
Yudomari, Hirauchi.
18. *Kaniska cannace no-japonicum* (von Siebold, 1824)
Anbo.

19. *Vanessa indica* (Herbst, 1794)
Yudomari.
20. *Precis orthya* (Linnaeus, 1758)
Nagata.
21. *Precis almana* (Linnaeus, 1758)
Hirauchi.
22. *Cyrestis thyodamas kumamotoensis* Matsumura, 1929
Kosugidani.
23. *Dichorragia nesimachus nesiotus* Fruhstorfer, 1903
Family VII. Satyridae
24. *Yptima argus* Butler, 1866
Hananoego.
25. *Mycalesis gotama fulginia* Fruhstorfer, 1911
Anbo.
26. *Neope nipponica marumoi* Esaki et Umeno, 1929
Hirauchi.
27. *Melanitis phedima oitensis* Mtsumura, 1919
Hirauchi.

Is. Kuchierabu

- Family I. HesperIIDae
1. *Pelopidas mathias oberthueri* Evans, 1937
Family II. Papilionidae
2. *Graphium sarpedon nipponum* (Fruhstorfer, 1903)
3. *Papilio xuthus* Linnaeus, 1767.
4. *Papilio memnon thunbergii* von Siebold, 1824
5. *Papilio bianor dehanii* C. et R. Felder, 1864
6. *Papilio helenus nicconicolens* Butler, 1881
Family III. Pieridae
7. *Eurema hecabe mandarina* (de l'Orza, 1869)
8. *Eurema laeta bethesba* (Janson, 1878)
9. *Catopshilia pomona* (Fabricius, 1775)
10. *Pieris rapae crucivora* Boisduval, 1836
Family IV. Lycaenidae
11. *Narathura bazalus turbata* (Butler, 1881)
12. *Lampides boeticus* (Linnaeus, 1767)
Family V. Danaidae
13. *Anosia chrysippus* (Linnaeus, 1758)
Family VI. Nymphalidae
14. *Argyreus hypebius* (Linnaeus, 1763)
15. *Kaniska canace no-japonicum* (von Siebold, 1824)
16. *Cynthia cardui* (Linnaeus, 1758)
17. *Vanessa indica* Herdst, 1794)

18. *Precis almana* (Linnaeus, 1758)
19. *Cyretis thyodamas mabella* Fruhstorfer, 1898

Is. Amami-Oshima.

Family I. HesperIIDae

1. *Pelopidas mathis oberthueri* Evans, 1937
Naze.
2. *Udaspes folus* (Cramer, 1775)
Naze.

Family II. PapilionIDae

3. *Byasa alcinous loochooana* (Rothschild, 1896)
Naze.
4. *Papilio xuthus* Linnaeus, 1767
Yamma-kodama.
5. *Papilio polytes polycles* Fruhstorfer, 1902
Yamma-kodama, Naze.
6. *Papilio memnon thunbergii* von Siebold, 1824
Naze, Kominato.
7. *Papilio helenus nicconicolens* Butler, 1881
Yamma-kodama, Naze.
8. *Papilio bianor dehaanii* C. et R. Felder, 1864
Naze.

Family III. PierIDae

9. *Eurema hecabe mandarina* (de l'Orza, 1869)
Neze.
10. *Colias erate poliographus* Motschulsky, 1860
Naze.
11. *Catopsilia pomona* (Fabricius, 1775)
Naze.
12. *Hebomoia glaucippe liukiensis* Fruhstofer, 1898
Naze.
13. *Pieris rapae crucivora* Boisduval, 1836
Naze.

Family IV. LycaenIDae

14. *Deudorix eryx okinawana* (Matsumura, 1919)
Naze.
15. *Lampides boeticus* (Linnaeus, 1767)
Naze.
16. *Euchrysops cnejus* (Fabricius, 1798)
Naze.
17. *Nacaduba kurava septentrionalis* Shirôzu, 1953
Naze, Tatsugo, Uragami.

Family V. Libytheidae

18. *Libythea celtis amamiana* Shirôzu, 1956
Asato.

Family VI. Danaidae

19. *Parantica sita nipponica* (Moore, 1883)
Yamma-kodama, Naze.
20. *Radena similis* (Linnaeus, 1758)
Yamma-kodama, Naze.
21. *Anosia chrysippus* (Linnaeus, 1758)
Naze.

Family VII. Nymphalidae

22. *Argyreus hyperbius* (Linnaeus, 1763)
Yamma-kodama, Tatsugo.
23. *Neptis hylas luculenta* Fruhstorfer, 1907
Naze.
24. *Kaniska canace ishima* (Fruhstorfer, 1898)
Naze.
25. *Precis orithya* (Linnaeus, 1758)
Yamma-kodama.
26. *Precis armana* (Linnaeus, 1758)
Uragami, Naze.
27. *Cyrestis thyodamas mabella* Fruhstorfer, 1898
Naze.

Family VIII. Satyridae

28. *Mycalesis gotama amamina* Fujioka, 1975
Naze,
29. *Melanitis leda* (Linnaeus, 1758)
Naze.

Is. Kikai-ga-shima.

Family I. Papilionidae

1. *Papilio protenor demetrius* Cramer, 1782
2. *Papilio polytes polycles* Fruhstorfer, 1902
3. *Papilio memnon thunbergii* von Siebold, 1824

Family II. Nymphalidae

4. *Argyreus hyperbius* (Linnaeus, 1763)
5. *Precis almana* (Linnaeus, 1758)
6. *Precis orithya* (Linnaeus, 1758)

Is. Toku-no-Shima

Family I. Hesperidae

1. *Chaospes benjaminii japonica* (Murray, 1875)
2. *Potanthus flavum* (Murray, 1875)

3. *Pelopidas oberthueri* Evans, 1937
 4. *Parnara guttata* (Bremer et Grey, 1853)
 5. *Notocrypta curuifascia* (C. et R. Felder, 1862)
- Family II. Papilionidae
6. *Graphium sarpedon nipponum* (Fruhstorfer, 1903)
 7. *Papilio polytes polycles* Fruhstorfer, 1902
 8. *Papilio protenor demetrius* Cramer, 1782
 9. *Papilio memnon thunbergii* von Siebold, 1824
 10. *Papilio helenus nicconicolens* Butler, 1881
 11. *Papilio bianor dehaanii* C. et R. Felder, 1864
- Family III. Pieridae
12. *Eurema hecabe mandarina* (de l'Orza, 1869)
 13. *Colias erate poliographus* Motschulsky, 1860
 14. *Hebomoia glaucippe liukiensis* Fruhstorfer, 1898
 15. *Pieris rapae crucivora* Boisduval, 1836
- Family IV. Lycaenidae
16. *Narathura japonica* (Murray, 1875)
 17. *Lampides boeticus* (Linnaeus, 1767)
 18. *Nacaduba kurava septentrionalis* Shirôzu, 1953
 19. *Pseudozizeeria maha okinawana* Matsumura, 1929
 20. *Curetis acuta paracuta* de Nicéville, 1901
- Family V. Danaidae
21. *Parantica sita nipponica* (Moore, 1883)
 22. *Radena similis* (Linnaeus, 1758)
 23. *Anosia chrysippus* (Linnaeus, 1758)
- Family VI. Nymphalidae
24. *Argyronome laodice japonica* (Ménétriès, 1857)
 25. *Damora sagana liane* (Fruhstorfer, 1907)
 26. *Argyreus hyperbius* (Linnaeus, 1763)
 27. *Neptis sappho intermedia* W. B. Pryer, 1877
 28. *Kaniska canace ishima* (Fruhstorfer, 1898)
 29. *Cynthia cardui* (Linnaeus, 1758)
 30. *Vanessa indica* (Herbst, 1794)
 31. *Precis orithya* (Linnaeus, 1758)
 32. *Precis almana* (Linnaeus, 1758)
 33. *Hypolimnas misippus* (Linnaeus, 1764)
 34. *Hypolimnas bolina* Linnaeus, 1758
- Family VII. Satyridae
35. *Lethe sicelis* (Hewitson, 1862)
 36. *Neope goschkevitschii* (Ménétriès, 1855)
 37. *Mycalesis gotama amamiana* Fujioka, 1975
 38. *Melanitis leda* (Linnaeus, 1758)

Is. Okierabu-jima.

Family I. HesperIIDae

1. *Hasora chromus inermis* Elwes et Edwards, 1897
2. *Potanthus flavum* (Murray, 1875)
3. *Thoressa varia* (Murray, 1875)
4. *Pelopidas mathias oberthuerei* Evans, 1973

Family II. PapilionIDae

5. *Byasa alcinous loochoana* (Rothschild, 1896)
6. *Graphium Sarpedon nipponum* (Fruhstorfer, 1896)
7. *Papilio xuthus* Linnaeus, 1767
8. *Papilio polytes polycles* Fruhstorfer, 1902
9. *Papilio protenor demetrius* Cramer, 1782
10. *Papilio memnon thunbergii* von Siebold, 1824
11. *Papilio helenus nicconicolens* Butler, 1881
12. *Papilio bianor dehaanii* C. et R. Felder, 1864

Family III. PierIDae

13. *Eurema hecabe mandarina* (de l'Orza, 1869)
14. *Hebomoia glaucippe liukuensis* Fruhstorfer, 1898
15. *Pielis rapae crucivora* Boisduval, 1836

Family IV. LycaenIDae

16. *Lampides boeticus* (Linnaeus, 1767)
17. *Nacaduba kurava septentrionalis* Shirôzu, 1953
18. *Pseudozizeeria maha okinawana* (Matsumura, 1929)
19. *Zizina otis riukuensis* (Matsumura, 1929)

Family V. DanaIDae

20. *Parantica sita nipponica* (Moore, 1883)
21. *Radena similis* (Linnaeus, 1758)
22. *Anosia chrysippus* (Linnaeus, 1758)

Family VI. NymphalIDae

23. *Argyreus hyperbius* (Linnaeus, 1763)
24. *Neptis hylas luculenta* Fruhstorfer, 1907
25. *Kaniska canace ishima* (Fruhstorfer, 1898)
26. *Cynthia cardui* (Linnaeus, 1758)
27. *Hypolimnas misippus* (Linnaeus, 1764)
28. *Hypolimnas bdina* Linnaeus, 1758

Family VI. Satyridae

29. *Ypthima argus* Butler, 1866
30. *Ypthima motschulskyi nipponica* Matsumura, 1919
31. *Melanitis phedima oitensis* Matsumura, 1919
32. *Melanitis leda* (Linnaeus, 1758)

Is. Okinawa.

Family I. Hesperidae

1. *Notocrypta curvifascia curvifascia* (C. et R. Felder, 1862)
2. *Udaspes folus* (Cramer, 1775)

Family II. Papilionidae

3. *Byasa alcinous loochooana* (Rothschila, 1896)
4. *Graphium sarpedon nipponum* (Fruhstorfer, 1903)
5. *Papilio polytes polycles* Fruhstorfer, 1902
6. *Papilio memnon thunbergii* von Siebold, 1824
7. *Papilio okinawensis* Fruhstorfer, 1890

Family III. Pieridae

8. *Eurema hecabe mandarina* (de l' Orza, 1869)
9. *Catopsilia pyranthe* (Linnaeus, 1758)
10. *Catopsilia pomona* (Fabricius, 1775)
11. *Hebomoia glaucippe lukiensis* Fruhstorfer, 1898
12. *Pieris rapae crucivora* Boisduval, 1836

Family IV. Lycaenidae

13. *Lampides boeticus* (Linnaeus, 1767)
14. *Nacaduba kurava septentrionalis* Shirôzu, 1953

Family V. Danaidae

15. *Radena similis* (Linnaeus, 1758)
16. *Anosia chrysippus* (Linnaeus, 1758)
17. *Idea leuconoe riukiensis* (Holland, 1893)

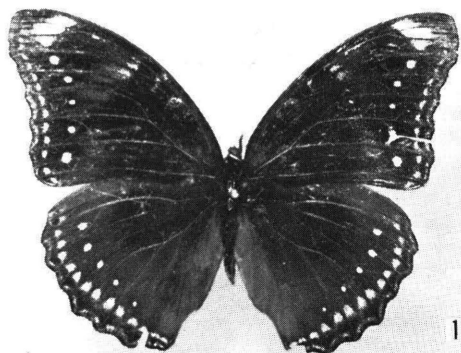
Family VI. Nymphalidae

18. *Argyreus hyperibius* (Linnaeus, 1763)
19. *Neptis hylas luculenta* Fruhstorfer, 1907
20. *Kaniska canace ishima* (Fruhstorfer, 1898)
21. *Precis almana* (Linnaeus 1758)
22. *Hypolimnas bolina bolina* (Linnaeus, 1758)
23. *Cyrestis thyodamas mabella* Fruhstorfer, 1898

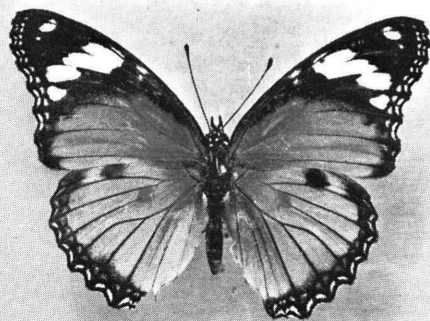
Family VII. Satyridae

24. *Melanitis leda* (Linnaeus, 1758)

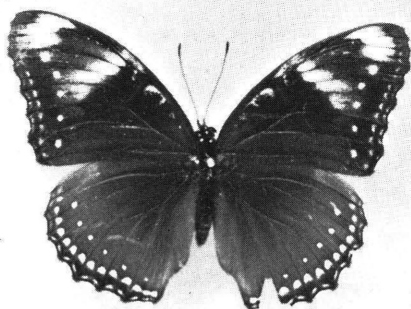
Plate 1



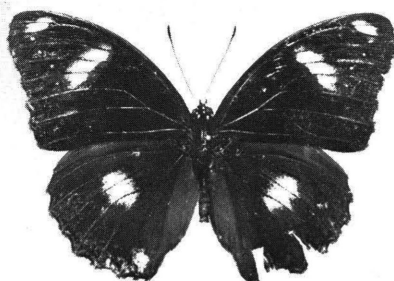
1



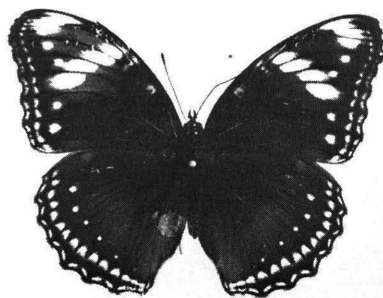
2



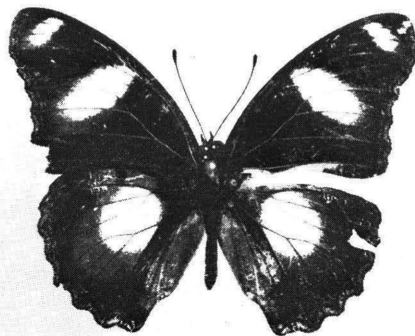
3



4



5



6

1. *Hypolimnas bolina*, (Is. Okinoerabu)
2. *Hypolimnas misippus*, (Is. Okinoerabu)
3. *Hypolimnas bolina*, (Is. Okinoerabu)
4. *Hypolimnas bolina*, (Is. Okinoerabu)
5. *Hypolimnas bolina*, (Is. Okinoerabu)
6. *Hypolimnas misippus*, (Is. Uguri Kôchi)

A List of Chrysomelid-Beetles from Japanese Appendant Islands

By

Takashi KISHII

(Biological Laboratory, Heian High School)

In this paper, I want to report a list of the family Chrysomelidae from many islands belonging Japan, which had gathered from 1931 to 1969 by the members of the biological expeditions practised and formed by the staffs and students attached to the Biological Laboratory and Club of the Heian High School.

And, as the result of the summation, 173 species representing 2337 examples are drawn up here, and their exact numbers of species and specimens in each island are as following table (Tab. II). Moreover, the determination and classificatory arrangement conformed on Dr. S. Kimoto's work : The Chrysomelidae of Japan and the Ryukyu Island (I~XI) (1964~1966) (Jour. Fac. Agr., Kyushu Univ., XIII : 99~164, 235~308, 369~459, 601~671).

All the samples used in this study are preserved in the collection of the Biological Laboratory of the Heian High School and in my collection.

Tab. II. The Investigated Islands and the Materials

- Is. Todo-jima : 2 species, 3 examples.
- Is. Rebun-tô : 11 species, 21 examples.
- Is. Rishiri-tô : 48 species, 676 examples.
- Is. Awa-shima : 35 species, 115 examples.
- Is. Hegura-jima : 13 species, 31 examples.
- Is. Ôshima in Iss. Nanatsu-jima : 1 species, 1 example.
- Is. Kammuri-jima : 22 species, 52 examples.
- Is. Dôgo in Iss. Oki : 4 species, 4 examples.
- Is. Hachijô-ga-shima : 16 species, 71 examples.
- Is. Hachijô-koshima : 5 species, 18 examples.
- Is. Kami-shima : 2 species, 6 examples.
- Is. Ki-jima : 3 species, 26 examples.
- Is. Koiso-jima : 2 species, 22 examples.
- Is. Nakate-jima : 2 species, 30 examples.
- Is. Saku-jima : 2 species, 12 examples.
- Is. Kashiwa-jima : 2 species, 3 examples.
- Is. Oki-no-shima : 25 species, 69 examples.
- Is. Uguri-jima : 5 species, 33 examples.
- Is. Hime-shima : 1 species, 1 example.
- Is. Tsushima : 69 species, 517 examples.

- Is. Naka-koshiki-jima : 5 species, 8 examples.
 Is. Tane-ga-shima : 2 species, 45 examples.
 Is. Yakushima : 36 species, 294 examples.
 Is. Kuchi-no-erabu-jima : 5 species, 13 examples.
 Is. Amami-Oshima : 15 species, 160 examples.
 Is. Toku-no-shima : 6 species, 47 examples.
 Is. Kikai-ga-shima : 8 species, 39 examples.
 Is. Oki-no-erabu-jima : 4 species, 7 examples.
 Is. Okinawa-hontô : 3 species, 6 examples.

Family **CHRYSOMELIDAE**

Subfamily **Zeugophorinae**

1. *Zeugophora (Pedrillia) annulata* (Baly, 1873)
 - Is. Rebun-tô (Kafuka) : 1 ex.
 - Is. Rishiri-tô (Mt. Rishiri, Oniwaki & Oshidomari) : 12 exs.

Subfamily **Donaciinae**

2. *Donacia (Cyphogaster) provostii* Fairmaire, 1885
 - Is. Kammuri-jima : 1 ex., 1933 (August).
 - Is. Kuchi-no-erabu-jima : 4 exs.

Subfamily **Criocerinae**

3. *Oulema atosuturalis* (Pic, 1923)
 - Is. Oki-no-shima : 1 ex.
 - Is. Tsushima (Mt. Ariake) : 1 ex.
 - Is. Yakushima (Issô) : 1 ex.
 - Is. Amami-Ôshima (Mt. Yuwan-dake) : 1 ex.
4. *Oulema tristis* (Herbst, 1786)
 - Is. Tsushima (Sasu pass) : 1 ex.
5. *Lema adamsi* Baly, 1865
 - Is. Hachijô-ga-shima : 4 exs.
 - Is. Dôgo in Iss. Oki : 1 ex.
6. *Lema honorata* Baly, 1873
 - Is. Awashima : 2 exs.
 - Is. Hachijô-ga-shima : 1 ex.
 - Is. Oki-no-shima : 4 exs.
 - Is. Tsushima (Izuhara & Sasu pass) : 4 exs.
7. *Lema concinnipennis* Baly, 1865
 - Is. Tsushima (Komoda, Mt. Ariake, Mt. Tatera & Sasuna) : 5 exs.
8. *Lema diversa* Baly, 1873
 - Is. Awashima : 3 exs.

- Is. Kammuri-jima : 2 exs., 1933 (September) ; 2 exs., 1952.
 Is. Dôgo in Iss. Oki : 1 ex.
 Is. Tsushima (Izuhara, Komoda, Mt. Ariake & Sasuna) : 7 exs.
9. *Liliocerus (Liliocerus) subpolita* (Motschulsky, 1860)
 Is. Hegura-jima : 2 exs.
 Is. Dôgo in Iss. Oki : 1 ex.
 Is. Tsushima (Mt. Ariake, Sasu pass & Uchiyama) : 6 exs.
10. *Criocerus quatuordecimpunctata* (Scopoli, 1763)
 Is. Tsushima (Komoda) : 3 exs.

Subfamily Clytrinae

11. *Smaragdina nigrifrons* (Hope, 1842)
 Is. Tsushima (Hitakatsu, Izuhara, Komoda, Mt. Ariake, Mt. Mitake, Sasuna, Sasu pass & Uchiyama) : 77 exs.
12. *Smaragdina niponensis* (Chûjô, 1951)
 Is. Kammuri-jima : 1 ex., 1933 (August).
13. *Smaragdina aurita* (Linnaeus, 1766)
 Is. Rishiri-tô (Oshidomari) : 1 ex.

Subfamily Cryptocephalinae

14. *Coenobius sulcicollis* Baly, 1874
 Is. Tsushima (Izuhara) : 2 exs.
15. *Coenobius piceipes* Gressitt, 1942
 Is. Oki-no-shima : 1 ex.
 Is. Tsushima (Izuhara & Mt. Ariake) : 2 exs.
 In the specimens from Is. Tsushima, antennae not pitchy basally, but apically.
16. *Coenobius sp.*
 Is. Hachijô-ga-shima : 4 exs.
 Intimately relate to *C. piceipes*, though pronotum punctate near hind angles only, impunctate medio-basally.
17. *Coenobius piceus* Baly, 1874
 Is. Oki-no-shima : 1 ex.
 Is. Tsushima (Komoda) : 6 exs.
18. *Pachybrachys eruditus* Baly, 1873
 Is. Rishiri-tô (Kutsugata, Oniwaki & Oshidomari) : 12 exs.
 Is. Ki-jima : 20 exs.
 Is. Koiso-jima : 20 exs.
 Is. Nakate-jima : 29 exs.
19. *Cryptocephalus approximatus* Baly, 1873
 Is. Rishiri-tô (Kutsugata, Mt. Rishiri, Oniwaki & Oshidomari) : 7 exs.
 Is. Kammuri-jima : 1 ex., 1952.
20. *Cryptocephalus scitulus* Baly, 1873
 Is. Awashima : 1 ex.

21. *Cryptocephalus perelegans* Baly, 1873
Is. Oki-no-shima : 2 exs.
Is. Tsushima (Uchiyama) : 1 ex.
22. *Cryptocephalus pumilo* Suffrian, 1854
Is. Rishiri-tô (Mt. Rishiri & Oniwaki) : 5 exs.
23. *Cryptocephalus bilineatus* (Linnaeus, 1767)
Is. Rishiri-tô (Mt. Rishiri & Oshidomari) : 13 exs.
24. *Cryptocephalus kiyosatonus* Kimoto, 1964
Is. Rebut-tô (Kafuka & Sukoton cape) : 2 exs.
Is. Rishiri-tô (Kutsugata, Mt. Rishiri, Oniwaki & Oshidomari) : 49 exs.
25. *Cryptocephalus tetradecapilotus* Baly, 1873
Is. Kammuri-jima : 1 ex., 1933 (August).
Is. Kami-shima : 2 exs.

Subfamily Lamprosomatinae

26. *Oomorplus (Oomorplus) japanus* Jacoby, 1885
Is. Kammuri-jima : 4 exs., 1956 (April).
Is. Oki-no-shima : 2 exs.
27. *Oomorphoides loochooensis* Chûjô, 1958
Is. Yakushima (Issô) : 13 exs.
28. *Oomorphoides okinawensis kurosawai* Nakane, 1958
Is. Yakushima (Hirauchi) : 17 exs.
29. *Oomorphoides cupreatus* (Baly, 1873)
Is. Rishiri-tô (Mt. Rishiri) : 1 ex.
Is. Kammuri-jima : 3 exs., 1956 (April).
Is. Oki-no-shima : 1 ex.
Is. Tsushima (Izuhara & Komoda) : 4 exs.
Is. Naka-koshiki-jima : 1 ex.
Is. Yakushima (Kosugi-dani) : 3 exs.

Subfamily Eumolpinae

30. *Acrothinium gaschkevitchii gaschkevitchii* (Motschulsky, 1860)
Is. Awashima : 2 exs.
Is. Kammuri-jima : 1 ex., 1933 (August).
Is. Hachijô-ga-shima : 3 exs.
Is. Tsushima (Izuhara) : 1 ex.
Is. Yakushima (Miyanoura) : 1 ex.
Is. Kuchi-no-erabu-jima : 1 ex.
31. *Colposcelis signata* (Motschulsky, 1858)
Is. Hachijô-ga-shima : 21 exs.
Is. Uguri-jima : 1 ex.
Is. Oki-no-shima : 5 exs.
Is. Tsushima (Izuhara, Mt. Ariake, Mt. Mitake & Sasu pass) : 5 exs.

32. *Nodina chalcosoma* Baly, 1874
 Is. Kammuri-jima : 1 ex., 1952.
 Is. Yakushima (Hirauchi) : 2 exs.
33. *Nodina sauteri* Chûjô, 1956
 Is. Kikai-ga-shima : 3 exs.
34. *Basilepta hirayamai* (Chûjô, 1935)
 Is. Yakushima (Ambô, Hirauchi, Miyanoura & Nagata) : 5 exs.
 Is. Kikai-ga-shima : 3 exs.
35. *Basilepta pallidulum* (Baly, 1874)
 Is. Awashima : 1 ex.
 Is. Hachijô-ga-shima : 1 ex.
 Is. Hachijô-koshima : 4 exs.
 Is. Ki-jima : 1 ex.
 Is. Tsushima (Izuhara) : 1 ex.
36. *Basilepta balyi* (Harold, 1873)
 Is. Rishiri-tô (Oshidomari) : 21 exs.
 Is. Hachijô-ga-shima : 3 exs.
37. *Basilepta fulvipes* (Motschulsky, 1860)
 Is. Awashima : 6 exs.
 Is. Kammuri-jima : 1 ex., 1933 (August).
 Is. Tsushima (Izuhara, Sasuna, Sasu pass & Uchiyama) : 14 exs.
 Is. Naka-koshiki-jima : 1 ex.
 Is. Yakushima (Ambô & Miyanoura) : 5 exs.
38. *Colasposoma dauricum* Mennerheim, 1849
 Is. Awashima : 1 ex.
 Is. Hegura-jima : 6 exs., 1952 (August).
 Is. Kammuri-jima : 3 exs., 1931 ; 5 exs., 1956 (July).
 Is. Tsushima (Komoda) : 1 ex.
39. *Scelodonta lewisii* Baly, 1874
 Is. Hegura-jima : 1 ex., 1952 (August).
 Is. Tsushima (Izuhara & Uchiyama) : 5 exs.
 Is. Yakushima (Nagata) : 1 ex.
40. *Demotina tuberosa* Chen, 1935
 Is. Tsushima (Uchiyama) : 1 ex.
41. *Demotina fasciculata* Baly, 1874
 Is. Hachijô-ga-shima : 5 exs.
 Is. Oki-no-shima : 1 ex.
 Is. Yakushima (Hirauchi & Issô) : 6 exs.
42. *Demotina modesta* Baly, 1874
 Is. Oki-no-shima : 1 ex.
 Is. Tsushima (Izuhara, Mt. Ariake & Uchiyama) : 22 exs.
 Is. Yakushima (Hananoégô & Hirauchi) : 13 exs.

43. *Demotina* sp.
 Is. Oki-no-shima : 4 exs.
 Is. Tsushima (Izuhara & Uchiyama) : 2 exs.
 In the body measurements and the outline of antennae, this *Demotina* is allied to *D. fasciculata*, although general body colouration is closely similar to *D. modesta*.
44. *Lypesthes ater* (Motschulsky, 1860)
 Is. Awashima : 1 ex.
45. *Bromius obscurus* (Linnaeus, 1758)
 Is. Rishiri-tô (Mt. Rishiri, Oniwaki & Oshidomari) : 15 exs.
46. *Aoria (Osmapharis) nucea* (Fairmaire, 1889)
 Is. Yakushima (Miyanoura) : 2 exs.
47. *Xanthonia placida* Baly, 1874
 Is. Hachijô-ga-shima : 2 exs.
 Is. Hachijô-koshima : 1 ex.
 Is. Tsushima (Mt. Ariake, Sasuna & Sasu pass) : 6 exs.

Subfamily Synetinae

48. *Syneta adamsii* Baly, 1877
 Is. Rishiri-tô (Mt. Rishiri) : 2 exs.

Subfamily Chrysomelinae

49. *Chrysolina aurichalcea* (Mannerheim, 1825)
 Is. Rebun-tô (Kafuka) : 1 ex.
 Is. Rishiri-tô (Oshidomari) : 2 exs.
 Is. Awashima : 1 ex.
 Is. Hegura-jima : 5 exs., 1952 (April).
 Is. Kammuri-jima : 1 ex., 1951.
 Is. Hachijô-koshima : 2 exs.
 Is. Tsushima (Sasuna & Uchiyama) : 2 exs.
 Is. Yakushima (Hirauchi) : 2 exs.
 Is. Amami-Ôshima (Akaogi & Nishinakama) : 2 exs.
50. *Chrysolina nikolskyi* (Jacobson, 1898)
 Is. Rishiri-tô (Mt. Rishiri) : 47 exs.
51. *Chrysolina angusticollis* (Motschulsky, 1860)
 Is. Rishiri-tô (Oniwaki & Oshidomari) : 3 exs.
52. *Chrysolina aeruginosa* (Faldermann, 1835)
 Is. Rishiri-tô (Mt. Rishiri) : 2 exs.
53. *Phaedon brassicae* Baly, 1874
 Is. Tsushima (Sasuna) : 1 ex.
54. *Plagioderia versicolora* (Laicharting, 1781)
 Is. Rishiri-tô (Kutsugata, Oniwaki & Oshidomari) : 11 exs.
 Is. Awashima : 4 exs.

55. *Phratora longula* Motschulsky, 1860
Is. Rishiri-tô (Mt. Rishiri & Oniwaki) : 47 exs.
56. *Phola octodecimguttata* (Fabricius, 1775)
Is. Amami-Ôshima (Mt. Yuwan-dake & Nishinakama) : 47 exs.
Is. Toku-no-shima (Mikyô) : 3 exs.
Is. Okinawa-hontô (Shuri) : 3 exs.

Subfamily Galerucinae

57. *Pyrrhalta konishii* Kimoto, 1963
Is. Rishiri-tô (Mt. Rishiri & Oshidomari) : 8 exs.
58. *Pyrrhalta semifulva* (Jacoby, 1885)
Is. Rishiri-tô (Kutsugata, Oniwaki & Oshidomari) : 4 exs.
Is. Tsushima (Sasu pass) : 1 ex.
59. *Pyrrhalta lineola* (Fabricius, 1781)
Is. Tsushima (Izuhara & Mt. Ariake) : 62 exs.
60. *Pyrrhalta calvariensis* (Linnaeus, 1767)
Is. Rishiri-tô (Oniwaki & Oshidomari) : 2 exs.
61. *Pyrrhalta esakii* Kimoto, 1963
Is. Rishiri-to (Oniwaki) : 1 ex.
62. *Pyrrhalta humeralis* (Chen, 1942)
Is. Awashima : 16 exs.
63. *Pyrrhalta annulicornis* (Baly, 1874)
Is. Tsushima (Izuhara, Mt. Ariake, Sasuna, Sasu pass & Uchiyama) : 17 exs.
64. *Pyrrhalta fuscipennis* (Jacoby, 1885)
Is. Rishiri-tô (Mt. Rishiri, Oniwaki & Oshidomari) : 41 exs.
65. *Pyrrhalta seminigra* (Jacoby, 1885)
Is. Awashima : 2 exs.
66. *Aulacophora bicolor* (Weber, 1801)
Is. Amami-Oshima (Yamma to Kodama) : 35 exs.
Is. Toku-no-shima (Mikyô) : 12 exs.
67. *Aulacophora lewisii* Baly, 1886
Is. Amami-Ôshima (Mt. Yuwan-dake) : 1 ex.
68. *Aulacophora femoralis* (Motschulsky, 1857)
Is. Awashima : 1 ex.
Is. Hegura-jima : 2 exs., 1952 (April).
Is. Hachijô-ga-shima : 10 exs.
Is. Hachijô-koshima : 10 exs.
Is. Kami-shima : 4 exs.
Is. Ki-jima : 5 exs.
Is. Koiso-jima : 2 exs.
Is. Nakate-jima : 1 ex.
Is. Saku-jima : 5 exs.
Is. Oki-no-shima : 3 exs.

- Is. Kashiwa-jima : 2 exs.
 Is. Uguri-jima : 3 exs.
 Is. Tsushima (Sasuna) : 2 exs.
 Is. Yakushima (Hirauchi, Issô & Miyanoura) : 46 exs.
 Is. Kuchi-no-erabu-jima : 2 exs.
 Is. Amami-Ôshima (Naze) : 12 exs.
 Is. Kikai-ga-shima : 3 exs.
 Is. Toku-no-shima (Mikyô) : 14 exs.
 Is. Oki-no-erabu-jima : 1 ex.
 Is. Okinawa-hontô (Shuri) : 2 exs.
69. *Aulacophora loochooensis* Chûjô, 1957
 Is. Amami-Ôshima (Mt. Yuwan-dake) : 1 ex.
70. *Aulacophora nigripennis nigripennis* Motschulsky, 1857
 Is. Awashima : 2 exs.
 Is. Kammuri-jima : 2 exs., 1931 ; 1 ex., 1933 (June) ; 2 exs., 1951 ; 2 exs., 1952.
 Is. Saku-jima : 7 exs.
 Is. Tsushima (Izuhara) : 2 exs.
 Is. Tane-ga-shima : 2 exs.
 Is. Yakushima (Hirauchi, Issô, Miyanoura & Nagata) : 41 exs.
 Is. Kuchi-no-erabu-jima : 3 exs.
 Is. Kikai-ga-shima : 8 exs.
71. *Aulacophora nigripennis nitidipennis* Chûjô, 1935
 Is. Amami-Ôshima (Mt. Yuwan-dake, Naze, Nishinakama & Yamma) : 14 exs.
 Is. Toku-no-shima (Mikyô) : 5 exs.
 Is. Oki-no-erabu-jima : 4 exs.
72. *Fleutiauxia armata* (Baly, 1874)
 Is. Rishiri-tô (Mt. Rishiri & Oshidomari) : 13 exs.
73. *Paridea (Paraulaca) angulicollis* (Motschulsky, 1853)
 Is. Awashima : 1 ex.
 Is. Kashiwa-jima : 1 ex.
 Is. Tsushima (Izuhara) : 4 exs.
 Is. Yakushima (Miyanoura) : 1 ex.
74. *Morphosphaera japonica* Hornstedt, 1788
 Is. Oki-no-shima : 3 exs.
 Is. Tsushima (Izuhara & Mt. Tatera) : 4 exs.
75. *Morphosphaera coerulea* (Schönfeldt, 1890)
 Is. Yakushima : 2 exs.
 Is. Amami-Ôshima (Mt. Yuwan-dake) : 11 exs.
 Is. Toku-no-shima (Mikyô) : 1 ex.
 Is. Oki-no-erabu-jima : 1 ex.
76. *Luperus viridipennis murakamii* Kimoto, 1965
 Is. Rishiri-tô (Mt. Rishiri) : 3 exs.
77. *Exosoma chujoii* (Nakane, 1958)

- Is. Oki-no-shima : 5 exs.
 Is. Hime-shima : 1 ex.
 Is. Yakushima (Miyamoura) : 2 exs.
78. *Exosoma* sp.
 Is. Tsushima (Mt. Ariake, Sasuna, Sasu pass & Uchiyama) : 17 exs.
 The outline and aedeagus are close to *Exosoma flaviventre*, but legs and antennae are entirely black and apex of penis not so sharply pointed in dorsal view. May be a local variation of *flaviventre*.
79. *Exosoma flaviventre* (Motschulsky, 1860)
 Is. Awashima : 9 exs.
 Is. Kammuri-jima : 1 ex., 1952.
80. *Stenoluperus bicarinatus* (Weise, 1889)
 Is. Rebun-tô (Kafuka) : 1 ex.
 Is. Rishiri-tô (Oniwaki) : 2 exs.
81. *Stenoluperus cyaneus* (Baly, 1874)
 Is. Rebun-tô (Kafuka) : 1 ex.
 Is. Tsushima (Sasuna) : 1 ex.
82. *Stenoluperus niponensis* (Laboissière, 1885)
 Is. Rishiri-tô (Oniwaki) : 1 ex.
 Is. Kammuri-jima : 1 ex., 1952.
 Is. Tsushima (Sasuna) : 1 ex.
83. *Stenoluperus* sp.
 Is. Rishiri-tô (Kutsugata, Numaura, Oniwaki & Oshidomari) : 5 exs.
 Very similar to *S. cyaneus*, though size a little larger, female antennae in 4th joint shorter than combined length of 2nd and 3rd, and pronotal punctures smaller and sparser.
84. *Paraluperodes suturalis nigrobilineatus* (Motschulsky, 1860)
 Is. Awashima : 1 ex.
85. *Atrachya menetriesi* (Faldermann, 1835)
 Is. Todo-jima : 2 exs.
 Is. Rebun-tô (Kafuka & Sukoton cape) : 9 exs.
 Is. Rishiri-tô (Kutsugata, Motodomari, Mt. Rishiri, Numaura, Oniwaki & Oshidomari) : 74 exs.
 Is. Awashima : 12 exs.
 Is. Oki-no-shima : 1 ex.
 Is. Yakushima (Hananoégô & Mt. Miyamoura) : 61 exs.
86. *Monolepta shirozui* Kimoto, 1965
 Is. Tsushima (Izuhara, Mt. Ariake, Mt. Mitake, Sasuna & Uchiyama) : 11 exs.
87. *Monolepta dichroum* Harold, 1877
 Is. Rishiri-tô (Kutsugata & Oshidomari) : 2 exs.
 Is. Awashima : 5 exs.
 Is. Oki-no-shima : 4 exs.
88. *Monolepta kurosawai* Chûjô et Ohno, 1961

- Is. Awashima : 1 ex.
89. *Monolepta pallidulum* (Baly, 1874)
 Is. Awashima : 11 exs.
 Is. Kammuri-jima : 1 ex., 1933 (August) ; 1 ex., 1951 ; 2 exs., 1952.
 Is. Oki-no-shima : 4 exs.
 Is. Uguri-jima : 24 exs.
 Is. Naka-koshiki-jima : 1 ex.
 Is. Tsushima (Izuhara, Mt. Ariake & Sasu pass) : 15 exs.
 Is. Yakushima (Kosugidani) : 1 ex.
90. *Monolepta chujo* Nakane et Kimoto, 1961
 Is. Amami-Ôshima (Akagina to Akaogi) : 1 ex.
91. *Agelasa nigriceps* Motschulsky, 1860
 Is. Awashima : 1 ex.
 Is. Yakushima (Miyanoura) : 9 exs.
92. *Gallerucida bifasciata* Motschulsky, 1860
 Is. Awashima : 3 exs.
 Is. Hegura-jima : 1 ex., 1952 (April).
 Is. Kammuri-jima : 1 ex., 1958.

Subfamily Alticinae

93. *Nonarthra cyaneum* Baly, 1874
 Is. Dôgo in Iss. Oki : 1 ex.
 Is. Yakushima (Hirauchi) : 4 exs.
94. *Nonarthra formosense flavomarginatum* Chûjô, 1957
 Is. Amami-Ôshima (Naze) : 1 ex.
95. *Psylliodes punctifrons* Baly, 1874
 Is. Awashima : 2 exs.
 Is. Kammuri-jima : 7 exs., 1956 (April).
96. *Psylliodes bretteghami* Baly, 1862
 Is. Kikai-ga-shima : 5 exs.
97. *Psylliodes* sp.
 Is. Kammuri-jima : 1 ex., 1933 (June).
 Plainly larger than *punctifrons*, very beautiful bluish violet with distinct tint all over, anterior half of frons sparsely punctured and the posterior perfectly smooth.
98. *Psylliodes subrugosa* Jacoby, 1885
 Is. Rishiri-tô (Kutsugata & Oniwaki) : 2 exs.
99. *Psylliodes attenuata* (Koch, 1803)
 Is. Hegura-jima : 1 ex., 1952 (August).
100. *Psylliodes angusticollis* Baly, 1874
 Is. Rishiri-tô (Kutsugata, Mt. Rishiri, Oniwaki & Oshidomari) : 8 exs.
 Is. Hegura-jima : 2 exs., 1952 (August).
 Is. Tsushima (Sasuna & Uchiyama) : 2 exs.

- Is. Kikai-ga-shima : 1 ex.
101. *Chaetocnema (Tlanoma) basalis* Baly, 1877
Is. Yakushima (Miyanoura) : 2 exs.
102. *Chaetocnema (Tlanoma) concinna* (Marshall, 1802)
Is. Rishiri-tô (Kutsugata, Mt. Rishiri & Oshidomari) : 4 exs.
103. *Chaetocnema (Tlanoma) discreta* (Baly, 1877)
Is. Hachijô-ga-shima : 1 ex.
Is. Tsushima (Komoda & Mt. Ariake) : 2 exs.
104. *Chaetocnema (Chaetocnema) concinnicollis* (Baly, 1874)
Is. Rishiri-tô (Oshidomari) : 1 ex.
Is. Awashima : 1 ex.
Is. Hachijô-ga-shima : 1 ex.
105. *Chaetocnema (Chaetocnema) cylindrica* (Baly, 1874)
Is. Rebun-tô (Sukoton cape) : 1 ex.
106. *Chaetocnema (Chaetocnema) ingenua* (Baly, 1876)
Is. Rishiri-tô (Kutsugata, Mt. Rishiri & Oshidomari) : 8 exs.
107. *Pseudoliprus suturalis* (Jacoby, 1885)
Is. Tsushima (Sasuna) : 3 exs.
108. *Pseudoliprus kurosawai* (Nakane, 1958)
Is. Yakushima (Mt. Miyanoura) : 2 exs.
109. *Pseudoliprus hirtus* (Baly, 1874)
Is. Tsushima (Sasuna) : 4 exs.
110. *Sangariola punctatostriata* (Motschulsky, 1860)
Is. Hegura-jima : 1 ex., 1952 (April).
111. *Asiolestia obscuritarsis* (Motschulsky, 1859)
Is. Rishiri-tô (Oshidomari) : 1 ex.
112. *Asiolestia interpunctata* (Motschulsky, 1859)
Is. Todo-jima : 1 ex.
Is. Rishiri-tô (Kutsugata & Mt. Rishiri) : 4 exs.
113. *Asiolestia laevicollis* (Jacoby, 1885)
Is. Tsushima (Izuhara) : 1 ex.
114. *Hippuriphila babai* (Chûjô, 1959)
Is. Rishiri-tô (Oniwaki & Oshidomari) : 14 exs.
115. *Crepidodera japonica* Baly, 1877
Is. Rishiri-tô (Oniwaki & Oshidomari) : 3 exs.
116. *Lythraria salicariae* (Paykull, 1800)
Is. Hachijô-ga-shima : 1 ex.
117. *Mantura clavareaux* Heikertinger, 1874
Is. Rishiri-tô (Motodomari, Oniwaki & Oshidomari) : 8 exs.
Is. Hegura-jima : 2 exs., 1952 (April) ; 1 ex., 1952 (August).
118. *Mantura japonica* Jacoby, 1885

- Is. Rishiri-tô (Oniwaki) : 2 exs.
119. *Philopona vibex* (Erichson, 1834)
 Is. Awashima : 7 exs.
 Is. Tsushima (Sasuna) : 1 ex.
120. *Argopistes coccinelliformis* Csiki, 1874
 Is. Hachijô-ga-shima : 1 ex.
 Is. Oki-no-shima : 1 ex.
121. *Argopus nigritarsis* (Gebler, 1823)
 Is. Tsushima (Sasu pass) : 1 ex.
122. *Sphaeroderma apicale* Baly, 1874
 Is. Awashima : 1 ex.
 Is. Tsushima (Mt. Ariake) : 1 ex.
123. *Sphaeroderma quadrimaculatum* Chûjô, 1935
 Is. Okinawa-hontô (Naha) : 1 ex.
124. *Sphaeroderma unicolor* Kimoto, 1965
 Is. Tsushima (Izuhara, Mt. Ariake, Mt. Mitake & Sasuna) : 9 exs.
125. *Sphaeroderma fuscicorne* Baly, 1864
 Is. Tsushima (Sasuna) : 8 exs.
126. *Sphaeroderma balyi* Jacoby, 1885
 Is. Awashima : 2 exs.
127. *Hemipyxis balyi cinctipennis* (Weise, 1890)
 Is. Yakushima (Hirauchi, Miyanoura & Nagata) : 22 exs.
 Is. Kuchi-no-erabu-jima : 3 exs.
 Is. Amami-Ôshima (Akagina, Mt. Yuwan-dake & Nishinakama) : 7 exs.
 Is. Kikai-ga-shima : 15 exs.
128. *Longitarsus quadraticollis* Jacoby, 1885
 Is. Yakushima (Kosugidani) : 2 exs.
129. *Longitarsus bimaculatus* (Baly, 1874)
 Is. Oki-no-shima : 2 exs.
130. *Longitarsus lewisii* (Baly, 1874)
 Is. Rishiri-tô (Kutsugata & Mt. Rishiri) : 9 exs.
 Is. Yakushima (Nagata) : 1 ex.
131. *Longitarsus sp.*
 Is. Awashima : 1 ex.
 General outline similar to *L. lewisii* in colouration especially, though much larger, 3rd antennal joint clearly longer than 2nd, vartex smooth, frontal tubercles obscure and antennal colouration darkar.
132. *Longitarsus sp.*
 Is. Tsushima (Izuhara) : 1 ex.
 Length 3.3 mm., elytral sutures and hind femorae blackish, head with a deep oblique groove behind frontal tubercles, antennae slender but not longer than body. Generally similar to *L. nitidus*.
133. *Longitarsus cervinus* Baly, 1874

- Is. Tsushima (Komoda, Mt. Ariake & Sasu pass) : 4 exs.
134. *Longitarsus nitidus* Jacoby, 1885
Is. Awashima : 5 exs.
135. *Longitarsus orientalis* Jacoby, 1885 ?
Is. Hegura-jima : 2 exs., 1952 (August).
Body almost yellowish brown except of black eyes.
136. *Longitarsus nitidiamiculus* Kimoto, 1965
Is. Rishiri-tô (Oniwaki) : 6 exs.
Is. Tsushima (Mt. Ariake) : 3 exs.
137. *Longitarsus amicus* (Baly, 1874)
Is. Rebun-tô (Sukoton cape) : 1 ex.
Is. Rishiri-tô (Kutsugata, Mt. Rishiri, Numaura, Oniwaki & Oshidomari) : 112 exs.
Is. Awashima : 1 ex.
Is. Tsushima (Mt. Ariake) : 1 ex.
138. *Luperomorpha irisae* Kimoto, 1966
Is. Tsushima (Sasuna) : 12 exs.
139. *Luperomorpha pryri* (Baly, 1874)
Is. Tsushima (Izuhara, Komoda, Mt. Ariake, Sasuna, Sasu pass & Uchiyama) : 27 exs.
Is. Yakushima (Hirauchi & Miyanoura) : 2 exs.
140. *Luperomorpha funesta* (Baly, 1874)
Is. Tsushima (Sasuna) : 17 exs.
141. *Phyllotreta striolata* (Fabricius, 1803)
Is. Rishiri-tô (Oniwaki & Oshidomari) : 3 exs.
Is. Tsushima (Mt. Ariake & Uchiyama) : 2 exs.
142. *Phyllotreta rectilineata* Chen, 1939
Is. Tsushima (Komoda) : 2 exs.
143. *Aphthona foudrasi* Jacoby, 1885
Is. Tsushima (Izuhara) : 1 ex.
144. *Aphthona strigosa* Baly, 1874
Is. Kammuri-jima : 1 ex., 1952.
Is. Hachijô-ga-shima : 12 exs.
Is. Oki-no-shima : 14 exs.
Is. Uguri-jima : 2 exs.
Is. Tsushima (Izuhara, Mt. Ariake, Sasu pass & Uchiyama) : 45 exs.
Is. Yakushima (Hirauchi) : 3 exs.
145. *Aphthona formosana* Chen, 1934
Is. Yakushima (Hananoégô) : 1 ex.
Is. Amami-Ôshima (Yamma to Kodama) : 9 exs.
146. *Aphthona nigrita* (Ohno, 1961)
Is. Yakushima (Hirauchi & Miyanoura) : 7 exs.
147. *Aphthona perminuta* Baly, 1874

- Is. Rishiri-tô (Kutsugata & Oniwaki) : 7 exs.
 Is. Oki-no-shima : 2 exs.
 Is. Uguri-jima : 1 ex.
 Is. Tsushima (Izuhara, Mt. Ariake, Sasuna, Sasu pass & Uchiyama) : 15 exs.
148. *Trachyaphthona sordida* (Baly, 1874)
 Is. Okino-shima : 1 ex.
 Is. Tsushima (Sasuna) : 3 exs.
 One example from Is. Tsushima body entirely yellowish brown.
149. *Batophila acutangula* Heikertinger, 1921
 Is. Yakushima (Hirauchi & Kosugidani) : 5 exs.
150. *Horaia esakii* Chûjô et Ohno, 1961
 Is. Oki-no-shima : 2 exs.
151. *Manobidia fulva* (Chûjô, 1957)
 Is. Yakushima (Hirauchi) : 1 ex.
152. *Manobidia nipponica* Chûjô, 1959
 Is. Tsushima (Sasuna) : 4 exs.
153. *Manobia lewisi* Jacoby, 1885
 Is. Yakushima : 1 ex.
154. *Aphthonaltica angustata* (Baly, 1874)
 Is. Tsushima (Sasuna) : 2 exs.
155. *Ogloblinia flavicornis* (Baly, 1874)
 Is. Oki-no-shima : 3 exs.
 Is. Tsushima (Izuhara, Mt. Ariake & Sasuna) : 7 exs.
 Is. Yakushima (Issô) : 6 exs.
 Is. Kikai-ga-shima : 1 ex.
156. *Altica latericosta subcostata* Ohno, 1960
 Is. Hegura-jima : 1 ex., 1952 (August).
157. *Altica cyanea* (Weber, 1801)
 Is. Naka-koshiki-jima : 4 exs.
 Is. Amami-Ôshima (Akagina, Mt. Yuwan-dake, Shinmura & Yakkatsu) : 17 exs.
 Is. Toku-no-shima (Mikyô) : 12 exs.
158. *Altica circaeae* Ohno, 1960
 Is. Awashima : 2 exs.
 Is. Hachijô-ga-shima : 1 ex.
 Is. Hachijô-koshima : 1 ex.
159. *Altica caerulescens* (Baly, 1874)
 Is. Naka-koshiki-jima : 2 exs.
160. *Altica oleracea* (Linnaeus, 1758)
 Is. Rebun-tô (Kafuka) : 2 exs.
 Is. Rishiri-tô (Kutsugata, Mt. Rishiri, Numaura, Oniwaki & Oshidomari) : 52 exs.
161. *Altica* sp.
 Is. Tsushima (Sasu pass) : 4 exs.
 Closely allied to *A. oleracea*, but elytral punctures of these materials smaller

and sparsar.

162. *Altica viridicyanea* (Baly, 1874)
Is. Kammuri-jima : 1 ex., 1931.
Is. Tsushima (Izuhara, Komoda, Sago, Sasu pass & Uchiyama) : 13 exs.

Subfamily Hispinae

163. *Dactylispa masonii* Gestro, 1923
Is. Tsushima (Uchiyama) : 1 ex.
164. *Hispellinus moerens* (Baly, 1874)
Is. Hegura-jima : 4 exs., 1952 (August).
Is. Ôshima in Iss. Nanatsu-jima : 1 ex.
165. *Platypria melli* Uhmman, 1955
Is. Tsushima (Hitakatsu) : 1 ex.

Subfamily Cassidinae

166. *Aspidomorpha difformis* (Motschulsky, 1860)
Is. Awashima : 2 exs.
167. *Thlaspida biramosa japonica* (Spaeth, 1914)
Is. Tsushima (Izuhara & Mt. Ariake) : 2 exs.
168. *Cassida (Taiwania) versicolor* (Boheman, 1855)
Is. Tsushima (Kamoize) : 1 ex.
169. *Cassida (Taiwania) circumdata* Herbst, 1790
Is. Tane-ga-shima : 43 exs.
Is. Yakushima : 1 ex.
Is. Amami-Ôshima (Akagina to Akaogi) : 1 ex.
Is. Oki-no-erabu-jima : 1 ex.
170. *Cassida (Cassida) nebulosa* Linnaeus, 1758
Is. Rebun-tô (Sukoton cape) : 1 ex.
Is. Rishiri-tô (Kutsugata, Mt. Rishiri & Oshidomari) : 24 exs.
171. *Cassida (Cassida) piperata* Hope, 1842
Is. Awashima : 1 ex.
Is. Kammuri-jima : 1 ex., 1952
Is. Oki-no-shima : 1 ex.
172. *Cassida (Cassida) fusciorufa* Motschulsky, 1866
Is. Awashima : 3 exs.
173. *Cassida (Cassida) rubiginosa* Müller, 1776
Is. Rebun-tô (Sukoton cape) : 1 ex.
Is. Rishiri-tô (Oshidomari) : 1 ex.