

NOTES ON ELATERIDAE FROM JAPAN AND  
ITS ADJACENT AREA (1), WITH THE  
DESCRIPTION OF A NEW SPECIES  
(COLEOPTERA)

by

Takashi KISHII

---

Reprinted from

BULLETIN OF THE HEIAN HIGH SCHOOL

KYOTO, JAPAN

No. 25, July 1981

# NOTES ON ELATERIDAE FROM JAPAN AND ITS ADJACENT AREA (1), WITH THE DESCRIPTION OF A NEW SPECIES (COLEOPTERA)

by

Takashi KISHII

Biological Laboratory, Heian High School  
(Shichijō-ōmiya, Shimokyo-ku, Kyōto 600, Japan)

**Synopsis** A new species of the subfamily Agriotinae from the central mountains of Honshū are described and illustrated: *Dalopius naomii* sp. nov. Some Elaterid-lists are reported from many localities of Japan and Taiwan.

In this paper, I want to report three interesting Elaterid-lists from many localities in Japan and its adjacent region with the description of a new species and some notes on the new distribution.

One of the lists is carried out on the samples of click-beetles from the Nansei Archipelago in March 1978 and from Honshū in June 1980 collected by Mr. Shun-ichirō Naomi of Kyūshū University, for which I express my sincere gratitude. It consists of many species and examples containing a new *Dalopius*-species from the central mountains of Honshū.

Secondarily, a brief list on the Elaterid-beetles from Taiwan, Is. Ishigaki-jima and Is. Hachijō-ga-shima is reported. The material was captured at Nanshanchi of Nantou Hsien, Taiwan in 1980, Is. Ishigaki-jima in 1975 and at Is. Hachijō-ga-shima of the Izu Archipelago in 1980 by Mr. Masamichi Yagi who is an earnest collector of the longicorn-beetles, and I had a chance to study and was requested to identify through his good offices.

The last information based on the interesting samples brought by Mr. Shigeto Yamaya is made on the remains of some Elaterid-beetles. These remains were gathered from the excrements of *Mayailurus iriomotensis* Imaizumi, 1967, by the difficult researching work of Dr. Shigeki Yasuma of Tōkyō University at Is. Iriomote-jima in the Yayeyama Islands in 1974~1977.

Before going further, I wish to express my cordial thanks to Messrs. S. Naomi, M. Yagi, S. Yamaya and Dr. S. Yasuma for their courteous helps especially in offering the valuable collection at my disposal.

## I. Elaterid-beetles from the Nansei Archipelago and Honshū collected by Mr. Shun-ichirō Naomi, with the description of *Dalopius naomii* sp. nov.

**Is. Ishigaki-jima** (Ishigaki City): March 16, 1978.

1. *Agrypnus (Colaulon) miyakoensis* (Ohira, 1969), 8 males & a female.

2. *Melanotus (Melanotus) yayeyamacola* Kishii, 1974, 2 males.
3. *M. (M.) loochooensis loochooensis* Miwa, 1929, 4 males & a female.

**Is. Iriomote-jima** (Ohara): March 19, 1978.

1. *Rismethus scobinula* (Candèze, 1857), 14 examples.

The reporting of this small species from Is. Iriomote-jima has not been hitherto given out entirely.

2. *Melanotus (Melanotus) yayeyamacola* Kishii, 1974, a male.
3. *M. (M.) tanchamelis tamurai* Kishii, 1974, 2 females.

**Is. Amami-Oshima** (Hatsuno): March 27, 1978.

1. *Agrypnus (Colaulon) scrofa amamianus* (Kishii, 1974), a female. (Fig. 1)
2. *Aeoloderma agnata* (Candèze, 1873), 6 examples.

This common species has been hitherto unknown from this island, and it is the southernmost distribution.

3. *A. brachmana* (Candèze, 1959), an example.
4. *Ampedus (Ampedus) aritai aritai* Ohira et Sato, 1964, a male.

**Shimane Prefecture** (Masuda City): June 1, 1980.

1. *Agrypnus (Sabikikorius) fuliginosus* (Candèze, 1865), a male & 2 females.
2. *A. (Colaulon) miyamotoi tsukamotoi* (Kishii, 1956), 2 males.
3. *Aeoloderma agnata* (Candèze, 1873), a male.
4. *Melanotus (Melanotus) annosus* Candèze, 1865, 2 males.
5. *M. (M.) senilis* Candèze, 1865, 12 examples.
6. *Neohypdonus kadowakii* Kishii, 1976, 2 males & 2 females.
7. *Paracardiophorus musculus opacus* (Lewis, 1894), 5 examples.

**Tottori Prefecture** (Mt. Daisen): June 2~4, 1980.

1. *Pectocera fortunei fortunei* Candèze, 1873, a male.
2. *Agrypnus (Agrypnus) cordicollis* (Candèze, 1865), 2 females.
3. *A. (A.) binodulus binodulus* (Motschulsky, 1861), a female.
4. *Kibunea eximia* (Lewis, 1894), a female.
5. *Denticollis niponensis* Ohira, 1973, 3 males & 3 females.
6. *D. miniatus* (Candèze, 1885), 2 males.
7. *Corymbitodes gratus* (Lewis, 1894), a female.
8. *Neopristilophus serrifer* (Candèze, 1873), a male.
9. *Calambus mundulus* (Lewis, 1879), a female.
10. *Ampedus (Ampedus) hypogastricus* (Candèze, 1873), a female.
11. *Ectinus sericeus sericeus* (Candèze, 1878), 7 examples.
12. *Dolerosomus gracilis* (Candèze, 1873), 27 males & 45 females.
13. *Melanotus (Melanotus) legatus legatus* Candèze, 1860, a male.
14. *M. (M.) legatoides* Kishii, 1975, a male.
15. *Neohypdonus kadowakii* Kishii, 1976, a male.
16. *Paracardiophorus musculus opacus* (Lewis, 1894), 2 males & 3 females.
17. *Dicronychus (Platynychus) nothus nothus* (Candèze, 1865), an example.

**Gifu Prefecture** (Hirayu Spa): June 7~8, 1980.

1. *Colioascerus saxatilis* (Lewis, 1894), a female.
2. *Hypolithus motschulskyi fleutiauxi* Ohira, 1968, a female.
3. *Gambrinus niponensis* (Lewis, 1894), a male.
4. *Denticollis niponensis* Ohira, 1973, a female.
5. *Actenicerus yamashitai* Ohira, 1968, 6 males & a female.
6. *Calambus mundulus* (Lewis, 1879), a female.
7. *Ectinus longicollis* (Lewis, 1894), a male & a female.
8. *Melanotus (Melanotus) correctus correctus* Candèze, 1865, a male.

**Gifu Prefecture** (Shinhotaka Spa): June 11~12, 1980.

1. *Anostirus (Ipostirus) daimio* (Lewis, 1894), a male.
2. *Corymbitodes gratus* (Lewis, 1894), a female.
3. *Ampedus (Ampedus) pachycollis* Ohira, 1973, a male. (Figs. 2~4)
4. *Ectinus longicollis* (Lewis, 1894), 3 males & a female.
5. *E. sericeus sericeus* (Candèze, 1878), a female.
6. *Dalopius exilis exilis* Kishii, 1956, a female.
7. *D. naomii* Kishii, new species, 2 males & a female.

***Dalopius naomii*, sp. nov.**

(Figs. 5~8, 10 & 11)

Male 5.9~6.2×1.7~1.8 mm, female 6.8~8.0×2.0~2.1 mm. Elongate, rather slender, well depressed above as well as beneath longitudinally, subparallel-sided on anterior half, a little expanded laterally behind elytral middle. More or less subopaque generally. Reddish brown generally; antennae and legs paler than body coloration; head blackish brown posteriorly; pronotal disc dark brown on most median part with pale fore and rear margin; 5th abdominal segment more or less pale apico-marginally; female more or less darker than male. Pubescence long, almost recumbent, dense and fulvous entirely.

Head broad, relative breadth of each eye and vertex between eyes in dorsal view 5 : 21, weakly convex above behind summit, with an extent shallow depression between eyes and a medio-longitudinal shallow channel on anterior half. Frontal edge well carinate definitely, a little projecting antero-laterally before eyes, then substraightly and obliquely extending medianly, not conglutinating with clypeal margin, which is transversely straightened and well limited. Vertical surface with ocellate, dense and large punctures which are generally even in size and density, sometimes partly reticulate mutually except that postero-lateral corners sparse. Interpunctate surface smooth.

Antennae slender, very long, explicitly longer than combined length of head and prothorax including hind angles by 4 apical joints or more in male, and by 2 ones in female; relative length and width of 1st to 5th joint as 10 : 4, 4.2 : 3, 4.5 : 3, 7 : 4 and 6 : 3.2 in male (holotype), and 13 : 4, 5.5 : 2.8, 6.5 : 3, 8 : 3.8 and 8 : 3.5 in female; basal joint longest, cylindrical and slightly sinuate, somewhat curved banana-formedly

with an acute edge on hind margin; 2nd cylindrical and subclavate; 3rd subobconic; 4th to 10th ill-serrate or rather subfiliformed ; 11th ca. 3.5 times as long as wide and longitudinally rhombic.

Pronotum feebly convex above medianly, with a clear medio-longitudinal canaliculation, which is more or less evanescent anteriorly as well as posteriorly; relative median length and maximum width 39 : 37 exclusive of hind angles; lateral sides in upper view narrowest behind middle, well roundly expanded outwards behind frontal corners, then substraightly and a little convergingly extending posteriorly; hind angles diverging postero-outwards, elongate and subacutely pointed at each apex, with a fine distinct carina on each corner, which extends antero-obliquely until rear one-3rd length of prothorax. Surface generally shagreen-likely sculptured wholly, with dense, single and large punctures, but more or less sparser and smaller than those on vertical ones, and generally uneven in density.

Scutellum subtongue-shaped, flattened, slightly declivous antero-obliquely; relative median length and basal width 9 : 7; subparallel-sided behind middle, then straightly converged to apex, which is rather acutely pointed; surface minutely granulated densely and entirely.

Elytra weakly expanded medio-laterally, thence gently converging to humeral angles as well as apical ends which are moderate in shape; relative length of suture and median breadth 50 : 18.5; striae fine with elongate and discontinuous punctures; strial intervals perfectly flattened and smooth, with minute and sparse granules; humeral parts distinctly wider than distance across apices of pronotal hind angles.

Prosternal punctures very dense, ocellate and reticulate partly. Prosternal sutures broad, double and plainly divergent antero-outwards. Process in profile broad, parallel-sided and straightly extending backwards with a conspicuous and acute projection at apical one-3rd, then distinctly excavated inwards; apex bluntly pointed; lateral sides a little concave with minute shagreen-like sculpture. Propleural punctures similar to prosternal ones generally, but exceedingly denser than those on prosternum. Metasternal punctures also allied to those on prosternum, but generally faint. Legs moderate, not so slender.

Male genitalia as figured (Figs. 10 & 11); median lobe conspicuously broad with semicircular and wide apex; each lateral lobe rather short with a small blunt projection at apico-lateral side and each apex obtusely pointed having 3 long setae; basal plate very large and distinctly longer than median breadth. Each bundle of sclerotic radiate thornes in bursa copulatrix of female genitalia (Fig. 8) similar to other Japanese *Dalopius* species (*D. miwai*: Fig. 9)

Described from a male holotype, Shinhotaka Spa in Gifu Prefecture, June 12, 1980, S.-I. Naomi leg.; a male and a female paratype, ditto; a female paratype, Mt. Iide in Niigata Prefecture, July 25, 1956, H. Koike leg.; a male paratype, Shimajima Valley in Nagano Prefecture, August 6, 1965, K. Tsumura leg.; a female paratype, ditto, July 25 ~29, 1974, A. Nishitai leg.; a female paratype, Azusa-yama in Nagano Prefecture, July 21, 1979, T. Wakejima leg.

*Remarks.* In the general outline of this new *Dalopius*-species is closely similar to *D.*

*nipponensis* Ohira, 1970 and *D. exilis exilis* Kishii, 1956, though the former having the brownish body, elongate antennae and the broad median lobe of the male genitalia is clearly discernible from the other known Japanese *Dalopius*-species. Moreover, the general feature of the aedeagus in this species is somewhat related to that of *D. miwai* Ohira, 1972 (Fig. 12) in the broad appearances, but the simple semicircular apex of the median lobe and the large basal plate in the present new species are indisputable differences.

8. *D. miwai* Ohira, 1972, a male & 2 females.
9. *Yukoana elliptica* (Candèze, 1873), a male.

**Nagano Prefecture** (Myôkô-kôgen to Sasa-ga-mine): June 14, 1980.

1. *Anostirus (Ipostirus) daimio* (Lewis, 1894), a female.
2. *Dalopius patagiatus* (Lewis, 1894), a male.

**Yamagata Prefecture** (Mt. Chôkai-zan): June 19~20, 1980.

1. *Corymbitodes gratus* (Lewis, 1894), a male & a female.
2. *Actenicerus orientalis* (Candèze, 1889), a male.
3. *A. yamashitai* Ohira, 1968, a male.
4. *Ectinus nipponicus* Kishii, 1979, a male & a female.
5. *Dalopius patagiatus* (Lewis, 1894), a male & 2 females.
6. *D. miwai* Ohira, 1972, 2 males & 2 females.
7. *Yukoana elliptica* (Candèze, 1873), 2 females.

**Iwate Prefecture** (Mt. Hayachine to Kawaraba): June 22~24, 1980.

1. *Colioascerus saxatilis* (Lewis, 1894), a female.
2. *Denticollis versicolor* (Lewis, 1894), 3 males & 4 females.
3. *Corymbitodes gratus* (Lewis, 1894), a female.
4. *Ectinus dahuricus persimilis* (Lewis, 1894), a female.
5. *E. nipponicus* Kishii, 1979, a male.
6. *E. insidiosus* (Lewis, 1894), a female.
7. *Dalopius exilis exilis* Kishii, 1956, a male.
8. *D. miwai* Ohira, 1972, a male.
9. *Cardiophorus pinguis* Lewis, 1894, a female.

**Aomori Prefecture** (Mayoi-ga-daira) : June 26~28, 1980.

1. *Denticollis versicolor* (Lewis, 1894), a male.
2. *Corymbitodes gratus* (Lewis, 1894,) a female.
3. *Ampedus (Ampedus) pauxillus* (Lewis, 1894), a female.
4. *Dalopius exilis exilis* Kishii, 1956, a male & 2 females.

## II. Elaterid-beetles from Taiwan, Is. Ishigaki-jima and Is. Hachijô-ga-shima collected by Mr. Masamichi Yagi

**Taiwan** (Nanshanchi, Nantou Hsien): February 19 to April 26, 1980.

1. *Xanthopenthes granulipennis* (Miwa, 1929)

- April 26 (a female).
2. *Pseudolater habunensis* (Miwa, 1934) (Figs. 14 & 15)  
 Feb. 19 (4 males & a female); Feb. 27 (a female); Feb. 29 (4 males & 2 females); March 16 (a male & 2 females); March 17 (3 females); March 19 (4 males & 6 females); March 20 (12 males & 10 females); March 21 (6 males & 5 females); March 25 (3 females); March 27 (3 females); March 28 (a female); March 30 (2 females).
  3. *Ampedus (Parelater) shirozui* Ohira, 1966  
 Feb. 29 (a male).
  4. *A. (Ampedus) fulvipennis* Ohira, 1967 (Fig. 17)  
 March 19 (a male); March 21 (a female).
  5. *A. (A.) formosensis* (Miwa, 1929) (Fig. 18)  
 Feb. 19 (an example); March 16 (an example); March 19 (an example); March 21 (10 examples).
  6. *A. (A.) cambodiensis* (Fleutiaux, 1918) (Fig. 16)  
 Feb. 19 (2 examples); Feb. 29 (an example); March 19 (6 examples); March 21 (7 examples).
  7. *Ectinus nokoanus* (Miwa, 1928), comb. nov. (Fig. 19)  
*Agriotes nokoanus* Miwa, 1928, Ins. Mats., III(1): 45 (Formosa).  
 This species is undoubtedly an *Ectinus*-species in the head characteristics etc.  
 Feb. 20 (an example); Feb. 27 (3 examples); Feb. 29 (19 examples); March 19 (6 examples); March 20 (8 examples); March 21 (24 examples); March 25 (an example); March 27 (9 examples); March 28 (5 examples); March 29 (6 examples); March 30 (9 examples); April 1 (an example).
  8. *Chiagosnius obscuripes* (Gyllenhal, 1817)  
 April 26 (a female).
  9. *Vuilletus mushanus* (Miwa, 1928) (Fig. 20)  
 Feb. 19 (6 examples); March 16 (2 examples); March 19 (12 examples); March 20 (2 examples); March 21 (7 examples); March 25 (an example).
  10. *Melanotus (Spheniscosomus) melanotoides* (Miwa, 1930) (Fig. 21)  
 March 28 (an example); April 14 (an example).
  11. *M. (Melanotus) umber* Bates, 1866 (Fig. 22)  
 March 16 (an example); March 19 (an example); March 25 (an example).
  12. *M. (M.) tamsuyensis* Bates, 1866 (Fig. 23)  
 March 16 (a male).

**Is. Ishigaki-jima** (Tomino): August 5, 1975.

1. *Lacon (Alaotypus) churakagi* (Ohira, 1971), an example. (Fig. 13)

**Is. Hachijô-ga-shima**: June 28 to August, 1980.

1. *Lacon (Alaotypus) maenamii* (Ohira, 1969)  
 August (a female).
2. *Paracalais berus* (Candèze, 1864)  
 August (2 females).

3. *Athous (Pseudathous) secessus izuinsulanus* (Kishii, 1977)  
Sueyoshi, June 28 (a male & a female); Nakanogo, June 29 (a male).
4. *Stenagostus umbratilis* (Lewis, 1894)  
August (a female).
5. *Melanotus (Melanotus) hachijoensis* Ohira, 1969  
Sueyoshi, June 28 (a female).
6. *M. (Kensakulus) erythropygus* Candèze, 1873  
Sueyoshi, June 28 (a male); August (a female).

### III. The click-beetles found from the excrements of *Mayailulus iriomotensis* Imaizumi

All the Elaterid-samples used in this list were wholly collected by Dr. Shigeki Yasuma of Tôkyô University at Is. Iriomote-jima from May 1974 to December 1977, and the determination of the excrements discharged by *Mayailurus iriomotensis* Imaizumi, 1967, also was done by him.

1. *Agrypnus (Sabikikorius) sakaguchii* (Miwa, 1927)
2. *A. (Agrypnus) bipapulatus sakishimanus* Ohira, 1967
3. *Lacon (Alaotypus) yayeyamanus* (Miwa, 1934)
4. *Paracalais larvatus larvatus* (Candèze, 1874)
5. *Glyphonyx pallidipes* Miwa, 1934 (?)
6. *Chiagosnius delauneyi fuscomarginatus* (Lewis, 1896)
7. *Elater (Elater) sieboldi* (Candèze, 1873)
8. *Neodiploconus satoi matobai* Kishii, 1973

### Literatures

- Flautiaux, E. (1918) : Nouvelles contributions a la faune de l'Indo-chine française (Coleoptera Sericornia), *Ann. Soc. ent. Fr.*, **LXXXVII**: 175~278.
- Hayek, C. M. F. (1973) : A reclassification of the subfamily Agrypninae (Coleoptera: Elateridae), *Bull. B. M. (N. H.)*, Ent., Suppl. **20**: 1~309.
- .....(1979) : Additions and corrections to 'A reclassification of the subfamily Agrypninae (Coleoptera: Elateridae)', *Bull. B. M. (N. H.)*, Ent., **38**(5): 183~261.
- Kishii, T. (1974) : Elaterid-beetles from the Ryûkyû Archipelago, collected by Messrs. I. Matoba, O. Tamura and T. Takahashi in the spring of 1973, with some new forms and notes, "The snappers of island (VII)", *Bull. Heian High Sch.*, **18**: 1~19.
- .....(1975) : Some new forms of Elateridae in Japan (VIII), *Bull. Heian High Sch.*, **19**: 1~7.
- .....(1976) : New Negastrinae with some notes, "Some new forms of Elateridae in Japan (X)", *Bull. Heian High Sch.*, **20**: 17~46.
- .....(1977) : Some new forms of Elateridae in Japan (XII), *Sci. Rep. Kyoto Prefecture*, **15**: 49~61.
- Miwa, Y. (1928) : New and some rare species of Elateridae from the Japanese Empire,



- Ins. Mats.*, **III**(1) : 36~51.
- .....(1929) : Elateridae of Formosa (II), *Trans. nat. Hist. Soc. Formosa*, **XIX** (105) : 485~495.
- .....(1930) : Elateridae of Formosa (IV), *Trans. nat. Hist. Soc. Formosa*, **XX** (107) : 57~68.
- .....(1934) : The fauna of Elateridae in the Japanese Empire, *Rep. Dep. Agr. Gov. res. Inst., Formosa*, **65** : 1~289.
- Ohira, H. (1966 a) : Notes on some Elaterid-beetles from Formosa II, *Kontyu*, **34** (3) : 266~274.
- .....(1966 b) : Notes on some Elaterid-beetles from Formosa III, *Kontyu*, **34** (4) : 331~338.
- .....(1967) : Notes on some Elaterid-beetles from Formosa IV, *Kontyu*, **35** (1) : 55~59.
- .....(1969) : Notes on some species of Elateridae of the Izu Islands (Coleoptera), *Trans. Shikoku ent. Soc.*, **10**(2) : 41~48.
- .....(1970) : New or little-known Elateridae from Japan, XII (Coleoptera), *Bull. Japan ent. Acad.*, **5** (1) : 9~13.
- .....(1971) : New or little-known Elateridae from Japan, XIII (Coleoptera), *Kontyu*, **39** (1) : 39~40.
- Ohira, H. & Makihara, T. (1975) : Notes on some Elaterid-beetles from Formosa collected by the member of the Kagoshima University Biological Club (Coleoptera), *Rep. Formosan Expedition Kagoshima Univ., Biol. Club (Col.)* : 1~56.
- Stibick, J. N. L. (1979) : Classification of the Elateridae (Coleoptera), relationships and classification of the subfamilies and tribes, *Pacific Ins.*, **20**(2~3) : 145~186.

## 摘 要

最近、多くの同好諸氏の御厚意により様々な地域から得られた、コメツキムシ科甲虫の提供を受けたり、又同定の依頼があり、その中で特に興味深いものについてリストを作製し、大方の参考に資することを願ったのが本報告である。

今回はその中から三氏の御好意によるものを選んだのであるが、その第一にあげたものは九州大学農学部直海俊一郎氏により、南西諸島から本州北部にいたる採集行で得られたものであり、特に1980年6月の略一ヶ月間に島根県益田市から北上して、青森県迷ヶ平に終る間の採集品はこの時期の本州各地での主要なコメツキ種の概要を知る上で、なかなか興味のある資料となっていると思われる。更にその中には岐阜県新穂高温泉産のもので、明らかな末記載種があったが、この種はすでに筆者所有の標本中に長らく疑問種として若干のものがあり、今回のものを検して新種であることが明瞭になったので、*Dalopius naomii* (ナオミヒメコメツキ、新称)なる新名で記載した。

次にあげたのは大阪豊中市に在住され、御自身コンピューター会計事務所を経営されながら、極めて熱心なる天牛類研究家でもある八木正道氏が、台湾南山溪及び八丈島等で採集されたコメツキムシ類の同定依頼を受けたもののリストであるが、台湾山地二~三月頃の訪花性コメツキの主なものが含まれ、且つ採集個体数の多い点が目を引くものと思う。

今回最後に報告するものは、このリスト中最も特異なものであろう。本年三月、長岡市の山屋茂人氏の御来訪を受け、西表島にのみ棲息する、あの有名なイリオモテヤマネコの糞中から

取り出された、コメツキの残骸の同定を依頼されたのであるが、このようなことは筆者にとり初の経験で興味深いものであった。この資料は東京大学森林動物学教室の安間繁樹博士が、同氏論文に用いる資料として同氏が長期間の極めて労苦の多い調査活動で得られ、且つ資料がイリオモテヤマネコに由来することを確定されたもので、山屋氏が昆虫部分の調査をお手伝いしていたものとのことであるが、この貴重な研究の一端でお役に立てたことは筆者にとり喜ばしいことであった。この詳細は安間博士の論文で明らかにされるものと思うが、コメツキに関しては、大型のものはいざ知らず、中には極めて小型の種例えば、*Glyphonyx pallidipes* の上翅一片があったりして、このようなものを自発的に食したのかどうか等考えざるを得ないものもある。これらの点についても近い将来山屋氏が何等かの形で矢張り論述を発表されるものと思うので、今回は興味ある参考資料として種名リストのみ発表したものである。

文末であるが、貴重な資料を検査する機会を与えられた上記各氏には心からの謝意を表すものである。

(昭和56年5月3日記)

Plate I

- Fig. 1. *Agrypnus (Colaulon) scrofa amamianus* (Kishii, 1974)**  
Hatsuno in Is. Amami-ôshima, August 11 ~13, 1977, A. Seino leg. (9.5mm).
- Fig. 2. *Ampedus (Ampedus) pachycollis* Ohira, 1973**  
Male, Shinhotaka Spa in Gifu Prefecture, June 11 ~12, 1980, S.-I. Naomi leg. (12.4 mm) (3724).
- Fig. 3. Ditto**, male genitalia.
- Fig. 4. Ditto**, left lateral lobe of male genitalia.
- Fig. 5. *Dalopius naomii* Kishii, sp. nov.**  
Male, holotype, Shinhotaka Spa in Gifu Prefecture, June 12, 1980, S.-I. Naomi leg. (5.9 mm) (3749).
- Fig. 6. Ditto.**  
Male, paratype, ditto (6.5 mm) (3781).
- Fig. 7. Ditto.**  
Female, paratype, Shimajima Valley in Nagano Prefecture, July 25 ~29, 1974, A. Nishitai leg. (8.0 mm) (3787).
- Fig. 8. Ditto**, a pair of bundles of sclerotic radiate thornes in bursa copulatrix.
- Fig. 9. *Dalopius miwai* Ohira, 1972**, ditto to Fig. 8.  
Female, Mt. Komaga-take in Akita Prefecture, July 7, 1978, K. Baba leg. (3613).
- Fig. 10. *Dalopius naomii* Kishii, sp. nov.**  
Male genitalia, ditto to Fig. 5.
- Fig. 11. Ditto** to Fig. 6.
- Fig. 12. *Dalopius miwai* Ohira, 1972**  
Male genitalia, Tokugô Pass in Nagano Prefecture, July 10, 1951, H. Ishida leg. (335).

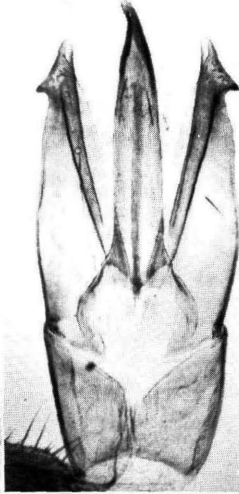
Plate I



1



2



3



4



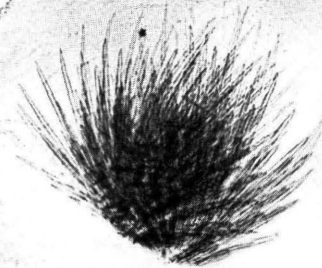
5



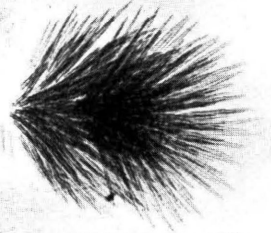
6



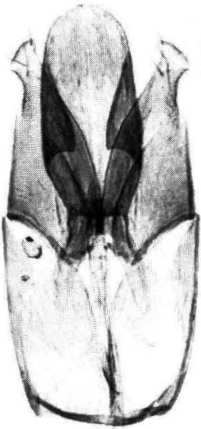
7



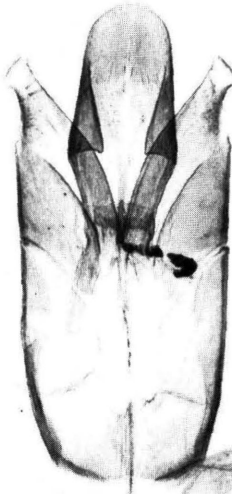
8



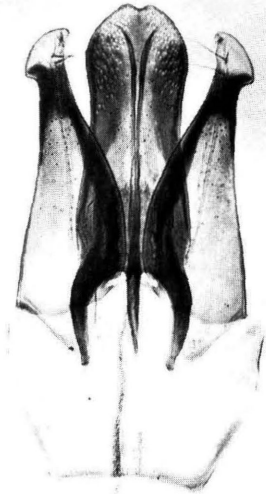
9



10



11



12

## Plate II

- Fig. 13. *Lacon (Alaotypus) churakagi* (Ohira, 1971)  
Tomino in Is. Ishigaki-jima, August 5, 1975, M. Yagi leg. (16.5 mm).
- Fig. 14. *Pseudelater habunensis* (Miwa, 1934)  
Male, Nanshanchi in Taiwan, February 11, 1980, M. Yagi leg. (9.5 mm).
- Fig. 15. Ditto, female, ditto (12.5 mm).
- Fig. 16. *Ampedus (Ampedus) cambodiensis* (Fleutiaux, 1918)  
Female, Nanshanchi in Taiwan, February 19, 1980, M. Yagi leg. (9.5 mm).
- Fig. 17. *Ampedus (Ampedus) fulvipennis* Ohira, 1967  
Male, Nanshanchi in Taiwan, March 19, 1980, M. Yagi leg. (6.5 mm).
- Fig. 18. *Ampedus (Ampedus) formosensis* (Miwa, 1929)  
Female, Nanshanchi in Taiwan, March 21, 1980, M. Yagi leg. (8.5 mm).
- Fig. 19. *Ectinus nokozanus* (Miwa, 1928)  
Male, Nanshanchi in Taiwan, February 27, 1980, M. Yagi leg. (10.5 mm).
- Fig. 20. *Vuilletus mushanus* (Miwa, 1928)  
Male, Nanshanchi in Taiwan, March 20, 1980, M. Yagi leg. (6.0 mm).
- Fig. 21. *Melanotus (Spheniscosomus) melanotoides* (Miwa, 1930)  
Nanshanchi in Taiwan, April 14, 1980, M. Yagi leg. (17.0 mm).
- Fig. 22. *Melanotus (Melanotus) umber* Bates, 1866  
Female, Nanshanchi in Taiwan, March 25, 1980, M. Yagi leg. (14.0 mm).
- Fig. 23. *Melanotus (Melanotus) tamsuyensis* Bates, 1866  
Male, Nanshanchi in Taiwan, March 16, 1980, M. Yagi leg. (15.5 mm).

Plate II



13



14



15



16



17



18



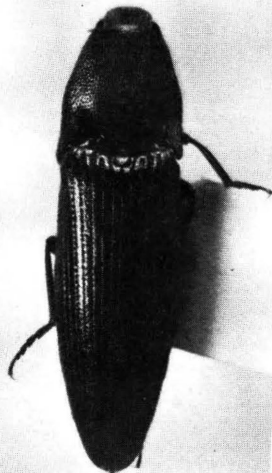
19



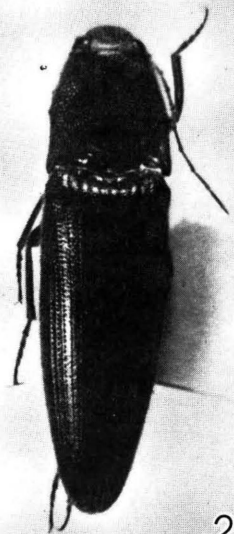
20



21



22



23