

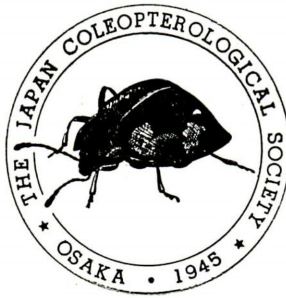
VOL. XIX, No. 1.

MAY, 1967.

THE ENTOMOLOGICAL REVIEW OF JAPAN

# 昆蟲學評論

第十九卷 第一号



日本甲蟲學會

THE JAPAN COLEOPTEROLOGICAL SOCIETY

OSAKA

## 投 稿 規 定

1. 投稿は原則として会員に限る。掲載は受領順によるが、全額実費負担の原稿は優先的に取扱う。
2. 欧文の原稿は1行80字内外にタイプライトすること。なお、必ず和文表題を末尾に付記すること。
3. 和文の原稿は横書き、現代かなづかいによる平かなとし、用紙はなるべく本会指定のもの(41字×15行)を使用すること。なお、必ず欧文表題を付し、なるべくRésuméをつけること。
4. 原稿は刷上り、欧文8頁、和文10頁、および図版2葉以内とし、超過分は著者の実費負担とする。
5. 昆虫の学名は Damaster blaptoides KOLLAR のように、命名者は全記し、それぞれアンダーラインをひくこと。
6. Data の記載は次のように略記すること。2♂♂, 1♀, Oct. 23, 1960 又は 23. X. 1960.
7. 文献は本文の終りに著者名のアルファベット順に一括記載すること。雑誌名および巻号は次のように省略すること。 DELKESKAMP, K. 1959; Zur Systematik einiger *Triplax*-Arten aus Ostasien, Ent. Rev. Japan, 10 (2) : 39-42.
8. 図版は横2に対し、縦3の割合で作成し、説明は必ず本文の終りに記入すること。Text figure の挿入位置は必ず原稿の欄外に朱記し、その部分に図の説明を記入し、図には単に“第何図”とのみ記すること。
9. 別刷は100部単位とし、30部は学会で費用を負担するが、それ以外は実費を申受ける。希望者は原稿第1頁の欄外に部数を朱記すること。
10. 活字の指定および校正は編集幹事に一任して戴きたい。登載ずみの原稿は返却しないが、原図および写真はあらかじめ申し出のあった場合には返却する。
11. 報文の性質上、本誌よりもより適当な発表機関が他にあると考えられる場合には、原稿を返送することがある。又、不備な原稿は書き直しを要求することがある。
12. 投稿先は、大阪市東住吉区西鷹合町3丁目1 鷹合住宅199号, 林 匡夫 気付とする。

THE ENTOMOLOGICAL REVIEW OF JAPAN

VOL. XIX, No. 1.

MAY, 1967.

Descriptions of Few New Forms of the Genus *Aphodius*  
ILLIGER from Japan  
(Coleoptera : Scarabaeidae)

By TAKEHIKO NAKANE

Division of Entomology, National Science Museum, Tokyo

In this paper I describe a new subgenus of the genus *Aphodius* and two new species belonging to the new subgenus. The material on which the present work is based was offered to me from Messrs. M. GOTO, T. IIMURA, K. MASUMOTO and T. SHIBATA, and I wish to express here my cordial thanks to them for their kindness.

Subgen. *Paremadus* nov. (Gen. *Aphodius*)

Type species: *Aphodius* (*Emadus*?) *isaburoi* NAKANE, 1956

Small, black or blackish brown species, with the elytra often reddish or yellowish brown at apical and basal or humeral regions and along the suture, and rarely entirely brown. Upper surface glabrous.

Head without tubercles on the frontal suture, but often with an obsolete trace of elevation just in front of the middle. Clypeus slightly emarginate in front and rounded on both sides of the emargination, and the lateral margins oblique and sublinear. Cheeks moderately produced laterally beyond the eyes, with their outer margin nearly continuous with that of clypeus in front and obtusely rounded before the eyes. Pronotum more or less strongly convex, with the front margin immarginate, the base margined by a punctate-groove, which is sometimes interrupted at middle, and the hind angles obtusely but distinctly angulate and well-marked from above by the slight sinuations just before and inside them. Outer edge of basal and lateral margins often minutely crenulate. Scutellum triangular, of usual size in the genus. Elytra bearing a small but distinct tooth on each shoulder, and the 2nd interval and usually the 3rd connected with the lateral (10th and 9th) at their apex.

Terminal setae of four hinder tibiae relatively long and of unequal length. First joint of metatarsi nearly as long as the three following joints combined together.

Terminal spur of the fore tibiae usually slightly curved downwards at the apex.

Differs from the subgenus *Orodalus* in having convex body and distinctly angulate hind angles of pronotum. From the subgenus *Chilothorax* (= *Volinus*) it may be distinguishable by the punctate-grooved basal margin of pronotum, longer 1st joint of metatarsi and distinct humeral tooth of elytra.

*Aphodius (Paremadus) mizo* sp. nov. (Pl. 1, fig. 1)

Black, with the margin of head, sides of pronotum, under surface of head and prothorax, apical portion of abdomen, and the legs reddish brown, the mouth organs and funicles of antennae also reddish or yellowish brown. Elytra reddish brown, each with the sutural margin and a large patch occupying the basal two-thirds blackish; 1st or sutural interval (except the inner margin), base of 2nd and the humeral prominence always reddish, and usually the base of 3rd interval and lateral area also reddish; sometimes the blackish patch reduced and obscure.

Oblong, strongly convex and moderately shining above. Head slightly convex, and very closely and strongly punctured, with the front margin slightly emarginate at middle and rounded on both sides, the lateral margins of clypeus oblique and feebly sinuate in front of the cheeks, which are rounded-produced laterally beyond the eyes, and the frontal suture fine and unarmed with tubercles. Pronotum transverse, about a third broader than long, subparallel-sided, rather strongly convex and closely and strongly punctured on the disc, very densely punctured at sides, with a shallow but distinct median longitudinal furrow, which is abbreviated in front, and fine punctures sparingly scattered among the strong punctures; sides rounded in front together with the front angles and feebly sinuate before the angulate hind angles when seen from above, the base slightly sinuate on both sides and margined by a distinct punctate-groove, the marginal edge of basal and lateral borders very finely crenulate and the crenulation becoming obsolete and indistinct on the anterior half of lateral margins. Scutellum triangular, flat and bearing punctures at the base. Elytra strongly convex above, about two-fifths longer than wide, very gradually widened from base to middle, then rounded-narrowed to apex, and the disc rather finely punctate-striate; the striae punctures rather strong and weakly notching the intervals on the dorsum, and coarse and markedly notching the intervals in lateral striae; intervals finely and sparingly punctured, flat or very slightly convex on the disc and convex on apical portion, and two lateral intervals convex throughout; surface bearing a weak reticulate microsculpture, which is often obsolete on the intervals near the suture; humeral tooth small but conspicuous.

Metathorax moderately closely punctured, broadly flattened (♀) or depressed (♂) in the middle with a median longitudinal furrow, and strongly shagreened and opaque on both sides. Abdomen distinctly shagreened and opaque, and sparsely bearing short hairs. Fore tibia bearing three sharp outer teeth, of which the median is nearer to the apical than to the basal, and its terminal spur slightly bent downwards at the apex in the male. First joint of hind tarsi about as long as the three following together and distinctly longer than the upper terminal spur of hind tibia.

Body length: 3.3–4.0 mm.

The present species closely resembles *A. isaburoi* NAKANE, but the punctuation of the head and pronotum is much closer, the pronotum bears a median longitudinal

furrow and the male genitalia are distinctly smaller with their apex bent downwards.

Holotype (♂) & allotype (♀): Minoo, Osaka, Honshu, Japan, 2. IV. 1959, E. KONISHI leg. Paratypes: 5 ♂, Minoo, Osaka, Honshu, 2. IV. 1959, K. UEDA leg.; 1 ♂, Minoo, Osaka, Honshu, 24. III. 1959, K. UEDA leg.; 1 ♀, Tohnomine, Nara, Honshu, 17. IV. 1960, E. KONISHI leg.; 1 ♂, Kasuga, Nara, Honshu, 16. IV. 1960, M. GOTO leg.; 1 ♂, Kasuga, Nara, Honshu, 22. IV. 1960, M. GOTO leg.

*Aphodius (Paremadus) masumotoi* sp. nov. (Pl. 1, fig. 2)

Black, with the outer margin of head, front angles and narrow side margins of pronotum, under side of fore body, abdomen and the legs reddish brown, the scutellum and sutural regions of elytra and apex of elytra broadly reddish, and the mouth organs and funicles of antennae reddish or yellowish brown.

Oblong and robust, somewhat amplicated posteriorly, strongly convex and strongly shining above. Head slightly convex, closely but rather finely punctured and somewhat rugose, with a trace of elevation just in front of the middle, the front margin feebly emarginate at middle and weakly rounded on both sides, the lateral margins oblique, the frontal suture only distinct on both sides, and the cheeks moderately produced laterally and obtusely rounded. Prothorax strongly convex, transverse, widest at basal angles, with the side margins feebly sinuate before base and slightly divergent to the angles, and gradually narrowed forwards from the middle; front angles rounded, the hind ones angulate, the basal margin slightly sinuate on both sides, margined with a punctate-groove; disc moderately closely and strongly punctured, and the punctures becoming closer at sides. Scutellum smooth and nearly flat and impunctate. Elytra strongly convex, gradually widened from base to middle and then rounded posteriorly, finely striate and the striae punctures strong but slightly notching the intervals on the dorsum; intervals sparingly and minutely punctured, flat on the dorsum and distinctly convex or costate on apical portion and in three lateral ones; humeral tooth acute and conspicuous.

Metathorax broadly flattened or depressed and coarsely punctured in middle, and shagreened, opaque and finely aciculate-punctate on both sides. Abdomen subopaque, shagreened, obsolete granulate and sparsely bearing short hairs. Tibia of fore legs bearing three outer teeth, which are sharp and equidistant, and its terminal spur slightly bent and acutely pointed at the apex in the male. First joint of hind tarsi about as long as the three following combined and much longer than the upper terminal spur of hind tibia.

Body length: ca. 4 mm.

Very closely allied to *A. isaburoi* NAKANE, but the upper surface is more shining and more blackish in colour, the pronotum is more visibly widened at the base and its punctuation is closer, the humeral tooth is larger and more conspicuous, and the humeral prominence is nearly always concolorous with its surrounding.

Holotype (♂), allotype (♀) & 5 paratypes: Sagami-Oyama, Honshu, Japan, 31. XII. 1966, K. MASUMOTO leg. Paratypes: 3 ex., Sagami-Oyama, Honshu, 23. XI. 1966, K. MASUMOTO leg.; 3 ♀, Miyagase, Aiko, Kanagawa, Honshu, 17. XI. 1964, T. IMURA leg.

*Aphodius (Paremadus) isaburoi* NAKANE

*Aphodius (Emadus?) isaburoi* NAKANE, 1956, Ins. Matsum., 20: 119.

*Aphodius (Orodalus?) isaburoi*: BALTHASAR, 1964, Mon. Scarab. u. Aphod., 3: 201.

*Aphodius (Paremadus) pallidiligonis* WATERHOUSE

*Aphodius pallidiligonis* WATERHOUSE, 1875, Trans. Ent. Soc. London, 85.

*Aphodius (Volinus) pallidiligonis*: SCHMIDT, 1922, Tierr. 45, Aphod., 165, 191.

*Aphodius (Volinus?) pallidiligonis*: BALTHASAR, 1964, Mon. Scarab. u. Aphod., 3: 258.

*Caelius nipponensis* BALTHASAR, 1956, Ent. Blätter, 52: 70.

In this species the basal groove of pronotum is interrupted at the middle.

Holotype, allotype and a few paratypes are in coll. NAKANE now preserved in the National Science Museum.

(Partly aided by the Government Research Fund for Science from the Ministry of Education.)

## Explanation of Plate 1.

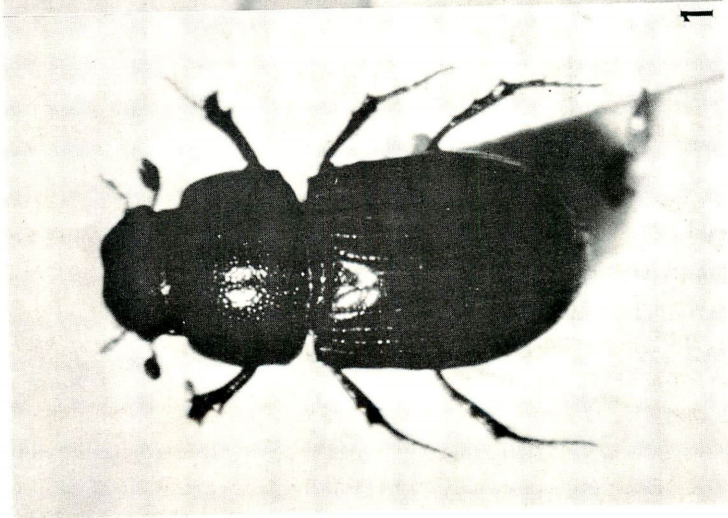
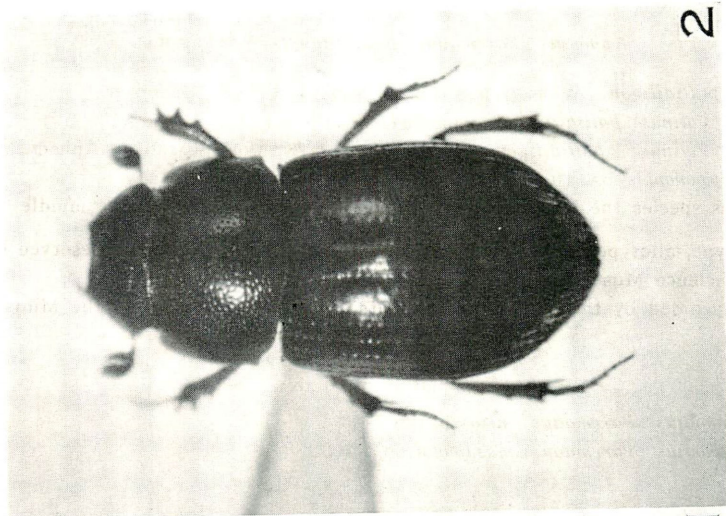
1. *Aphodius (Paremadus) mizo* sp. nov.
2. *Aphodius (Paremadus) masumotoi* sp. nov.

## 第18回(昭和41年度)大会記録

第18回大会を昭和41年11月20日午後1時から、追手門学院高等部の階段教室において開催した。

恒例により会務会計報告があつて後、横山創氏の“八重山諸島の甲虫類”特に石垣島・西表島・与那国島のカミキリムシについて、8ミリカラーの映写による講演、引き続き後藤光男氏の“奈良公園の食糞コガネムシについて”その生態を主体とした講演、最後に沢田高平氏の“アリツカムシ科の亜科に関する知見”について、邦産6亜科に関し主として小腮枝・下唇枝・上唇などの形態からみた分類の問題点につき、多数のチャートを用いた講演がそれぞれ行なわれ、午後5時盛会裡に終了した。

当日の出席者(アルファベット順・敬称略)はつぎのとおりである。朝田武雄・後藤光男・生谷義一・石田 裕・河野 洋・児玉 務・草間慶一・水野弘造・水田国康・中山紘一・奈良 一・大倉正文・沢田高平・重井 博・杉原治男・谷 幸三・塚口茂彦・八木沼健夫・横山 創・吉川正彦。(大倉)



(K. MASUMOTO photo.)





# The Mordellidae from Formosa

By SIZUMU NOMURA

Up to the present, many contributions concerning the Mordellid-fauna of Formosa have been published by M. PIC (1911, 12, 26), H. KÔNO (1928-36), M. CHÛJÔ (1935), T. NAKANE (1950), S. NOMURA (1950, 51, 58, 65) and others as listed in references, and 45 species have been known from this region.

Recently, I have had an opportunity to study the large number of the specimens collected by Prof. T. SHIRÔZU in his private survey of 1964 and 1965, by Drs. K. MORIMOTO and S. KIMOTO in 1965 as the members of the Japan-U.S. Co-operative Science Program. Further, I had been offered some specimens from Mr. R. KAWASAKI collected in 1964, from Dr. T. SHIRÔZU collected in 1961 by the members of the Expedition party of the Lepidopterological Society of Japan. And some additional specimens collected by the late Dr. T. KANO were freely studied by me through the kindness of Dr. Y. KUROSAWA of the National Science Museum, Tokyo.

In this paper, 19 new species and 5 new subspecies are described and all known species of this family from this region are listed, including 5 unrecorded species. The whole of each line next to each figure refers to a length of 0.1 mm.

Before going further, I wish to express my hearty thanks to Prof. TAKASHI SHIRÔZU, Mr. RIN-ICHI KAWASAKI, Drs. SYÔZIRÔ ASAHINA, KINTARÔ BABA, YOSHIHIKO KUROSAWA, AKIRA MUTUURA, TAKEHIKO NAKANE and MASAMI OGATA for their kindness and supplying the specimens or valuable helps on my study.

Acknowledgement is made of Drs. SHINSAKU KIMOTO and KATSURA MORIMOTO's support of a part of materials for this investigation through a grant from the Japan Society for the Promotion of Science as part of the Japan-U.S. Co-operative Science Program.

## Mordellini

### *Calycina nigroapicalis* sp. nov. (Fig. 1)

Rufous, elytra, mandibles, middle and hind tibiae and basal three joints of hind tarsi with blackish apices, eyes and antennae (basal four joints excepted) darker. Surface of body clothed with short, fulvous pubescence throughout.

Head moderately convex, finely punctate and pubescent, emarginate at the middle of posterior margin, with genae obtusely and indistinctly protrude in front of eyes, frons 2.4 times as broad as eye, which is small, circular, not emarginate anteriorly, bare, without pubescence, separated from posterior margin of head by broad, sub-parallel tempora as figured. Terminal joint of maxillary palpi broad-triangular, with upper face excavate, 2nd joint short. Antennae with 3rd and 4th joints slender, 5th to 10th serrate, each joint triangular, a little longer than broad, terminal joint sub-triangular, half longer than 10th.

Pronotum finely punctate and pubescent, broader than long (2.3:1.8 mm.), broadest point which is across near base, a little narrowed anteriorly, with a narrow median lobe in front and a broad median lobe at base, lateral margins nearly straight in profile and both angles rounded. Scutellum triangular, broader than long, rounded at apex, finely punctate and pubescent, except median longitudinal area and lateral margins. Elytra subparallel-sided at basal half, narrowed posteriorly, about 2.2 times as long as broad, with apex separately, somewhat angularly rounded. Surface of elytra finely, transversely rugose, depressed at scutellar area, elevated at humeri, with short carinae near base along scutellum.

Pygidium extremely short, slightly prolonged beyond anal sternite, with apex obtusely pointed in dorsal view. Middle tibiae shorter than tarsi. Penultimate tarsal joints of four anterior legs somewhat dilated, but not emarginate apically. Hind tibiae with two or three irregular rows of short, black hair on dorsal margin and a short apical comb. Outer terminal spur of hind tibiae a little longer than one-third of inner one. Body length: 6 mm. (excl. head & pygidium).

Holotype: ♀, Mt. Taikou, near Mt. Arisan, M. Formosa, 4 Jun. 1938, leg. S. NOMURA. (Type in my coll.).

Distribution: Formosa.

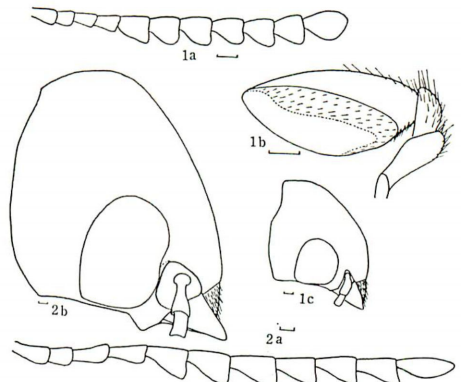
This species is nearly allied to *C. nigriceps* BLAIR from Malay Peninsula, but it differs from the latter in the form of 3rd antennal joint, the not divided penultimate joints of four anterior tarsi and the not projected hind angles of the head.

### *Calycina major* sp. nov. (Fig. 2)

Piceous, with eyes, antennae, mouth part, legs and abdomen red-brown to dark red-brown. Surface of body covered with fine, fulvous pubescence.

Head convex behind, somewhat depressed at the middle of frons, finely punctate and pubescent, emarginate at the middle of posterior margin, with genae in front of eyes protrude subrectangularly. Frons between eyes a little broader than twice breadth of eye, which is reniform, feebly emarginate anteriorly, bare, without pubescence, separated from hind margin of head by broad, subparallel tempora. Maxillary palpi lost in holotype. Antennae short, with 3rd and 4th joints slender, 5th to 10th serrate, each joint triangular, about half longer than respective breadth, last joint elongate-oval, one-third longer than preceding.

Pronotum broader than long (5.5:4.5 mm.), broadest point which is across at the middle, with a narrow median lobe in front and a broad lobe at the middle of



Figs. 1 & 2.

Fig. 1. *Calycina nigroapicalis* sp. nov.

1a. antenna (♀); 1b. maxillary palpus (♀);

1c. head in profile.

Fig. 2. *Calycina major* sp. nov.

2a. antenna (♀); 2b. head in profile.

at the middle, with a narrow median lobe in front and a broad lobe at the middle of

base, lateral margins feebly arched in profile and both angles rounded. Surface of pronotum finely punctate. Scutellum broad-triangular, rounded at apex, finely punctate. Elytra 2.6 times as long as broad, broadest point which is across at humeri, gradually narrowed posteriorly, with apex separately, acutely rounded. Surface of elytra transversely rugose on basal area, finely punctate on apical area, elevated at humeri, depressed at scutellar area, with short, oblique basal carinae along scutellum near base.

Pygidium short, triangular, about 1.3 times as long as anal sternite, with apex acute, about sixty degrees in dorsal view. All tibiae longer than respective tarsi. Penultimate joints of four anterior tarsi somewhat dilated, but not emarginate apically. Hind tibiae with two or three irregular rows of short, black hair on dorsal margin and a short apical comb. Outer terminal spur of hind tibiae three-fourths as long as inner one. Body length: 15 mm. (excl. head & pygidium).

Holotype: ♀, Formosa (without other data). (Type in my coll.).

Distribution: Formosa.

This species is separated from its closest ally, *C. sericeobrunnea* BLAIR of New Guinea by the smaller eyes and the transversely sculptured elytra.

### *Higehananomia palpalis* KÔNO

*Macrotomoxia castanea*: KÔNO (nec PIC), 1928, p. 174; KÔNO, 1928, p. 31; CHÛJÔ, 1935, p. 76.

*Higehananomia palpalis* KÔNO, 1935, p. 123; KÔNO, 1936, p. 12; NOMURA, 1963, p. 247; NOMURA, 1965, p. 145.

Hab.: Baibara (KÔNO, 1928), Hori (KÔNO, 1928), Hinokiyama (CHÛJÔ, 1935), Urai (8 Jul. 1961, leg. T. SHIRÔZU).

Distribution: Honshu, Iriomote Is. & Formosa.

### *Glipta (Stenoglipta) malaccana malaccana* PIC

*Glipta malaccana* PIC, 1911, p. 190; MIWA, 1931, p. 147; KÔNO, 1932, p. 153; CHÛJÔ, 1935, p. 77.

Hab.: Ranrun (8 Jul., ex KÔNO, 1932); Kankau, Kosempo, Shisha, Taihorin, Sokutsu (MIWA, 1931); Urai, Taihoku, Rengechi, Kagi, Taitô, Chipon, Eboshiyama (CHÛJÔ, 1935); Kururu (1 ♀, 4 Jul. 1939, leg. H. SAWADA); Nanzankei (1 ♂, 1 ♀, 8 & 26 Jun. 1965, leg. T. SHIRÔZU).

Distribution: Formosa & Malacca (Perak).

### *Glipta (Stenoglipta) malaccana kotoensis* subsp. nov.

This subspecies may be separated from the nominate form by the colouration of pubescence as follows: Pubescence on the head, pronotum and base of elytra paler, one of the scutellum silvery white. Both annular maculations near the scutellum on the base of elytra interrupted in front. Body length: 7.2-9.5 mm. (excl. head & pygidium).

Holotype: ♂, Kôtôsho (Botel-Tobago Is.), 1 May 1939, leg. M. SATÔ; allotype: ♀, paratypes: 1 ♀, 15 Apr.-5 May 1941, leg. A. TANAKA; 2 ♀, 4 Sep. 1935, leg. S. HIRAYAMA. (Types in my coll.).

Distribution: Formosa (Botel-Tobago Is.).

*Gliða (Macrogliða) shibatai* NAKANE

*Gliða (Macrogliða) shibatai* NAKANE, 1960, Ent. Rev. Japan, XII, 1, p. 17; NOMURA, 1963, p. 247; NOMURA, 1965, p. 145.

Hab.: Rimogan-Magan (1 ♀, 19 Jul. 1961, leg. T. SHIRÔZU).

Distribution: Honshu, Yakushima (new record, 12 Aug. 1965, leg. H. KONISHI), Amami-Ôshima & Formosa.

*Gliða (Macrogliða) shirozui takashii* subsp. nov. (Fig. 3)

This subspecies differs from the nominate form in the following points:—

1. Body much smaller (6.6 mm. instead 10–12 mm. in the nominate form); 2. paler pubescence on dorsal surface more yellowish; 3. maculations of elytra broader; 4. front legs and middle femora fulvous, middle tibiae and tarsi dark red-brown, whereas in the nominate form the only front femora fulvous.

Holotype: ♂, Honbukei, 26 May 1965, leg. T. SHIRÔZU. (Type in coll. of Entomological Laboratory, Kyushu University).

Distribution: Formosa.

*Gliða (Macrogliða) pici* ERMISCH

*Gliða formosana* PIC (part), 1911, p. 190; KÔNO 1928, p. 32; KÔNO, 1936, p. 17; MIWA, 1931, p. 174; MITONO, 1932, p. 209; CHÛJÔ, 1935, p. 76; NAKANE & NOMURA, 1950, p. 1.

*Gliða pici* ERMISCH, 1940, p. 162; NOMURA, 1963, p. 247.

*Gliða (Macrogliða) pici*: NAKANE, 1950, Ent. Rev. Japan, VII, 1, p. 17.

Hab.: Tainan (Fainan, ex PIC, 1911); Ranrun (KÔNO, 1928); Kankau (MIWA, 1931); Karapai (MITONO, 1932); Chikutô, Kôshun, Kwarenkô, Taitô, Mt. Taiheizan, Hinokiyama (CHÛJÔ, 1935); Mt. Taiheizan (2 ♀, 29 Jun. 1941, leg. T. SATÔ); Honbukei (3 ♂, 1 ♀, 26 May 1965, leg. T. SHIRÔZU); Nanzankei (1 ♀, 20 Jun. 1965, leg. T. SHIRÔZU).

Distribution: Honshu, Shikoku, Kyushu, Yakushima & Formosa.

*Gliða (Macrogliða) sauteri sauteri* PIC

*Gliða sauteri* PIC, 1911, p. 189; KÔNO, 1928, p. 31; MIWA, 1931, p. 174; NOMURA, 1963, p. 247.

*Gliða (Macrogliða) sauteri*: NAKANE, 1950, Ent. Rev. Japan, VII, 1, p. 17.

Hab.: Taihorinsho (PIC, 1911); Urai (KÔNO, 1928); Giran, Kôshun (MIWA, 1931); Rokkishô (1 ♂, 14 May 1941); Baibara (1 ♂, 25 Apr. 1929, leg. K. SATÔ); Honbukei (1 ♂, 26 May 1965, leg. T. SHIRÔZU).

Distribution: Yakushima, Amami-Ôshima & Formosa.

*Gliða (Macrogliða) alboscuteolata* KÔNO

*Gliða alboscuteolata* KÔNO, 1934, p. 116; KÔNO, 1936, p. 20.

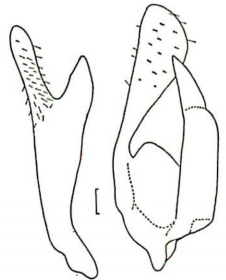


Fig. 3.

Male genitalia of *Gliða (Macrogliða) shirozui takashii* subsp. nov.

Hab.: Kankau (May, ex KÔNO, 1934); Honbukei (15♂, 2♀, 26 May, 4 & 20 Jun. 1965, leg. T. SHIRÔZU).

Distribution: Formosa.

*Glipa (Macroglipa) obscuripennis* PIC

*Glipa formosana* var. *obscuripennis* PIC, 1911, p. 191; MIWA, 1931, p. 174.

*Glipa obscuripennis*: ERMISCH, 1940, p. 163.

Hab.: Taihorin (PIC, 1911); Kankau (MIWA, 1931); Honbukei (1♂, 26 May 1965, leg. T. SHIRÔZU).

Distribution: Formosa.

*Glipa (Macroglipa) formosana* PIC

*Glipa formosana* PIC (part), 1911, p. 190; ERMISCH, 1940, p. 163; NAKANE, 1950, Trans. Kansai Ent. Soc., XV, 2, p. 21; NOMURA, 1963, p. 247.

*Glipa satoi* NAKANE et NOMURA, 1950, p. 1.

Hab.: Tainan (Fainan, ex PIC, 1911); Bonbon (1♂, 26 Jun. 1941, leg. T. SATÔ).

Distribution: Amami-Ôshima, Okinawa Is. & Formosa.

*Tomoxia formosana* CHÛJÔ

*Tomoxia formosana* CHÛJÔ, 1935, p. 73; KÔNO, 1936, p. 23; NOMURA, 1963, p. 248.

Hab.: Rimogan (12 May, ex CHÛJÔ, 1935).

Distribution: Amami-Ôshima & Formosa.

*Mordellaria hananoi* (NAKANE et NOMURA)

*Mordella hananoi* NAKANE et NOMURA, 1950, p. 12.

*Mordellaria hananoi*: NAKANE, 1957, Shin Konchû, X, 3, p. 55; NOMURA, 1963, p. 249.

Hab.: Mt. Taiheizan (29 Jun. 1941, leg. T. SATÔ).

Distribution: Honshu, Shikoku & Formosa.

*Mordellaria (?) kanoi* (KÔNO)

*Mordella kanoi* KÔNO, 1932, p. 153; KÔNO, 1936, p. 34.

Hab.: Rahara (23 Apr., ex KÔNO, 1932).

Distribution: Formosa.

*Mordellaria latior* sp. nov. (Fig. 4)

Black, with front femora, basal four antennal joints, basal three joints of maxillary palpi fulvous, eyes, front tibiae, parts of middle femora and hind tibial spurs rufous. Head, pronotum and scutellum covered with fulvous pubescence, except fuscous one of three spots on basal half of pronotum, elytra clothed with fuscous pubescence, except fulvous one on humeral oblique markings, sutural stripe and a fascia on apical third. Ventral surface and legs clothed with fulvous pubescence, except fuscous one on latero-apical areas of each abdominal sternite and apical half of pygidium.

Head moderately convex, minutely punctate, with eyes oval, finely pubescent. Terminal joint of maxillary palpi broad-triangular, with inner margin shorter than

outer and apical ones, inner angle subrectangular. Antennae with 3rd and 4th joints slender, 5th to 10th somewhat serrate, each joint longer than 1.5 times of its breadth, last joint elongate-oval, one-third longer than 10th.

Pronotum broader than long (1.8:1.3 mm.), finely punctate, with lateral margins feebly arched in profile, both angles rounded. Scutellum semicircular, twice as broad as its length, finely punctate. Elytra finely punctate, 1.7 times as long as broad, roundly narrowed from the middle to apex, which is separately rounded.

Pygidium twice length of anal sternite, somewhat truncate at apex. Front and middle tibiae longer than respective tarsi. Penultimate tarsal joints of four anterior legs bilobed. Hind tibiae with dorsal carina and apical comb. Outer terminal spur of hind tibiae as long as half of inner one. Body length: 3.4-3.9 mm. (excl. head & pygidium).

Holotype: ♀, paratypes: 2 ♀, Nanzankei, Formosa, 8 & 20 Jun. 1965, leg. T. SHIRÔZU; 1 ♀, Miyonoura, Yakushima, Kyushu, 31 Jul. 1966, leg. T. KOBAYASHI. (Holotype in coll. of Ent. Lab., Kyushu University).

Distribution: Kyushu (Yakushima) & Formosa.

This species is nearly allied to *M. humeralis* NOMURA from Amami-Ôshima, but it differs from the latter in the longer antennae, the shorter inner margin of the terminal joint of the maxillary palpi and the lack of rufous humeral spots on the elytra.

### *Hoshihananomia kirai* NAKANE et NOMURA

*Hoshihananomia kirai* NAKANE et NOMURA, 1950, p. 6; NOMURA, 1963, p. 248.

Hab.: Formosa (18 Jul. 1941, leg. A. KIRA); Nanzankei (1 ♂, 1 ♀, 21 May 1965, leg. T. SHIRÔZU).

Distribution: Ishigaki Is. & Formosa.

### *Hoshihananomia composita composita* (WALKER)

*Mordella composita* WALKER, 1858, Ann. Mag. Nat. Hist., (3), II, p. 286; KANO, 1930, p. 52; CHÛJÔ, 1935, p. 79.

*Hoshihananomia composita*: KÔNO, 1935, p. 125; KÔNO, 1936, p. 29.

*Mordella composita* var. *innotata* PIC, 1926, p. 67.

Hab.: Botansha (KANO, 1930); Kôshun (KANO, 1930); Taitô (CHÛJÔ, 1935); Hoku-zankei (1 ♀, 28 May 1938, leg. K. SAI); Hori (1 ♀, 12 Jul. 1941, leg. A. KIRA); Baibara (4 ♂, 3 ♀, 1964, leg. T. SHIRÔZU).

Distribution: Formosa, Philippine, India & Ceylon.

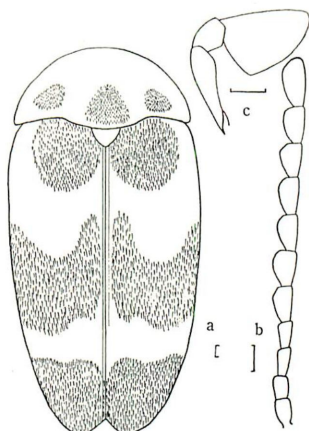


Fig. 4.

*Mordellaria latior* sp. nov.

a. body in dorsal view; b. antenna (♀);  
c. maxillary palpus (♀).

*Hoshihananomia auromaculata auromaculata* (CHÛJÔ)

*Mordella auromaculata* CHÛJÔ, 1935, p. 72.

*Hoshihananomia hananomi* KÔNO (part), 1936, p. 29.

*Hoshihananomia auromaculata auromaculata*: NOMURA, 1962, Tôhō-Gakuhō, No. 12, p. 40; NOMURA, 1965, p. 145.

Hab.: Chokutan (17 May, ex CHÛJÔ, 1935); Nanzankei (1 ♀, 24 Jun. 1961, leg. A. MUTUURA); Hokuzankei (1 ♀, 25 Jun. 1961, leg. T. SHIRÔZU); Musha (11 exs.); Hori (17 exs., 1964, leg. R. KAWASAKI); Kusha (6 Jul. 1926, leg. T. KANO); Baibara (151 exs., 1964, leg. T. SHIRÔZU).

Distribution: Formosa.

*Hoshihananomia katoi* NAKANE et NOMURA

*Hoshihananomia* sp., NAKANE, 1957, Shin Konchû, X, 3, p. 55.

*Hoshihananomia katoi* NAKANE et NOMURA, 1957, Ent. Rev. Japan, VIII, 1, p. 3; NOMURA, 1963, p. 248.

Hab.: Mt. Taiheizan (NAKANE, 1957); Hori (1 ♂, 1 ♀, 1964, leg. R. KAWASAKI); Musha (2 ♀, Jul. 1958); Baibara (7 ♂, 4 ♀, 1964, leg. T. SHIRÔZU).

Distribution: Shikoku & Formosa.

*Hoshihananomia formosana* NAKANE et NOMURA

*Hoshihananomia formosana* NAKANE et NOMURA, 1950, p. 9.

*Hoshihananomia formosana* ab. *rara* NAKANE et NOMURA, 1950, p. 10.

Hab.: Bonbon (1 ♀, 25 Jun. 1941, leg. A. KIRA); Mt. Rarasan (1 ♀, Jun., leg. S. HIRAYAMA).

Distribution: Formosa.

*Hoshihananomia minuscula* sp. nov. (Fig. 5)

Black, with basal four antennal joints and mouth part dark red-brown, surface bears fuscous pubescence with violet tint and decorated with whitish pubescence on the following parts: Lateral and basal margins of pronotum, a fascia and two short stripes on the middle of pronotum, four spots on each elytron, episternum, median area of metasternum, marginal part of hind coxae, middle parts of basal three abdominal sternites, latero-basal areas of each sternite and basal margin of pygidium. Each elytron with first whitish spot oval, situated near base, more approached to suture than lateral margin, second one oblong, contiguous obliquely to lateral margin, third one oval, near suture before the middle, fourth one oblong, not touched suture and lateral margin at apical third. In male, whitish spots on elytra generally smaller than in female and maculations on pronotum obscure, except two oblong spots along the middle of basal margin.

Head moderately convex, minutely punctate, with eyes oval, tempora narrow. Terminal joint of maxillary palpi broad-triangular, with inner margin shorter than apical one and inner angle obtuse. Antennae with 3rd and 4th joints slender, 5th to 10th serrate, each joint gradually decreasing in length, 5th as long as 1.7 times, 10th 1.4 times of respective breadth, last joint elongate oval, one-third longer than 10th and subequal in length with 5th.

Pronotum finely, rugosely punctate, broader than long (♂, 1.8:1.5 mm.; ♀, 1.9:1.5

mm.), with lateral margins nearly straight in profile, front and hind angles rounded. Scutellum broad-triangular, rounded at apex. Elytra more (♂) or less (♀) twice as long as broad, gradually narrowed posteriorly from humeri in male, from basal third in female, with apex separately, somewhat angularly rounded.

Pygidium 2.5 times as long as anal sternite in female, rather slender, twice length of anal sternite in male, truncated at apex, with a short dorsal and two lateral carinae at the middle. Front and middle tibiae a little longer than respective tarsi. Outer terminal spur of hind tibiae about two-thirds length of inner one. Body length: 5-6.5 mm. (excl. head & pygidium).

Holotype: ♂, paratype: 1 ♂, Hori, 1964, leg. R. KAWASAKI; allotype: ♀, paratypes: 8 ♂, 8 ♀, Baibara, 1964, leg. T. SHIRÔZU; 1 ♀, Musha, 9 Jun. 1938, leg. K. SAI. (Holotype in my coll.).

Distribution: Formosa.

This new species differs from its closest ally, *H. formosana* NAKANE et NOMURA, in the more slender pygidium, the narrower antennae, the longer outer terminal spur of hind legs and the different mode of elytral maculations, especially oblong, not crescent fourth spot. From *H. katoi* NAKANE et NOMURA, this species is easily separated in the smaller body, lack of the basal markings along basal margin of elytra near the scutellum and having two short lateral carinae at the middle of pygidium.

### *Variimorda truncatopyga* (PIC) comb. nov.

*Mordella truncatopyga* PIC, 1938, L'Echange, p. 16.

*Mordella* (*Variimorda*) *truncatopyga*: NOMURA, 1958, p. 6.

*Mordella taiwana* NAKANE et NOMURA, 1950, p. 14.

Hab.: Mt. Taiheizan (29 Jun. 1941, leg. T. SATÔ).

Distribution: Formosa & China (Tsiliyu).

### *Mordella niveoscutellata* NAKANE et NOMURA

*Mordella niveoscutellata* NAKANE et NOMURA, 1950, p. 15; NOMURA, 1958, p. 7; NOMURA, 1963, p. 249.

Hab.: Mt. Arisan (6-10 Jun.); Musha (12 Jun., Jul.); Hori; Yanminshan (4 exs., 24 Jun. 1965, leg. S. KIMOTO); Nanzankei (8 exs., 28 Apr., 6 & 21 May 1965, leg. T. SHIRÔZU); Baikei (1 ex., 12 May 1965, leg. T. SHIRÔZU); Miharashi (1 ex., 3 May 1965, leg. T. SHIRÔZU); Baibara (178 exs., 1964, leg. T. SHIRÔZU).

Distribution: Kyushu, Yakushima, Kuchino-erabu-jima, Amami-Ôshima, Okinawa Is. & Formosa.

### *Mordella ochrotricha* NOMURA

*Mordella* (s. str.) *ochrotricha* NOMURA, 1958, p. 8.

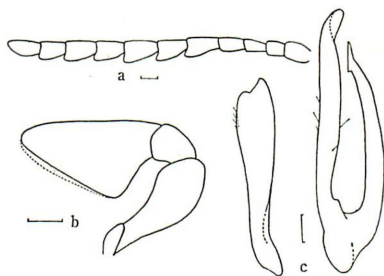


Fig. 5.

*Hoshihanonomia minuscula* sp. nov.

a. antenna (♂); b. maxillary palpus (♂);  
c. male genitalia.



Hab.: Jujiro (1♀, 6 Jun. 1938, leg. S. NOMURA); Hori (1♂, 2♀, 1964, leg. R. KAWASAKI); Baibara (31 exs., 1964, leg. T. SHIRÔZU).

Distribution: Formosa.

The male of this species differs from the female in the fuscous pubescence on the upper surface, except pale yellow one on the scutellum, the feebly curved pygidium, the incurved front tibiae, the longer antennae and the dilated 2nd joint of the maxillary palpi.

### *Mordella truncatoptera* NOMURA

*Mordella* (s. str.) *truncatoptera* NOMURA, 1958, p. 8; NOMURA, 1963, p. 249.

Hab.: Urai (21 Jun. 1941, leg. A. KIRA); Hori (1964, leg. R. KAWASAKI); Yanminshan (1♂, 24 Jun. 1965, leg. S. KIMOTO); Baibara (1♂, 1964, leg. T. SHIRÔZU); Miharashi (1♂, 3 May 1965, leg. T. SHIRÔZU).

Distribution: Honshu, Shikoku, Kyushu & Formosa (new record).

### *Mordella yami* sp. nov. (Fig. 6)

Black, with maxillary palpi, basal four antennal joints and front femora fuscous. Surface of body covered with fuscous pubescence, except yellowish one on scutellum, whitish one on episternum and latero-basal areas of basal three abdominal sternites and of hind coxae.

Head moderately convex, minutely punctate, with eyes oval, microscopically pubescent. Terminal joint of maxillary palpi broad-triangular, with inner margin shorter than apical one and inner angle somewhat obtuse. In male, 2nd joint of maxillary palpi a little broader than in female. Antennae with 3rd and 4th joints slender, 5th to 10th serrate, each joint triangular, rounded at inner margin, as long as broad in male, shorter in female, last joint elongate-oval, twice length of 10th.

Pronotum finely punctate, broader than long (1.9:1.6 mm.), with lateral margins nearly straight in profile, front and hind angles rounded. Scutellum finely punctate, broad-triangular, rounded at apex. Elytra finely punctate, twice as long as broad, with apex separately rounded, but somewhat obliquely truncated.

Pygidium rather slender, gradually narrowed to apex, three times length of anal sternite, nearly straight in female, feebly curved downwards in male, with apex somewhat truncated. Front tibiae longer than tarsi, incurved in male, nearly straight in female. Penultimate joints of front tarsi longer than its breadth and emarginate at apex. Middle tibiae shorter than middle tarsi. Outer terminal spur of hind tibiae two-thirds length of inner one. Male genitalia as figured. Body length: 4-5.3 mm.

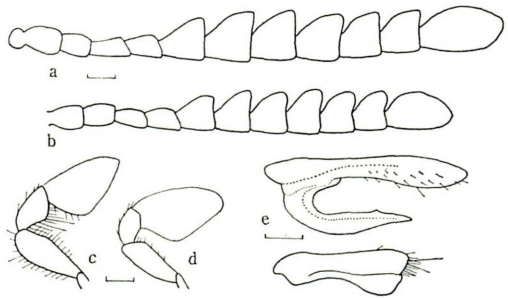


Fig. 6.

*Mordella yami* sp. nov.

a. antenna (♂); b. ditto (♀); c. maxillary palpus (♂);  
d. ditto (♀); e. male genitalia.

(excl. head & pygidium).

Holotype: ♂, allotype: ♀, paratypes: 8♂, 6♀, Hori, 1964, leg. R. KAWASAKI; 43♂, 38♀, Baibara, 1964, leg. T. SHIRÔZU; 1♂, 2 Jun. 1965, leg. T. SHIRÔZU; 1♂, 1♀, Nanzankei, 6 May 1965, leg. T. SHIRÔZU; 1♀, Yanminshan, 24 Jun. 1965, leg. S. KIMOTO. (Holotype in my coll.).

Distribution: Formosa.

This species is nearly related to *M. onaga* NOMURA from Japan, but it may be separated from the latter in the longer last antennal joint, the stouter pygidium, the whitish pubescence on the episternum and latero-basal areas of basal three abdominal sternites.

*Mordella shirozui* sp. nov. (Fig. 7)

Black, with front femora and basal four antennal joints nigro-fuscous. Surface of body covered with fuscous pubescence, except whitish one on episternum and latero-basal areas of basal four abdominal sternites.

Head moderately convex, minutely punctate, with eyes oval. Terminal joint of maxillary palpi broad-triangular, with inner angle obtuse, inner margin as long as apical one in male, shorter in female, 2nd joint somewhat dilated in male, slender in female. Antennae with 3rd and 4th joints slender, subequal in length, 5th to 10th serrate, each joint triangular, rounded at inner margin, as long as broad, last joint elongate, subtriangular, shorter than twice length of preceding.

Pronotum broader than long (1.6:1.2 mm.), finely, transversim-rugosely punctate, with lateral margins nearly straight in profile, both angles rounded. Scutellum broad-triangular, rounded at apex. Elytra twice as long as broad in male, about 1.7 times in female, transversim-rugosely punctate, with apex separately rounded, but somewhat obliquely truncated.

Pygidium stout, gradually narrowed posteriorly, truncated at apex, in male twice length of anal sternite, feebly curved downwards, in female longer than 2.5 times of anal sternite and nearly straight. Front tibiae incurved in male, nearly straight in female. Penultimate tarsal joints of front legs emarginate at apex. Outer terminal spur of hind tibiae about two-thirds length of inner one. Male genitalia as figured. Body length: 4-5.2 mm. (excl. head & pygidium).

Holotype: ♂, allotype: ♀, paratypes: 2♂, 1♀, Nanzankei, 6 & 21 May 1965, leg. T. SHIRÔZU; 1♀, Baikei, 16 May 1965, leg. T. SHIRÔZU; 12♂, 2♀, Baibara, 1964, leg. T. SHIRÔZU; 1♀, Urai, 5 Jul. 1941, leg. A. KIRA. (Holotype in coll. of Ent. Lab., Kyushu University).

Distribution: Formosa.

This species differs from its closest ally, *M. oxyptera* NOMURA from Japan, in the blackish maxillary palpi and the different structure of the male genitalia.

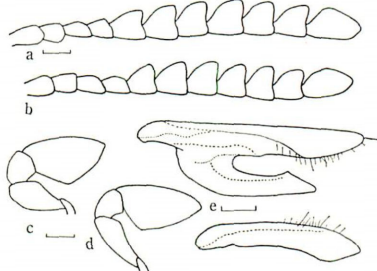


Fig. 7.

*Mordella shirozui* sp. nov.

a. antenna (♂); b. ditto (♀); c. maxillary palpus (♂); d. ditto (♀); e. male genitalia.

*Mordella inouei* NOMURA

*Mordella* (s. str.) *inouei* NOMURA, 1958, p. 12.

Hab.: Mt. Arisan (1 ♂, 10 Jun. 1938, leg. H. INOUE); Mt. Taiheizan (1 ♀, 23 Jun. 1938, leg. H. INOUE).

Distribution: Formosa.

*Mordella tenuicauda* NOMURA

*Mordella* (s. str.) *tenuicauda* NOMURA, 1958, p. 15.

Hab.: Mt. Rarasan (2 ♂, 20 Jun. 1938, leg. S. NOMURA).

Distribution: Formosa.

*Mordella* (?) *mixta* FABRICIUS

*Mordella mixta* FABRICIUS, 1801, Syst. Eleuth., II, p. 122; KANO, 1931, p. 181.

Hab.: Botel-Tobago Is. (KANO, 1931).

Distribution: Formosa (Botel-Tobago Is.), Nova Cambria & Moluccas.

**Mordellistenini***Mordellistena* (s. str.) *pumila* (GYLLENHAL)

*Mordella pumila* GYLLENHAL, 1810, Ins. Suec., II, p. 605.

*Mordellistena pumila*: COSTA, 1854, Fauna Regni Napoli, Mord., p. 16; ERMISCH, 1956, in Horion, Faunistik der mitteleuropäischen Käfer, V, p. 289.

Hab.: Musha (1 ♂, 28 Apr. 1927, leg. T. KANO); Baibara (1 ♀, 1964, leg. T. SHIRÔZU).

Distribution: Europe, Caucasus, Syria, Siberia, Kamchatka, Korea & Formosa (new record).

*Mordellistena* (s. str.) *miyamotoi* NAKANE

*Mordellistena* (s. str.) *miyamotoi* NAKANE, 1956, Bull. Osaka Mun. Mus. Nat. Hist., No. 9, p. 3; NOMURA, 1963, p. 250.

Hab.: Naka spa (22 Sep. 1962, leg. K. BABA).

Distribution: Nakanoshima, Takarajima, Iriomote Is., Yonaguni Is. & Formosa.

*Mordellistena* (s. str.) *porphyria* NOMURA

*Mordellistena porphyria* NOMURA, 1951, p. 55.

Hab.: Mt. Rarasan (1 ♂, 9 Aug. 1941, leg. H. HASEGAWA); Mt. Taiheizan (1 ♂, 24 Jun. 1938, leg. H. INOUE); Yanminshan (2 ♂, 1 ♀, 24 Jun. 1965, leg. S. KIMOTO); Baikei (2 exs., 12 May 1965, leg. T. SHIRÔZU); Miharashi (1 ex., 3 May 1965, leg. T. SHIRÔZU); Baibara (15 exs., 1964, leg. T. SHIRÔZU).

Distribution: Formosa.

*Mordellina* (*Pseudomordellistena*) *gina* sp. nov. (Fig. 8)

Piceous, with head and pronotum more blackish, mouth part, basal three antennal joints, front legs and hind tibial spurs fulvous, four posterior tibiae and tarsi fuscous,

except blackish combs and apex of each joint. Surface of body bears fuscous pubescence with yellowish lustre under some light except dark violet lustrous one on apical area of elytra and fulvous one on episternum, metasternum, metacoxae and latero-basal areas of basal three abdominal sternites.

Head moderately convex, minutely punctate, with eyes somewhat large, subrhombic in male, ovate in female. Maxillary palpi with 2nd joint somewhat dilated in both sexes, last joint triangular, its inner margin shorter than apical one. Antennae with 3rd joint the smallest, 4th to 10th somewhat serrate, each joint 1.4 times as long as broad, last joint elongate-oval, half longer than 10th in male, one-third longer than 10th in female.

Pronotum finely punctate, as long as broad, with broadest point which is across at basal third, lateral margins sinuate at basal half in profile and hind angles somewhat sharply pointed. Scutellum broad-triangular, rounded at apex. Elytra 2.3 times as long as broad, with apex separately, somewhat sharply rounded.

Pygidium slender, three times length of anal sternite, distinctly curved downwards in male, feebly in female. Penultimate tarsal joints of four anterior legs simple. Front trochanters and front femora each with a blackish bristle at anterior margin in male, without it in female. Front tibiae feebly incurved in both sexes. Combs of hind legs strongly oblique, 3; 3, 2, 0. Basal comb of hind tibiae the longest, reaching to median axis of tibial outer surface. Outer terminal spur of hind tibiae shorter than half length of inner one. Male genitalia as figured. Body length: 2.8–3.5 mm. (excl. head & pygidium).

Holotype: ♂, paratypes: 3♂, Baibara, 1964, leg. T. SHIRÔZU; allotype: ♀, Yanminshan, 24 Jun. 1965, leg. S. KIMOTO. (Holotype in coll. of Ent. Lab., Kyushu University).

Distribution: Formosa.

This species is somewhat nearly allied to *M. nigrofusca* NOMURA from Japan, but it differs from the latter in the smaller body, the longer combs of hind tibiae, the shorter inner margin of the terminal joint of maxillary palpi and the different form of the male genitalia.

### *Mordellina (Pseudomordellistena) rufohumeralis* sp. nov. (Fig. 9)

Body black, with rufous to fulvous parts as follows: A round basal spot on each elytron, median area of metasternum, hind coxae, anal sternite, pygidium, legs (blackish combs excepted), mouth part and basal three antennal joints. Surface of body covered with fuscous pubescence, except fulvous one on basal spots of elytra and ventral surface.

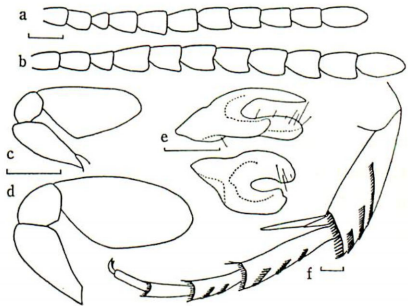


Fig. 8.

*Mordellina (Pseudomordellistena) gina* sp. nov.

a. antenna (♂); b. ditto (♀); c. maxillary palpus (♂); d. ditto (♀); e. male genitalia; f. hind leg.

Head moderately convex, minutely punctate, with eyes oval. Maxillary palpi with terminal joint elongate-triangular, its apical margin the shortest, 2nd joint somewhat dilated in male. Antennae with 3rd joint the shortest, 4th to 10th joints feebly serrate, each joint elongate, 1.8-1.9 times as long as respective breadth, last joint elongate-elliptical, one-third longer than 10th.

Pronotum a little broader than long (1.2:1.1 mm.), with lateral margins sinuated at basal half in profile, hind angles somewhat sharply acute. Scutellum broad-triangular, rounded at apex. Elytra subparallel-sided at basal half, attenuate posteriorly, 2.5 times as long as broad, with apex separately rounded.

Pygidium slender, three times as long as anal sternite and feebly curved downwards in male. Penultimate tarsal joints of four anterior legs simple, not dilated.

In male, front trochanters and front femora each with a blackish bristle at anterior margin, front tibiae incurved, with blackish hair on dorsal surface of basal half. Combs of hind legs strongly oblique, 3; 3, 2, 0. Basal comb of hind tibiae the longest, reaching to median axis of tibial outer surface. Outer terminal spur of hind tibiae one-third length of inner one. Body length: 4-4.6 mm. (excl. head & pygidium).

Holotype: ♂, paratype: 1 ♂, Baibara, 1964, leg. T. SHIRÔZU. (Holotype in coll. of Ent. Lab., Kyushu University).

Distribution: Formosa.

This species is somewhat allied to *M. longula* (Kôno), but it differs from the latter in the blackish pronotum, the rufous pygidium, the round basal spots on the elytra and the different form of the maxillary palpi and of the male genitalia.

### *Mordellina (Pseudomordellistena) paiwana* sp. nov. (Fig. 10)

Black, with apical half of pygidium rufo-piceous, head sometimes piceous and fulvous parts as follows: Pronotum, scutellum, prosternum, humeral stripes of elytra, clypeus, mouth part, basal antennal joints and legs (large part of hind femora and combs of hind legs excepted). Surface of body bears fuscous pubescence with yellow lustre in some light.

Eyes oval, very slightly emarginate at antero-dorsal margin in male. Maxillary palpi with 2nd joint dilated in male, slender in female, terminal joint broad-triangular, its apical margin as long as inner one in male, shorter than inner one in female. Antennae with 3rd joint the shortest, 4th to 10th somewhat serrate, each joint subtriangular, 1.5 times as long as respective breadth, last joint elongate, one-third longer than 10th.

Pronotum a little broader than long (1.25:1.17 mm.), with lateral margins sinuate

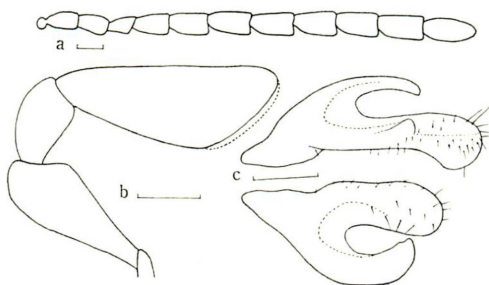


Fig. 9.

*Mordellina (Pseudomordellistena) rufohumeralis* sp. nov.  
a. antenna (♂); b. maxillary palpus (♂); c. male genitalia.

at basal half in profile, hind angles sharply pointed. Scutellum broad-triangular, rounded at apex. Elytra 2.3 times as long as broad, with apex separately rounded.

Pygidium slender, three times length of anal sternite, feebly curved downwards in male, pointed at apex. Front trochanters and front femora each with a blackish bristle at anterior margin in male, without it in female. Penultimate tarsal joints of four anterior legs simple, not dilated. Combs of hind legs strongly oblique, 3; 3, 2, 0. Basal comb of hind tibiae the longest, fully reaching to median axis of tibial outer surface. Outer terminal spur of hind tibiae two-fifths length of inner one. Male genitalia as figured. Body length: 3-3.6 mm. (excl. head & pygidium).

Holotype: ♂, paratypes: 3♂, Yanminshan, 24 Jun. 1965, leg. S. KIMOTO; allotype: ♀, paratypes: 1♀, Baibara, 1964, leg. T. SHIRÔZU; 1♂, Baikei, 13 May 1965, leg. T. SHIRÔZU. (Holotype in coll. of National Sci. Mus., Tokyo).

Distribution: Formosa.

This species is nearly related to *M. yamamotoi* NOMURA, but it differs from the latter in the blackish head and elytra, the slender pygidium and the different form of the maxillary palpi and of the male genitalia.

*Mordellina (Pseudomordellistena) callichroa ami* subsp. nov. (Fig. 11)

This subspecies differs from the nominate subspecies in the form of the maxillary palpi. Terminal joint of maxillary palpi in male elongate-triangular, with apical margin a little shorter than inner one, in female broad-triangular, with apical and inner margin subequal in length. Antennae, maxillary palpi and male genitalia as figured. Body length: 3.8-4.2 mm. (excl. head & pygidium).

Holotype: ♂, allotype: ♀, Hori, 1964, leg. R. KAWASAKI; paratypes: 1♂, Baibara, 1964, leg. T. SHIRÔZU; 1♂, Yanminshan, 24 Jun. 1965, leg. S. KIMOTO. (Holotype in my coll.).

Distribution: Formosa.

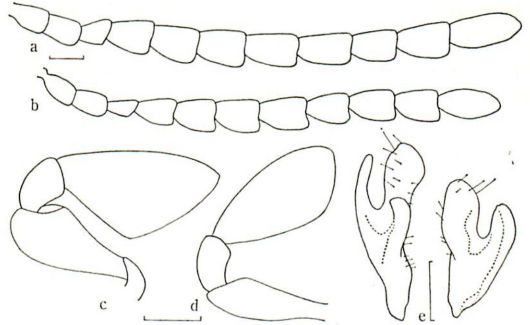


Fig. 10.

*Mordellina (Pseudomordellistena) paiwana* sp. nov.  
a. antenna (♂); b. ditto (♀); c. maxillary palpus (♂);  
d. ditto (♀); e. male genitalia.

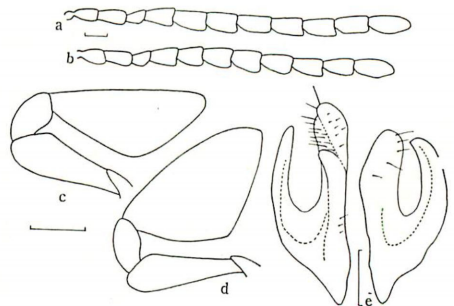


Fig. 11.

*Mordellina (Pseudomordellistena) callichroa ami*  
subsp. nov.  
a. antenna (♂); b. ditto (♀); c. maxillary palpus  
(♂); d. ditto (♀); e. male genitalia.

*Mordellina (Pseudomordellistena) tsutsui* (NAKANE)

*Mordellistena* (s. str.) *tsutsui* NAKANE, 1956, Bull. Osaka Mun. Mus. Nat. Hist., No. 9, p. 4.

*Pseudomordellistena tsutsui*: NOMURA, 1963, p. 251.

*Mordellina (Pseudomordellistena) tsutsui*: NOMURA, 1966, Ent. Rev. Japan, XVIII, 2, p. 49.

Hab.: Mt. Tattaka (1♂, Jun. 1965, leg. T. SHIRÔZU).

Distribution: Nakanoshima, Amami-Ôshima & Formosa (new record).

*Mordellina (Pseudomordellistena) pilosovittata* (NAKANE)

*Mordellistena* (s. str.) *pilosovittata* NAKANE, 1956, Bull. Osaka Mun. Mus. Nat. Hist., No. 9, p. 5.

*Mordellistena (Pseudomordellistena) pilosovittata*: NOMURA et KATÔ, 1957, p. 84.

*Pseudomordellistena pilosovittata*: NOMURA, 1963, p. 251.

*Mordellina (Pseudomordellistena) pilosovittata*: NOMURA, 1966, Ent. Rev. Japan, XVIII, 2, p. 49.

Hab.: Nanzankei (1♂, 27 May 1965, leg. T. SHIRÔZU); Honbukei (1♂, 1♀, 27 Apr. & 2 May 1965, leg. T. SHIRÔZU); Baibara (2♂, 4♀, 1964, leg. T. SHIRÔZU).

Distribution: Yakushima, Tanegashima, Nakanoshima & Formosa (new record).

*Mordellina (Pseudomordellistena) curteapicalis* (PIC) comb. nov.

*Mordellistena curteapicalis* PIC, 1926, p. 67; KÔNO, 1936, p. 48.

*Mordellistena (Pseudomordellistena) curteapicalis*: NOMURA et KATÔ, 1957, p. 84.

Hab.: Hori (26 May 1941, leg. T. SATÔ); Kuraru (25 May 1938, leg. S. NOMURA).

Distribution: Formosa.

*Mordellina (Pseudomordellistena) kaguyahime* (NOMURA et KATÔ)  
comb. nov.

*Mordellistena palliata* KÔNO (part), 1936, p. 44.

*Mordellistena (Pseudomordellistena) kaguyahime* NOMURA et KATÔ, 1957, p. 85.

*Pseudomordellistena kaguyahime*: NOMURA, 1963, p. 252.

Hab.: Hori (♀, 26 May 1941); Rokkiri (1♂, 14 May 1941); Nanzankei (1♂, 30 May 1965, leg. T. SHIRÔZU); Baibara (2♂, 3♀, 1964, leg. T. SHIRÔZU).

Distribution: Hokkaido, Honshu, Shikoku, Kyushu, Amami-Ôshima (new record, 1♀, Ikari, 4 Jun. 1960, leg. T. SHIBATA) & Formosa (new record).

*Mordellina (Pseudomordellistena) amamiensis* (NOMURA)

*Mordellistena amamiensis* NOMURA, 1951, p. 60.

*Mordellistena (Pseudomordellistena) amamiensis*: NOMURA et KATÔ, 1957, p. 87.

*Pseudomordellistena amamiensis*: NOMURA, 1963, p. 252.

*Mordellina (Pseudomordellistena) amamiensis*: NOMURA, 1966, Ent. Rev. Japan, XVIII, 2, p. 49.

Hab.: Kuraru (1♀, 9 May 1941, leg. Y. YANO); Rokkiri (2♂, 1♀, 14 Jul. 1941, leg. Y. YANO); Baikei (13 exs., 12-16 May 1965, leg. T. SHIRÔZU); Honbukei (1♀, 2 May 1965, leg. T. SHIRÔZU); Nanzankei (1♀, 30 Apr. 1965, leg. T. SHIRÔZU); Yanminshan

(22 exs., 24 Jun. 1965, leg. S. KIMOTO).

Distribution: Honshu, Shikoku, Kyushu, Nakanoshima, Suwanosejima, Amami-Ōshima, Okinawa Is. & Formosa.

*Mordellina* (s. str.) *signatella* (MARSEUL)

*Mordellistena signatella* MARSEUL, 1876, Ann. Soc. Ent. Fr., p. 476; KONO, 1934, p. 117; KONO, 1936, p. 45.

*Glipostenoda (Glipostenodella) signatella*: CHŪJŌ, 1956, Kontyū, XXIV, 3, p. 177.

*Pseudomordellistena signatella*: NOMURA, 1963, p. 252.

*Mordellina* (s. str.) *signatella*: NOMURA, 1966, Ent. Rev. Japan, XVIII, 2, p. 50.

*Mordellistena nigrofasciata* CHŪJŌ, 1935, p. 74.

Hab.: Paroe (Oct., KONO, 1934); Taihoku (10 Oct., ex CHŪJŌ, 1935).

Distribution: Honshu, Shikoku, Kyushu, Yakushima, Amami-Ōshima, Kikaigashima, Okinawa Is., Ishigaki Is., Iriomote Is., Yonaguni Is. & Formosa.

*Mordellina* (s. str.) *atrofusca* (NOMURA)

*Mordellistena (Mordellina) atrofusca* NOMURA, 1951, p. 60.

*Mordellistena (Pseudomordellina) atrofusca*: NAKANE, 1957, Bull. Osaka Mun. Mus. Nat. Hist., No. 9, p. 52.

*Pseudomordellistena atrofusca*: NOMURA, 1963, p. 252; NOMURA, 1965, p. 146.

*Mordellina* (s. str.) *atrofusca*: NOMURA, 1966, Ent. Rev. Japan, XVIII, 2, p. 50.

Hab.: Urai-Aō (1 ex., 11 Jul. 1961, leg. M. OGATA); Yanminshan (1 ♂, 25 May 1965, leg. K. MORIMOTO); Nanzankei (1 ♀, 26 Jun. 1965, leg. T. SHIRŌZU); Honbukei (1 ♀, 2 May 1965, leg. T. SHIRŌZU).

Distribution: Honshu, Shikoku, Kyushu, Tsushima, Yakushima, Nakanoshima, Amami-Ōshima & Formosa.

*Mordellina* (s. str.) *marginalis* sp. nov. (Fig. 12)

Rufous, with basal antennal joints, mouth part, front legs and hind tibial spurs fulvous, apices of 5th to last antennal joints, the middle of pygidium and basal part of each abdominal sternite fuscous and following areas blackish: Eyes, a round patch on the middle of head, pronotum (basal and lateral margins and middle part of front margin excepted), an elongate maculation on basal third of suture, lateral stripes along margins from basal fourth to suture near apices of elytra, large part of metasternum and of metacoxae and combs of hind legs. Surface of body covered with fulvous pubescence, except fuscous one on the following areas: An anterior oblong and three basal oval patches on pronotum, sutural and marginal stripes at basal third of elytra, large part on apical half of each elytron and middle part of pygidium.

Head convex, minutely punctate, with eyes relatively large and oval. Terminal joint of maxillary palpi subtrapezoid, broadly rounded at inner angle. Antennae with 4th joint as long as 3rd, 5th twice length of 4th, 5th to 10th serrate, gradually decreasing in length, 1.3 times as long as respective breadth, last joint elongate-oval,



half longer than 10th.

Pronotum broader than long (0.8:0.7 mm.), with lateral margins feebly sinuate in profile, hind angles subrectangular. Scutellum broad-triangular, rounded at apex. Elytra 2.2 times as long as broad, with apex separately rounded.

Pygidium three times as long as anal sternite, feebly curved downwards, rather broad at base, attenuate to apex, which is pointed. Penultimate tarsal joints of four anterior legs simple, not dilated. Combs of hind legs strongly oblique, 3; 2, 1, 0. Basal comb of hind tibiae the longest, fully reaching to basal fifth of tibial length, but not reaching to ventral margin. Inner terminal spur of hind tibiae a little longer than half of basitarsi, outer one absent. Body length: 2.7 mm. (excl. head & pygidium).

Holotype: ♀, Nanzankei, 26 Jun. 1965, leg. T. SHIRÔZU. (Type in coll. of Ent. Lab., Kyushu University).

Distribution: Formosa.

This species differs from its closest ally, *M. brunneotincta* MARSEUL, in the different mode of elytral maculations, the form of the maxillary palpi and a little longer antennae.

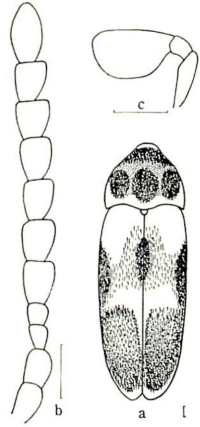


Fig. 12.

*Mordellina* (s. str.)  
*marginalis* sp. nov.

a. body in dorsal view;

b. antenna (♀);

c. maxillary palpus (♀).

*Falsomordellistena inouei* (NOMURA) comb. nov.

*Mordellistena inouei* NOMURA, 1951, p. 50.

*Mordellistena arisana* NOMURA, 1951, p. 53 (syn. nov.).

*Mordellistena capillata* NOMURA, 1951, p. 54 (syn. nov.).

Hab.: Mt. Taiheizan (23 Jun. 1938, leg. H. INOUE; 8 Jul. 1920, leg. T. KANO); Mt. Rarasan (19 Jun. 1938, leg. S. NOMURA); Mt. Arisan (7-10 Jun. 1938, leg. H. INOUE; 5 Jun., leg. Y. YANO); Mt. Tattaka (21 Jun. 1939, leg. H. SAWADA; 1 Jun. 1965, leg. T. SHIRÔZU); Baibara (1964, leg. T. SHIRÔZU).

Distribution: Formosa.

This species is varied in the colour of the body and the number of combs of the hind legs. The body black, with the pronotum and head generally rufous, rarely piceous to black. Third tarsal joint of the hind legs generally has two combs, rarely lacks them.

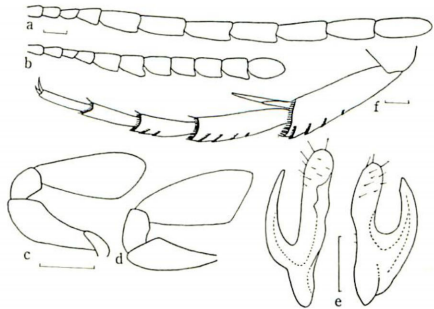


Fig. 13.

*Falsomordellistena ayahime* sp. nov.

a. antenna (♂); b. ditto (♀); c. maxillary palpus

(♂); d. ditto (♀); e. male genitalia.

*Falsomordellistena ayahime*  
sp. nov. (Fig. 13)

Black, with basal antennal joints and hind tibial spurs fuscous, mouth part fulvous, four anterior tibiae and tarsi piceous. Surface of body covered with fuscous pubescence, except fulvous one on

the following parts: Margins of pronotum, scutellum, humeral triangular area, narrow sutural stripe on basal third of elytra, broad fascia just behind the middle of elytra, metasternum, episternum, basal part of each abdominal sternite and of pygidium.

Eyes oval, very feebly emarginate at antero-dorsal margin. Terminal joint of maxillary palpi elongate-triangular, with apical margin shorter than inner one. Antennae with 4th joint subequal in length, but a little broader than 3rd, 5th to 10th filiform in male, serrate in female, each joint 2.3-2.5 times as long as respective breadth in male, 1.5 times in female, last joint one-fourth longer than 10th.

Pronotum a little broader than long (0.83: 0.80 mm.), with lateral margins nearly straight in profile, hind angles rounded. Scutellum broad-triangular, rounded at apex. Elytra twice as long as broad, with apex separately rounded.

Pygidium stout, a little shorter than twice length of anal sternite, pointed at apex. Penultimate tarsal joints of four anterior legs dilated and emarginate at apex. In male, front trochanters and front femora each with a blackish bristle at anterior margin. Combs of hind legs moderately oblique, short, 4-5; 3-4, 2-3, 0. Combs of hind tibiae not reaching to one-third breadth of tibial outer surface. Outer terminal spur of hind tibiae as long as three-fifths of inner one. Body length: 2.5-3.4 mm. (excl. head & pygidium).

Holotype: ♂, allotype: ♀, paratypes: 3♂, 4♀, Baibara, 1964, leg. T. SHIRÔZU. (Holotype in coll. of Ent. Lab., Kyushu University).

Distribution: Formosa.

This species somewhat resembles *F. loochooana* NOMURA from Amami-Ôshima and Okinawa Is., but it differs from the latter in the pattern of elytral maculations, especially lack of the sutural stripe behind median fascia, the elongate terminal joint of the maxillary palpi and the shorter antennae of the female.

*Falsomordellistena humerosignata* sp. nov. (Fig. 14)

Rufous, with combs of hind legs black and following parts infusate: Median area of head and of pronotum, antennae (basal four joints excepted), elytra (humeral oblique spots, median fascia and narrow sutural stripe behind fascia excepted), large part of meso- and metasternum and of hind coxae, sides of abdominal sternites and apical half of pygidium. Surface of body covered with fine, recumbent pubescence, generally partaking of ground colour, i.e. fuscous pubescence on infusate areas and fulvous one on rufous areas.

Head moderately convex,

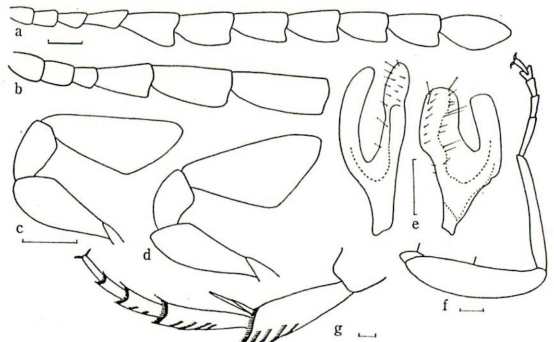


Fig. 14.

*Falsomordellistena humerosignata* sp. nov.

- a. antenna (♀); b. ditto (♂); c. maxillary palpus (♂);  
d. ditto (♀); e. male genitalia; f. front leg (♂);  
g. hind leg.

minutely punctate, with eyes oval. Maxillary palpi with 2nd joint somewhat dilated in male, terminal joint elongate-triangular in male, rather broader in female, its apical margin more (♂) or less (♀) shorter than inner one. Antennae with 4th joint somewhat dilated and 2.5 times length of 3rd in male, slender and 1.5 times in female, 5th to 10th feebly serrate and 2.0-2.4 times as long as broad in male, 1.5-1.6 times in female.

Pronotum broader than long (1.1:0.9 mm.), with lateral margins nearly straight in profile, hind angles rounded. Scutellum broad-triangular, rounded at apex. Elytra twice as long as broad, with apex separately rounded.

Pygidium somewhat slender, feebly curved downwards, 1.8 times length of anal sternite in male, stout, nearly straight and 1.5 times length of anal sternite in female. Penultimate tarsal joints of four anterior legs dilated and emarginate at apex. In male, front trochanters and front femora each with a blackish bristle at anterior margin. Combs of hind legs moderately oblique, rather short, 4; 3-4, 2, 0. Basal comb of hind tibiae the shortest, apical three combs subequal in length with each other, reaching to one-third breadth of tibial outer surface. Outer terminal spur of hind tibiae a little longer than half of inner one. Body length: 3.4-3.8 mm. (excl. head & pygidium).

Holotype: ♂, allotype: ♀, paratype: 1 ♀, Kôtôsho (Botel-Tobago Is.), 9 May 1939, leg. S. HIRAYAMA. (Types in my coll.)

Distribution: Formosa (Botel-Tobago Is.).

This species is easily separated from *F. ayahime* described above, by the different colouration of the body and the longer combs of hind legs.

### *Falsomordellistena konoi konoi* (PIC)

*Mordellistena horni* KÔNO (nec PIC), 1934, p. 118; KÔNO, 1936, p. 52.

*Mordellistena konoi* PIC, 1936, Bull. Soc. Zool. Fr., LXI, p. 300; ERMISCH, 1941, p. 45.

*Falsomordellistena konoi*: NOMURA, 1951, p. 65; NOMURA, 1963, p. 253.

Hab.: Musha (Jul. 1958); Konden (May 1940, leg. Y. YANO); Tamari (Apr. 1934, leg. Y. YANO); Kwarenkô (Mar. 1940, leg. Y. YANO); Urai (19 May 1920, leg. T. KANO); Hori (26 Apr. 1929, leg. K. SATÔ; 1964, leg. R. KAWASAKI; 2 exs., 2 Jun. 1965, leg. T. SHIRÔZU); Baibara (124 exs., 1964, leg. T. SHIRÔZU); Baikei (3 exs., 12-16 May 1965, leg. T. SHIRÔZU); Honbukei (1 ex., 27 Apr. 1965, leg. T. SHIRÔZU); Yanminshan (7 exs., 24 Jun. 1965, leg. S. KIMOTO).

Distribution: Formosa.

### *Falsomordellistena konoi kotoensis* subsp. nov. (Fig. 15)

Differs from the nominate form in the colouration of the body, the form of the antennal joints and of the male genitalia.

Black, with mouth part and basal antennal joints rufous, hind tibial spurs rufous. Surface of body covered with fulvous pubescence, which has pale yellow lustre or violet lustre in the conditions of light. Terminal joint of maxillary palpi elongate-triangular, with apical margin shorter than inner one. Antennae with 5th to 10th joints feebly serrate in male, distinctly serrate in female, each joint rounded at inner margin. Dorsal branch of left paramere broad and rounded at apex, whereas in the

nominate form slender and acute at apex. Body length: 2.5–2.8 mm. (excl. head & pygidium).

Holotype: ♂, allotype: ♀, Kôtôsho (Botel-Tobago Is.), 9 May 1939, leg. S. HIRAYAMA. (Types in my coll.).

Distribution: Formosa (Botel-Tobago Is.).

*Falsomordellistena*  
*hime* (KÔNO)  
comb. nov.

*Mordellistena hime* KÔNO,  
1928, p. 41; KÔNO, 1936,  
p. 49.

*Falsomordellistena altestrigata*: ERMISCH (nec MARSEUL), 1950, p. 84; NOMURA, 1951, p. 64.

Hab.: Formosa.

Distribution: Formosa.

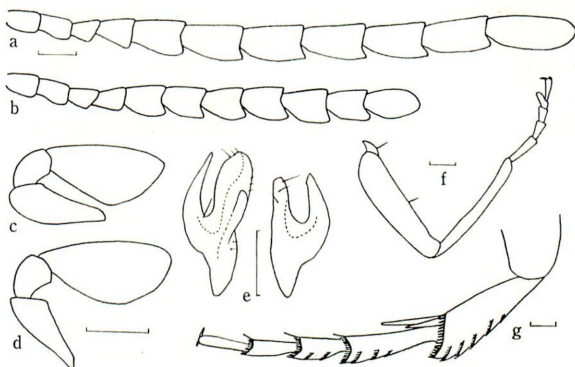


Fig. 15.

*Falsomordellistena konoi kotoensis* subsp. nov.

a. antenna (♂); b. ditto (♀); c. maxillary palpus (♂);  
d. ditto (♀); e. male genitalia; f. front leg (♂);  
g. hind leg.

*Falsomordellistena altestrigata* (MARSEUL)

*Mordellistena altestrigata* MARSEUL, 1876, Ann. Soc. Ent. Fr., p. 474; MIWA, 1931, p. 175; KÔNO, 1934, p. 117; KÔNO, 1936, p. 50.

*Falsomordellistena altestrigata*: NOMURA, 1963, p. 253.

*Mordellistena sauteri* PIC, 1926, p. 67.

*Falsomordellistena sauteri*: ERMISCH, 1950, p. 84; NOMURA, 1951, p. 65.

Hab.: Kôshun (KÔNO, 1934); Taihorin (MIWA, 1931); Baibara (177 exs., 1964, leg. T. SHIRÔZU); Miharashi (2 exs., 3 May 1965, leg. T. SHIRÔZU); Nanzankei (14 exs., 6, 28 & 30 May 1965, leg. T. SHIRÔZU); Honbukei (4 exs., 27 May 1965, leg. T. SHIRÔZU); Baikei (12 exs., 12–16 May 1965, leg. T. SHIRÔZU); Yanminshan (52 exs., 24 Jun. 1965, leg. S. KIMOTO); Urai (2 exs., 27 May 1965, leg. K. MORIMOTO); Rimogan (1 ex., 18 Jun. 1938, leg. S. NOMURA); Hiraiwa (2 exs., 3 Jul. 1941, leg. H. HASEGAWA).

Distribution: Honshu, Shikoku, Kyushu, Tsushima, Yakushima, Kuchino-erabujima, Amami-Ôshima, Miyako Is., Ishigaki Is., Iriomote Is., Yonaguni Is., Formosa & S. China.

*Falsomordellistena formosana* (PIC)

*Mordellistena formosana* PIC, 1911, p. 190; MIWA, 1931, p. 175; KÔNO, 1936, p. 48.

*Falsomordellistena formosana*: ERMISCH, 1941, p. 725; NOMURA, 1951, p. 66.

Hab.: Fuhosho (PIC, 1911); Kwarenkô (MIWA, 1931); Hori (1 ♀, 26 May 1927, leg. K. KAMIYA); Honbukei (1 ♂, 27 Apr. 1965, leg. T. SHIRÔZU); Nanzankei (1 ♂, 1 ♀, 20

Jun. 1965, leg. T. SHIRÔZU).

Distribution: Formosa.

*Falsomordellistena aurosuturalis* sp. nov. (Fig. 16)

Black, with basal part of each elytron, antennae, mouth part, tarsi, four anterior tibiae and hind tibial spurs rufous, maxillary palpi and front femora fulvous. Surface of body covered with fuscous pubescence, except fulvous one with golden lustre on the following areas: Anterior part of head, margins of pronotum, scutellum, humeri, basal and sutural margins of elytra, episternum, metasternum, outer margins of hind coxae, latero-basal part of abdominal sternites and legs.

Head moderately convex, minutely punctate, with eyes oval, finely faceted. Maxillary palpi with 2nd joint somewhat dilated in male, terminal joint elongate-triangular, its apical margin shorter than inner one. Antennae filiform, with 4th joint short, as long as 3rd, 5th 2.5 times length of its breadth and of 4th joint, 6th to 10th about three times length of respective breadth, last joint one-fourth longer than 10th.

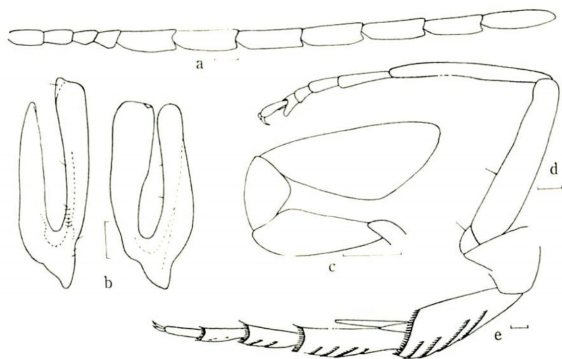


Fig. 16.

*Falsomordellistena aurosuturalis* sp. nov.

a. antenna (♂); b. male genitalia; c. maxillary palpus (♂);  
d. front leg (♂); e. hind leg.

Pronotum broader than long (1.3:1.5 mm.), with lateral margins nearly straight in profile, hind angles rounded. Scutellum broad-triangular, rounded at apex. Elytra 2.2 times as long as broad, with apex separately rounded.

Pygidium stout, twice length of anal sternite, feebly curved downwards, pointed at apex. Penultimate tarsal joints of front legs bilobed, those of middle legs dilated and emarginate at apex. In male, front trochanters and front femora each with a blackish bristle at anterior margin. Combs of hind legs strongly oblique, 4; 4, 2, 0. Basal two combs of hind tibiae reaching to median axis of tibial outer surface. Penultimate joints of hind tarsi with some blackish setae like the vestige of combs. Outer terminal spur of hind tibiae two-fifths length of inner one. Body length: 4.15 mm. (excl. head & pygidium).

Holotype: ♂, Baibara, 1964, leg. T. SHIRÔZU. (Type in coll. of Ent. Lab., Kyushu University).

Distribution: Formosa.

This species somewhat resembles *F. formosana* Pic, but it may easily be separated from the latter in the colouration of the body, the longer antennae and the peculiar male genitalia.

*Falsomordellistena hiranoi takasagoana* subsp. nov. (Fig. 17)

This subspecies differs from the nominate form in the number of tibial combs and the form of male genitalia. In this subspecies, the combs of hind legs oblique, somewhat long, 6; 3-4, 2, 0, whereas in the nominate form the hind tibiae have generally four combs. Body length: 4.4-5 mm. (excl. head & pygidium).

Holotype: ♂, paratype: 1 ♂, Yanminshan, 24 Jun. 1965, leg. S. KIMOTO; allotype: ♀, paratypes: 3 ♀, Baibara, 1964, leg. T. SHIRÔZU. (Holotype in coll. of National Sci. Mus., Tokyo).

Distribution: Formosa.

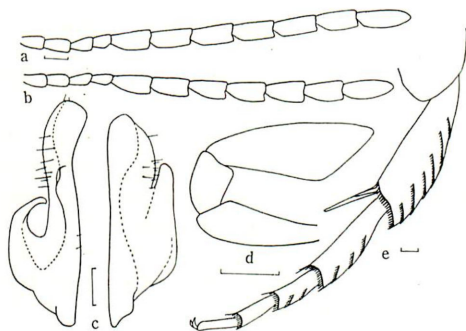


Fig. 17.

*Falsomordellistena hiranoi takasagoana* subsp. nov.

a. antenna (♂); b. ditto (♀); c. male genitalia;  
d. maxillary palpus (♂); e. hind leg.

*Glipostenoda trichophora* (NOMURA) comb. nov.

*Mordellistena trichophora* NOMURA, 1951, p. 55.

*Falsomordellistena trichophora*: NOMURA, 1961, Tôhō-Gakuhō, No. 11, p. 81; NOMURA, 1963, p. 253.

Hab.: Baibara (8 ♂, 3 ♀, 1964, leg. T. SHIRÔZU); Yanminshan (2 ♀, 24 Jun. 1965, leg. S. KIMOTO).

Distribution: Honshu, Kyushu, Ishigaki Is. (new record, 1 ♀, Mt. Banna-dake, 19 Jun. 1965, leg. K. HATTA), Formosa (new record) & China (Manchuria).

*Glipostenoda taiwana* (KÔNO) comb. nov.

*Mordellistena taiwana* KÔNO, 1934, p. 117; KÔNO, 1936, p. 52.

*Falsomordellistena taiwana*: NOMURA, 1951, p. 65; NOMURA, 1965, p. 146.

Hab.: Kankau (Jun.-Jul., KÔNO, 1934); Keitō (27 Jun. 1961, leg. M. OGATA); Baibara (54 exs., 1964, leg. T. SHIRÔZU); Yanminshan (2 exs., 24 Jun. 1965, leg. S. KIMOTO); Hori (3 exs., 1964, leg. R. KAWASAKI); Takezaki (1 ex., Jun. 1938, leg. H. INOUE); Rokkiri (7 exs., 14 May 1941); Mt. Rarasan (1 ex., 20 Jun. 1938, leg. S. NOMURA); Urai (1 ex., 6 Aug. 1941, leg. H. HASEGAWA).

Distribution: Formosa.

*Glipostenoda lineatisuturalis* sp. nov. (Fig. 18)

Black to piceous, rarely dark red-brown, with four anterior legs, hind tarsi and hind tibial spurs rufous, mouth part, basal antennal joints and front femora fulvous. Dorsal surface of body clothed with fuscous pubescence, except fulvous one on head,

anterior area and basal margin of pronotum, scutellum and sutural margin of elytra. Ventral surface covered with fulvous pubescence, except fuscous one on outer areas of hind coxae, latero-apical areas of basal four abdominal sternites, apical four-fifths of anal sternite and of pygidium.

Eyes circular, emarginate at antero-dorsal margin. Terminal joint of maxillary palpi elongate-triangular, with apical margin shorter than inner one. Antennae with 3rd and 4th joints slender, subequal in length, 5th to 10th feebly serrate, twice as long as respective breadth, last joint elongate, one-third longer than 10th in male, oval and one-sixth longer than 10th in female.

Pronotum broader than long (1.5:1.3 mm.), with lateral margins nearly straight in profile, hind angles rounded. Scutellum broad-triangular, rounded at apex. Elytra twice as long as broad in female, a little longer in

male, with apex separately rounded.

Pygidium 2.3 times as long as anal sternite, feebly curved downwards in both sexes. Front trochanter with a blackish bristle in male. Penultimate joints of four anterior tarsi dilated and emarginate at apex. Combs of hind legs strongly oblique, 4; 3, 2, 0. Basal comb of hind tibiae short and indistinct, 3rd comb the longest, approaching to base of tibia, reaching to median axis of tibial outer surface. Outer terminal spur of hind tibiae one-third length of inner one. Body length: 4.8-5.4 mm. (excl. head & pygidium).

Holotype: ♂, allotype: ♀, Baikei, 13 May 1965, leg. T. SHIRÔZU; paratypes: 1 ♂, 1 ♀, Baibara, 1964, leg. T. SHIRÔZU; 1 ♀, Honbukei, 27 Apr. 1965, leg. T. SHIRÔZU. (Holotype in coll. of Ent. Lab., Kyushu University).

Distribution: Formosa.

This species is very nearly allied to *F. taiwana* (KÔNO) and *F. rosseola* (MARSEUL), but it differs from the second in the larger body, the longer antennae and the longer 3rd comb of hind tibiae, from the third species it may easily be separated by having fuscous pubescence on the parts of elytra, pygidium and of abdominal sternites.

*Glipostenoda kawasaki* sp. nov. (Fig. 19)

Rufo-fuscous, with mouth part, basal antennal joints, four anterior legs and hind tibial spurs fulvous, combs of hind legs black. Surface of body covered with fulvous pubescence, except fuscous one on apical part of elytra, latero-apical areas of basal four

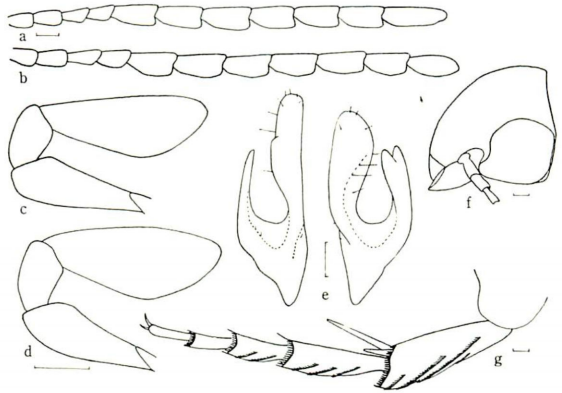


Fig. 18.

*Glipostenoda lineatisuturalis* sp. nov.

a. antenna (♂); b. ditto (♀); c. maxillary palpus (♂); d. ditto (♀); e. male genitalia; f. head in profile; g. hind leg.

abdominal sternites and apical four-fifths of anal sternite and of pygidium.

Eyes oval, finely faceted, emarginated at antero-dorsal margin. Terminal joint of maxillary palpi elongate-triangular, with apical margin distinctly shorter than inner one. Antennae with 3rd and 4th joints slender, subequal in length, 5th to 10th feebly serrate, 1.7 times as long as respective breadth, last joint elongate oval, one-third longer than 10th.

Pronotum broader than long (1.7: 1.4 mm.), with lateral margins nearly straight in profile, hind angles rounded. Scutellum broad-triangular, rounded at apex. Elytra twice as long as broad, with apex separately rounded.

Pygidium 2.3 times length of anal sternite, very feebly curved downwards in female. Front and middle tarsi shorter than respective tibiae. Penultimate tarsal joints of four anterior legs bilobed. Combs of hind legs long and strongly oblique, 4-5; 4, 3, 0. Hind tibiae with 4th comb the longest, reaching to median axis of tibial outer surface, rarely with 5th comb short and rudimentary. Outer terminal spur of hind tibiae a little shorter than one-third of inner one. Body length: 4.2-5 mm. (excl. head & pygidium).

Holotype: ♀, paratypes: 1 ♀, Hori, 1964, leg. R. KAWASAKI; 1 ♀, Baibara, 1964, leg. T. SHIRÔZU. (Holotype in my coll.)

Distribution: Formosa.

This species is somewhat nearly allied to *G. rosseola* (MARSEUL), but it differs from the latter in the larger body, the rather longer antennae, the longest 4th comb of hind tibiae and having three combs on 2nd tarsal joint.

### *Glipostenoda higashinoi* NOMURA

*Glipostenoda higashinoi* NOMURA, 1951, p. 67; NOMURA, 1963, p. 254.

Hab.: Musha (Jul. 1934); Bonbon (25 Jun. 1941, leg. A. KIRA); Baibara (1 ♀, 1964, leg. T. SHIRÔZU); Urai (3 ♀, 27 May 1965, leg. K. MORIMOTO); Kuraru (1 ♀, 25 May 1938, leg. S. NOMURA).

Distribution: Ishigaki Is. & Formosa.

### *Glipostenoda shizuokana* (KÔNO)

*Mordellistena shizuokana* KÔNO, 1935, p. 128; KÔNO, 1936, p. 58.

*Glipostenoda shizuokana*: NOMURA, 1951, p. 67; ERMISCH, 1951-52, Ent. Blätter, 47-48, p. 153; NOMURA, 1963, p. 254.

Hab.: Nanzankei (1 ♂, 6 May 1965, leg. T. SHIRÔZU).

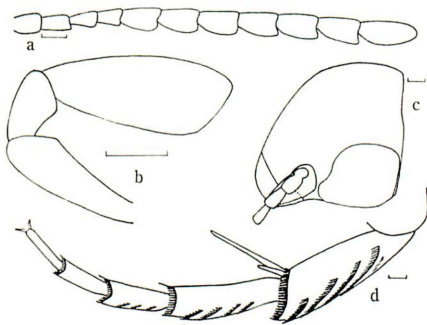


Fig. 19.

*Glipostenoda kawasaki* sp. nov.

a. antenna (♀); b. maxillary palpus (♀);  
c. head in profile; d. hind leg.



Distribution: Honshu, Shikoku, Kyushu, Yakushima, Formosa & China (Fukien).

*Glipostenoda rarasana* NOMURA

*Glipostenoda rarasana* NOMURA, 1951, p. 69; NOMURA, 1963, p. 254.

Hab.: Mt. Rarasan (18 Jun. 1938, leg. S. NOMURA); Urai (1 ♀, 27 May 1965, leg. K. MORIMOTO); Dandan (1 ♂, 23 May 1926, leg. T. KANO).

Distribution: Amami-Ōshima & Formosa.

*Glipostenoda takashii* sp. nov. (Fig. 20)

Black, with antennae and legs rufous to rufo-piceous, mouth part and front femora fulvous. Surface of body clothed with fuscous pubescence, except fulvous one which has golden lustre on the following areas: Basal margin of pronotum and of elytra, scutellum, basal area of pygidium, episternum, metasternum and latero-basal areas of 1st to 3rd abdominal sternites.

Eyes oval, subangulate at hind angle. Terminal joint of maxillary palpi elongate-triangular, with apical margin shorter than inner one. Pronotum broader than long (2.0:1.7 mm.), with lateral margins nearly straight in profile, hind angles rounded. Scutellum broad-triangular, rounded at apex. Elytra 2.5 times as long as broad, with apex separately rounded, but the tips obtusely angulate.

Pygidium stout, a little shorter than twice of anal sternite. Penultimate joints of four anterior tarsi bilobed. Front tarsi shorter than tibiae, middle tarsi as long as middle tibiae. Combs of hind

legs strongly oblique, 5; 3, 2, 2. Hind tibiae with 4th comb the longest, reaching to median axis of tibial outer surface. Outer terminal spur of hind tibiae one-third length of inner one. Body length: 5.7 mm. (excl. head & pygidium).

Holotype: ♀, Baikei, 13 May 1965, leg. T. SHIRŌZU. (in coll. of Ent. Lab., Kyushu University).

Distribution: Formosa.

This species is somewhat allied to *G. matsumurai* (KŌNO), but it is easily separated from the latter in the blackish body and the oval eyes.

*Glipostenoda matsumurai* (KŌNO)

*Mordellistena matsumurai* KŌNO, 1932, p. 154; KŌNO, 1935, p. 129; KŌNO, 1936, p. 57.  
*Glipostenoda matsumurai*: NOMURA, 1951, p. 69; ERMISCH, 1951-52, Ent. Blätter, 47-48,

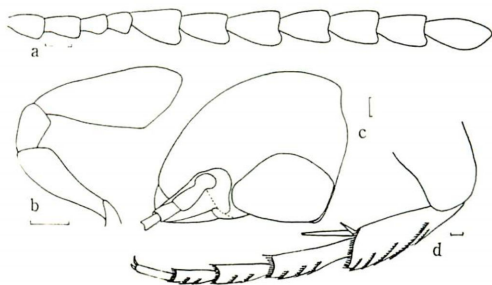


Fig. 20.

*Glipostenoda takashii* sp. nov.

a. antenna (♀); b. maxillary palpus (♀);  
c. head in profile (♀); d. hind leg.

p. 152; NOMURA, 1963, p. 254.

Hab.: Kusukusu-Shijukei (20-21 Apr., ex KÔNO, 1932); Baibara (1 ♂, 1964, leg. T. SHIRÔZU); Urai (1 ♀, 27 May 1965, leg. K. MORIMOTO).

Distribution: Shikoku (ex KATÔ, 1956), Iriomote Is. (ex KÔNO, 1935), Formosa & China (Fukien, ex ERMISCH, 1952).

*Glipostenoda rimogana* sp. nov. (Fig. 21)

Rufous, with head (anterior area excepted), abdominal sternites, episternum, large part of metasternum and of hind coxae nigro-fuscous, middle part of pronotum, suture and apical half of elytra infuscate, combs of hind legs black, front femora fulvous. Surface of body covered with fulvous pubescence, except fuscous one on the same ground colour.

Eyes subrhombic, feebly emarginate at antero-dorsal margin. Maxillary palpi with 2nd joint somewhat dilated in male, terminal joint broad-triangular, its inner and apical margins subequal in length. Antennae with 3rd and 4th joints short, 5th to 10th feebly serrate, 2.3 times as long as broad, last joint one-fourth longer than 10th.

Pronotum broader than long (1.45:1.2 mm.), with lateral margins nearly straight in profile, hind angles rounded. Scutellum broad-triangular, rounded at apex. Elytra 2.3 times as long as broad, with apex separately rounded.

Pygidium nearly straight, 2.3 times length of anal sternite. Front tarsi distinctly, middle tarsi a little shorter than respective tibiae. Penultimate joints of four anterior tarsi dilated and emarginate at apex. Front femora and trochanters each with a blackish bristle at anterior margin. Combs of hind legs strongly oblique, 5; 3, 2, 1. Hind tibiae with 3rd comb the longest, reaching to median axis of tibial outer surface. Outer terminal spur of hind tibiae one-half length of inner one. Body length: 4.5 mm. (excl. head & pygidium).

Holotype: ♂, Rimogan-Magan, 10 Jul. 1961, leg. T. SHIRÔZU. (Type in my coll.).

Distribution: Formosa.

This species is very closely allied to *G. matsumurai* (KÔNO), but it differs from the latter in the colouration of the body, the subrhombic eyes, having only one comb on the 3rd tarsal joint of hind legs and the form of the male genitalia.

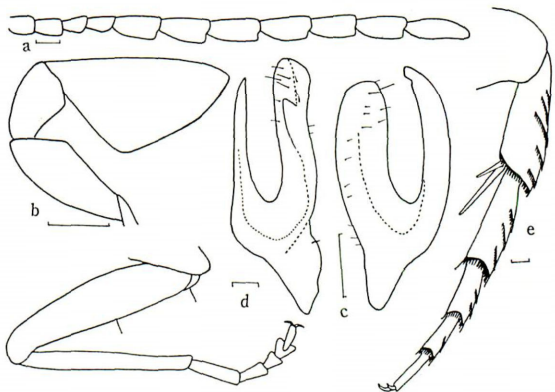


Fig. 21.

*Glipostenoda rimogana* sp. nov.

- a. antenna (♂); b. maxillary palpus (♂); c. male genitalia;  
d. front leg (♂); e. hind leg.

*Falsomordellina luteoloides* (NOMURA)

*Mordellistena luteora* KÔNO, 1932, p. 115; *luteola*: KÔNO (nec CHAMPION), 1936, p. 59.  
*Glipostenoda luteola*: NOMURA, 1951, p. 69; ERMISCH, 1951-52, Ent. Blätter, 47-48, p. 152.  
*Glipostenoda luteoloides* NOMURA, 1961, Tôhō-Gakuhô, No. 11, p. 83.  
*Mordellistena luteoloides*: NOMURA, 1963, p. 254.

*Falsomordellina luteoloides*: NOMURA, 1966, Ent. Rev. Japan, XVIII, 2, p. 45, 51.

Hab.: Yanminshan (2♂, 1♀, 25 May 1965, leg. K. MORIMOTO); Urai (1♂, 1♀, 27 May 1965, leg. K. MORIMOTO).

Distribution: Honshu, Shikoku, Kyushu, Tsushima, Tanegashima, Yakushima, Nakanoshima, Takarajima, Amami-Ōshima, Okinawa Is., Miyako Is., Ishigaki Is., Iriomote Is., Formosa & China.

*Falsomordellina nigripennis* sp. nov. (Fig. 22)

Rufous, with antennae (basal three joints excepted), eyes and elytra piceous, apex of pygidium and combs of hind legs black, front femora fulvous. Surface of body covered with fine, recumbent pubescence, partaking of ground colour.

Eyes oval, subangulate at posterior angle, very feebly emarginate at antero-dorsal margin. Terminal joint of maxillary palpi elongate-triangular, with apical margin much shorter than inner one. Antennae filiform, with 2nd and 3rd joints subequal in length, 4th to 10th 2.6-3.0 times as long as respective breadth, last joint one-fourth longer than 10th.

Pronotum broader than long (1.5:1.2 mm.), with lateral margins nearly straight in profile, hind angles rounded. Scutellum broad-triangular, rounded at apex. Elytra twice as long as broad, with apex separately rounded.

Pygidium stout and short, 1.5 times length of anal sternite. Penultimate joints of four

anterior tarsi bilobed. Front tarsi distinctly, middle tarsi a little shorter than respective tibiae. Combs of hind legs strongly oblique, somewhat short, 5;4,2,2. Hind tibiae with 4th comb the longest, reaching to one-third breadth of tibial outer surface. Outer terminal spur of hind tibiae one-half length of inner one. Body length: 4.3 mm. (excl. head & pygidium).

Holotype: ♀, Kôtôsho (Botel-Tobago Is.), 14 May 1939, leg. S. HIRAYAMA. (Type in my coll.)

Distribution: Formosa (Botel-Tobago Is.)

This species is somewhat allied to *F. ohsumiana* (NAKANE) from Japan, but it may easily be distinguished from the latter in the piceous elytra, the short pygidium

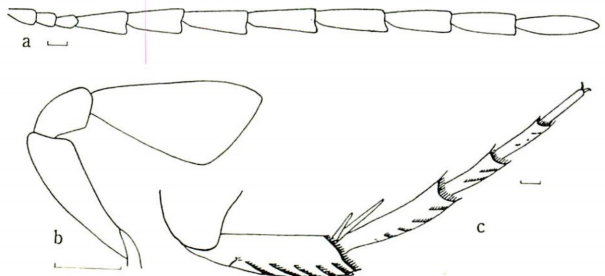


Fig. 22.

*Falsomordellina nigripennis* sp. nov.

a. antenna (♀); b. maxillary palpus (♀); c. hind leg.

and the numerous combs of hind legs.

*Glipostena pelecotomoidea* (Pic)

*Mordellistena pelecotomoidea* Pic, 1911, p. 188; MIWA, 1931, p. 175; KÔNO, 1936, p. 48.

*Glipostena pelecotomoidea*: ERMISCH, 1941, p. 713, 724; NOMURA, 1951, p. 70; NOMURA, 1963, p. 255.

Hab.: Taihorinsho (Pic, 1911); Bانشoryo (Miwa, 1931).

Distribution: Honshu, Amami-Ôshima, Ishigaki Is., Iriomote Is. & Formosa.

*Pseudotolida awana* (KÔNO) comb. nov.

*Mordellistena awana* KÔNO, 1932, p. 157; KÔNO, 1936, p. 56.

*Falsomordellistena awana*: NOMURA, 1951, p. 64; NOMURA, 1963, p. 253.

*Glipostenoda awana*: ERMISCH, 1951-52, Ent. Blätter, 47-48, p. 152.

*Glipostenoda mitsuhashii* NOMURA, 1951, p. 68. (syn. nov.).

*Pseudotolida tokyoensis* NOMURA et KATÔ, 1959, Ent. Rev. Japan, X, 1, p. 6; NOMURA, 1963, p. 255. (syn. nov.).

Hab.: Souzan (3 Aug. 1941, leg. H. HASEGAWA).

Distribution: Honshu, Shikoku & Formosa.

*Pseudotolida morimotoi* sp. nov. (Fig. 23)

Rufo-fuscous, with antennae, front femora and hind tibial spurs fulvous, apices of mandibles, combs of hind legs black. Surface of body covered with fine, recumbent, fulvous pubescence.

Eyes of male large, emarginate anteriorly, separated each other a little narrower than their breadth, in female smaller, sub-rhombic, feebly emarginate at antero-dorsal margin, separated each other twice of their breadth. Terminal joint of maxillary palpi oblong, thick and hollowed at apical margin in male, elongate-oval in female, 2nd joint rather dilated in male. Antennae filiform in male, feebly serrate in female, with 4th joint slender, a little longer than 3rd in male, shorter in female, 5th to 10th 2.5-2.9 times as long as broad in male, 1.8-2.0 times in female, last joint one-fourth longer than 10th in both sexes.

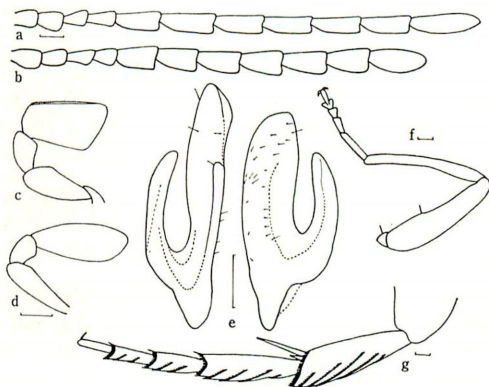


Fig. 23.

*Pseudotolida morimotoi* sp. nov.

a. antenna (♂); b. ditto (♀); c. maxillary palpus (♂);  
d. ditto (♀); e. male genitalia; f. front leg (♂);  
g. hind leg.

Pronotum broader than long (1.3:1.1 mm.), with lateral margins nearly straight in

profile, hind angles rounded. Scutellum broad-triangular, rounded at apex. Elytra 2.3 times as long as broad, with apex separately rounded.

Pygidium feebly curved downwards, 2.5 times length of anal sternite in male, nearly straight and twice length of anal sternite in female. Penultimate tarsal joints of four anterior legs bilobed. Front tarsi distinctly, middle tarsi a little shorter than respective tibiae. Front femora and trochanters each with a blackish bristle in male. Front tibiae incurved in male, nearly straight in female. Combs of hind legs strongly oblique, 5; 4, 2, 2. Basal comb of hind tibiae and of 1st tarsal joint short and indistinct, 3rd comb of hind tibiae the longest, reaching to median axis of tibial outer surface. Outer terminal spur of hind tibiae one-third length of inner one. Body length: 4.3–4.8 mm. (excl. head & pygidium).

Holotype: ♂, Yanminshan, 25 May 1965, leg. K. MORIMOTO; allotype: ♀, 27 May 1965, leg. K. MORIMOTO. (Holotype in coll. of National Sci. Mus., Tokyo).

Distribution: Formosa.

This is very closely related to *P. multisulcata* NOMURA from Iriomote Is., but it differs from the latter in the colouration of the body, the smaller number of combs on hind legs, the shorter outer terminal spur of hind tibiae and the form of the terminal joint of maxillary palpi.

### *Mordellochroa yanoi* (NOMURA) comb. nov. (Fig. 24)

*Mordellistena yanoi* NOMURA, 1951, p. 56.

This species is very closely situated to *M. pygidialis* NOMURA from Japan, but it may be separated from the latter by the blackish elytra, the form of the maxillary palpi and of the male genitalia. Colouration of this species is dissimilar in both sexes.

Body black, in male with basal half of pronotum, pygidium and legs fulvous, in female with pronotum, scutellum, pygidium, pro- and meso-sternum, hind coxae, basal and

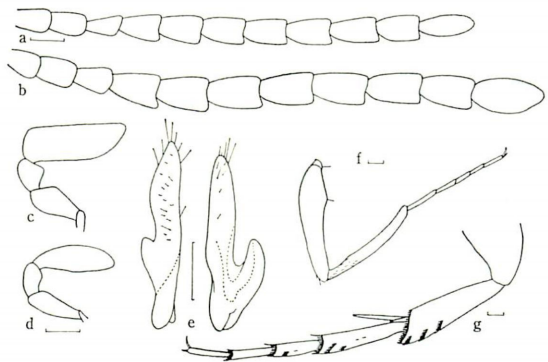


Fig. 24.

#### *Mordellochroa yanoi* (NOMURA)

- a. antenna (♂); b. ditto (♀); c. maxillary palpus (♂);  
d. ditto (♀); e. male genitalia; f. front leg (♂);  
g. hind leg.

last abdominal sternites and legs fulvous. Terminal joint of maxillary palpi boat-shaped and hollowed at apical margin in male, spindle-shaped in female. Body length: 3.9–4.2 mm. (excl. head & pygidium).

Hab.: Mt. Arisan (1 ♀, 10 Jun. 1938, leg. S. NOMURA); Mt. Tattaka (1 ♂, 24 Jun. 1965, leg. T. SHIRÔZU).

Distribution: Formosa.

## References.

- CHŪJŌ, MICHIO: 1935; Description of three new Mordellid-species from Formosa; *Sylvia*, VI, pp. 72-74.
- : 1935; A systematic catalogue of Formosan Mordellidae; I. c., VI, pp. 75-86.
- ERMISCH, KARL: 1940; Revision der ostasiatischen *Glipa*-Arten (Col. Mord.); *Ent. Blätter*, XXXVI, 6, pp. 161-173.
- : 1941; Tribus Mordellistenini (Col. Mordell.); *Mitteil. Münchner Ent. Ges.*, XXXI, 2, pp. 710-725.
- : 1950; Die Gattungen der Mordelliden der Welt; *Ent. Blätter*, 45-46, 1949-50, pp. 34-92.
- KANO, TADAO: 1930; 本邦産ハナノミの二未記録種; *Kontyū*, IV, 1, pp. 51-52.
- KŌNO, HIROMICHI: 1928; Einige Mordelliden-Arten Japans; *Ins. Matsum.*, II, pp. 147-150.
- : 1928; Die Mordelliden Japans; *Trans. Sapporo Nat. Hist. Soc.*, X, pp. 29-46.
- : 1929; Die Mordelliden Japans, Erster Nachtrag; *Ins. Matsum.*, III, pp. 83-86.
- : 1932; Die Mordelliden Japans, Dritter Nachtrag; *Trans. Sapporo Nat. Hist. Soc.*, XII, pp. 152-160.
- : 1934; H. Sauter's Formosa Ausbeute, Mordellidae; *Ins. Matsum.*, VIII, pp. 116-118.
- : 1935; Die Mordelliden Japans, Fünfter Nachtrag; *Trans. Sapporo Nat. Hist. Soc.*, XIV, pp. 123-130.
- : 1936; *Fauna Nipponica*, Vol. X, fasc. 8, No. 1, Mordellidae, pp. 1-61.
- MITONO, TAKEO: 1932; 台湾に於て沖繩松に有害なる数種の甲虫に就て; *Sylvia*, III, pp. 1-17.
- MIWA, YŪSHIRŌ: 1931; A systematic catalogue of Formosan Coleoptera; *Dep. Agr. Gov. Res. Inst. Formosa*, 55, pp. 1-359 (refr. pp. 174-175).
- NAKANE, T. & NOMURA, S.: 1950; New or little known Coleoptera from Japan and its adjacent regions, I, Mordellidae; *Trans. Kansai Ent. Soc.*, XV, 1, pp. 1-17.
- NOMURA, SIZUMU: 1951; Zur Kenntnis der Mordellistenini (Col. Mordellidae) aus Japan, Korea und Formosa; *Tōhō-Gakuhō*, No. 1, pp. 41-70.
- NOMURA, S. & KATŌ, A.: 1957; On the subgenus *Pseudomordellistena* ERMISCH from Japan, Formosa and South China (Col. Mordellidae); *Trans. Shikoku Ent. Soc.*, V, 6, pp. 77-90.
- NOMURA, SIZUMU: 1958; 日本及びその近傍のハナノミ属に就て; *Zur Kenntnis der Gattung Mordella* aus Japan und dessen Umgebung; *Tōhō-Gakuhō*, No. 7, pp. 35-58.
- : 1963; Mordellidae; *Icon. Ins. Jap.*, II, Coleoptera, pls. 124-128, pp. 247-255.
- : 1965; List of some Formosan Coleoptera collected by the member of Lep. Soc. Jap.; *Spec. Bull. Lep. Soc. Japan*, pp. 141-146 (refr. pp. 145-146).
- PIC, MAURICE: 1911; H. Sauter's Formosa-Ausbeute (Cantharidae, Lampyridae, Mordellidae, Melandryidae, Oedemeridae); *Deutsch. Ent. Nat.-Bibl.*, 11, pp. 188-189.
- : 1911; Coléoptères exotiques nouveaux ou peu connus; *L'Echange*, XXVII, pp. 191-192.
- : 1912; Coléoptères exotiques nouveaux ou peu connus; I. c., XXVIII, pp. 46-47.
- : 1926; H. Sauter's Formosa-Ausbeute (Mordellidae, Lycidae, Cantharidae); *Ent. Mitteil.*, XV, p. 67.

# ツヤマグソコガネ亜属(*Subgenus Acrossus*)の研究

中根 猛彦・益本 仁雄

## Studies on the Subgenus *Acrossus* MULSANT (Genus *Aphodius* ILLIGER)

By TAKEHIKO NAKANE & KIMIO MASUMOTO

*Aphodius* 属は本邦に約50種分布するが、その中で *Acrossus* 亜属は中～大形種を含み背面に毛を欠き、頭部が平滑でよく頬が発達し、前胸背側辺のふちどりが広い等の諸点が特徴である。また、この亜属は1～2種を除き山地性で、そのため特化が進み分類学的に興味深い。さらに幼虫の生態や形態も他の *Aphodius* と異なり、むしろ *Aphodius* 属より分離した方が良いかもしれないといわれる。\*

さて *Acrossus* 亜属は本邦に7種産し、それらの内の数種について新事実や新分布が判明しているのでここにまとめて報告する次第である。

### 1. *Aphodius (Acrossus) asahinai* NAKANE, 1951 コツヤマグソコガネ

(原色昆虫大図鑑, Vol. II, pl. 59-16. 参照)<sup>1)</sup>

従来、奈良だけが産地として知られていたが、九州にも分布することがわかった。(福岡県田代, 13-IV-1951, 三宅氏採集)

出現期は4～6月と9～10月頃の年2回で、やや日陰の鹿糞を好むという。<sup>2)</sup>

分布: 本州(奈良)・九州。

### 2. *A. (Acr.) unifasciatus* NOMURA et NAKANE, 1951 クロオビマグソコガネ

(同, pl. 59-17)

原型は黒色、上翅黄色～黄褐色で黒色の屈曲した横紋を装う特異な種である。三重県湯の山～武平峠・京都府貴船・大阪府箕面等が産地として知られていた。<sup>3)</sup>

その後中根は、関東の相模大山付近にて林長閑氏がサルノコシカケから採集した上翅がほとんど黒色の個体に対し *subsp. hayashii* NAKANE, 1955 と命名し、また紀伊山系に産する上翅が赤褐色で、判然としない幅広い暗色斑があるものに対して *subsp. kiensis* NANANE, 1960 と名付けた。

ところが最近相模大山付近で下井守氏が *subsp. hayashii* とともに *f. typica* の斑紋をもつ個体を採集し、2型併産が判明した。(神奈川県相模大山付近ヤビツ峠, 29-IV-1965)

この種は4～5月に出現し、主に人糞で採集される。

\* 三宅義一氏(未発表, 私信)によれば、幼虫の形態からみて *Colobopterus*, *Bodilus* 亜属等と共に *teges* の剛毛のソケットが本体より長く、かつ列生していること、腹端の肛上片の形態が独特で、生態的にも出現期が他より早く繁殖期も早いという、かなり特化した1群である。

分布：f. *typica*, 近畿中北部・相模大山付近・四国(剣山)・九州(彦山)；subsp. *kiiensis*, 紀伊山系；subsp. *hayashii*, 相模大山。

3. *A. (Acr.) atratus* WATERHOUSE, 1875 クロツヤマグソコガネ  
(同, pl. 59-18)

この亜属中, 最も普通に見られ, 主に平地で3~6月に出現する。<sup>4)</sup> 東京付近では荒川・江戸川\*等の沿岸で, 人・牛糞に集まるが, 馬糞でも採集された記録がある。<sup>5)</sup>

分布：本州・四国・九州。

4. *A. (Acr.) superatratus* NOMURA et NAKANE, 1951 トゲク ロツヤマグソコガネ  
(同, pl. 60-4)

前種に似るが大形で, 間室が平滑, 肩部に1対の小歯を具えている。

従来近畿特産種とされていたが, 山梨県大菩薩嶺で発見され,<sup>6)</sup>さらに神奈川県西丹沢(11-VI-1939, 渡辺氏採集・野村鎮氏所蔵)でも採集されている。

後藤氏(私信)によると, 前種と異なり, 日陰の糞から採れる由。人・牛・馬糞に集まり大菩薩では5~7月に採集される。

分布：近畿・中部(大菩薩)・関東(西丹沢)。

5. *A. (Acr.) rufipes* LINNÉ, 1758 オオツヤマグソコガネ  
(同, pl. 60-1)

邦産本亜属最大の種である。本邦産は *A. matsuzawai* YAWATA, 1942 と命名され, 後に本種の *synonym* とされたが, 阿部光典氏採集のシベリア産や, 欧州の標本と比較すると, 邦産種は, 間室がより平滑であり, 前頭の光沢がより強い等の点から亜種として区別出来るかもしれない。

高山種で, 美ヶ原・八ヶ岳蓼科付近・浅間湯ノ丸・信州峠等で採集できる。牛・馬糞に集まり7~9月が出現期らしく, 灯火にも飛来する。

分布：本州(中部地方)。

6. *A. (Acr.) japonicus* NOMURA et NAKANE, 1951 オオク ロツヤマグソコガネ  
(同, pl. 60-2)

上高地を産地として記載された大形種であるが, これには実は大小2種が含まれていた。タイプは大形の種に属し9~10mmで, 現在の分布は上高地に局限され, 人糞に集まる。

なお, 小形のもは次の種に属するものである。

分布：本州(上高地)。

7. *A. (Acr.) igai* NAKANE, 1956 イガク ロツヤマグソコガネ  
(同, pl. 60-3)

この種は前種より小形(5.5~8mm)で, 初め大台ヶ原産の個体を基にして亜種として記

\* 黒佐和義氏私信。



載された。

しかしその後、上高地・常念岳の垂直分布の研究<sup>7)</sup>から前種の小形個体が別種であり、かつ本種の範疇に入ることが判明した。

また、九州で三宅氏が採集した上翅側面に黄色紋を有する *miyakei* NAKANE, 1960 も本種の亜種と考えられるに至った。

さらに、本種に属する個体は四国剣山の他、八ヶ岳蓼科付近・奥日光・大菩薩からも採集され、ある程度地域的な変化が認められることがわかった。検討の結果、次の亜種が認められる。

- A. (*Acr.*) *igai* subsp. *igai* NAKANE 近畿(紀伊山系).  
 subsp. *miyakei* NAKANE 九州(祖母山).  
 subsp. *pseudoigai* NAKANE et MASUMOTO nov.  
 中部山岳(長野県)・関東山地(奥日光).  
 subsp. *sakurairi* NAKANE et MASUMOTO nov. 中部(山梨県大菩薩).  
 subsp. *tsurugianus* NAKANE et MASUMOTO nov. 四国(剣山).

この種は人糞の他、牛・馬・鹿糞から採集された。

なお、本研究に対し中條道夫、野村鎮、後藤光男、三宅義一、芝田太一、平井雅男、阿部光典、桜井俊一、中山正成等の諸氏より格別なご援助とご協力を賜った。深甚なる謝意を表するものである。

#### 参 考 文 献

- 1) 中根猛彦, 1963: 原色昆虫大図鑑, II (甲虫篇), 北隆館。
- 2) 谷幸三, 1966: 奈良公園の糞虫, *Nature Study*, Vol. 12, No. 5.
- 3) 後藤光男, 1955: 原色日本昆虫図鑑(上), 保育社。
- 4) 益本仁雄, 1966: 東京附近に於ける *Onthophagus* 及び *Aphodius* の出現期について, *Insect Magazine*, No. 67.
- 5) 大塚勲, 1961: 熊本県産コガネムシ類目録(1), 九州の昆虫, Vol. 8, No. 1.
- 6) 益本仁雄, 1965: トゲクワツヤマガソコガネの新産地, *Ins. Mag.*, No. 66.
- 7) K. KAMIMURA, T. NAKANE & N. KOYAMA (上村・中根・小山), 1964: "Seasonal and altitudinal distribution of beetles in Mt. Jōnen, the Japan Alps, with descriptions of new species, I", *Sci. Rep. Kyoto Pref. Univ. (Nat. Sci., Liv. Sci. & Welf. Sci.)*, No. 15, A, p. 17-38.

(本研究の一部は文部省科学研究費の援助による。)

#### Summary and descriptions of new forms

Seven Japanese species of the genus *Aphodius* ILLIGER belonging to the subgenus *Acrossus* MULSANT are enumerated and some new findings on them are presented.

##### 1. *A. (Acr.) asahinai* NAKANE

Distribution: Honshu (Nara), Kyushu (Tashiro in Fukuoka Pref.—new record).

2. *A. (Acr.) unifasciatus* NOMURA et NAKANE

subsp. *unifasciatus* NOMURA et NAKANE

Distribution: Honshu (Yunoyama-Buhei-toge, Mt. Hira, Kibune, Minoo, etc. in Kinki; Sagami-Oyama in Kanagawa Pref.—new record), Shikoku (Mt. Tsurugi), Kyushu (Mt. Hikosan).

subsp. *hayashii* NAKANE

Distribution: Honshu (Sagami-Oyama).

Recently a specimen of this form was captured at Sagami-Oyama together with a specimen of typical form.

subsp. *kiiensis* NAKANE

Distribution: Honshu (Kii Mountains).

3. *A. (Acr.) atratus* WATERHOUSE

Distribution: Honshu, Shikoku, Kyushu.

4. *A. (Acr.) superatratus* NOMURA et NAKANE

Distribution: Honshu (Buhei-toge, Kyoto, Kibune, etc. in Kinki; Mt. Daibosatsu in Yamanashi Pref.; Nishi-Tanzawa in Kanagawa Pref.).

5. *A. (Acr.) rufipes* LINNÉ

Distribution: Honshu (Utsukushigahara, Mt. Yatsugadake, Mt. Tateshina, Mt. Asama, Shinshu-toge, etc. in Nagano Pref.); Europe, Siberia, Transcaucasus, Iran; North and South America.

Japanese specimens of this species differ slightly from the European or Siberian in having more flattened intervals of elytra and more polished frons of head. YAWATA (1942) named Japanese form *A. matsuzawai*.

6. *A. (Acr.) japonicus* NOMURA et NAKANE

Distribution: Honshu (Kamikochi in Nagano Pref.).

The type series of this species contains two groups. Holotype and a few others belong to the large sized race (9–10 mm), and the rest (paratypes) are smaller (7–8 mm) and belong to a race of *A. igai* NAKANE.

7. *A. (Acr.) igai* NAKANE

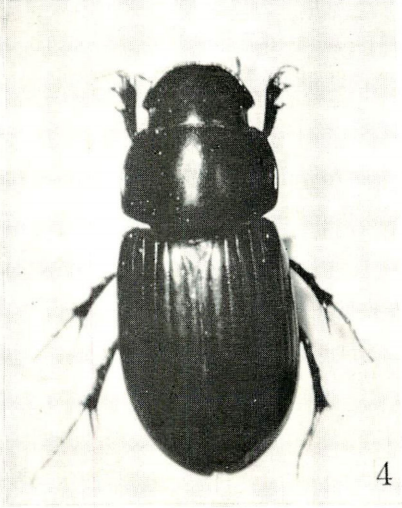
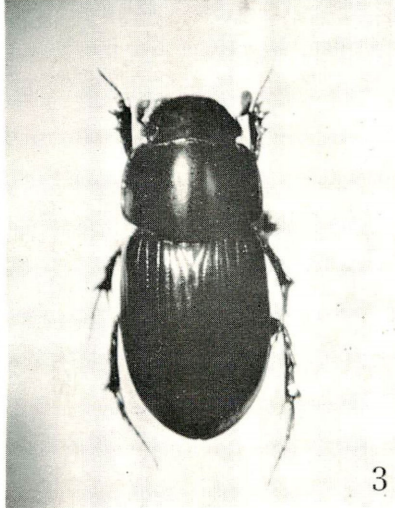
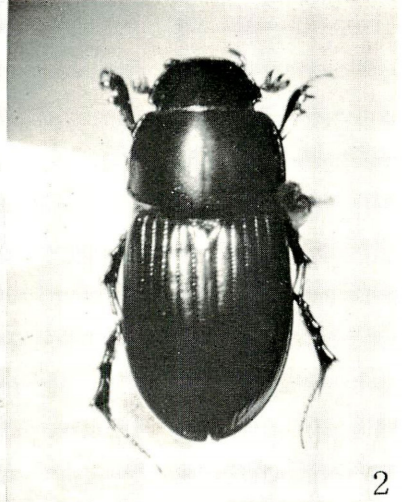
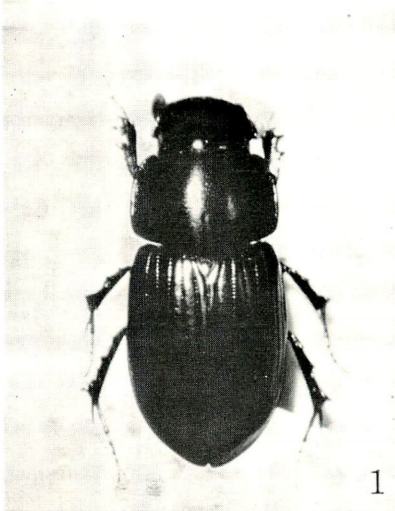
subsp. *igai* NAKANE (Pl. 2, fig. 1)

Distribution: Honshu (Mt. Ohdaigahara, Mt. Yoji, etc. in Kii Mountains).

subsp. *pseudoigai* NAKANE et MASUMOTO nov. (Pl. 2, fig. 2)

Differs from the nominate subspecies in the following characteristics: Body relatively larger (6.8–8.5 mm), upper surface more shining and the elytra usually wholly black; punctures on pronotum a little coarser; elytral striae somewhat deeper with the stria punctures a little stronger, 6th stria slightly bent upwards at base when seen from side, and the intervals a little more convex.

Holotype & allotype: Mt. Tateshina, Nagano Pref., Honshu, Japan, 21. VIII. 1965, K. MASUMOTO leg. Paratypes: 2 ex., Mt. Tateshina, Nagano Pref., Honshu, 20. VIII. 1966, K. MASUMOTO leg.; 1 ex., Mt. Yatsugadake, Nagano Pref., Honshu, 28. VII. 1963, E. KONISHI leg.; 1 ♂ 1 ♀, Inagoyu, Nagano Pref., Honshu, 16. VII. 1959, T. SHIBATA leg.;



(K. MASUMOTO photo.)



3 ♀, Kamikochi, Nagano Pref., Honshu, 21-28. VII. 1947, S. OSAWA leg. (paratypes of *A. japonicus*); 1 ex., Nikko, Tochigi Pref., Honshu, 11. VIII. 1963, K. MASUMOTO leg.

subsp. *sakuraii* NAKANE et MASUMOTO nov. (Pl. 2, fig. 3)

From the nominate form it may be distinguishable in the following points: Upper surface more shining; striae of elytra a little less deep with the stria punctures less closely set, 6th stria usually straight and horizontal at base when seen from side, and the intervals more flattened. Body length: 6.5-8.3 mm.

Holotype, allotype & 10 paratypes: Daibosatsu, Yamanashi Pref., Honshu, Japan, 17. V. 1964, S. SAKURAI leg. Paratypes: 1 ex., Daibosatsu, Yamanashi Pref., Honshu, 14. VII. 1963, S. SAKURAI leg.; 1 ex., Daibosatsu, Yamanashi Pref., Honshu, 7. VI. 1964, S. SAKURAI leg.

subsp. *tsurugianus* NAKANE et MASUMOTO nov. (Pl. 2, fig. 4)

Separable from the typical subspecies in having somewhat broader and less convex body, and wholly brownish elytra. Under side of body more or less brownish. Body length: 7-7.5 mm.

Holotype: ♀, Mt. Tsurugi, Shikoku, Japan, 12. VIII. 1953, M. HIRAI leg. Paratype: ♀, Mt. Tsurugi, Shikoku, 29. VII. 1949, M. CHŪJŌ leg. (both paratypes of *A. igai*)

subsp. *miyakei* NAKANE

Distribution: Kyushu (Mt. Sobo).

(Holotypes and some other types are in coll. NAKANE now preserved in the National Science Museum.)

#### Explanation of Plate 2.

1. *Aphodius igai* subsp. *igai* NAKANE (♂)
2. *A. igai* subsp. *pseudoigai* nov. (♂)
3. *A. igai* subsp. *sakuraii* nov. (♂)
4. *A. igai* subsp. *tsurugianus* nov. (♀)

#### 正 誤

第18巻第2号62頁の、野村英世氏の“*Pseudaolesthes kurosawai* 沖縄に産す”の短報中、本文第1行目の“キュウキュウキマダラカミキリ (新称)”は“リュウキュウキマダラカミキリ (新称)”の誤植につき訂正します。

#### 大林一夫氏の死去

当学会の創立同人および幹事であられた大林一夫氏は、かねて療養中のところ薬石効なく昭和42年4月30日永眠されました。ここに同氏の霊のご冥福をお祈りするとともに、生前同氏によせられた会員各位のご厚情に対し厚くお礼申しあげます。

日本甲虫学会

## 岩湧山で採集されたゴミムシ2種について

(岩湧山甲虫覚え書, 4)

芝 田 太 一

大阪府下岩湧山で得られたゴミムシの中で、記録的に興味があると思われる2種を報告しておく。1966年に定期的な実施された夜間灯火採集により得られた標本で、木村裕・林靖彦・酒匂清和・野村英世・伊藤建夫諸氏のご努力に深く敬意を表する。

*Harpalomimetes andrewesi* SCHAUBERGER, 1933

1♂, 7月23日; 1♀, 8月13日。

体長12mm前後、黒くて光沢強く上翅は虹状で、みたところ *Trichotichnus* 属に似ているが、ゴミムシやホシボシゴミムシと同じ仲間である *Anisodactylini* (♂の前中肢跗節の拡大部下面がブラシ状) に属する。原産地は印度支那で、1958年ではじめて田中和夫博士により日本から記録された。その時検せられた標本の大部分が茨木県下の利根川で7月と9月に採集されたのに対し、同じ資料に使用された2頭は大阪の箕面(1♂)とその近くの萱野村(1♀)の標本で、1940年4月と2月のデータが付いている。以後、関西産の本種を知らないので、今回の標本は20余年ぶりの記録ということになる。

*Stenolophus* (s. str.) *kurosai* TANAKA, 1962

1♂, 6月25日。

ナガツヤゴモクムシ *Stenolophus* (s. str.) *agonoides* BATES に似ているが、やや大きく(体長7mm前後)、前胸背側縁と上翅端の黄褐色部はより幅広く、前胸背は後方にあまり狭まらず(前者では強く後方に狭まる)、どちらかというように円まって、その点でも原記載にある通り、キベリゴモクムシ *Anoplogenus cyanascens* HOPE そっくりで、殊に前胸背の形や色合いはよく似ている。東京都と埼玉県の標本(6月~7月、一部は灯火採集)を type として発表されたもので、関西の記録は今までになかった。

## 高知県沖ノ島のハナノミダマン

伊 藤 建 夫

高知県沖ノ島の *Scraptidae* ハナノミダマン科の若干標本を野村鎮氏に同定して頂いたところ、下記の4種が同じ時期に棲息していることが判ったので、参考のため記録しておく。いずれも1965年5月1日の採集である。ご教示下さった野村鎮氏に厚くお礼申しあげる。

- |   |             |        |
|---|-------------|--------|
| 1. <i>Anaspis funagata</i> KONO         | コフナガタハナノミ   | 3 exs. |
| 2. <i>Anaspis marseuli</i> CSIKI        | クロフナガタハナノミ  | 2 exs. |
| 3. <i>Anaspis luteola</i> MARSEUL       | キイロフナガタハナノミ | 2 exs. |
| 4. <i>Anaspis michi</i> CHŪJŌ et NAKANE | ミッチフナガタハナノミ | 3 exs. |

*The Entomological Review of Japan* is published semiannually for a while. Willing to exchange with any publication relating to Entomology.

The managers of the Society are as follows:—

The managing directors; M. GOTÔ, M. HAYASHI, H. KÔNO, M. OHKURA (Kinki).

The managers; Y. KUROSAWA, T. NAKANE, S. NOMURA (Kantô), T. OHKAWA (Tôkai), M. IGA, H. ISHIDA, K. SAWADA (Kinki), S. HISAMATSU (Shikoku), S. KIMOTO (Kyûshû).

All correspondence regarding this review or the society please send to the managing editor of the society, MASAO HAYASHI. c/o No. 199, 1-3, Nishitakaai, Higashiumiyoshi, Osaka, Japan.

**The Japan Coleopterological Society**

学 会 役 員

常 任 幹 事 ; 後藤光男 · 林 匡夫 · 河野 洋 · 大倉正文

幹 事 ; 黒沢良彦 · 中根猛彦 · 野村 鎮 · 大川親雄 · 伊賀正汎 · 石田 裕 ·

沢田高平 · 久松定成 · 木元新作

昭和42年5月29日 印刷

昭和42年5月31日 発行

編 集 者 林 匡 夫

大 阪 市 東 灘 区 西 蔵 合 町 3 丁 目 1  
隣 合 住 宅 199 号

発 行 者 大 倉 正 文

神 戸 市 東 灘 区 御 影 町 天 神 山 46

印 刷 所 ナニワ印刷株式会社

大 阪 市 北 区 川 崎 町 38

発 行 所 日 本 甲 蟲 學 會

神 戸 市 東 灘 区 御 影 町 天 神 山 46

(口座番号 大阪 3 9 6 7 2)

CONTENTS 第19巻 第1号 目次

NAKANE, T. (中根猛彦); Descriptions of Few New Forms of the Genus *Aphodius* ILLIGER from Japan. —Col., Scarabaeidae— (Pl. 1) (日本産マグソコガネ属の2, 3の新型)… 1

NOMURA, S. (野村 鎮); The Mordellidae from Formosa. —Col.— (台湾のハナノミ)… 5

中根猛彦・益本仁雄 (NAKANE, T. & MASUMOTO K.); ツヤマグソコガネ亜属 (Subgenus *Acrossus*) の研究 (Studies on the Subgenus *Acrossus* MULSANT (Genus *Aphodius* ILLIGER).) —Col., Scarabaeidae— (Pl. 2) .....35

---

芝田太一; 岩湧山で採集されたゴミムシ2種について .....40

仲藤建夫; 高知県沖ノ島のハナノミダマシ .....40

---

第18回 (昭和41年度) 大会記録..... 4

---

正 誤 .....39

会 報 .....39