

Occurrence of a New Species of the Genus *Yakuhananomia* KŌNO (Mordellidae) in Central Honshu, Japan

By Masatoshi TAKAKUWA

3-16-9 Mutsuura-chō, Kanazawa-ku, Yokohama City 236

阿武隈におけるヤクハナノミ属1新種の発見

高 桑 正 敏

(Received Mar. 3, 1978 Accepted Mar. 30, 1978)

In this paper, a new mordellid beetle, *Yakuhananomia tsuyukii* sp. nov. is described on the basis of six male specimens collected at Iwaki City in central Honshu of Japan. It is most unexpected that a second species of *Yakuhananomia* occurs in the Japanese Islands besides *yakui* (KŌNO), which has been known from Hokkaido and the Southern Japanese Alps. As will be discussed later, the type-series of this new species includes two forms showing different colour patterns of elytral pubescence.

Yakuhananomia tsuyukii sp. nov. (Figs. 1, 2)

(Japanese name: Iwaki-yaku-hananomi)

Male. Body black; spurs and apical parts of each sternite reddish brown; claws more or less brown; apices of front tibiae, bases and apices of 1st segments of front tarsi and each base and apex of 3rd to last segments of antennae more or less yellowish brown.

Head densely clothed with thin fuscous pubescence, except for base and tempora which are clothed with yellow hairs. Pronotum densely clothed with deep golden-yellow pubescence, except for three very large spots consisting of dark fuscous one, the central one of which is connected with lateral ones at the antero-lateral parts (in one specimen of the typical form, the pronotum is largely blackish except for yellowish basal and lateral areas. Scutellum clothed with pale-yellow pubescence. Elytra clothed with deep golden-yellow pubescence except for humeral parts which are either sparsely clothed with short deep golden-yellow hairs or partially bare, and bearing maculations of dark fuscous pubescence as follows: a pair of spots near base, a pre-median W-shaped pattern, a post median fascia and an apical fascia, all these maculations being connected by two or four stripes (though the stripes connecting the 1st with 2nd are very thin). Pygidium densely clothed with dark fuscous pubescence, except for the apical parts which are clothed with yellow hairs. Anal sternite densely clothed with deep yellow pubescence. Ventral surface excepting anal sternite clothed with pale-yellow pubescence, though darker pubescence exists on apico-median areas of 3rd and 4th segments. Hairs on legs pale-yellow, gradually becoming deeper in colour towards apices.

Head densely and finely punctate, moderately convex, and with a small but distinct concavity at pre-vertex; eyes somewhat oval, not bearing hairs; tempora broad. Last segment of maxillary palpus semi-securiform with roundness; outer margin about a half longer than inner one, inner margin a little longer than the apical. Antennae short; 4th to 10th segments serrate and gradually decreasing in length towards apex; 1st and 2nd shaped as a thick log, 3rd as club; 3rd the longest, nearly equal in length to 1st, about 1.5 times as long as 2nd, about 1.3 times as long as 4th; last segment

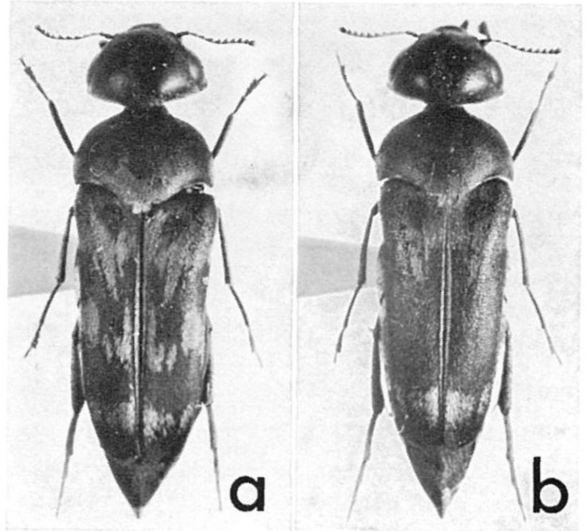


Fig. 1 *Yakuhananomia tsuyukii* sp. nov.
a: holotype b: black form

roundly oval, about 1.3 times as long as wide, a little shorter than 4th and about 1.6 times as long as 10th. Pronotum transverse, about 1.5 times as wide as long; surface densely and coarsely punctate; hind angles rounded; lateral margins arched in dorsal view, nearly straight in lateral view. Scutellum almost square, with hind angles slightly rounded. Elytra narrower than pronotum, about twice as long as wide, and narrowed posteriorly; surface punctured as follows: areas near base intricate, shoulders and the areas behind them evidently rugose, the other parts slightly or faintly rugose and covered with dense punctuations, each of which is more or less longitudinal; apex separately rounded. Pygidium very short, attenuated towards apex with slightly curving sides, almost equal in length to basal width, and somewhat longer than anal sternite, with an obtuse dorsal carina in apical half; apex narrowly truncated in dorsal view and vertically truncated in lateral view, the truncation in the latter view being about twice the length of that in the former; apex oval in cross section, more or less subsiding, and distinctly tuberculate at the upper central portion. Anal sternite narrowed posteriorly, and somewhat narrowly truncated at apex. Front tibia nearly straight in dorsal view, somewhat curved downwards in lateral view. Hind leg with only one comb just before apex of tibia; inner spur of hind tibia about 2.5 times as long as the outer one.

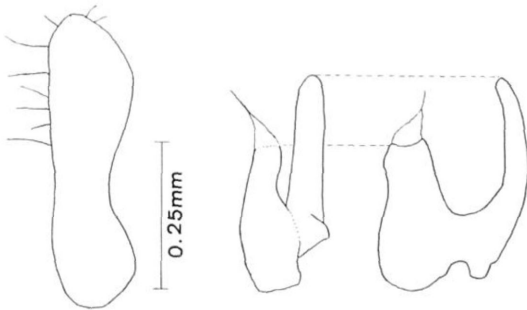


Fig. 2 Male genitalia of *Yakuhananomia tsuyukii* sp. nov.

Body length (incl. head and excl. pygidium): 7.2-7.8 mm. Elytron length: 4.5-4.8 mm.

Type-series. Holotype, ♂, Eda (about 300m

alt), Iwaki City, Fukushima Pref., Honshu, Japan, 6. VIII. 1977, S. TSUYUKI leg. (deposited in the Natn. Sci. Mus., Tokyo). Paratypes: 5♂♂, same locality as the holotype, 6-7. VIII. 1977, M. TAKAKUWA leg. (in Dr. T. NAKANE's and the author's collections)

Distribution. Iwaki Area (central Honshu)

Variation. Two different colour forms resulted from the difference in the pattern of elytral pubescence are recognized in the type-series, that is, the typical (4 specimens) and black forms (2 specimens). The latter is as follows: 1) pronotum almost wholly clothed with fuscous pubescence, only excepting basal and lateral margins, 2) elytra with a broad blackish fascia on the median area. This blackish specimens do not differ from the holotype in the male genitalia, nor in the external structures beside elytral coloration. Further, both these specimens were collected at the same locality. It is therefore clear that the two colour forms belong to the same species.

This new species is very similar to *Y. yakui* (KŌNO) from Sapporo of Hokkaido and the Akaishi Mountains of central Honshu, but can easily be distinguished from that species by the following characteristics: 1) head with a distinct concavity at pre-vertex and clothed with dark fuscous pubescence, 2) pronotum and elytra clothed with deep golden-yellow pubescence, 3) blackish spots on pronotum evidently larger, 4) blackish fascia at the post-median area of elytron clearly connected with apical one by stripes, 5) almost whole part of pygidium clothed with dark fuscous pubescence, 6) each abdominal segment without blackish spot at the apico-median area.

Acknowledgement

The author wishes to express his deep gratitude to Dr. Takehiko NAKANE and Dr. Yoshihiko KUROSAWA of the National Science Museum, Tokyo, for their continuous guidance on his study of mordellid beetles and to Dr. Shun-Ichi UÉNO of the same museum for his kindness in reading the manuscript of this paper. Thanks are also due to Mr. Shigeo TSUYUKI who first collected this new species, to Mr. Sadahiro OHMOMO who kindly guided us to that locality, and to Mr. Hirotaka MATSUKA for taking photographs inserted in this paper.

摘 要

福島県いわき産のハナノミ科ヤクハナノミ属の1新種 *Yakuhananomia tsuyukii* TAKAKUWA, sp. nov. (イワキヤクハナノミ) を記載した。日本近隣においては本属のものは北海道(札幌)および本州(南アルプス)から記録のあるヤクハナノミ *Y. yakui* (KŌNO), 1930 1種が知られていたのみで、本州の中央部からこの属のものが新たに発見されようとは思ってもみなかったことである。

本種はヤクハナノミに極似し、特に上翅の紋の出方は

まったくと言ってよいほど同一のパターンであるが、黒化は著しく、また微毛の色が異なることや頭頂前方に1つの陥没点が認められることから、区別することは難しくはない。

なお、本種は斑紋上から2つの型に分けられ、type-series 中には4頭の原型と2頭の黒化型が含まれている。黒化型は原型と同一地点で得られたこと、および♂ genitalia や斑紋以外の外部形態にまったく差が認められないことから、原型と同一の種類であることは明らかである。

「南西諸島におけるアトキリゴミムシ類の知見」の訂正

深町 宗通

筆者は先に、本誌 Vol. 2, No. 2, pp. 23-24 において、上記表題の報告を行ったが、その際、同報告中のアトキリゴミムシ類の種名の同定について若干の訂正を必要とするものを含んでいたため、ここに誤りを訂正しておく。

10. *Endynomena lewisii* BATES メダカアトキリゴミムシのうち、石垣島産を、*Endynomena* sp. メダカアトキリゴミムシに近似の1種に。

石垣島産の個体が徳之島以北の個体とかなり異なっていることはすでに述べたが、別種として扱った方がよいと思われる。なお、沖縄本島産の個体も石垣島産と同じものである。

16. *Lebia retrofasciata* MOTSCHULSKY ジュウジアトキリゴミムシを *Lebia* sp. ジュウジアトキリゴミムシ

シに近似の1種に。

日本未記録種である。台湾にも産する。

17. *Apristus grandis* ANDREWES スジミズアトキリゴミムシを *Apristus* sp. スジミズアトキリゴミムシに近似の1種に。

A. grandis に酷似するが別種である。

なお、2. の *Hexagonia* sp. クロモンヒラナガゴミムシに近似の1種は、同年4月に土生博士によって *H. cyclops* (MATSUMURA) ヒトツメヒラナガゴミムシとして発表された*)。

*) HABU, A. (1975): Carabidae taken from the Ryukyus, Japan, mainly by Mr. H. HASEGAWA during February and March in 1973 (Col: Carabidae). Trans. Shikoku Ent. Soc., 12(3/4): 1-19.

各地昆虫同好会誌・学会誌の取扱いを始めました

「COENONYMPHA」「Celastrina」「東北昆虫」「東北昆虫研究」「インセクト」「虫の国」「ルリボシ」「TERRITORY」「羽化」「三多摩虫界速報」「多摩虫」「甲虫ニュース」「ELYTRA」「神奈川虫報」「山梨の昆虫」「誘蛾灯」「AMICA」「とっくりばち」「まつむし」「長野蛾報」「駿河の昆虫」「佳香蝶」「ひらくら」「KINOKUNI」「CRUDE」「MDK news」「やどりが」「PARNASSIUS」「すかしば」「広島虫の会々報」「佐賀の昆虫」「MIKADO」「こがねむし」「SATSUMA」など、現在70タイトルの昆虫誌が、必要な号のみお買上げいただけます。更に毎月5タイトル位ずつ取扱いを増して行く予定です。

詳しい内容は小社リストをご請求下さい(年5~6回発行 毎号28頁)。

ご注文はハガキに署名捺印の上(18才未満は保護者印)ご注文下さい。直ちにお送りいたします。代金は到着後5日以内にご送金下さい。送料は2冊以上になると安くなります。又1回のご注文に¥200の書留料を加算いたします(但し前金不用)

お近くの方は小社(小田急経堂駅前)へ!
昆虫関係図書常時1,000タイトル以上在庫
定休:水曜・祝日/平日10~19時・日曜日13~17時
JCBカード加盟店 在庫リスト(3回分¥200)

昆虫洋書・地方図書は専門の小社へ
東京通販サービス社

〒156 東京・千歳郵便局私書箱33号
小田急経堂ビル12F 1221号
☎(03)426-6012 郵便振替 東京0-73, 156