

**A New Longicorn-Beetle Related to *Molorchus minor*  
(LINNÉ) from Central Japan (Cerambycidae)**

**By Masatoshi TAKAKUWA\* and Kiyohiko IKEDA\*\***

\* Mutsuura 3-16-9, Kanazawa-ku, Yokohama City 236

\*\* Department of Biology, Yamanashi University, Takeda 4-4-37, Kofu City 400

中央日本におけるシラホシヒゲナガコバネカミキリに近似の1新種  
高桑正敏・池田清彦

*Molorchus minor* (LINNÉ) is a cerambycid beetle widely distributed in the Palearctic Region, and in Japan, has been known from Hokkaido and Honshu. Though all the specimens from Honshu have hitherto been treated as subsp. *fuscus* HAYASHI, our detailed investigation revealed that they include two different species. Needless to say, one of them is *M. minor fuscus* HAYASHI but the other one is a new species to be described in this paper.

***Molorchus pinivora* sp. nov.**

(Figs. 1·A, 2·1a, 1b)

Male. Body black; mouth-parts except for apical halves of mandibles, antennae, basal two-thirds of elytra and legs except for corpulent parts of all femora reddish brown to blackish red; a pair of oblique carinae behind middle of elytra pale ivory-yellow.

Head clothed with long, erect, yellow pubescence. Antennal segments 1st to 6th with long, erect, golden-yellow hairs which gradually become sparser towards 6th; 7th to terminal segments each with a pair of long hairs or none. Pronotum rather sparsely clothed with long, erect or suberect, golden-yellow pubescence; disc densely clothed with white pubescence behind anterior margin and just before base, the former of which disappears at middle. Scutellum densely clothed with whitish pubescence. Elytra somewhat sparsely clothed with golden-yellow pubescence; basal halves very sparsely with long, erect, golden-yellow hairs. Underside of thorax sparsely clothed with long, erect, whitish pubescence; metasternum rather densely clothed with short, whitish yellow pubescence; apical parts of meso- and metepimera densely clothed with whitish pubescence. Abdomen sparsely clothed with long, semi-erect, whitish pubescence on anterior part, and long, semi-erect, golden-yellow one on posterior part; apical part of each sternite except for

5th segment densely clothed with white pubescence, which disappears at each middle. Legs pubescent, slightly sparser than in *M. minor*.

Frons densely punctate, but irregularly punctate or irregularly rugose on forehead; vertex longitudinally rugose with sparse punctures. Antennae 12-segmented, thicker than in *M. minor*, less than twice as long as body; relative lengths of antennal segments more or less variable, in holotype as follows: 0.74 : 0.20 : 1.39 : 1.29 : 1.48 : 1.26 : 1.16 : 1.13 : 1.10 : 1.00 : 1.00 : 1.06; scape the thickest, each of 2nd to 6th segments cylindrical with apex more or less corpulent, each of 7th to 11th segments cylindrical, terminal segment arcuate. Pronotum wider than head, about 1.3-1.4 times as long as wide, widest a little behind middle; sides usually subparallel from apex to apical one-fifth or two-fifths, rounded or obtusely angulate near middle, constricted before base; disc somewhat depressed, rather irregularly, coarsely, and densely punctate or more or less longitudinally rugose, excepting a pair of vague callosities on apical one-third where the longitudinal rugosity is very fine. Scutellum tongue-shaped, longer than wide. Elytra wider than prothorax, not attaining to apical margin of 1st abdominal segment, about 1.25-1.4 times as long as wide, about 1.2-1.4 times as long as prothorax, widest near base; humeral angles rounded, projecting forwards; sides subparallel from base to apical two-fifths, then slightly narrowed towards apex; disc uneven, coarsely and deeply punctate, though hardly punctured on a pair of oblique carinae behind middle; apex separately rounded. Abdominal sternites very feebly and transversely rugulose, and shallowly and sparsely punctate; 3rd sternite broadest, about 1.2 times as wide as apical margin of 1st, about 2.2 times as wide as apical margin of 5th; 5th sternite with a weak longi-

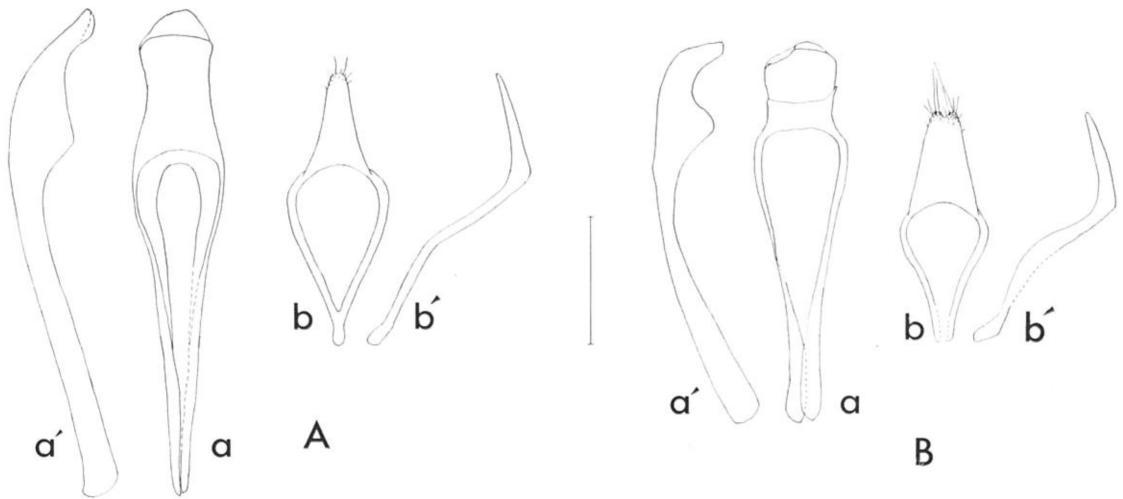
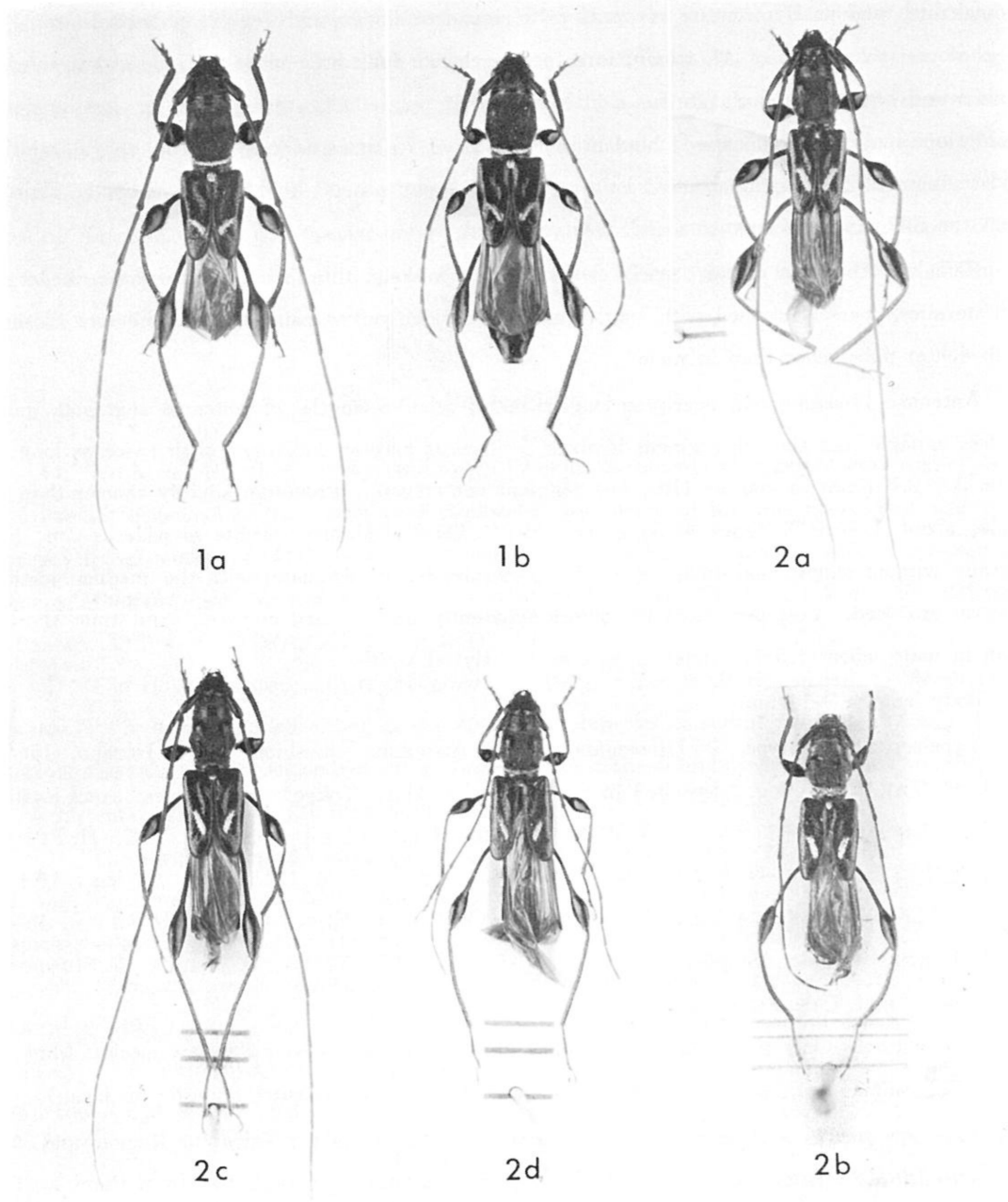


Fig. 1 Male genitalia

A: *Molorchus pinivora* sp. nov., B: *M. minor* (LINNÉ) from Hokkaido, a: penis, a': ditto (lateral view), b: tegmen, b': ditto (lateral view) (scale: 0.5 mm)



**Fig. 2**

1a. *Molorchus pinivora* sp. nov., ♂ (holotype) 1b. ditto, ♀ 2a. *Molorchus minor* LINNÉ, ♂ (Hokkaido)  
2b. ditto, ♀ (Japanese Northern Alps) 2c. ditto, ♂ (Japanese Southern Alps) 2d. ditto, ♀ (Japanese Southern Alps)

摘 要

本州産のカミキリムシ科の1新種 *Molorchus pinivora* TAKAKUWA et IKEDA, sp. nov. (オニヒゲナガコバネカミキリ) を記載した。この種はシラホシヒゲナガコバネカミキリ *M. minor* (LINNÉ) によく似るが、はるかに頑強な体つきと、上翅の斜紋の傾きの差とから区別は難しくない。現在までのところ、福島県南会津と長野県下伊那郡戸台の2ヶ所のみから知られ、アカマツとヒメコマツのケンタ材からよく採集される他、モミ属の1種の伐採木からも見出される。

なお、後記として次の点を補足しておいた。

1) この仲間の属名は、タイプ種の指定の問題をめぐって *Molorchus* FABRICIUS を用いるか *Necydalis* LINNÉ を用いるか意見が分れているが、ここでは通常使用されている前者を採用しておいた。*Molorchus* はまた、いくつかの亜属が提唱されているが、その亜属の取

扱いをめぐっても不確かなままであるため、ここでは亜属を採用しなかった。

2) また、シラホシヒゲナガコバネカミキリについては北海道産の個体の亜種名は subsp. *fuscus* HAYASHI を用いるのが妥当と思われる(ただし、この亜種と原亜種とは上翅の色彩のわずかな差しかない)。

3) 南アルプス産の個体は、早の触角が12節なことから、北アルプス高地(subsp. *fuscus* の原産地)産や北海道産、大陸産のものとは明らかに異なっている。

4) 鹿児島県城山からは HAYASHI (1956) による原亜種の記録があるが、この種の分布状態から判断すればその地に産することは考えにくいので、第二の記録がなされるまでは、この種の分布から九州を除外しておくべきである。

## より高度な蒐集・研究は文献から!

フランス版 昆虫分類図説(甲虫篇)  
ICONOGRAPHIE ENTOMOLOGIQUE — Coleopteres—

A 4 版 各 ¥ 2,900 (〒160)

- 1: CARABIDAE *Chrysocarabus auronitens* (By J. Darnaud). -1977- 6 pp. 2 colour pls.
- 2: CARABIDAE *Chrysocarabus rutilans*. (By J. Darnaud, M. Lecumberry, R. Blanc). -1978- 9 pp. 2 colour pls.
- 3: CARABIDAE *Chrysocarabus auronitens* (By Darnaud, Lecumberry & Blanc). -1978- 9 pp. 2 colour pls.
- 4: CARABIDAE *Chrysocarabus solieri* (By Darnaud, Lecumberry & Blanc). -1978- 10pp. 2 colour pls.
- 5: CARABIDAE *Coptolabrus* (By Darnaud, Lecumberry & Blanc) -1978- 8 pp. 2 colour pls.
- 6: CETONIIDAE - Faune de France - (By Darnaud, Lecumberry & Blanc) -1978- 10pp. 2 colour pls.
- 7: CARABIDAE *Chrysocarabus lineatus* (By Darnaud, Lecumberry & Blanc) -1979- 10pp. 2 colour pls.
- 8: CARABIDAE *Megodontus purpurascens* (By Darnaud, Lecumberry & Blanc) -1979- 12pp. 2 colour pls.
- 9: SCARABAEIDAE *Scarabaeus* (s.l.) & Voisins Région Paléarctique occidentale (By Y. Cambefort, M. Lecumberry & R. Blanc). -1979- 8 pp. 2 pls.

フランスで個人出版(限定版)された分類図説。ページ数の割に大変高い出版物ですが、カラー印刷は素晴らしい上りです。今のところオサムシとコガネムシですが、毎年5~6冊のペースで続刊されます。殊にオサムシの研究者には見のがせない文献です。(注文コード IE-101~109)

ご注文はハガキに署名捺印の上(満18才未満は保護者印)ご注文下さい。直ちにお送りいたします。代金は到着後5日以内にご送金下さい。送料は2冊以上になると安くなります。

お近くの方は小社(小田急経堂駅前)へ  
昆虫関係図書  
當時4,000タイトル以上在庫 水曜祭日定休・平日10~19時・  
日曜13~17時 JCCカード加盟店 在庫リスト(3回分 ¥200)

昆虫洋書・地方図書は専門の小社へ  
**東京通販サービス社**  
〒156 東京千歳郵便局私書箱33号 小田急経堂ビル12F 1221号  
☎ (03) 426-6012 郵便振替 東京0-73156