

## Description of a New Species of *Rhyssemus* (Scarabaeidae) from the Philippines

By Kimio MASUMOTO

890-30, Kamigōchō, Totsuka-ku, Yokohama City 247

フィリピン産 *Rhyssemus* 属の1新種  
益本 仁雄

### *Rhyssemus philippineus* sp. nov. (Fig. 1)

(Japanese name: Fuirippin-kokeshi-magusokogane)

Black, with outer margin of clypeus and legs dark reddish brown, antennae and palpi yellowish brown. Upper surface rather strongly shining. Elongate, subparallel, strongly convex.

Head about 1.5 times as broad as long, strongly convex forward, almost vertically sloped in front, with clypeus rather acutely angulate and slightly reflex above at each side of median wide V-shaped emargination, sides arcuate, genae moderately rounded, vertex with two oblique-convergent protuberances, rather densely tuberculate throughout, tubercles gradually smaller and rugosely surface-flattened to base of head.

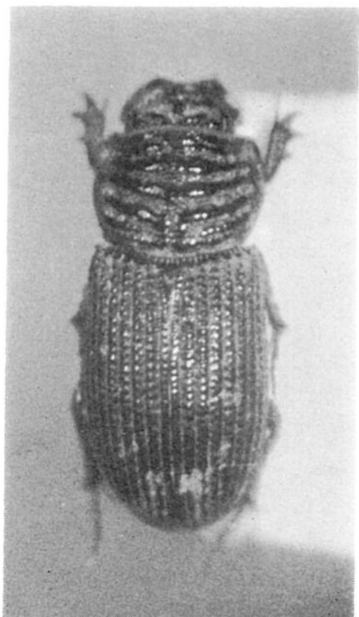


Fig. 1 *Rhyssemus philippineus*  
sp. nov. (holotype)

Pronotum 1.3 times as broad as long, approximately half as long as elytra, with sides moderately arcuate and obtusely crenate, fringed with long yellow setae, basal ones very short opposite 4th and 5th elytral intervals, then increasingly and noticeably long opposite scutellum, discal surface with six transverse shiny ridges, sparsely and very finely punctate, 1st along anterior margin obsolete and except for central part divided into two mean ridges by narrow transverse furrow, 2nd to 4th very conspicuous, 5th and 6th coarsely and coalescently tuberculate, median longitudinal furrow interrupting 4th to 6th, 4th bent back along median furrow to join 6th and thus enclosing 5th between them, transverse furrows between ridges densely and coarsely, often rugosely punctate, furrows between 2nd to 4th ridges noticeably wider, pair of lateral swellings posterior to wide depressed area in anterior angles sparsely

tuberculate, front angles moderately produced and their tips narrowly rounded, hind ones feebly sinuate, front margin slightly arcuate, hind one broadly rounded with marginal groove. Scutellum small and triangular.

Elytra convex, with remarkable humeral teeth, striae deep and fine, strial punctures almost unnoticed, sutural interval convex with outer half obliquely notched, 2nd to 8th with inner-small, outer-large tubercles in rows which often coalesce with each other so seen as somewhat obliquely and deformedly oblong in anterior half of elytra, posterior and 9th to 10th simply dentate.

Mesosternum closely and rather rugosely punctate, metasternum sparsely granulate at sides, smooth and shiny in rest, 3rd to 5th abdominal sternites with obsolete serrate transverse median line. Middle and hind femora broad, first tarsal segment of hind legs a little longer than spur, subequal to length of three followings combined.

Length: 2.8-3.2 mm.

Holotype: ♂. Cebu City, Cebu Is. The Philippines, 22 April 1980, K. MASUMOTO leg.

Paratypes: 1♀, Makati, Metro-Manila, Luzon Is. 21, June 1980; 1♂, ditto 22, June 1980, K. MASUMOTO leg.

\* Holotype may be deposited in the National Science Museum of Japan.

This new species should be easily separated from both *R. malasiacus* LANSBERG and *R. tonkineus* BALTHASAR in having different arrangement of ridges on pronotum and the peculiar shape of tubercles in elytral intervals.

#### 摘 要

フィリピンのセブ島およびルソン島より採集された *Rhyssenus* 属が新種であった。既知種 *R. tokineus*

BALTHASAR に近い種と思われるが、前胸背の横隆起の数と形状。上翅間室の瘤列がきわめて特徴的である。