

## A New Rhipiphorid Beetle (Coleoptera, Rhipiphoridae) from Malaysia

Masao TÔYAMA

4-16, Koshien 6, Nishinomiya, Hyogo, 663 Japan

**Abstract** A new rhipiphorid beetle, *Ohananomia malayana* gen. et sp. nov., is described from West Malaysia. It belongs to the subfamily Hemirhipidiinae.

The rhipiphorid subfamily Hemirhipidiinae is mainly distributed in Australia. In the Oriental Region, only four species have been known from Japan and Taiwan.

Through the courtesy of Mr. Toshio TOMITA, I had an opportunity to examine a single specimen of a strange rhipiphorid beetle from West Malaysia. After my close examination, it became evident that the beetle should be placed in an undescribed genus belonging to the subfamily Hemirhipidiinae. In this paper, I am going to describe it under the new name of *Ohananomia malayana* gen. et sp. nov. The holotype is deposited in the National Science Museum (Nat. Hist.), Tokyo.

Before going further, I wish to express my sincere gratitude to Dr. Yoshihiko KUROSAWA of the National Science Museum (Nat. Hist.), Tokyo, for his constant guidance, and to Dr. Shun-Ichi UÉNO of the same museum for his critical reading of the original manuscript. I am also indebted to Mr. Toshio TOMITA for his kind offer of the material.

### Genus *Ohananomia* gen. nov.

Type species: *Ohananomia malayana* sp. nov.

Body elongate, subparallel.

Head slightly bisinuate at base in dorsal aspect; occiput produced over apex of pronotum; clypeal suture absent; clypeus transverse; eyes distinctly convergent above in frontal aspect, rather densely pubescent, each divided into a smaller upper and a larger lower parts by a strong inferior emargination, the two parts being connected by narrow piece; antennal cavities small and simple; antennae arisen just along the inferior rims of lower eye parts, eleven-segmented, pectinate from the fourth segment; mouth parts perfect. Pronotum distinctly convergent anteriorly; lateral ridges short; disc convex. Scutellum subquadrate. Elytra short, not separated from each other. Prosternum with the anterior margin roundly emarginate; prosternal process narrowly ridged between anterior coxae, which are closed by a very narrow sclerotized band. Legs slender; anterior and middle tibiae without spine at apices; posterior tibiae with a spine at each apex; tarsal segments all cylindrical. Claws simply cleft, distinctly

pectinate. Hind wing without radial cell; vein  $R_2$  visible.

*Remarks.* The present genus is classified into the subfamily Hemirhipidiinae, and is allied to the genus *Nephrites* SHUCKARD, 1838, but can be easily distinguished from it by the following characteristics: 1) scutellum flattened, without any projection, while in *Nephrites*, it bears upper and lower small projections; 2) middle tibia without spine at apex, while in *Nephrites*, it has a distinct spine, 3) claws distinctly pectinate, while in *Nephrites*, they are not pectinate; 4) vein  $R_2$  present on hind wing, instead of being absent.

*Ohananomia malayana* sp. nov.

(Fig. 1)

Body elongate, subparallel; head reddish testaceous, though the parts between upper and lower lobes of eyes black; pronotum and elytra entirely black and lustrous; prosternum reddish testaceous; meso- and metasterna and abdomen entirely black; antennae black except for reddish testaceous basal segments; legs black except for reddish testaceous anterior and middle femora.

Head slightly bisinuate at base in dorsal aspect; occiput produced over apex of pronotum; frons evenly convex, densely and finely punctate, and clothed with fine erect hairs; clypeus transverse, densely punctate, with the anterior margin truncate; eyes distinctly convergent above in frontal aspect, rather densely pubescent, divided into a smaller upper and a larger lower parts by a strong inferior emargination, the two parts being connected by narrow piece; antennal cavities small and simple; antennae eleven-segmented, distinctly pectinate from the fourth segment, with the first segment curved, distinctly expanded apically, about 1.5 times as long as the

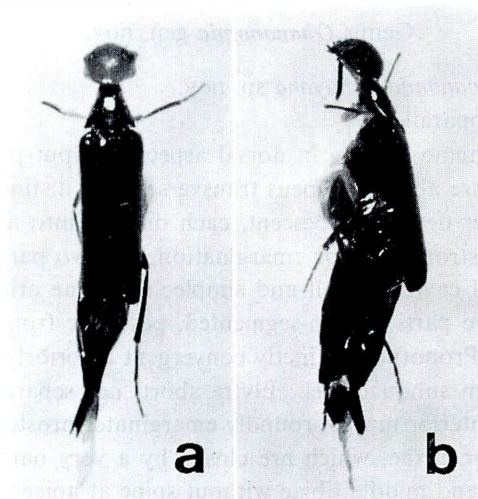


Fig. 1. *Ohananomia malayana* sp. nov. (holotype); a, dorsal view; b, lateral view.

following two united, the second short, subglobular, the third slightly longer than the second, the fourth subtriangular, about as long as the second and third united, and distal ones short and distinctly pectinate.

Pronotum slightly narrower than elytra at base, distinctly convergent anteriorly; sides evenly expanded posteriorly, though very slightly sinuate just behind anterior angles; basal margin about twice as wide as the anterior, slightly bisinuate, with the median lobe very broad, and truncate at the middle; lateral ridges extending from posterior angles to the posterior third; disc convex, obsolete depressed medially, transversely grooved along base; surface evenly and finely punctate, densely clothed with blackish semierect hairs. Scutellum subquadrate, arcuately rounded at apex, distinctly and broadly depressed in the middle posteriorly.

Elytra short, reaching the fourth abdominal tergite, about 3.7 times as long as pronotum; sides subparallel, separately rounded at the tips; disc almost convex, with an obsolete basal depression; surface very finely punctate and pubescent.

Prosternum with the anterior margin roundly emarginate; prosternal process very narrowly ridged between anterior coxae, which are closed by a narrow sclerotized band. Mesosternum convex. Metasternum evenly convex, without median groove. Abdomen with the last ventral segment rounded at apex, without any depression. Legs slender; anterior and middle tibiae without spine at apices; posterior tibiae with a spine at each apex; tarsal segments all cylindrical. Claws simply cleft, distinctly pectinate.

Length: 8.6 mm; width: 1.2 mm.

Holotype: ♀, Top of Mt. Jasar, Cameron Highlands, W. Malaysia, 1. V. 1984, T. TOMITA lgt.

*Remarks.* This new species is easily distinguished from the other relatives by the generic characteristics.

## 摘 要

オオハナノミ科ホソコバネオオハナノミ亜科に属する1新属新種 *Ohananomia malayana* gen. et sp. nov. をマレー半島より記載した。

## References

- HELLER, K. M., 1920. Neue Rhipiphoriden (Col.). *Tijdsch. Ent.*, **63**: 170–175.
- SELANDER, R. B., 1956. The systematic position of the genus *Nephrites* and the phylogenetic relationships of the higher groups of Rhipiphoridae (Coleoptera). *Ann. ent. Soc. America*, **50**: 88–103.
- SHUCKARD, W. E., 1838. Description of some new genera of Coleoptera in the author's collection. *Ent. month. Mag.*, **5**: 505–513.
- TÔYAMA, M., & T. HATAYAMA, 1985. Occurrence of the rhipiphorid subfamily Hemirhipidiinae in Japan and Taiwan (Coleoptera, Rhipiphoridae). *Gekkan Mushi, Tokyo*, (176): 18–24.
- VIANA, M. J., 1971. Micholaeminae nueva subfamilia de Ripiphoridae y *Micholaemus gerstaeckeri* nuevo genero y especie de la Republica Argentina (Insecta, Coleoptera). *Rev. Soc. ent. Arg.*, **33**: 69–76.