

Some New Rutelid Beetles from Taiwan (Coleoptera, Scarabaeidae)

Hirokazu KOBAYASHI

3-16, Kamishakujii-minamichô, Nerima-ku, Tokyo, 177 Japan

Abstract Eight new species of rutelid beetles are described from Taiwan. One of them belongs to *Callistethus*, five to *Anomala*, and the remaining two to *Blitopertha*.

In this paper the author will describe eight new rutelid beetles from Taiwan. They belong to the genera *Callistethus* BLANCHARD, 1851, *Anomala* SAMOUELLE, 1819, and *Blitopertha* REITTER, 1903.

The type series of the species to be designated in the present study are preserved in the author's collection, excepting one of the paratypes of *Callistethus formosanus*, which is preserved in the National Science Museum (Nat. Hist.), Tokyo.

Before going further, the author wishes to express his sincere gratitude to Dr. Yoshihiko KUROSAWA of the National Science Museum (Nat. Hist.), Tokyo, for his helpful suggestions, and to Dr. Wataru SUZUKI of the Laboratory of Entomology, Tokyo University of Agriculture, Tokyo, as well as to Messrs. K. AKIYAMA, S. SAITO, S. SAKAINO, T. SENOO, K. ONO, J. LO and W. CHEN for their kind offer of materials. The author also wishes to express his cordial thanks to Dr. S.-I. UÉNO of the National Science Museum (Nat. Hist.), Tokyo, and Mr. N. J. KEALEY of the Shôin Senior High School, Tokyo, for reading through the manuscript.

Callistethus formosanus H. KOBAYASHI, sp. nov.

(Figs. 1 a-b, 10)

Ventral surface with brilliant greenish lustre and with golden reflection; dorsal surface with golden yellow lustre, each side of pronotum with an oblong greenish maculation; antennae yellowish brown.

Clypeus 2.2-2.3 times as broad as its length, faintly and rather sparsely punctate; anterior margin almost straight and strongly reflexed, anterior angles somewhat rounded. Head sparsely and shallowly punctate, with a few long setae at the inner side of eye. Fronto-clypeal suture gently rounded. Antennae 9-jointed, club in male of the same length as the footstalk, evidently shorter in female.

Pronotum 2.2 times as broad as its length, very faintly and sparsely punctate, with a longitudinal sulcus before the middle; lateral margins curved before the middle, narrowing towards the front, almost straight in the rear, completely margined; anterior angles acute in male, dully produced in female, posterior angles subrectangular; an-

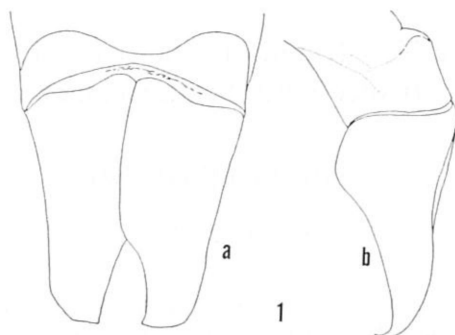


Fig. 1. Male genitalia of *Callistethus formosanus* sp. nov.; a, dorsal view; b, lateral view.

terior margin somewhat widely bordered. Scutellum widely triangular, apical angle somewhat rounded, very faintly punctate or impunctate. Each elytron with a sutural and two discal costae, most of inner intervals very shallowly punctate, other intervals roughly and rather coarsely punctate. Epipleura stout and somewhat wide behind the humeral callus, reaching near apical callus; marginal membrane narrow, starting from near anterior margin of hind coxa. Lateral margins provided with rather long setae.

Pygidium moderately convex in male, strongly so in female, with very faint punctures and rather long, yellowish hairs on apical half. Metasternum clothed with long tawny hairs. Metasternal process long, acute and inwardly curved. Abdominal sternites minutely and moderately punctate at the sides, rather sparsely so at the middle and with irregular rows of tawny hairs (rather dense on both sides), with a rather wide, longitudinal groove in the middle. Anterior tibiae bidentate, apical tooth short and acuminate in male, blunt in female. Posterior femora almost impunctate, about 2.7 times as long as its breadth. Length: 13.5–14.5 mm; breadth: 7–8.5 mm.

Holotype: ♂, near Liukuei, Kaohsiung Hsien, 24 v, 1984, W. CHEN leg.

Paratypes: 1 ♀, Mt. Lalashan, Taoyuan Hsien, 21 vii, 1978, W. SUZUKI leg.; 1 ♂, Tattaka, 1 v, 1973, H. YOKOYAMA leg.; 6 ♂♂, 3 ♀♀, Bihiuh, Hualien Hsien, 2 vii, 1986, J. Lo leg.; 4 ♂♂, 2 ♀♀, Meishan~Tienchi, Kaohsiung Hsien, 29 vi, 1986, K. BABA leg.

***Anomala nigrolineata* H. KOBAYASHI, sp. nov.**

(Figs. 2 a–b, 11)

Body reddish brown to dark reddish brown; head blackish brown or black; pronotum of the same color as head except along lateral margins (middle of margin sometimes reddish or yellowish brown), lateral margins reddish or yellowish brown; scutellum black or blackish brown; each elytron reddish or yellowish brown, with a longitudinal black maculation extending from shoulder to near apical callus, suture black and narrow.

Clypeus subtrapezoidal, about 2.5 times as broad as its length, anterior angles rounded, anterior and lateral margins evidently reflexed and bordered, very densely

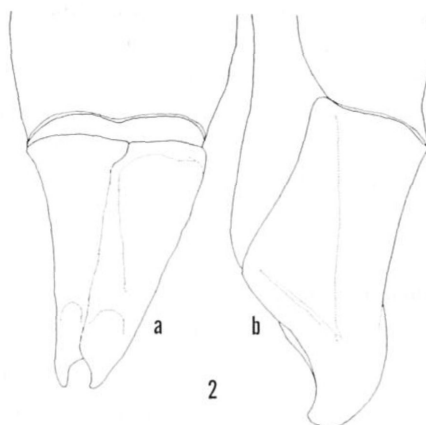


Fig. 2. Male genitalia of *Anomala nigrolineata* sp. nov.; a, dorsal view; b, lateral view.

and somewhat rugosely punctate, feebly elevated at the middle. Frons very densely and rugosely punctate; vertex densely punctate. Eyes large and prominent in male, rather small and not prominent in female. Antennal club in male almost as long as footstalk, shorter in female.

Pronotum 1.7–1.8 times as broad as its length, rather densely punctate, anterior margin rather widely bordered, lateral and posterior margins completely bordered, with a slightly longitudinal sulcus and a faint hollow near the middle of lateral margin; lateral margins curved near the middle, gently narrowed to front, almost subparallel behind and slightly sinuate before posterior angles; anterior angles produced, posterior ones subrectangular. Scutellum broadly triangular, apical angle rounded, evenly punctate. Each elytron with very fine and rather dense punctures intermixed all over, coarse punctures in rows, less coarse and sparse ones on each interval. Epipleura narrow, reaching behind apical callus, marginal membrane narrow, starting from near the anterior margin of hind coxa.

Pygidium gently curved at the apical margin, feebly convex in male, more distinctly so in female, rather densely punctate, with sparse hairs near the apical margin. Metasternum, middle femora and hind coxa provided with long tawny hairs. Abdominal sternites rather densely punctate, bearing scattered hairs on each side. Anterior tibiae bidentate. Posterior femora elongate, about 3.7 times as long as its breadth. Middle and posterior tibiae elliptical, abruptly becoming broader near the middle. Inner claw of anterior tarsus and outer one of middle tarsus subparallel and cleft at each apex. Length: 12–15.5 mm; breadth: 7–8 mm.

Holotype: ♂, Tienchih, Kaohsiung Hsien, 11 v, 1978, H. SAKAINO leg.

Paratypes: 5 ♂, 9 ♀♀, same data as the holotype; 4 ♂♂, 6 ♀♀, same locality as the holotype, 3 v, 1983, S. SAITO leg.; 2 ♂♂, 1 ♀, near Taoyuan, Kaohsiung Hsien, 10 iv, 1976, K. USHIJIMA leg.; 4 ♂♂, Senpei, Kaohsiung Hsien, 28 iv, 1985, S. SAITO leg.; 1 ♀, Nanshanchi, Nantou Hsien, 1 iv, 1976, H. SAKAINO leg.; 3 ♂, near Liukuei,

Kaohsiung Hsien, 24 v, 1984, W. CHEN leg.; 1 ♂, Guandaoshan, Nantou Hsien, 24 iv, 1984, J. LO leg.; 1 ♂, Lushan, Nantou Hsien, 4 v, 1983, S. SAITO leg.; 6 ♂♂, 1 ♀, Tienchih, Kaohsiung Hsien, 28 iv, 1986, K. BABA leg.; 3 ♂♂, 5 ♀♀, Shaping, Kaohsiung Hsien, 5~10 iv, 1986, K. BABA leg.; 1 ♂, 2 ♀♀, Liukuei, Kaohsiung Hsien, 5~10 iv, 1986, K. BABA leg.; 2 ♂♂, 1 ♀, Shinanshan, Kaohsiung Hsien, 4 v, 1986, K. BABA leg.; 1 ♂, 5 ♀♀, Fengkangshan, Kaohsiung Hsien, 30 iv, 1986, K. BABA leg.; 5 ♂♂, Shyckshan, Kaohsiung Hsien, 25 iv, 1986, K. BABA leg.

Anomala babai H. KOBAYASHI, sp. nov.

(Figs. 3 a-b, 12)

Body yellowish brown to pale yellowish brown with rather strong lustre; vertex and pronotum, except for lateral margins and scutellum, grass green to dark green, area surrounding scutellum and V-shaped maculation of elytra which may be connected with the scutellar maculation, dark green or reddish lustred green; tibiae and tarsi reddish brown, antennae dark reddish brown.

Clypeus semicircular, anterior margin somewhat straight, densely and somewhat rugosely punctate, margins reflexed and bordered. Frons densely punctate, vertex rather sparsely and minutely punctate, with several long hairs at the inner sides of eyes. Antennal club as long as footstalk in male, evidently shorter than that in female. Fronto-clypeal suture gently but clearly arched.

Pronotum rather sparsely and finely punctate, with a faint longitudinal sulcus in the middle, a small fovea in the middle and near to each lateral margin, lateral margin angularly curved just before the middle in male, roundly curved before the middle in female, anterior angles produced but not acute, posterior angles blunt; anterior and

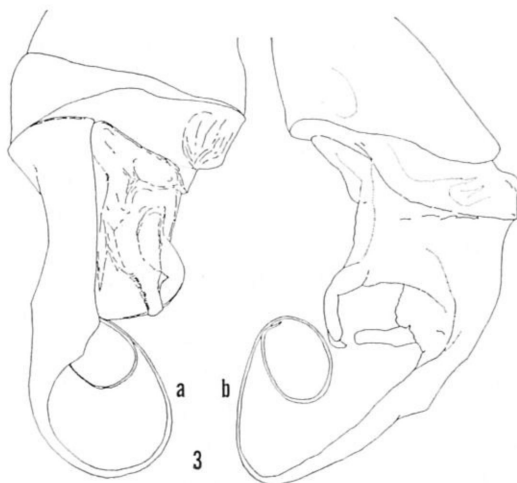


Fig. 3. Male genitalia of *Anomala babai* sp. nov.; a, dorsal view; b, lateral view.

lateral margins completely margined, posterior one not margined in the middle. Scutellum subpentagonal, apical angle somewhat rounded, sparsely punctate, with very faint median longitudinal line. Each elytron with two costae (outer one narrow, not reaching apical edge), round and rather rough punctures forming rows, intermixed with fine and microscopic punctures on innermost interval, 2nd interval with fine and somewhat confluent punctures, other interval sparsely and finely punctate; epipleura narrow, reaching near apical callus, marginal membrane narrow, starting from the middle of posterior coxa.

Pygidium broad triangular, convex in apical part in male, gently convex in female, finely and transversely punctate in places, bearing several, rather long hairs on apical edge. Metasternum and middle femora with long pale hairs. Abdominal sternites rather densely punctate and bearing scattered hairs on each side, and with a transverse row of hairs at the middle of each sternite. Anterior tibiae bidentate, apical tooth short and acuminate in male, large and blunt in female. Terminal spurs of each tibia slender. Inner claw of anterior tarsus and outer one of middle tarsus cleft at apex. Length: 14–16.5 mm; breadth: 7–9.5 mm.

Holotype: ♂, Liukuei, Kaohsiung Hsien, 11 v, 1984, W. CHEN leg.

Paratypes: 1 ♀, Wulai, Taipei Hsien, 4 vi, 1968, K. TAKAHASHI leg.; 1 ♀, near Nanshanchi, Nantou Hsien, 31 v, 1976, K. ONO leg.; 3 ♂♂, Feng Kang Shan, near Liukuei, Kaohsiung Hsien, 30 iv, 1986, K. BABA leg.; 4 ♂♂, Shaping, near Liukuei, Kaohsiung Hsien, 10 iv, 1986, K. BABA leg.; 2 ♂♂, Shykshan, near Liukuei, Kaohsiung Hsien, 25 iv, 1986, K. BABA leg.

Anomala mizusawai H. KOBAYASHI, sp. nov.

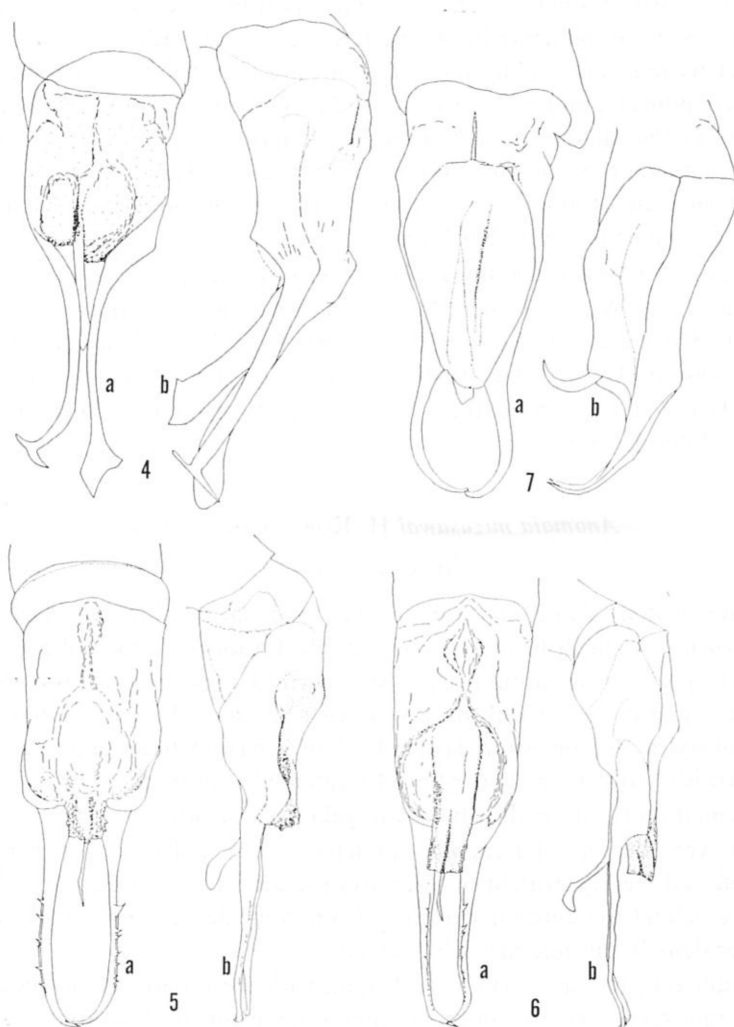
(Figs. 4 a–b, 13)

Elongate oval in shape, not very convex and hardly shining. Ventral surface blackish brown to reddish brown or coppery black, dorsal surface of the same color as ventral, or i) sides of pronotum yellowish brown to dark yellowish brown and dark-colored at the middle, or ii) with dark yellowish brown to brown patches just before the middle of elytra; legs brown to dark reddish brown (sometimes middle and posterior femora yellowish brown), or coppery black; antennal club blackish brown or coppery brown, antennal footstalk reddish brown to yellowish brown.

Clypeus very densely and rugosely punctate, short and broad, with the margins evidently reflexed, nearly straight in front and rounded at the sides, with a faint transverse groove behind the anterior margin. Frons very densely and rugosely punctate, vertex rather densely but not rugosely punctate.

Pronotum 1.4 times as broad as its length, with the broadest point near the base, anterior margin rather widely bordered, lateral one evidently bordered, posterior one not bordered; surface very densely, somewhat confluent punctate (rather densely punctate before the scutellum), with a shallow longitudinally impressed line at the middle, roundly concave near the middle of lateral margin, lateral margins gently

curved near the middle in male, rather angularly curved before the middle in female, anterior angles produced but not acute, posterior ones subrectangular. Scutellum very densely punctate, some of the punctures bearing very minute hairs on basal half. Elytra deeply striate, with confluent punctures in the striae and on the 2nd and 4th intervals, which are broad; fine, scattered punctures present on the remaining surface. Epipleura rather broad at the basal parts, disappearing at the middle of 4th sternite, marginal membrane narrow, starting from near the posterior margin of hind coxa.



Figs. 4-7. Male genitalia of *Anomala* spp. — 4, *A. mizusawai* sp. nov.; 5-6, *A. taiwana* sp. nov.; 7, *A. loi* sp. nov.; 5, from Juisui (Holotype); 6, from Liukuei; a, dorsal view; b, lateral view.

Pygidium triangular, convex in male, feebly rounded in female, very finely, closely and transversely strigose, bearing rather long hairs at the apex. Metasternum clothed with rather long tawny hairs. Abdominal sternites rather coarsely and transversely strigose at the middle, somewhat rugose at the sides, with a longitudinal row of hairs before the middle (rather long on 4th sternite). Anterior tibiae bidentate, apical teeth before the middle (rather long on 4th sternite). Anterior tarsi rather broad and very short, claw-segment with a sharp tooth just before the middle in male, the tooth being moderately sharp in female. Posterior tibiae slender; longer claws of the anterior and middle legs cleft at apices. Length: 14–18 mm; breadth: 8–10 mm.

Holotype: ♂, Wulai, Taipei Hsien, 13 vi, 1968, K. MIZUSAWA leg.

Paratypes: 10 ♂♂, 9 ♀♀, same data as holotype; 26 ♂♂, 21 ♀♀, Wulai, Taipei Hsien, 13 vi, 1968, T. KIKUCHI leg.; 10 ♂♂, 13 ♀♀, Wulai, Taipei Hsien, 8~28 v, 1968, K. TAKAHASHI leg.; 3 ♂♂, 3 ♀♀, Wulai, Taipei Hsien, 21 vi, 1971, K. MIZUSAWA leg.; 4 ♂♂, 9 ♀♀, Wulai, Taipei Hsien, 14~19 v, 1977, H. SAKAINO leg.; 2 ♂♂, 1 ♀, Nanshanchi, Nantou Hsien, 13 v, 1977, H. SAKAINO leg.; 1 ♂, Nanshanchi, Nantou Hsien, 25 vi, 1976, M. KUBOTA leg.; 1 ♀, Wulai, Taipei Hsien, 25 v, 1971, K. SAKAI leg.

Anomala taiwana H. KOBAYASHI, sp. nov.

(Figs. 5 a–b, 6 a–b, 14)

This species is very closely allied to the preceding and *A. libidinosa* OHAUS, 1916, but it may be separated from them by the following points: Body feebly shining beneath, rather strongly shining above. Pronotum rather sparsely and finely punctate, lateral margins angularly curved at the middle, very feebly sinuate behind there. Elytra shallowly and sparsely punctate, 2nd interval rather broad, shallowly and finely punctate. Epipleura extending beyond the posterior margin of 4th sternite, marginal membrane starting from the middle of hind coxa. Pygidium convex near apical margin. Length: 17–20 mm; breadth: 9–11 mm.

Holotype: ♂, Juisui, Hualien Hsien, 25 v, 1975, K. AKIYAMA leg.

Paratypes: 3 ♀♀, same data as holotype; 2 ♂♂, 3 ♀♀, same locality as holotype, 14 vi, 1968, T. KIKUCHI leg.; 1 ♂, 2 ♀♀, Tengchih, Kaohsiung Hsien, 11 v, 1978, H. SAKAINO leg.; 1 ♂, Tengchih, Kaohsiung Hsien, 3 v, 1983, S. SAITO leg.; 1 ♂, 1 ♀, Liukuei, Kaohsiung Hsien, 6 vi, 1976, M. KUBOTA leg.

Anomala loi H. KOBAYASHI, sp. nov.

(Figs. 7 a–b, 15)

Elongate oval in shape, not very convex, and shining. Ventral surface deep greenish black, head and pronotum deep green (pronotum with narrow, yellowish brown lateral borders), elytra and pygidium of the same color as ventral surface, three irregularly shaped spots on each elytron, forming a zigzag transverse band before the middle, legs deep green, excepting middle and posterior femora which are yellowish

brown; antennal club deep greenish black, footstalk reddish brown.

Clypeus rather densely punctate, short and broad, with the margins evidently reflexed, nearly straight in front and rounded at the sides. Frons rather densely punctate, vertex rather sparsely so.

Pronotum 1.6 times as broad as its length, with the broadest point near the base, anterior margin rather widely bordered, lateral ones evidently bordered, posterior one not bordered; surface sparsely and finely punctate, lateral margins angularly curved near the middle, feebly sinuate behind the middle, anterior angles produced and acute, posterior ones rectangular. Scutellum very sparsely punctate, some of the punctures bearing very minute hairs on basal half. Elytra deeply striate, with confluent or granulate punctures on intervals beyond the 5th, outermost interval very convex, inner four very minutely and sparsely punctate. Epipleura rather broad at the base, disappearing at the posterior margin of 2nd sternite, marginal membrane narrow, starting from near the middle of hind coxa.

Pygidium triangular, convex, very finely, closely and transversely strigose, bearing rather long hairs near the apex. Metasternum densely clothed with rather long tawny hairs. Abdominal sternites sparsely and transversely strigose at the middle, somewhat rugose at the sides (posterior margin of each sternite impunctate), bearing irregular rows of hairs on each sternite. Anterior tibiae bidentate, apical teeth short and rather acute. Anterior tarsi rather broad and short, claw-segment with a sharp tooth on apical third. Middle femora bearing rather dense hairs. Posterior tibiae slender; longer claws of anterior and middle legs cleft at apices. Length: 13 mm; breadth: 6 mm.

Female unknown.

Holotype: ♂, Palin (Baron), Taoyuan Hsien, 19 vi, 1984, J. Lo leg.

Paratypes: 4 ♂♂, Lalashan, Taoyuan Hsien, 4 vi, 1987, J. Lo leg.

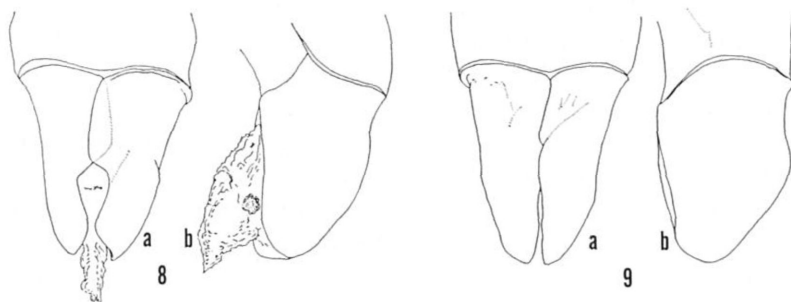
Blitopertha taitungensis H. KOBAYASHI, sp. nov.

(Figs. 8 a-b, 16)

Ground color of body pale reddish brown to yellowish brown; tibiae and tarsi reddish brown or dark reddish brown; antennae yellowish brown; middle of clypeus, head, wide maculation of pronotum, the area surrounding scutellum, outer margins and suture of elytra, and rather square maculation on apical part of elytra blackish brown or dark brown in male; head, the area surrounding scutellum and elytral suture dark brown in female.

Clypeus semicircular, reflexed and bordered, rather densely and somewhat rugose-punctate, frons rather densely punctate, vertex small and sparsely punctate, fronto-clypeal suture angulate at the middle; eyes large and prominent in male, moderate in female, bearing a few erect hairs at the inner sides of eyes. Antennae 9-jointed, with club longer than the 2nd to 6th segments combined in male, shorter than that in female.

Pronotum 1.7 times as broad as its length, sparsely and finely punctate, with



Figs. 8-9. Male genitalia of *Blitopertha* spp. — 8, *B. taitungensis* sp. nov.; 9, *B. senooi* sp. nov.; a, dorsal view; b, lateral view.

broadest point just behind the middle, lateral margins gently arched, anterior angles produced, posterior ones rather obtuse; all margins clearly bordered, lateral and sides of anterior margins with sparse hairs. Scutellum very sparsely and finely punctate. Elytra with several striae consisting of coarse and dense punctures; intervals rather convex with very sparse and microscopical punctures. Epipleura narrow, reaching near the apical callus; marginal membrane narrow, starting from near the anterior margin of hind coxa.

Pygidium moderately convex, rather densely punctate, bearing somewhat long hairs on apical margin. Metasternum with several long hairs. Abdominal sternites sparsely and finely punctate, with a transverse row of hairs at the middle of each sternite, and a longitudinal ridge on each side from basal to the 4th sternites. Anterior tibiae tridentate, 3rd tooth minute and not conspicuous especially in female, apical tooth rather large but blunt. Middle and posterior tibiae with two oblique lateral ridges, of which the basal one of middle tibia is short and lower than the other. Claws of middle and posterior tarsus slender, outer one of middle tarsus cleft at apex. Length: 9-9.5 mm; breadth: 4-5 mm.

Holotype: ♂, Juisui, Taitung Hsien, 25 v, 1974, K. AKIYAMA leg.

Paratypes: 1 ♀, same data as holotype; 1 ♂, 2 ♀♀, Chipen Spa, Taitung Hsien, 1 vi, 1968, T. KIKUCHI leg.

***Blitopertha senooi* H. KOBAYASHI, sp. nov.**

(Figs. 9 a-b, 17)

Upper surface black or sometimes pale yellowish brown; head, a part of pronotum, the area surrounding scutellum and suture of elytra black; legs and antennae black to dark blackish brown (sometimes legs and antennal club yellowish brown). Ventral surface generally black, sometimes abdomen or the whole of ventral surface yellowish brown.

Clypeus densely punctate, anterior margin gently arched, somewhat reflexed and

bordered, frons rather densely and somewhat confluent punctate, vertex rather sparsely punctate, bearing several short hairs at the inner sides of eyes; fronto-clypeal suture somewhat angulate at the middle. Antennal club longer than the 2nd to 6th segment combined in male, a little shorter than that in female.

Pronotum 1.7 times as broad as length, evenly and rather sparsely punctate; with the broadest point in the middle in male, just before the middle in female, lateral margins subparallel behind the middle and gently narrowed to front in male, gently arched in female, anterior angles produced, posterior ones obtuse; all margins clearly bordered, lateral margins with very sparse, long hairs. Scutellum very sparsely and finely punctate. Elytra with coarse, dense and somewhat united punctures, which form several striae; intervals rather convex with very sparse and microscopical punctures. Epipleura narrow, almost reaching sutural angle; marginal membrane narrow, starting from near the anterior margin of hind coxa.

Pygidium feebly convex, densely punctate, bearing somewhat long hairs on lateral and apical margins, with 2 or 3 long hairs near sides of basal margin. Metasternum with several, rather long hairs. Abdominal sternites sparsely and finely punctate at the sides, very sparsely punctate or almost impunctate at the middle, with a transverse row of hairs at the middle of each sternite, and a longitudinal ridge on each side from basal to 4th sternites. Anterior tibiae tridentate, 3rd tooth minute, apical tooth rather large but blunt. Middle and posterior tibiae with three oblique lateral ridges, of which the basal one of middle tibia is shorter and lower than the others. Claws of middle and posterior tarsus slender, outer one of middle tarsus cleft at apex. Length: 9–9.5 mm; breadth: 4–5 mm.

Holotype: ♂, Nanshanchi, Nantou Hsien, 27 v, 1978, T. SENOO leg.

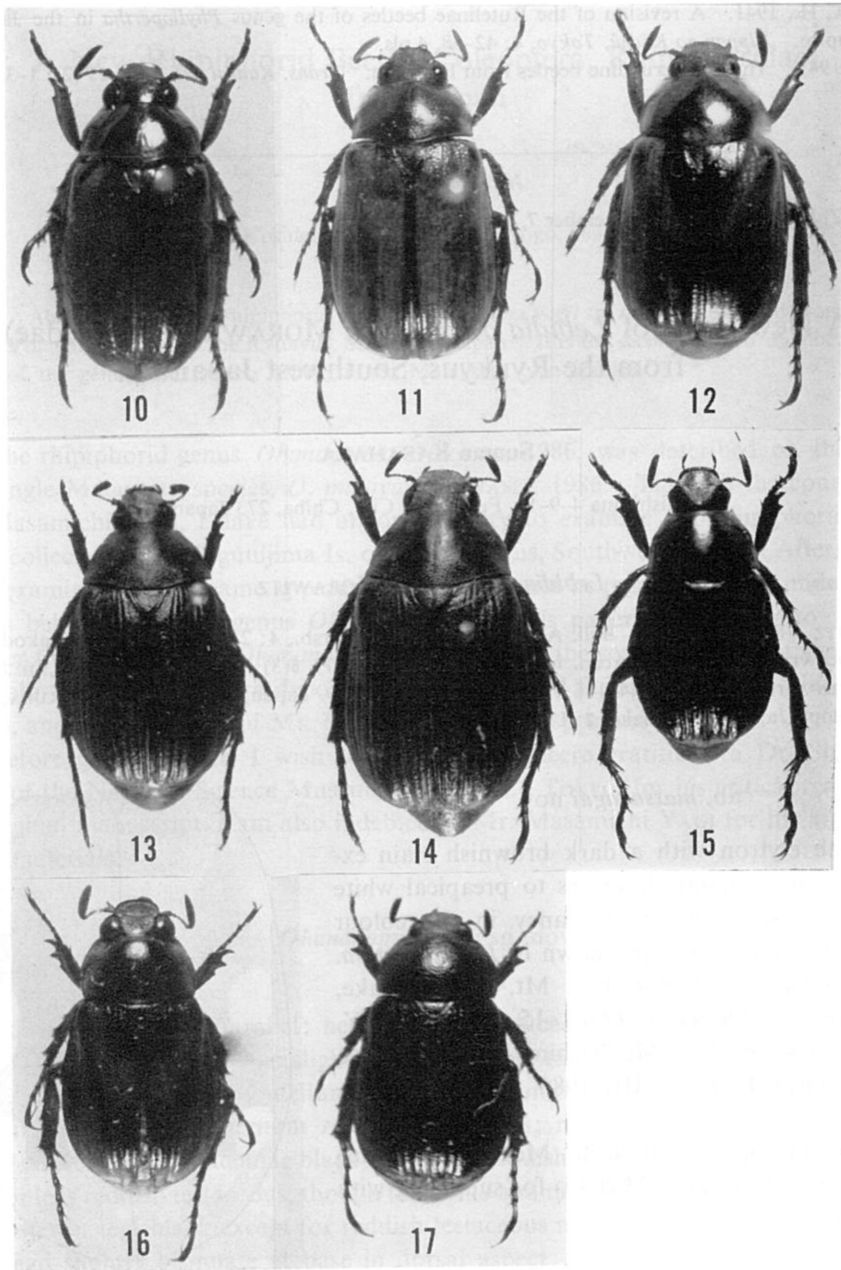
Paratypes: 4 ♀♀, same data as holotype.

摘 要

筆者は、台湾から *Callistethus* 属の1種, *Anomala* 属の5種, *Blitopertha* 属の2種, 合計8種のコガネムシ類の新種をここに報告する。このなかで、*Callistethus* 属は台湾からは今までに、*C. plagii-collis* ただ1種が知られているにすぎなかったため、これが2種目の記録となる。

References

- ARROW, G. J., 1917. Fauna of British India, Lamellicornia part II, 126–268.
 KOBAYASHI, H., 1983. Scarabaeidae from Taiwan 9. *Gekkan-mushi, Tokyo*, (150): 15–18.
 ——— 1984. Ditto 10. *Ibid.*, (155): 17–20.
 ——— 1985. Ditto 11. *Ibid.*, (169): 26–29.
 OHAUS, F., 1961. H. SAUTER's Formosa-Ausbeute. *Arch. Naturg.*, (A), **82** (4): 1–8.
 ——— 1925. Nachtrag zur Rutelinenfauna Formosas. *Arch. Naturg.*, (A), **91** (5): 122–131.
 PAULIAN, R., 1959. Coléoptères Scarabéides de l'Indochine. *Annls. Soc. ent. France*, **127**: 73–105.
 REITTER, E., 1903. Bestimmungstabelle der Melolonthidae. IV: Rutelini, Hoplini und Glaphyrini. *Verh. naturf. Ver. Brunn*, **41** (Best-Tab. 51): 28–154.



Figs. 10-17. — 10, *Callistethus formosanus* sp. nov.; 11, *Anomala nigrolineata* sp. nov.; 12, *A. babai* sp. nov.; 13, *A. mizusawai* sp. nov.; 14, *A. taiwana* sp. nov.; 15, *A. loi* sp. nov.; 16, *Blitopertha taitungensis* sp. nov.; 17, *B. senooi* sp. nov.



Fig. 1. *Ohananomia yagii* sp. nov. (Holotype)

being connected by a narrow piece; antennal cavities small and simple; antennae eleven-segmented, distinctly pectinate from the fourth segment, with the first segment curved, distinctly expanded apically, about twice as long as the following two united, the second short, globular, the third about 1.5 times as long as the second, the fourth to sixth each subtriangular, slightly longer than the third, and distal ones short and distinctly pectinate.

Pronotum distinctly narrower than elytra at base, distinctly convergent anteriorly; sides sinuously expanded posteriorly, slightly constricted near the anterior third; basal margin about 2.5 times as wide as the anterior, slightly bisinuate, with the median lobe very broad, and truncate at the middle; lateral ridges extending from posterior angles to the posterior fourth; disc convex, very obsoletely depressed medially, transversely grooved along base; surface evenly and finely punctate, evenly clothed with blackish semirecumbent hairs. Scutellum slightly but distinctly depressed in the middle posteriorly, and arcuately rounded at apex.

Elytra short, reaching the fourth abdominal tergite, about 3.2 times as long as pronotum; sides subparallel, separately rounded at the tips; disc almost convex, with a small basal deperssion, an obsolete short costa at middle; surface very finely punctate and pubescent.

Prosternum with the anterior margin roundly emarginate; prosternal process very narrowly ridged between anterior coxae. Mesosternum convex. Metasternum evenly convex, without median groove. Abdomen with the last ventral segment rounded at

apex, without any depression. Legs slender; anterior and middle tibiae without spine at apices; posterior tibiae with a spine at each apex; tarsi cylindrical, with the first segment about as long as the following three united, the second about twice as long as the third, which is the shortest, the fourth slightly shorter than the second. Claws simply cleft, distinctly pectinate.

Length: 7.8–9.7 mm; width: 1.2–1.5 mm.

Holotype: ♀, vicinity of Yonaguni Air Port, Yonagunijima Is., Ryukyus, Japan, 4. V. 1980, M. YAGI lgt. Paratype: ♀, Mt. Urabudake, Yonagunijima Is., Ryukyus, Japan, 4. V. 1979, M. YAGI lgt.

Remarks. The present species is closely allied to *Ohananomia malayana* TÔYAMA, 1986, from Malaysia, but can be easily distinguished from it by the following characteristics: 1) frons entirely reddish testaceous, instead of being reddish testaceous except for the blackish parts between upper and lower lobes of eyes; 2) pronotum black medially and testaceous laterally, instead of being entirely black; 3) elytra black with slight violaceous tinge, while in *O. malayana*, they are entirely black without any tinge.

摘 要

与那国島よりホソコバネオオハナノミ亜科に属する1新種 *Ohananomia yagii* sp. nov. を記載した。

References

- TÔYAMA, M., 1986. A new rhipiphorid beetle (Coleoptera, Rhipiphoridae) from Malaysia. *Elytra*, Tokyo, 14: 43–45.
—— & T. HATAYAMA, 1985. Occurrence of the rhipiphorid subfamily Hemirhipidiinae in Japan and Taiwan (Coleoptera, Rhipiphoridae). *Gekkan-mushi*, Tokyo, (176): 18–24.