

## New or Little-known Elateridae (Coleoptera) from Japan, XXVIII

Hitoo ÔHIRA

Kitsuneyama 6–4, Maigi-chô, Okazaki, 444–35 Japan

**Abstract** Two new species and two new subspecies of elaterid beetles are described from Japan and illustrated. They are: *Agrypnus (Colaulon) kusuii* sp. nov. (subfam. Agrypninae), *Hypolithus motschulskyi hiranoi* subsp. nov. (subfam. Hypnoidinae), *Denticollis yasumii* sp. nov. (subfam. Denticollinae) and *Ampedus (Parelater) canalicollis shidouii* subsp. nov. (subfam. Ampedinae).

In the present study, I am going to describe two new species and two new subspecies of elaterid beetles from Japan. They belong to four different subfamilies, Agrypninae, Hypnoidinae, Denticollinae and Ampedinae. The holotypes of each species and subspecies described in this paper are preserved in the collection of the National Science Museum (Nat. Hist.), Tokyo.

Before going further, I wish to express my deep indebtedness to Dr. Shun-Ichi UÉNO of the National Science Museum (Nat. Hist.), Tokyo, for his reading the manuscript and giving me useful suggestions, and to Messrs. Yoshihisa KUSUI of Nagasaki, Yukihiro HIRANO of Odawara, Yasumi TAKAHASHI of Iwate, Toshihiro OZAKI of Hirosaki, and Hiroshi SHIDOU of Sapporo for their kindness in offering the specimens used in this report.

### *Agrypnus (Colaulon) kusuii* sp. nov.

(Fig. 1)

*Male.* Length 6.5 mm, width about 2.5 mm. Body robust, nearly parallel-sided and moderately convex above; surface rather shining, black to blackish brown except for dark brown around margins of pronotum and elytra; antennae (basal segment dusky brown) and legs more or less reddish brown; vestiture fulvous, scale-like and decumbent all over.

Head subtriangularly depressed between eyes; surface deeply and coarsely punctate; clypeal margin obliterated at middle, well-ridged over antennal insertions. Antenna short, not attaining to posterior angle of pronotum, 2nd segment subcylindrical, a little longer than its breadth, 3rd subclavate, almost as long as 2nd and a little shorter than 4th, 4th to 10th triangularly serrate (Fig. 1 B).

Pronotum subquadrate, widest across the middle, thence clearly narrowed towards anterior angles, subparallel-sided in posterior half; disc gently convex, deeply, coarsely

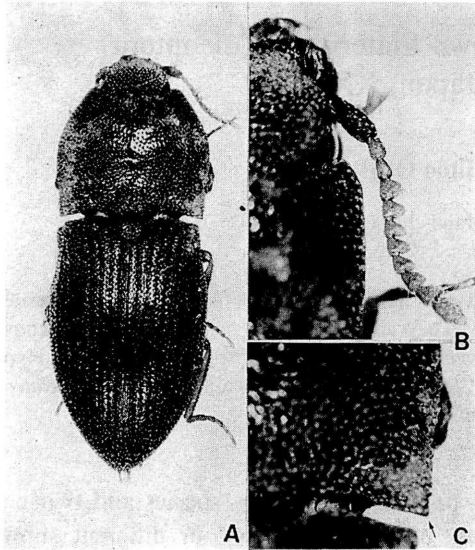


Fig. 1. *Agrypnus (Colaulon) kusuii* sp. nov. — A, Holotype (male); B, same, right antenna; C, same, right posterior angle of pronotum.

and somewhat rugosely punctate, bearing a shallow median smooth longitudinal line in posterior half; posterior angles short, with each tip pointed posteriorly, but not truncate obliquely, without carina above (Fig. 1 C).

Elytra about 1.8 times as long as their basal breadth; sides weakly reflexed, gradually dilated backwards at basal third, thence rounded and gradually converging towards apices which are normally rounded; striae well defined, deeply, circularly and regularly punctate; intervals a little elevated, irregularly and rugosely punctate. Hind wings of normal length, not degenerated.

*Female unknown.*

*Holotype:* ♂, Mage-jima Is. near Tanegashima Is. in Kagoshima Pref., 2-VIII-1991, Y. KUSUI leg.

*Distribution.* Mage-jima Is. off the western coast of Tanegashima Is., south of Kyushu.

This new species is closely allied to *Agrypnus (Colaulon) hypnicola* (KISHII, 1964) from Japan, but can be distinguished from the latter by the following points: the disc of pronotum bearing a smooth median longitudinal line in posterior half; the posterior angles of pronotum pointed posteriorly, not truncate.

***Hypolithus motschulskyi hiranoi* subsp. nov.**

(Fig. 2)

*Male.* Length 12 mm, width about 4 mm. Body black and shining except for dusky reddish-brown antennae and legs; vestiture short, decumbent and fulvous on ventral surface, almost glabrous on dorsal surface.

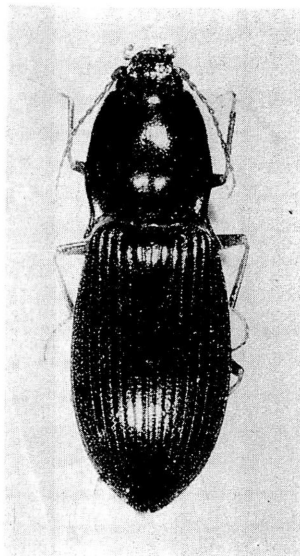


Fig. 2. Holotype of *Hypolithus motschulskyi hiranoi* subsp. nov. (male).

This new subspecies somewhat resembles subsp. *tachikawai* ÔHIRA, 1968, from Mt. Mitake, west of Tokyo, and subsp. *ohbayashii* ÔHIRA, 1968, from Mt. Ôyama in Kanagawa Prefecture, but differs from them in the following points: body robuster and stouter, with the sides of pronotum clearly sinuate just before posterior angles which are sharply produced postero-laterad; elytral striae deep, with the intervals elevated and more smoothly and minutely punctate.

Holotype: ♂, Mt. Kintoki of the Hakone Mts. in Kanagawa Pref., 6-VII-1991, Y. HIRANO leg. Paratype: 1 ♀, same data as for the holotype.

*Distribution.* Hakone Mts. in Kanagawa Prefecture, Honshu.

***Denticollis yasumii* sp. nov.**

(Fig. 3)

*Male.* Length 7.5 mm, width about 2 mm. Body elongate, almost parallel-sided and moderately convex above; surface shining, entirely yellowish brown except for dark brown antennae, most parts of head, basal margin of pronotum, scutellum, suture and 2nd and 6th to 9th intervals of elytra; legs yellowish brown; vestiture fine, erect and pale yellow.

Head deeply and triangularly excavated between eyes (Fig. 3 C); surface coarsely and unevenly punctate; clypeal margin well raised, rounded at middle; nasal area broad, subrectangular, almost 1/2 as high as its transverse width; eyes prominent, antenna elongate, extending beyond posterior angle of pronotum at least by 4 apical segments; basal segment robust and subclavate, 2nd subtriangular and almost as long as its width, 3rd to 10th weakly serrate (Fig. 3 F).

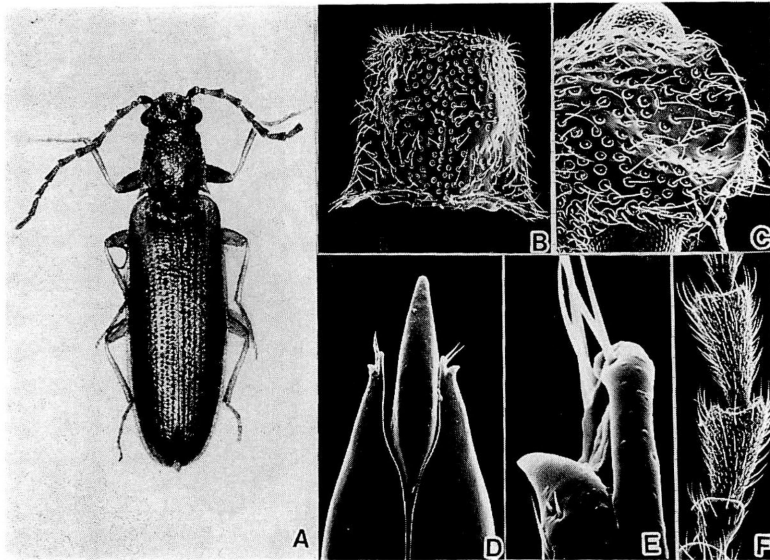


Fig. 3. *Denticollis yasumii* sp. nov. — A, Holotype (male); B, pronotum in dorsal aspect; C, head in dorso-lateral aspect; D, aedeagus in dorsal aspect; E, apical portion of left lateral lobe of aedeagus; F, 2nd to 4th segments of male antenna.

Pronotum subquadrate, widest across base, with sides weakly sinuate just behind anterior angles and weakly rounded at middle; disc moderately convex, bearing a pair of oblique impressions at the sides of basal area; surface coarsely and uniformly punctate; posterior angle short, pointed postero-laterad, without carina above (Fig. 3 B). Scutellum subquadrate, punctate and pubescent.

Elytra about 3 times as long as their basal breadth, with sides almost parallel in basal 3/4, thence rounded and gradually convergent towards apices which are obtusely rounded; striae defined, coarsely punctate; intervals elevated, irregularly and transversely rugose. Legs slender, tarsi and claws simple. Aedeagus as illustrated (Fig. 3 D–E).

*Female* unknown.

Holotype: ♂, Mt. Hayachine, Iwate Pref., 26–VII–1987, Y. TAKAHASHI leg. Paratypes: 2 ♂♂, Iwaki-chô, Aomori Pref., 25~28–VII–1986, T. OZAKI leg.

*Distribution.* Honshu, Japan.

This new species is somewhat allied to *Denticollis varians shirozui* ÔHIRA, 1963, from Hokkaido, but can be distinguished from the latter by the narrower and slender body and the antennae weakly serrate from the 4th to the 10th segments.

***Ampedus (Parelater) canalicollis shidouii* subsp. nov.**

(Fig. 4)

*Male.* Length 10 mm, width about 3 mm. Body robust and shining, black

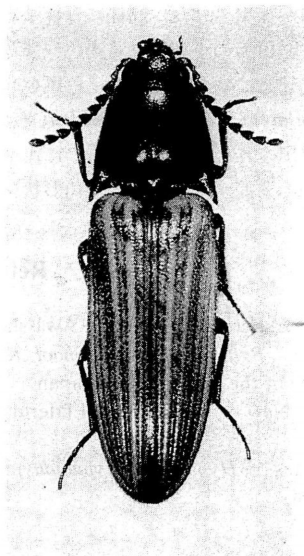


Fig. 4. Holotype of *Ampedus (Parelater) canalicollis shidouii* subsp. nov. (male).

except for cinnabar-red elytra (more or less black at the apical portion), antennae black, legs black, with blackish brown tarsi and reddish brown claws; vestiture black; pronotum usually bearing a fine opalesque lustre.

This new subspecies can be distinguished from the nominotypical subspecies from Honshu by the shorter and more clearly trapezoidal pronotum, coarser and denser punctures on head, well-ridged clypeal margin, and more clearly serrate antennae.

Holotype: ♂, Ishikari-chô, Hokkaido, 1-XI-1992, H. SHIDOU leg. Paratypes: 4 ♂♂, 1 ♀, same data as for the holotype.

*Distribution.* Hokkaido, Japan.

## 要 約

大平仁夫: 日本産コメツキムシ科の新種, XXVIII. — 本報告では, 4 亜科に属する 2 新種 2 新亜種を記載した.

*Agrypnus (Colaulon) kusuii* (シマヒメサビキコリ) は, 長崎検疫所の楠井善久氏が, 鹿児島県の種子島に隣接した馬毛島において採集された雄個体である. 一般外形は *A. (C.) hypnicola* (KISHII, 1964) コガタヒメサビキコリに類似しているが, 前胸背板正中部に平滑縦隆線を有し, 後角部が切断状をせず, 上翅の点刻が粗雑で深く印することにより識別できる.

*Hypolithus motschulskyi hiranoi* (ハコネミヤマヒサゴメツキ) は, 箱根山塊の金時山から, 小田原市の平野幸彦氏によって見出された. 体長 12 mm 内外で黒色, 光沢のある個体である. 東京都御岳山産 (subsp. *tachikawai*) や相模大山産 (subsp. *ohbayashii*) のものに比べて, 体が大型で幅広く, 前胸背板の両側は後角前で顕著に内方へ湾曲, 後角は鋭く後外方へ尖ることによって識別できる.

*Denticollis yasumii* (ハヤチネベニコメツキ) は, 岩手県の早池峯山において, 岩手県の高橋泰美

氏により 2 雄個体が採集された。同様に青森県岩木町で、弘前市の尾崎俊寛氏が 2 雄個体を採集されている。体長 7~8 mm の小型で、黄褐色~淡黄褐色をした細長い種である。頭部と前胸背板の大部分は暗褐色で、上翅には縦の帯状の暗褐色斑を有する。

*Ampedus (Parelater) canalicollis shidoui* (エゾムネミヅアカコメツキ) は、北海道の石狩町で志藤宏氏が薪割で見出された。本州産のものに比べて前胸背板がより短大で、頭部の点刻はより粗雑で密に生じ、触角の第 3 節がより顕著に三角形状をしていることなどにより識別できる。

### References

- KISHII, T., 1964. Elateridae of islands Awa-shima, Hegura-jima and Nanatsu-jima. The snapper of islands (IV). *Bull. Heian High School, Kyoto*, (8): 1-38, 3 pls.
- LEWIS, G., 1894. On the Elateridae of Japan. *Annls. Mag. nat. Hist.*, (6), 13: 26-48.
- ÔHIRA, H., 1963. New or little-known Elateridae from Japan, V (Coleoptera). *Kontyû, Tokyo*, 31: 176-179.
- 1968. Notes on *Hypolithus (Hypnoidus) motschulskyi* (FLEUTIAUX, 1902) (1). *Ent. Rev. Japan*, 21: 25-32, 1 pl.

---

*Elytra, Tokyo*, 21 (2): 254, Nov. 15, 1993

## A New Locality of *Pterostichus tanakaorum* (Coleoptera, Carabidae)

Sumao KASAHARA

Nishifuna 4-9-13, Funabashi City, Chiba, 273 Japan

The apterous pterostichine carabid beetle, *Pterostichus tanakaorum* MORITA et OHKURA, 1988, was described from Ryûjin-mura in the Kii Peninsula, Japan, and has hitherto been known only from the type locality. Recently, I have examined a male specimen of the same species collected at Misato-chô in Wakayama Prefecture, more than 20 km north-west of Ryûjin. I record it here as an additional locality of the interesting pterostichine.

1 ♂, Ta (220 m alt.), Misato-chô, Wakayama Pref., 15-X-1992, S. UÉNO leg. It was obtained with the microphthalmic trechine carabid, *Trechiana reductoculatus* S. UÉNO.

I thank Dr. Shun-Ichi UÉNO of the National Science Museum (Nat. Hist.), Tokyo, for giving me the opportunity to examine the specimen under his care.