

## Notes on the Species of *Nazeris* (Coleoptera, Staphylinidae) from Taiwan

**Tateo Iro**

E7-303, Otokoyama Yutoku 8, Yawata, Kyoto, 614 Japan

**Abstract** Two additional new staphylinid species belonging to the *Nazeris femoralis* group are described from Taiwan, *N. aestivalis* sp. nov. and *N. vernalis* sp. nov.

Up to the present time, six species and one subspecies of *Nazeris* have been described from several localities of Taiwan. Four of them belong to the *N. femoralis* group which is recognized on having a distinct hook on each hind trochanter in the male. In the present paper, I am going to describe two new additional species of this species-group under the names of *N. aestivalis* sp. nov. and *N. vernalis* sp. nov. The localities of all the known species of this group in Taiwan will be shown on a sketch map (Fig. 7).

### *Nazeris aestivalis* sp. nov.

(Fig. 1–3)

Body a little shiny, reddish brown, apical segments of abdomen slightly darkened, antennae except for basal three or four segments and legs (femora, tibiae and tarsi) yellowish brown; pubescence on body pale yellow to dark brown.

Length: 5.3 mm.

Head quadrate, a little longer than wide (1.06:1), coarsely, closely and rather regularly punctate but the puncture arrangement is slightly disturbed on subdepressed frons; labrum clearly quadridentate, widely and triangularly notched in middle, the inner two teeth somewhat thick and slightly longer than the outer two; vertex evenly convex; eyes relatively small, each longitudinal diameter shorter than a half length of postgena, which are nearly parallel-sided, widely angulate to neck; antennae reaching behind the middle of pronotum, all segments clearly elongate, 1st segment very robust and nearly as long as the following two segments combined, 2nd segment the shortest but wide, each segment of 3rd to 10th respectively shorter than the preceding one, 11th slightly longer and wider than 10th. Ventral surface of head similarly but more regularly punctate than on dorsal surface; mentum shiny and submentum less shiny.

Pronotum oval, longer than wide (1.15:1), as long as and narrower than head (0.91:1), widest at apical third, from which the sides are strongly rounded apicad and

gradually rounded basad; disc much more coarsely and much more deeply punctate than on head, the punctures becoming less coarse laterad, median line narrow and present in basal third, two or three erect setae near the widest point rather short and not outstanding.

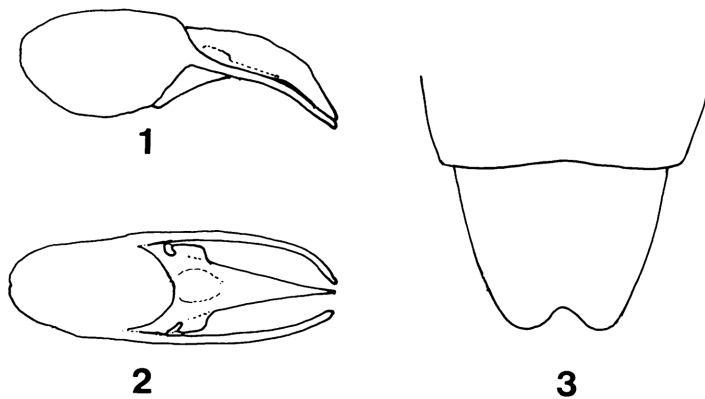
Elytra triangularly abbreviated with strongly effaced shoulders, distinctly shorter than pronotum (0.78 : 1), width at the widest point near apex about twice as wide as base and scarcely narrower than pronotal width; surface slightly undulate, coarsely, closely and a little rugosely punctate, the size of punctures being intermediate between those on head and pronotum. Prosternum coarsely and transversely seriatly punctate, median carina rather dull and weakened at apex. Scutellum perceptibly punctate.

Abdomen slightly enlarged laterad, with basal tergite a little less coarsely punctate than on head, the punctures decreasing in size toward apical tergite, those on each sternite coarser than on the corresponding tergite, those on the apicalmost tergite very fine and obsolete. In the male, 7th sternite very weakly depressed in middle and barely sinuate at apical margin, 8th sternite scarcely or not depressed along middle and rather widely but finely excised at apical margin in middle; hind femora without any long hairs, hind trochanters uncinatate on outer side.

Aedeagus slender, moderately sclerotized, apical part of median lobe composed of two parts, the basal part slightly depressed in middle and provided with a pair of remarkable wing-like processes clearly angulate at shoulders, and the apical part straightly narrowed toward sharply pointed tip, which extends only a little beyond the apex of fairly thin and slightly incurved apophysis.

Holotype: ♂, Near Tungpu, Nantou Hsien, Taiwan, 25-VIII-1987, Y. SHIBATA leg. (Tokyo University of Agriculture Collection, Tokyo). Paratype: 1 ♀, the same data as for holotype.

The present species is closely similar in general appearance and in aedeagal construction to *N. matsudai*, but is easily distinguished from the latter by the median



Figs. 1-3. *Nazeris aestivalis* sp. nov.; 1, aedeagus in lateral view; 2, same in ventral view; 3, outline of the 7th and 8th sternites in ♂.

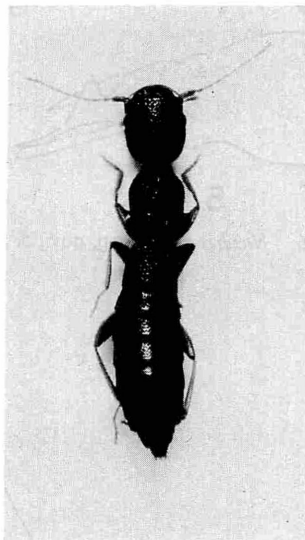


Fig. 4. Holotype of *Nazeris vernalis* sp. nov.

lobe of male genitalia without any constriction in apical half, the male 7th sternite slightly depressed in middle, the male 8th sternite more narrowly excised at apical margin, and the body lighter in color.

*Nazeris vernalis* sp. nov.

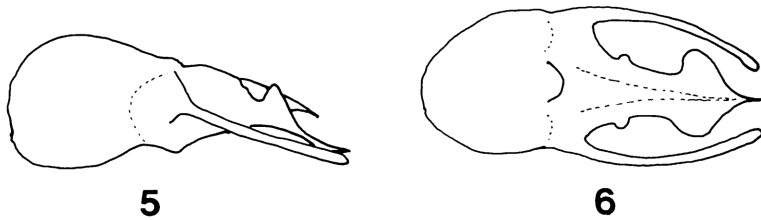
(Fig. 4-6)

Body a little shiny, black mandibles, labrum, basal two segments of antennae and coxae inclusive of trochanters reddish brown, mouth parts, the remainings of antennae and legs yellowish brown; pubescence on body yellowish brown to brownish black.

Length: 5.0–5.3 mm.

Head subquadrate, slightly longer than wide (1.07:1), coarsely, closely, deeply and more or less uniformly punctate, the punctures even on subdepressed frons hardly or not disturbed in arrangement; labrum with inner teeth a little longer than the outer; vertex evenly convex, postgenae subparallel-sided, slightly and sublinearly narrowed behind and widely angulate to neck; eyes moderately sized, its longitudinal diameter about a half length of postgena; antennae slender, exceeding middle of pronotum, all segments clearly longer than wide, 1st segment robust and longest, 2nd the shortest, 3rd to 10th gradually shortened distad, 10th approximately equal in length to 2nd and shorter than 11th. Ventral surface of head similarly punctate to dorsal surface.

Pronotum ovate, longer than wide (1.16:1), narrower (0.90:1) and scarcely shorter than head, widest at apical third, thence lateral sides more gently rounded basad



Figs. 5-6. *Nazeris vernalis* sp. nov.; 5, aedeagus in lateral view; 6, same in ventral view.

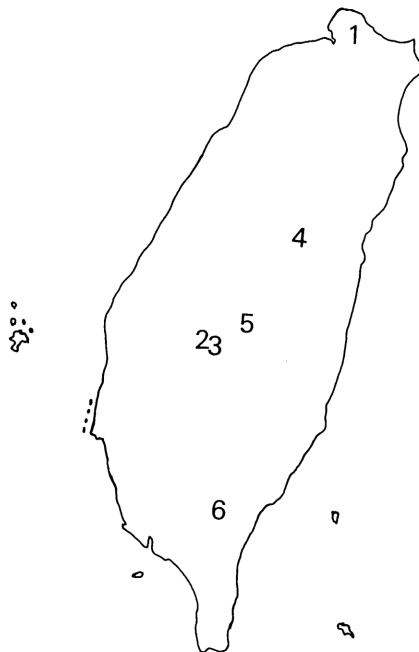


Fig. 7. Map showing the distribution of the group of *Nazeris femoralis* in Taiwan; 1 — *N. matsudai*, 2 — *N. femoralis*, 3 — *N. persimilis*, 4 — *N. uenoi*, 5 — *N. aestivalis*, 6 — *N. vernalis*.

than apicad, without characterized erect long setae near the widest point; discal punctures coarse, close and deep, much coarser and much deeper than on head, and somewhat irregular in arrangement on both sides of median line which is situated in basal third and sometimes hardly visible.

Elytra widened behind, not strongly constricted at shoulders, widest near apex, as wide as pronotal width, slightly undulate and coarsely, rugosely punctate, the punctures a little irregular in form due to the slight undulations. Prosternum with median carina diminishing apicad in height, and almost invisible near apical margin.

Abdomen without any microsculpture, and with punctures usually diminished distad in size. In the male, 5th sternite scarcely, 6th sternite perceptibly and 7th

sternite feebly depressed along middle and hardly sinuate at apical margin, 8th sternite not depressed and widely, relatively shallowly excised at apical margin in middle; each hind trochanter furnished with a distinct hook, hind femur bearing six or seven, erect and not long hairs on inner side of apical half.

Aedeagus rather sclerotized, very peculiar in shape, median lobe provided with two pairs of prominences at the lateral sides, the basal pair being small, the apical pair strongly and roundedly expanded to form a squid-like apical part, its apical tip sharply pointed though hardly extending beyond the tip of apophysis.

Holotype: ♂, Mt. Peitawushan (1,500 m), Pingtung Hsien, Taiwan, 1-V-1992, A. SMETANA leg. (Canadian National Collection, Ottawa). Paratypes: 1 ♂, 3 ♀♀, same data as the holotype, 1 ♂, 1 ♀, Mt. Peitawushan (2,000 m), Pingtung Hsien, Taiwan, 23-V-1991, A. SMETANA leg.

The present species resembles *N. femoralis* in general appearance but differs in the following points: aedeagus quite different in shape, the male 7th sternite more deeply and more distinctly depressed, and the male hind femora bearing much shorter and less prominent hairs.

#### Acknowledgement

I am deeply indebted to Dr. A. SMETANA, Ottawa, and Mr. Y. SHIBATA, Tokyo, for their kindness in offering the material used in this paper.

#### 要 約

伊藤建夫：台湾産 *Nazeris* 属ハネカクシについて。——台湾産の *Nazeris* 属ハネカクシはすでに6種および1亜種が知られ、そのうちの4種は雄の後転節に鉤状突起をもつ *femoralis* 群に属する。本論文では、この群の種を2種追加記載するとともに、同種群の全種の分布図を示した。

#### References

- Ito, T., 1985. On the species of *Nazeris* from Taiwan (Coleoptera, Staphylinidae). *Ent. Rev. Japan*, **40**: 53-57.  
 —— 1995. A second report on the *Nazeris* species (Coleoptera, Staphylinidae) from Taiwan. *Spec. Bull. Jpn. Soc. Coleopterol.*, Tokyo, (4): 335-340.