

The Anthribid Genus *Phloeopemon* (Coleoptera, Anthribidae) from Thailand¹⁾

Toshio SENOH

Department of Biology, Chuo University High School,
Koganei, Tokyo, 184 Japan

Abstract Three species of the anthribid genus *Phloeopemon*, *P. vitalisi* JORDAN, *P. acuticornis* (FABRICIUS) and *P. continentalis* JORDAN, stat. nov., are newly recorded from Thailand.

Phloeopemon SCHÖNHERR (1839, p. 159) is an isolated genus in the anthribid subfamily Anthribinae, erected for *Anthribus acuticornis* FABRICIUS from Sumatra. It comprises three species, and belongs to the tribe Phloeotragini (cf. MORIMOTO, 1972, p. 40). Up to the present, no species of the genus has been recorded from Thailand.

Through the courtesy of Dr. A. LEWVANICH and Mrs. S. CHUNRAM of the Entomology and Zoology Division, Ministry of Agriculture and Cooperatives, Thailand, Dr. M. TITAYAVAN of the Department of Entomology, Chiang Mai University, and Messrs. H. AKIYAMA, T. SHIMOMURA and M. NISHIMURA, I was able to examine several Thailand specimens of *Phloeopemon vitalisi* JORDAN originally described from Laos and *P. continentalis* JORDAN, stat. nov., from Assam. In this paper, I am going to record them together with specimens of *Phloeopemon* collected by myself in Thailand.

Before going further, I wish to express my sincere gratitude to Professor Y. WATANABE of the Laboratory of Entomology, Tokyo University of Agriculture, and Professor K. MORIMOTO of the Entomological Laboratory, Kyushu University, for their constant guidance and encouragement. I am much indebted to Dr. S.-I. UENO of the National Science Museum (Nat. Hist.), Tokyo, for his constant guidance and for kindly reading the original manuscript of the present paper, and to Dr. A. LEWVANICH, Mrs. S. CHUNRAM and Dr. M. TITAYAVAN in Thailand for loan of the valuable specimens used in this study. Deep gratitude is also due to Messrs. H. AKIYAMA, T. SHIMOMURA and M. NISHIMURA for their kindness in providing me with the valuable specimens.

1) This study is supported in part by the Study Leave System for Teachers of Chuo University High Schools.

Phloeopemon vitalisi JORDAN, 1923

(Fig. 1)

Phloeopemon Vitalisi JORDAN, 1923, Fn. ent. Indochine, Saigon, **6**: 72 (4♂♂, 2♀♀, Xien-Khouang, Laos).

Specimens examined. 1♂, Phamuang, Chiang Mai, N. Thailand, 29-IV-1959, JANTHONG leg.; 1♀, Fang, Chiang Mai, N. Thailand, 17-IV-1958, PHON leg.; 1♂, Doi Pa Hompok, Fang, Chiang Mai, N. Thailand, V-1991.

Distribution. North Thailand (new record), Laos.

Phloeopemon acuticornis (FABRICIUS, 1801)

Anthribus acuticorne FABRICIUS, 1801, Syst. Eleuth., **2**: 405 (Sumatra).

Phloeopemon acuticornis: FAHRAEUS, 1839, Gen. Curc., **5**: 160 (Sumatra).—LACORDAIRE, 1866, Gen. Coléopt., 488 (Sumatra).—JORDAN, 1897, Anni. Mus. Stor. nat. Genova, **38**: 624 (Sumatra); 1913, Rec. Ind. Mus., **8**: 198 (South India); 1916, Novit. zool., **23**: 359 (Tonkin, Annam).—WOLFRUM, 1929, Coleopt. Cat., (102): 5 (Sumatra, Borneo, S. India).

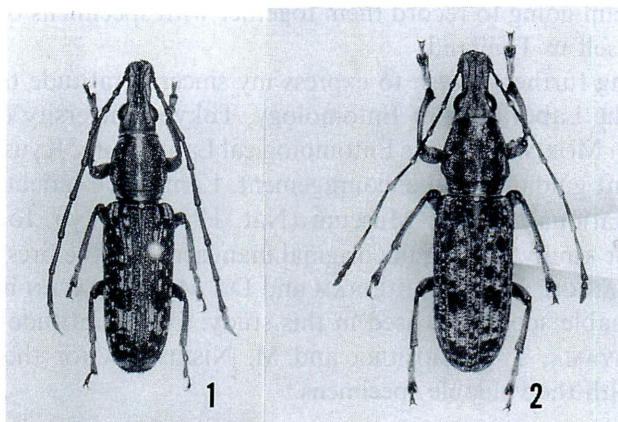
Specimens examined. 1♂, 1♀, Khao Chong N. P., Trang, S. Thailand, 8~12-VI-1983, T. SENOH leg.; 3♂♂, 2♀♀, 3~4 miles from Tapah, Cameron's Highlands, Perak, W. Malaysia, 4~9-VI-1981, T. SENOH leg.

Distribution. South Thailand (new record), West Malaysia (new record), Sumatra, Java, Borneo, South India.

Phloeopemon continentalis JORDAN, 1923, stat. nov.

(Fig. 2)

Phloeopemon acuticornis continentalis JORDAN, 1923 a, Novit. zool., **30**: 167 (Assam, Burma, Tonkin,



Figs. 1-2.—1, *Phloeopemon vitalisi* JORDAN, ♂, from N. Thailand; 2, *P. continentalis* JORDAN, ♂, from N. Thailand.

Annam); 1923 b, Fn. ent. Indochine, Saigon, **6**: 72 (Tonkin, Laos, Annam). — WOLFRUM, 1929, Coleopt. Cat., (102): 5 (Indochina).

Specimens examined. 4♂♂, 4♀♀, Doi Chiang Dao, Chiang Mai, N. Thailand, 25~26-V-1980, T. SENOH leg.; 1♂, Doi Suthep, Chiang Mai, N. Thailand, 3-VI-1980, T. SENOH leg.; 1♀, Doi Suthep, Chiang Mai, N. Thailand, 1-V-1982, T. SHIMOMURA leg.; 1♂, Wieng Ko Sai N. P., Phrae, N. Thailand, 18-V-1985, H. AKIYAMA leg.; 1♀, Doi Phu Kha, Pua, Nan, N. Thailand, V-1991; 1♀, Sam Ngow, Tak, NW. Thailand, 23-VI-1959, CHUA leg.; 1♂, 1♀, Ban Nang Bang, near Sai Yok N. P., Kanchanaburi, W. Thailand, 13-V-1985, H. AKIYAMA leg.; 1♂, Kanchanaburi, W. Thailand, 31-V-1962, AROON leg.; 1♂, Chanthaburi, E. Thailand, 15-V-1961, PHOL leg.; 1♂, 2♀♀, Ban Lamo, Trang, S. Thailand, 15~19-VI-1981, T. SENOH leg.; 1♂, 1♀, Ban Kachong, Trang, S. Thailand, 20-VI-1980, T. SENOH leg.; 1♂, Oudomxay, C. Laos, 9-VI-1994, Y. NISHIYAMA leg.

Distribution. Tonkin, Annam, Laos, Thailand (new record), Burma, Assam.

Notes. This species is very similar to *P. acuticornis* (FABRICIUS), but can be distinguished by the following characteristics: rostrum thicker and shorter, constricted dorso-basally, parallel-sided on antennal cavities; antennae thicker; pronotum widest at about basal fourth, almost rectilinear on lateral sides; anterior tibia curved, and with a large mucro in apical fourth to third in male, and so on.

The distributions of *P. continentalis* and *P. acuticornis* overlap each other in the Province of Trang, the southern part of Thailand.

要 約

妹尾俊男：タイ国から *Phloeopemon* 属の3種の記録。—— これまでタイ国から記録のなかった *Phloeopemon vitalisi* JORDAN, *P. acuticornis* (FABRICIUS) および *P. continentalis* JORDAN, stat. nov. の3種を記録した。また、*Phloeopemon* 属は、これまでタイ国からの記録がなかった。

References

- JORDAN, K., 1897. Anthribidae from the Islands of Engano, Mentawai and Sumatra, collected by Dr. E. MODIGLIANI. *Annl. Mus. civ. Stor. nat. Genova*, **38**: 623-643.
- 1913. Zoological results of the Abor expedition, 1911-12. Coleoptera, 5. Anthribidae. *Rec. Ind. Mus.*, **8**: 197-198.
- 1916. Anthribidae collected by Monsieur I. VITALIS DE SALVAZA in French Indo-China. *Novit. zool.*, **23**: 359-363.
- 1923 a. New eastern Anthribidae. *Novit. zool.*, **30**: 167-185.
- 1923 b. Les Anthribides de l'Indochine. *Fn. ent. Indochine, Saigon*, **6**: 71-113 (and *Opusc. Inst. sci. Indochine*, (1): 1-41).
- LACORDAIRE, M. T., 1866. Anthribides. *Genera des Coléoptères*, **7**: 476-620, 3 pls.
- MORIMOTO, K., 1972. A key to the genera of Oriental Anthribidae (Coleoptera). *Bull. Gov. For. Expt. Stn.*, (246): 35-54, 17 pls.
- SCHÖNHERR, C. J., 1839. Anthribides. *Genera et species Curculionidum*, **5**: 147-277.

- WOLFRUM, P., 1929. Anthribidae. In JUNK, W., & S. SCHENKLING (eds.), *Coleopterorum Catalogus*, pars 102 (pp. 3–145). W. Junk, Berlin.
- 1953. Anthribidae. In HINCKS, W. D. (ed.), *Coleopterorum Catalogus Supplementa*, pars 102 (pp. 3–63). W. Junk, 's-Gravenhage.

Elytra, Tokyo, **24** (1): 172, May 15, 1996

Occurrence of *Litocerus dorsalis* (Coleoptera, Anthribidae) in South Thailand

Toshio SENOH

Department of Biology, Chuo University High School,
Koganei, Tokyo, 184 Japan

Litocerus dorsalis was described by JORDAN (1894, p. 611) on the basis of the specimens collected from Perak, West Malaysia. There has been no other records than the original description, which was made more than one hundred years ago.

In 1993, I made several long collecting trips to the southern part of Thailand and obtained five specimens of this species in the Province of Nakhon Si Thammarat. I am going to record this species as being new to the fauna of Thailand. The collecting data of the specimens are as follows:

1 ♂, Nam Tok Pliw, near Thung Song, Nakhon Si Thammarat, 13~15-VIII-1993, T. SENOH leg.; 1 ♂, ditto, 14-IX-1993, T. SENOH leg.; 2 ♂♂, 1 ♀, ditto, 12~13-XII-1993, T. SENOH leg.

Distribution. South Thailand (new record), West Malaysia.

I wish to express my hearty thanks to Dr. S.-I. UÉNO of the National Science Museum (Nat. Hist.), Tokyo, for kindly reading the original manuscript of this brief paper.

Reference

- JORDAN, K., 1894. On Anthribidae in the museum of the Honourable Walter ROTHSCHILD. *Novit. zool.*, **1**: 591–651.