

- FELSENSTEIN, J., 1985. Confidence limits on phylogenies: an approach using the bootstrap. *Evolution*, **39**: 783–791.
- HEINZ, W., 1996. Neue *Carabus*-Arten aus Tibet (Coleoptera, Carabidae). *Coleoptera, Schwanfeld*, **14**: 19–26.
- HIGGINS, D.-G., A.-J. BLEASBY & R. FUCHS, 1992. Clustal V: Improved software for multiple sequence alignment. *Comput. Appl. Biosci.*, **8**: 189–191.
- IMURA, Y., 1996. A revised classification of the major divisions and subdivisions of *Carabus* (s. lat.) (Coleoptera, Carabidae). *Elytra, Tokyo*, **24**: 5–12.
- 1997. A second representative of *Pseudocoelabrus* (Coleoptera, Carabidae) discovered in southern Sichuan, China. *Ibid.*, **25**: 221–229.
- & K. MIZUSAWA, 1996. The *Carabus* of the World. In FUJITA, H. (ed.), *Mushi-Sha's Iconographical Series of Insects*, **2**. 261 pp., 84 pls. Mushi-sha, Tokyo. (In Japanese, with English book title and summary.)
- KIMURA, M., 1980. A simple method for estimating evolutionary rate of base substitutions through comparative studies of nucleotide sequences. *J. mol. Evol.*, **16**: 111–120.
- SAITOU, N., & M. NEI, 1987. The neighbor-joining method: a new method for reconstructing phylogenetic trees. *Mol. Biol. Evol.*, **4**: 406–425.
- SU, Z.-H., T. OHAMA, T. S. OKADA, K. NAKAMURA, R. ISHIKAWA & S. OSAWA, 1996 a. Phylogenetic relationships and evolution of the Japanese Carabinae ground beetles based on mitochondrial ND5 gene sequences. *J. mol. Evol.*, **42**: 124–129.
- , ———, ———, ———, ——— & ——— 1996 b. Geography-linked phylogeny of the *Damaster* ground beetles inferred from mitochondrial ND5 gene sequences. *Ibid.*, **42**: 130–134.
- SU, Z.-H., T. S. OKADA, S. OSAWA, B. DAVID, J.-L. DOMMERGUES & F. MAGNIEZ, 1996 c. Radiation of several Carabina groups (Coleoptera, Carabidae) inferred from the mitochondrial ND5 gene sequences. *Elytra, Tokyo*, **24**: 175–179.

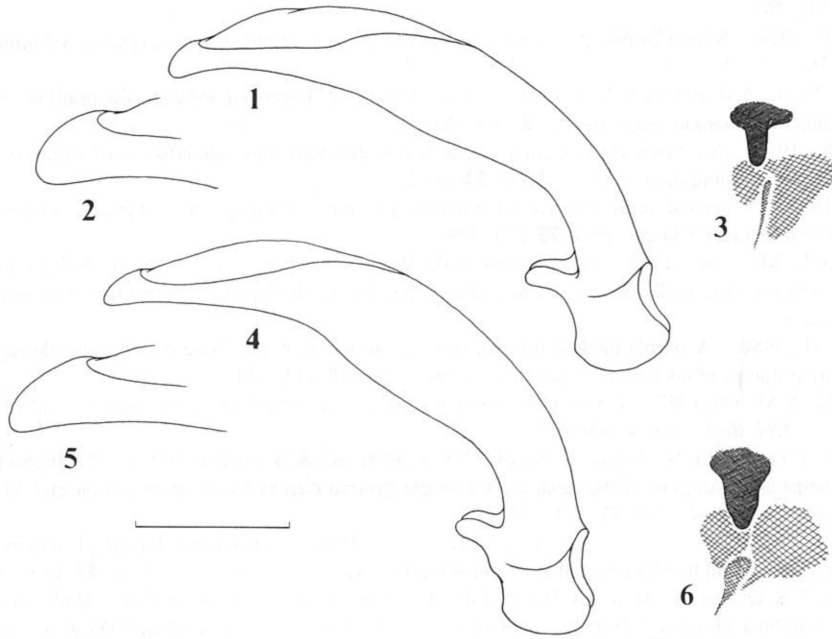
Elytra, Tokyo, **25** (1): 245–246, May 15, 1997

A New Subspecies of *Carabus* (*Eucarabus*) *nitididorsus* from South Korea

Yûki IMURA

Department of Gynecology, Tôkyû General Hospital,
Kita-senzoku 1–45–6, Ôta-ku, Tokyo, 145 Japan

Carabus nitididorsus ISHIKAWA et KIM, 1983 has been known monotypical, distributed only on the Chiri-san Mountains near the southern end of the Korean Peninsula. Early in the summer of 1994, I made a short collecting trip to Mt. Paegun-san, about 20 km distant to the south from the centre of the Chiri-san Mountains, and succeeded in obtaining the same species. The Paegun-san population is definitely different from the nominotypical *nitididorsus* in detailed structure of the male genital organ, and I will describe it as a new subspecies.



Figs. 1–6. Male genitalia of *Carabus (Eucarabus) nitididorsus* subsp.; 1–3, subsp. *nitididorsus* from the Chiri-san Mts.; 4–6, subsp. *paegunsanus* from Mt. Paegun-san; 1, 4, aedeagus in right lateral view; 2, 5, apical part of aedeagus in the same view; 3, 6, digitulus and ligulum in dorsal view. Scale: 2 mm for 1 & 4, 1 mm for 2, 3, 5, 6.

***Carabus (Eucarabus) nitididorsus paegunsanus* IMURA, subsp. nov.**

Carabus (Eucarabus) nitididorsus: IMURA & MIZUSAWA, 1996, *Mushi-Sha's Icon. Ser. Ins.*, **2**, pl. 4, fig. 34–3.

Description. 22.0–27.8 mm (including mandibles). Colour variation poorer than in the nominotypical subspecies: of the total 136 specimens examined, 112 are reddish coppery often with weak greenish tinge, and the remaining 24 are black with green-bluish or blue-purplish lustre. External appearance almost identical with that of the nominotypical subspecies, but clearly distinguishable from it by the genitalic features as follows: aedeagus a little more deeply concave ventrad at about apical third, its apical lobe longer and slenderer with the tip more sharply pointed; digitulus wider and robuster, which is the most noticeable character of the new subspecies, and ligulum also wider.

Type series. Holotype: ♂, Mt. Paegun-san, 900–1,200 m alt., in Kwang-yang-gun of eastern Chōllanam-do, South Korea, 9–VI–1994, to be preserved in the collection of the Department of Zoology, National Science Museum (Nat. Hist.), Tokyo. Paratypes: 72 ♂♂, 63 ♀♀ (including allotype), same data as for the holotype, in coll. Y. IMURA.

Notes. The present new subspecies is sympatric with such species as *Carabus (Tomocarabus) fraterculus jirisanensis* ISHIKAWA et KIM, *C. (Coptolabrus) jankowskii obtusipennis* ISHIKAWA et KIM and *C. (C.) smaragdinus branickii* TACZANOWSKI.