

- Staphylinidae). *Bull. natn. Mus. nat. Sci., Taichung*, (Spec. Publ.), (6): 145 pp.
- SMETANA, A., 1996. Revision of the tribes Quediini and Atanygnathini, Part III, Taiwan, Supplementum I. *Ibid.*, **8**: 23–28.
- 1997 a. Contributions to the knowledge of the Quediina (Coleoptera, Staphylinidae, Staphylinini) of China. Part 8. Quediini collected by S. UÉNO and Y. WATANABE in Yunnan. *Elytra, Tokyo*, **25**: 129–134.
- 1997 b. Two new species of the genus *Quedius* STEPHENS, 1829 (Coleoptera, Staphylinidae, Staphylinini, Quediina) from northern Vietnam. *Ibid.*, **26**: 123–128.
- STEPHENS, J. F., 1829. The nomenclature of British Insects; being a compendious list of such species as are contained in the Systematic Catalogue of British Insects, and forming a guide to their classification. 68 columns. Baldwin & Cradock, London.
- ZHAO Er-mi, & K. ADLER, 1993. Herpetology in China. 522 pp. New York Society for Study of Amphibians and Reptiles.

---

*Elytra, Tokyo*, **26** (1): 113–114, May 15, 1998

## A New *Titanocarabus* (Coleoptera, Carabidae) Discovered from Beijing, China

Yûki IMURA

Department of Gynecology, Tôkyû General Hospital, Kita-senzoku,  
1–45–6, Ôta-ku, Tokyo, 145–0062 Japan

and

Hong-Zhang ZHOU

Institute of Zoology, Chinese Academy of Sciences, 19 Zhongguancun Lu,  
Haidian, Beijing, 100080 China

In the summer of 1997, a short series of *Carabus* specimens were collected by Mr. H.-S. ZHOU (Chinese Academy of Sciences) from the western part of Beijing City, and were submitted to us for study. The collection contained a large species with the facies very similar to that of *C. titanus*. However, the two species cannot be identical with each other because of strikingly different aedeagal features. The Beijing one must be new to science as described below.

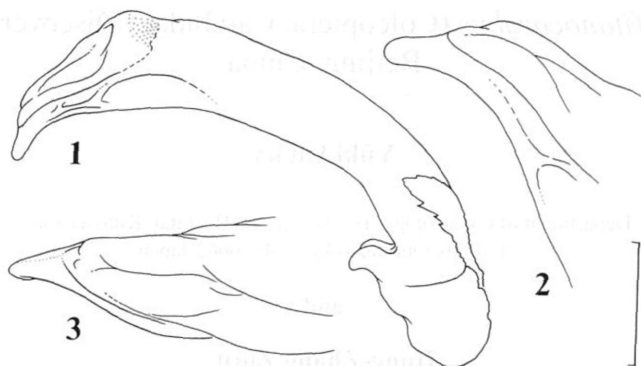
*Carabus (Titanocarabus) sui* IMURA et ZHOU, sp. nov.

(Figs. 1-3)

Length: 34.0–36.0 mm (including mandibles). Entirely black, though bearing weak purplish bronze tinge on elytra. Very similar to *C. (T.) titanus*, but differs from that species in the following respects: 1) antennae narrower, with the thiridium recognised from segment 5 to 9 far more shallowly concave; 2) pronotum with the lateral sides a little less remarkably margined; 3) elytra a little robuster, with each interval a little more strongly crenulate; 4) aedeagus markedly different in shape as shown in Figs. 1–3, which is the most noticeable diagnostic character of the new species, e.g., apical portion not bearing any lateral process as in *C. titanus*.

*Type series.* Holotype: ♂, Xiaolongmen [小龙门] in Mentougou [门头沟], western part of Beijing City, China, 19~22-VII-1997, Hai-Sheng ZHOU leg., to be preserved in the collection of the Institute of Zoology, Chinese Academy of Sciences, Beijing. Paratypes: 1 ♂, 1 ♀ (allotype), same data as for the holotype.

*Notes.* Judging from the DNA sequences observed in the so-called *Oreocarabus* complex (particulars of which will be reserved until the next paper by IMURA *et al.*), we adopt here the subgenus *Titanocarabus* for the new species, which is named after Dr. Zhi-Hui SU of JT Biohistory Research Hall, Osaka.



Figs. 1-3. Aedeagus of *Carabus (Titanocarabus) sui* sp. nov.; 1, right lateral view; 2, apical part in the same view; 3, ditto in dorsal view. Scale: 2 mm for 1, 1 mm for 2 & 3.