

- (DRURY) and *M. scutellatus* (SAY) (Coleoptera: Cerambycidae). *Can. Entomol.*, **86**: 465–470.
- HIRAI, I., 1987. A hybrid individual between *Parechthistatus gibber* and *Mesechthistatus taniguchii*. *Gekkan-Mushi, Tokyo*, (202): 33. (In Japanese.)
- & T. KINOSHITA, 1992. Hybrid individuals between *Mesechthistatus fujisanus* and *Parechthistatus grossus*. *Gekkan-Mushi, Tokyo*, (260): 10–12. (In Japanese.)
- KAWAJI, K., 1988. Hybridization of Phrissomini species through rearing. *Gekkan-Mushi, Tokyo*, (203): 33–35. (In Japanese.)
- KUBOTA, K., 1996. Movements of three *Carabus* (*Ohomopterus*) species and a hybrid population (Coleoptera, Carabidae). *Jpn. J. Ent.*, **64**: 861–869.
- KUSAMA, K., & M. TAKAKUWA, 1984. Genus *Ropica* PASCOE. In JPN. SOC. COLEOPTEROL. (ed.), *The Longicorn-Beetles of Japan in Color*, 389–392, pl. 57. Kôdansha, Tokyo. (In Japanese with English title.)
- MAKIHARA, H., 1985. Genus *Ropica* from Japan. Studies on Cerambycidae (Coleoptera) of Japan (4). *Coleopterists' News, Tokyo*, (67/68): 1–6. (In Japanese with English title.)
- 1987. Mating between *Anaglyptus subfasciatus* and *A. niponensis*. *Konchû to Shizen (Nature and Insects), Tokyo*, **22** (14): 23. (In Japanese.)
- SOTA, T., & K. KUBOTA, 1995. Interspecific mating in carabid beetles. *Konchû to Shizen (Nature and Insects), Tokyo*, **30** (2): 13–19. (In Japanese with English title.)
- TAKAKUWA, M., 1976. Issues on *Parechthistatus* and *Mesechthistatus* from Japan. (3). *Gekkan-Mushi, Tokyo*, (62): 17–22. (In Japanese.)

---

*Elytra, Tokyo*, **26** (1): 215–216, May 15, 1998

## Two New Records of Cerambycid Beetles (Coleoptera) from Yaku-shima Island, Southwest Japan

Keiji OKADA

Bioindicator Co., Ltd., Takada 3–16–4, Toshima-ku, Tokyo, 171–0033 Japan

In my recent collecting trip to Yaku-shima Island, Southwest Japan, I was able to find two unrecorded cerambycid beetles, *Pseudiphra apicalis* and *Sciades (Miaenia) nakanei*. They were collected by beating at the blighted branches on Seibu-rindô of the island. In this short report, I would like to record them as the first records of the species from Yaku-shima Island.

I wish to express my sincere thanks to Mr. Tatsuya NIISATO for his help in preparing the manuscript, and also to Mr. Hiroyuki YOSHITOMI for his help in field works.

### 1. *Pseudiphra apicalis* (SCHWARZER)

*Specimen examined.* 1 ♀, Seibu-rindô, Yaku-shima Is., Kagoshima Pref., Japan, 18–VII–1997, K. OKADA leg.

*Distribution.* Japan: Izu Is. (Miyake-jima Is., Mikura-jima Is.); Ôsumi Islands: Yaku-shima Is. (new record); Okinawa Is.: Okinawa-hontô Is.; Taiwan; Philippines: Luzon Is., Mindanao Is.

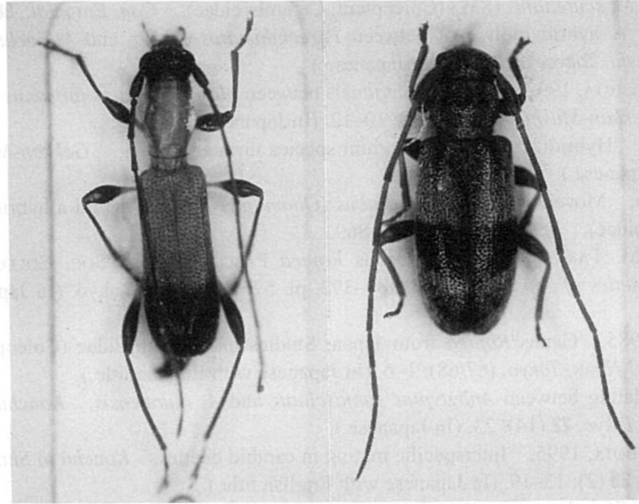


Fig. 1. *Pseudiphra apicalis* (SCHWARZER), ♀ (left), *Sciades (Miaenia) nakanei* (HAYASHI), ♂ (right); both from Yaku-shima Island of Southwest Japan.

*Notes.* This species has so far been known from Okinawa-hontô Island and its neighbourhoods, and also from Miyake-jima and Mikura-jima Islands of the Izu Islands, in the Japanese territory. The specimen examined shows a typical colour variation of *P. apicalis*, whose elytra are reddish yellow with black apical 2/5.

2. *Sciades (Miaenia) nakanei* (HAYASHI)

*Specimen examined.* 1 ♂, Seibu-rindô, Yaku-shima Is., Kagoshima Pref., Japan, 17–VII–1997, K. OKADA leg.

*Distribution.* Japan: Ôsumi Islands: Tanega-shima Is., Yaku-shima Is. (new record); Tokara Isls.: Nakano-shima Is.

*Notes.* *Sciades nakanei* has hitherto been recorded from Nakano-shima Island of the Tokara Islands and Tanega-shima Island of the Ôsumi Islands. This record is a second locality of the species in the Ôsumi Islands.

#### References

- KUSAMA, K., & M. TAKAKUWA, 1984. Cerambycinae. In: Jpn. Soc. Coleopterol. (ed.), *The Longicorn-Beetles of Japan in Color*, pp. 249–351, pls. 26–43. Kodansha, Tokyo. (In Japanese with English title.)
- NIISATO, T., 1992. Cerambycinae. In: OHBAYASHI, N., M. SATÔ & K. KOJIMA (eds.), *An Illustrated Guide to Identification of Longicorn Beetles of Japan*, pp. 117–146, pls. 467–534. Tokai Univ. Press, Tokyo. (In Japanese with English title.)
- OHBAYASHI, N., 1984. *Sciades*. In: Jpn. Soc. Coleopterol. (ed.), *The Longicorn-Beetles of Japan in Color*, pp. 503–506, pl. 86. Kodansha, Tokyo. (In Japanese with English title.)
- 1992. *Sciades*. In: OHBAYASHI, N., M. SATÔ & K. KOJIMA (eds.), *An Illustrated Guide to Identification of Longicorn Beetles of Japan*, p. 190, pls. 628–630. Tokai Univ. Press, Tokyo. (In Japanese with English title.)