

なかに、マンボウオサムシ *Carabus (Acathaicus) alexandrae* とニシキオサムシ *C. (Aristocarabus) viridifossulatus* の新亜種をみいだしたので、前者に subsp. *fantingi* nov., 後者に subsp. *rizeanus* nov. という名を与えて記載した。

References

- DEUVE, Th., 1990. Carabidae nouveau ou mal connus des provinces chinoises du Hubei et du Sichuan (Coleoptera, Carabini, Cychrini). *L'Entomologiste*, **46**: 109–119.
- 1995. Descriptions de nouveaux *Carabus* L. et *Cychrus* F. de Chine (Coleoptera, Carabidae). *Coléoptères*, **1** (4): 37–57.
- IMURA, Y., & K. MIZUSAWA, 1996. The *Carabus* of the World. In FUJITA, H. (ed.), *Mushi-Sha's Iconographical Series of Insects*, 2. 261 pp., 84 pls. Mushi-sha, Tokyo. (In Japanese, with English book title and summary.)

Elytra, Tokyo, **26** (2): 255–256, November 15, 1998

Exocentrus taniguchii (Coleoptera, Cerambycidae) Newly Recorded from the Japanese Fauna

Shigeo TSUYUKI

Zushi 7-1-24, Zushi City, Kanagawa, 249-0006 Japan

Exocentrus taniguchii MAKIHARA was described from Lanhsu Island off southern Taiwan, and has so far been unknown from the main island of Taiwan and the other neighboring areas. I had an opportunity to examine the *Exocentrus* species obtained from Yonaguni-jima Island, the westernmost island of the Yaeyama Island Group of the Ryukyus. Faunal affinity between Lanhsu and Yonaguni-jima is well known. *Exocentrus taniguchii* is another example of this from the zoogeographical viewpoint.

In the following lines, I am going to report the species as being new to the fauna of Japan. I express my sincere gratitude to Mr. Hiraku YOSHITAKE of Tokyo University of Agriculture and Kenichi EMOTO of Sugamo, Tokyo, for their offer of invaluable material.

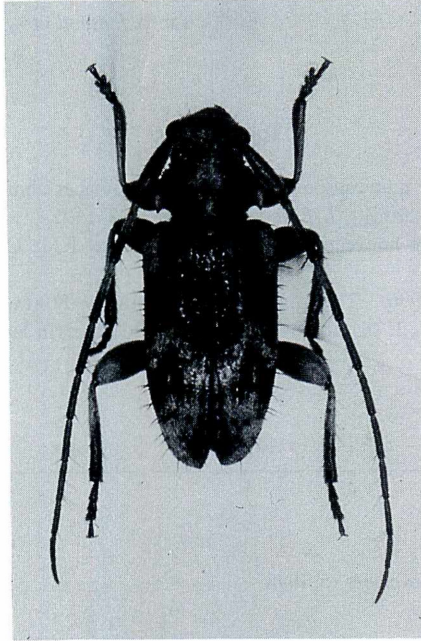


Fig. 1. *Exocentrus taniguchii* MAKIHARA, male, from Yonaguni-jima Island, the Ryukyus.

***Exocentrus taniguchii* MAKIHARA**

[Japanese name: Ikarimon-keshi-kamikiri]

(Fig. 1)

Exocentrus taniguchii MAKIHARA, 1986, in MAKIHARA & NIISATO, Misc. Rept. Hiwa Mus. nat. Hist., (24), pp. 13–16, figs. 11 B, 12 B-1, B-2, B-3, B-4, 13 B-1, B-2, B-3; type locality: Hungtou, Lanhsu Is.

Specimen examined. 1 ♂, Mt. Urabu-dake, Yonaguni Is., Yaeyama Islands, Okinawa Pref., Japan, 12–IV–1997, H. YOSHITAKE leg.

Notes. The single male specimen examined agrees well with the original description by MAKIHARA (1986). It seems to be a larger individual (7.0 mm in length), since the two type males from Lanhsu Island are 5.1–5.3 mm in length. This is also a rather large species among the Japanese members of the genus, and is almost of the same size as the medium-sized individuals of *E. guttulatus* or the large ones of *E. fisheri*.