

Additional Records of *Coeliodes galloisi*  
(Coleoptera, Curculionidae)

Hiraku YOSHITAKE

Laboratory of Entomology, Tokyo University of Agriculture,  
Sakuragaoka 1–1–1, Setagaya-ku, Tokyo, 156–8502 Japan

The ceutorhynchine weevil *Coeliodes galloisi* was described by HUSTACHE (1916) from mont. Ibuki and Chûzenji in Honshu, Japan. This species seems to be rare, and has not been re-discovered since original description until now. Recently, I had an opportunity to examine additional specimens of the species, which are collected on the mountainous area of eastern Japan, as recorded below.

I wish to express my hearty thanks to Messrs. Masami HORIKAWA, Yutaka NOTSU and Dr. Hiroaki KOJIMA of Kyushu University for their kind offer of invaluable specimens.

*Coeliodes (Brevicoeliodes) galloisi* HUSTACHE

(Fig. 1)

*Coeliodes galloisi* HUSTACHE, 1916, *Annals. Soc. ent. Fr.*, **85**: 116.

*Coeliodes (Coeliodinus) galloisi*: COLONNELLI, 1986, *Fragm. ent. Roma*, **18**: 419–439.

*Coeliodes (Brevicoeliodes) galloisi*: KOROTYAEV, 1997, *Ent. Obozr.*, **76**: 626.

*Specimens examined.* 1 ♂, Mikawa-rindou, Hinoemata, Fukushima Pref., 7–VI–1995, M. HORIKAWA leg.; 1 ♀, Funamata-rindou, Hinoemata, Fukushima Pref., 7–VII–1997, M. HORIKAWA leg.; 1 ♂, 2 ♀♀, Daigatake-rindou, Hakone, Kanagawa Pref., 2–VI–1989, M. HORIKAWA leg.; 3 ♀♀, same locality, 27–VI–1992, M. HORIKAWA leg.; 1 ♂, 1 ♀, Kamiyu, Hakone, Kanagawa Pref., 17–V–1991, M. HORIKAWA leg.; 1 ♂, 1 ♀, Mizunoki-rindou, W. Tanzawa, Kanagawa Pref., 27–V–1993, H. AKIYAMA leg.; 1 ♂, Komotsurushi-koushourin, 700 m alt., Yamakita, Kanagawa Pref., 15–VII–1993, T. HAMAGUCHI leg.; 1 ♂, Ohdananokashira, 1,200 m alt., Yamakita, Kanagawa Pref., 31–V–1993, T. HAMAGUCHI leg.; 1 ♀, Mt. Mikuni-yama, Tanzawa, Kanagawa Pref., 23–V–1994, Y. HIRANO leg.; 1 ♂, Myôjin-tôge, Tanzawa, Kanagawa Pref., 13–V–1994, Y. HIRANO leg.; 1 ♂, 1 ♀, Kanayama-daira, Yamanashi Pref., 28–VI–1991, H. KOJIMA leg.

*Distribution.* Japan (Honshu).

*Biology.* Unknown.

*Remarks.* This species is easily distinguished from other *Coeliodes* weevils by a combination of the following character states: body quite broad and strongly convex, elytra with a yellowish grey postscutellar patch, and front tibia with exterior expansion extending a little beyond apical third.

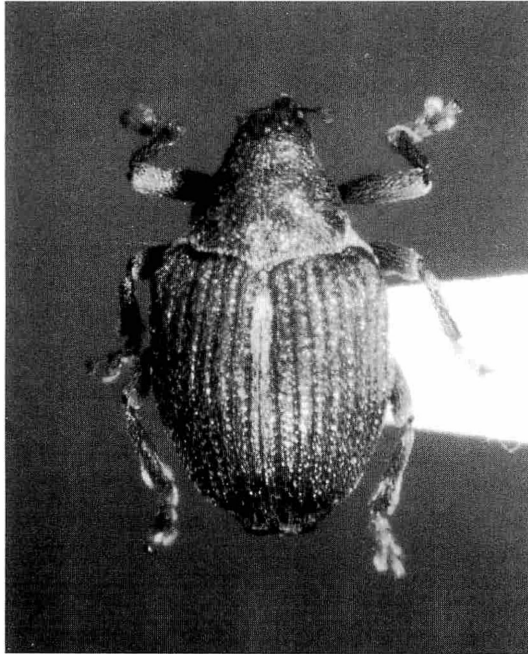


Fig. 1. *Coeliodes galloisi* HUSTACHE, ♂, from Hinoemata in Fukushima Pref.

### References

- COLONNELLI, A., 1986. Note sistematiche e sinonimiche su alcuni Ceutorhynchinae (Coleoptera, Curculionidae). *Fragm. ent., Roma*, **18**: 419–439.
- HUSTACHE, A., 1916. Synopsis des Ceuthorrhynchini du Japon. *Annl. Soc. ent. Fr.*, **85**: 107–144.
- KOROTYAEV, B. A., 1997. Review of the weevil genus *Coeliodes* SCHOENH. (Coleoptera, Curculionidae) of the Far East. *Ent. Obozr.*, **76**: 613–630. (In Russian, with English title.)