

- MIWA, Y., 1929. The elaterid-fauna of Loo-Choo. *Trans. nat. Hist. Soc. Formosa*, **19**: 339–351.
- 1934. The fauna of Elateridae in the Japanese Empire. *Dept. Agric. Gov. Res. Inst. Formosa*, (65): 1–289, 9 pls.
- 大平仁夫, 1962. 日本産コメツキムシ科の幼虫の形態学的ならびに分類学的研究. 189 pp., 61 pls.
- 1995. 日本産オオアオコメツキ類について. 月刊むし, (187): 11–13.
- 1996. 東南アジアのオオヒゲコメツキについて. 同上, (299): 15–18.
- 1998. アマミヒゲコメツキの幼虫について. 北九州の昆虫, **45**: 18.
- STIBICK, J. N. L., 1979. Classification of the Elateridae (Coleoptera), relationships and classification of the subfamilies and tribes. *Pacif. Ins.*, **20**: 145–186.

Elytra, Tokyo, **27** (1): 165–166, May 15, 1999

Additional Records of *Coeliodes zinovjevi* (Coleoptera, Curculionidae, Ceutorhynchinae) from Japan

Hiraku YOSHITAKE

Laboratory of Entomology, Tokyo University of Agriculture,
Sakuragaoka 1-1-1, Setagaya-ku, Tokyo, 156-8502 Japan

The ceutorhynchine weevil *Coeliodes zinovjevi* was described by KOROTYAEV (1997) from the Russian Far East and Kyoto in Honshu, Japan. This species has not been recorded since original description. Recently, I had an opportunity to examine additional specimens of the species collected in the Islands of Honshu and Shikoku, Japan, as recorded below.

I wish to express my hearty thanks to Mr. Kenichi EMOTO, Mr. Masami HORIKAWA, Dr. Masahiro SAKAI and Dr. Hiroaki KOJIMA for their kind offer of invaluable specimens.

Coeliodes (Coeliodes) zinovjevi KOROTYAEV

(Fig. 1)

Coeliodes (Coeliodes) zinovjevi KOROTYAEV, 1997, Ent. Obozr., **76**: 627.

Specimens examined. 1 ♂, Aka-numa, Nikkō, Gunma Pref., 9–VIII–1982, M. TAO leg.; 1 ♀, Mt. Meshimori-yama, Yamanashi Pref., 22–VII–1970, Y. KITSUKI leg.; 1 ♀, Itabashi, Minamimaki, Nagano Pref., 5–VIII–1996, M. HORIKAWA leg.; 1 ♂, 1 ♀, Bingo-Mikawa, Hiroshima Pref., 18–VI–1955, T. YANO leg.; 1 ♀, Minokoshi, Tokushima Pref., 22–VII–1965, M.

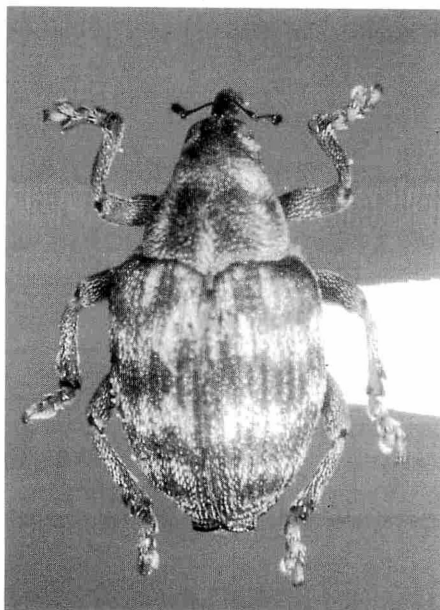


Fig. 1. *Coeliodes (Coeliodes) zinovjevi* KOROTYAEV, female, from Minamimaki, Nagano Pref.

SAKAI leg.; 21 ♂♂, 16 ♀♀, Mt. Ishizuchi-yama, Ehime Pref., 17–VII–1993, H. KOJIMA leg.

Distribution. Japan : Honshu, Shikoku (new record); Russian Far East.

Notes. This species is similar to *C. nakanoensis* HUSTACHE, but cannot be confused with the latter by the following features: metepisterna covered with glossy yellowish grey scales in the antero-marginal part, venter in the male with the second ventrite devoid of median yellowish scaly patch, and the fifth ventrite shallowly depressed transversely in the middle, its posterior margin not fringed with long erect setae. Biology of the species is unknown.

Reference

KOROTYAEV, B. A., 1997. Review of the weevil genus *Coeliodes* SCHOENH. (Coleoptera, Curculionidae) of the Far East. *Ent. Obozr.*, **76**: 613–630. (In Russian, with English title.)