

A New Species of *Dacne* (Coleoptera, Erotylidae)
from Chejudo Island off South Korea

Hisashi ASHIDA

8–3–406, Uzumasa Kitano-cho, Ukyo-ku, Kyoto, 616–8182 Japan

and

Choong-Gon KIM

JT Biohistory Research Hall, 1–1, Murasaki-cho, Takatsuki, Osaka, 569–1125 Japan

Abstract A new erotylid beetle, *Dacne osawai* sp. nov., is described from Mt. Halla, Chejudo Is., off South Korea. This new species is similar to *D. japonica* CROTCH in general coloration, but easily distinguished from the latter by the slender body, the form of elytral markings, strongly punctured dorsal surface and the structure of the male genitalia.

Up to the present, three species of the genus *Dacne* have been recorded from the mainland of Korea. They are *D. fungorum nigrocephala*, *D. picta* and *D. zonaria* (CHÛJÔ, CHÛJÔ & LEE, 1993). However, there is no record of *Dacne* species from Chejudo Is., off South Korea. In 1998, the junior author obtained materials of an erotylid beetle belonging to the genus *Dacne* from the mountain area of Chejudo Is. Through the courtesy of Dr. Syozo OSAWA, the senior author had an opportunity to examine a series of these materials. After a careful study, it has become clear that this species is new to science, as will be described in this paper.

Before going further, we would like to express our sincere gratitude to Dr. Syozo OSAWA of JT Biohistory Research Hall, Takatsuki, Osaka, for his kind guidance in our taxonomic study. Heartly thanks are also due to Mr. Sai-Ho JUNG of Cheju Folklore and Natural History Museum for his collaboration in field research, and Dr. Masahiro KON of the University of Shiga Prefecture for taking photographs of scanning electron microscope (SEM).

Dacne (s. str.) *osawai* ASHIDA et KIM, sp. nov.

(Figs. 1–5)

Length: 2.75–3.75 (mean: 3.30) mm. Width: 1.20–1.60 (mean: 1.40) mm.

Similar to *D. japonica* CROTCH (1873, p. 188; M. CHÛJÔ, 1969, pp. 78, 80, pl. 2, fig. 1) in general coloration, but distinguished from the latter by the slender body, the

form of elytral markings, strongly punctured dorsal surface, less convex pronotum and robust median lobe of male genitalia.

Body elongate-oblong, about 2.35 times as long as width, moderately convex on dorsum. Head, pronotum, scutellum and ventral surface red-brown, lustrous; antennae, mouth-parts and legs red-brown; elytra shining black, with two large transverse red-brown patches, each lying obliquely from the humeral part to the suture, joining each other at suture, not occupying just humeral part, their front and hind margins almost straight.

Head somewhat sparsely punctured, though more strongly than in *D. japonica*; compound eyes larger than in *D. japonica*; head width about 1.58 times as wide as interocular distance; clypeus coarsely punctured, its front margin slightly emarginate with fine pubescence; mouth-parts as in *D. japonica*.

Antennae with eleven segments, a little more slender than in *D. japonica*; the 1st segment robust; the 2nd as long as width; the 3rd cylindrical, 1.5 times as long as width, longer than 2nd and 4th; the 4th and the 5th as long as width; the 6th and the 7th wider than length; the 8th subtriangular, twice as wide as length; terminal three segments forming a club, wearing yellow-white pubescence; the 9th twice as wide as length; the 10th about 3 times as wide as length; the 11th 1.6 times as wide as length, slightly projecting outward.

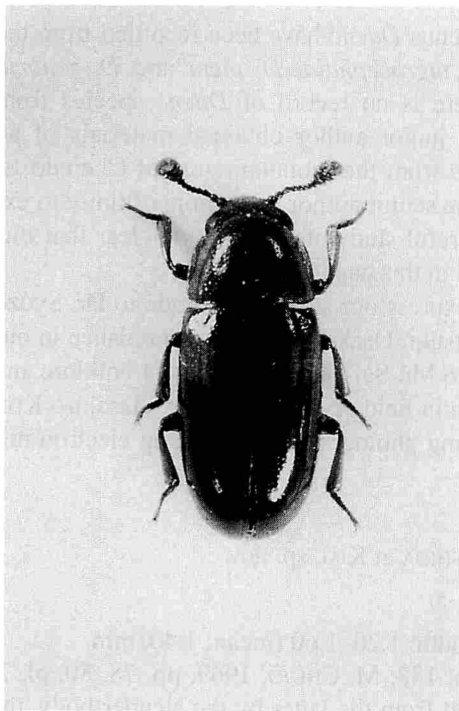
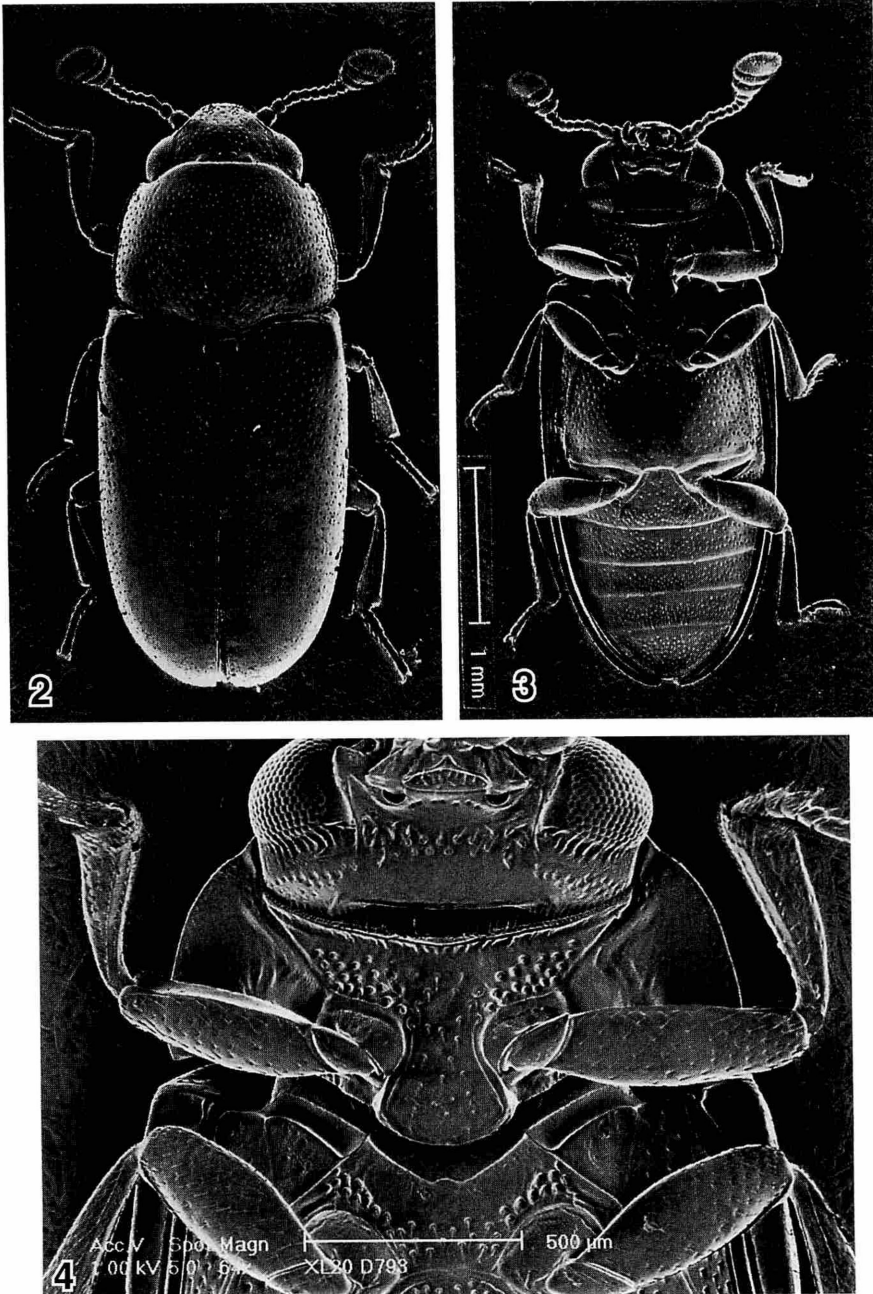


Fig. 1. *Dacne* (s. str.) *osawai* ASHIDA et KIM, sp. nov., ♂, from Mt. Halla; dorsal view.

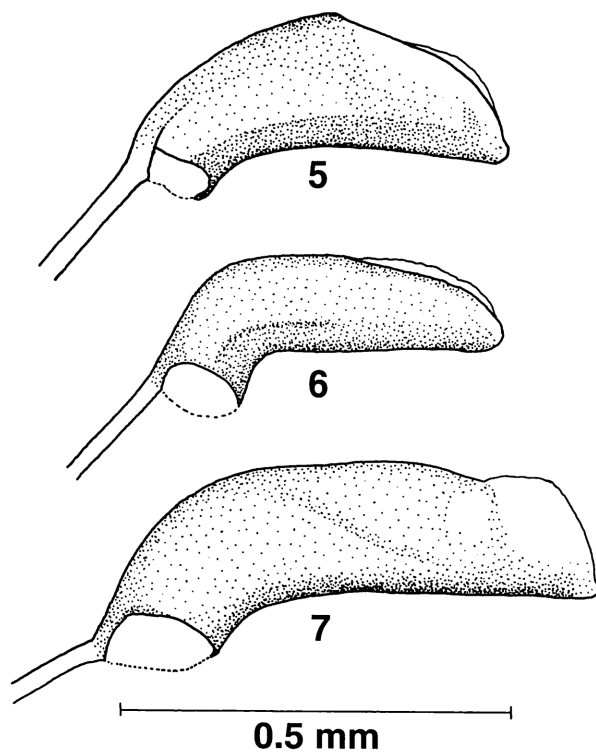


Figs. 2–4. SEM of *Dacne* (s. str.) *osawai* ASHIDA et KIM, sp. nov., ♂, from Mt. Halla; dorsal view (2), ventral view (3), and prosternum (4).

Pronotum transverse, about 1.42 times as wide as length in median line, moderately convex, closely and strongly punctured; sides ridged, feebly rounded, gently narrowed in front; anterior margin arcuate in middle area and emarginate on each side; front angles projected forward though blunt; posterior margin ridged, arched rearward in middle area, sinuate at each side; hind angles obtuse. Scutellum subpentagonal with a few fine punctures.

Elytra a little wider than prothorax, slightly widened from the base, widest at about three-eighths from the base, then gently tapered to apices, 1.58 times as long as its greatest width; the dorsal surface convex, striate-punctate, more sparsely punctured than in pronotum.

Prosternum rather sparsely punctured, procoxal lines short, not meeting each other in apical part, prosternal process as long as width, the sides and posterior margin distinctly ridged, surface flattened and very sparsely punctured. Mesosternum coarsely but strongly punctured. Metasternum strongly punctured in side areas, finely in middle area; mesocoxal lines absent. Abdomen with each sternite sparsely punctured in basal half, strongly and closely in apical half with fine pubescence; metacoxal lines well-marked obliquely rearward, not reaching the apical margin of the 1st sternite.



Figs. 5–7. Median lobe of male genitalia, left lateral view, of *Dacne* species; *Dacne osawai* ASHIDA et KIM, sp. nov., from Mt. Halla (5), *D. japonica* CROTCH (6), and *D. picta* CROTCH (7).

Legs more slender than in *D. japonica*; tarsi cylindrical, the 5th segment as long as the four basal segments put together.

Male genitalia as illustrated in Fig. 5; median lobe heavily sclerotized, about two-elevenths as long as elytra, robuster, shorter and less strongly bent toward the ventral side at base than in *D. japonica*.

Type series. Holotype: ♂, allotype: ♀, 4-VII-1998, C.-G. KIM leg. Paratypes: 10♂♂, 14♀♀, same data as holotype. The holotype and allotype are preserved in the collection of the Cheju Folklore and Natural History Museum. Two paratypes are in the collection of the National Science Museum (Nat. Hist.), Tokyo, and the others in the authors' collection.

Type locality. Tonneko, 1,500m alt., Mt. Halla, Chejudo Is., off South Korea.

Notes. The present new species is similar to *D. japonica* CROTCH distributed in Japan, but is easily distinguished from the latter species by the characteristics described above.

The species also resembles *D. picta* CROTCH in the structure of the body, but distinguishable by the coloration of the pronotum and elytra, and the structure of the male genitalia.

The type specimens of this new species were obtained from a kind of brown rot fungi (*Paxillus pannoides* ?) on a living pine tree (*Pinus thunbergii*).

要 約

芦田 久・金 衝坤：韓国濟州島産ホソオオキノコムシ属の1新種。—— 濟州島漢拏山（標高1,500m）で採集されたホソオオキノコムシ属の一種を、*Dacne osawai* ASHIDA et KIMと命名して記載した。本種は色彩がニホンホソオオキノコムシ *Dacne japonica* CROTCH に似ているが、体形、上翅の斑紋の形、背面の点刻、雄交尾器の構造などにより容易に識別できる。

References

- CHÛJÔ, M., 1969. Fauna Japonica, Ins.-Col.-Erotyl. 316 pp. Academic Press of Japan, Tokyo.
- & M. T. CHÛJÔ, 1988. A catalog of the Erotylidae (Insecta, Coleoptera) from the Old World (excl. the Ethiopian Region). *Esakia, Hikosan*, (26): 139-185.
- CHÛJÔ, M. T., M. CHÛJÔ & C. E. LEE, 1993. Erotylidae from Korea (Insecta, Coleoptera). *Ibid.*, (33): 99-108.
- & C. E. LEE, 1992. Erotylidae from Chejudo Island. *Ibid.*, (32): 25-30.
- CROTCH, G. R., 1873. A descriptive list of Erotylidae, collected by Geo. LEWIS, Esq., in Japan. *Entomologists' mon. Mag.*, 9: 184-189.
- LEWIS, G., 1887. A list of fifty Erotylidae from Japan, including thirty-five new species and four genera. *Ann. Mag. nat. Hist.*, (5), 20: 53-73.
- NIKITSKY, N. B., & A. V. KOMPANTZEV, 1995. The new species of pleasing fungus beetles (Coleoptera, Erotylidae) from the Russian Far East with the comments on the distribution and biology of some other species. *Zool. Zh.*, 74(6): 83-92. (In Russian.)