

- Guangxi, Chine (Adephaga, Trechidae). *Bull. Soc. ent. Fr.*, **98**: 291–296.
- DEUVE, Th., 1996. Descriptions de trois Trechinae anophtalmes cavernicoles dans un karst du Hunan, Chine [Coleoptera, Trechidae]. *Revue fr. Ent.*, (N.S.), **18**: 41–48.
- UÉNO, S.-I., 1997. A new aphaenopsoid trechine beetle (Coleoptera, Trechinae) from Yunnan, Southwest China. *J. speleol. Soc. Japan*, **22**: 14–23.
- 1998 a. Two new genera and species of anophthalmic trechine beetles (Coleoptera, Trechinae) from limestone caves of southeastern Guizhou, South China. *Elytra, Tokyo*, **26**: 37–50.
- 1998 b. Notes on *Dongodytes* (Coleoptera, Trechinae), with description of a new species. *J. speleol. Soc. Japan*, **23**: 1–15.
- & J. RAN, 1998. Notes on *Sinaphaenops* (Coleoptera, Trechinae), with descriptions of two new species. *Elytra, Tokyo*, **26**: 51–59.
- & F. WANG, 1991. Discovery of a highly specialized cave trechine (Coleoptera, Trechinae) in Southeast China. *Ibid.*, **19**: 127–135.
- VIGNA TAGLIANTI, A., 1997. A new genus and species of troglobitic Trechinae (Coleoptera, Carabidae) from southern China. *Int. J. Speleol.*, **25** [for 1996]: 33–41.

---

*Elytra, Tokyo*, **27** (2): 633–634, November 13, 1999

## A New *Cychropsis* (Coleoptera, Carabidae) from Mt. Namcha Barwa in Southeast Tibet

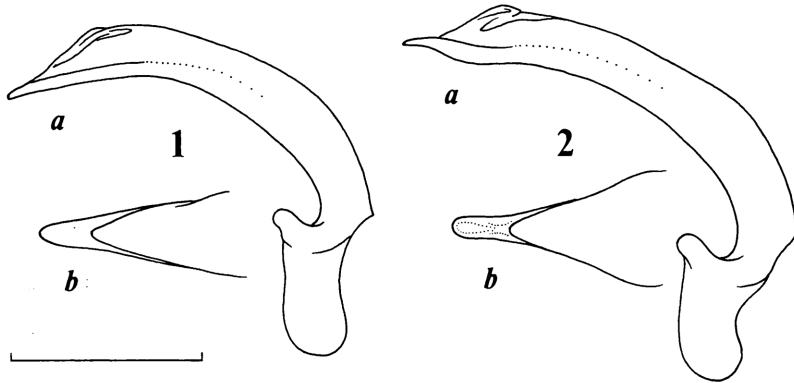
Yûki IMURA

Department of Gynecology, Tôkyû General Hospital, Kita-senzoku,  
1–45–6, Ôta-ku, Tokyo, 145–0062 Japan

Through the courtesy of Mr. Jan FARKAČ (Prague), I recently had an opportunity to examine the *Cychropsis* specimens collected on Mt. Namcha Barwa in Southeast Tibet. Though resembling *C. businskyi*, the species in question bears several peculiarities which seem to be of specific importance. It is therefore described as follows.

### *Cychropsis namchabarwana* IMURA, sp. nov.

*Description.* Length: 15.8–18.4 mm (including mandibles). Entirely black and rather strongly polished, with a faint dark bluish tinge on the dorsal surface. Closely allied to *Cychropsis businskyi* DEUVE (1992, p. 272, figs. 16, 21), but distinguishable from it by the following points: 1) body a little larger in size and slenderer; 2) vertex much less frequently punctate; 3) antennae longer, extending beyond basal three-fifths of elytra in male; 4) pronotum with the disc



Figs. 1–2. Male genitalia of *Cychropsis* spp. — 1, *Cychropsis businskyi* DEUVE from Pass Sêrkyim La (NE. of Nyingchi); 2, *C. namchabarwana* sp. nov. from Mt. Namjagbarwa Feng; a, aedeagus in right lateral view; b, apical part of aedeagus in dorsal view. Scale: 2 mm for a, 1 mm for b.

more sporadically punctate, hind angles more sharply pointed, and marginal setae absent; 5) striae between elytral intervals more deeply impressed containing larger punctures; 6) aedeagus different in shape as shown in Fig. 2, less strongly bent ventrad in apical portion whose ventral margin is remarkably sinuate in lateral view; 7) appendages obviously longer and slenderer, above all in male foretibiae and foretarsi.

*Type series.* Holotype: ♂, Mt. Namjagbarwa Feng [南迦巴瓦峰] (=Mt. Namcha Barwa) at an elevation of 4,400 m, near the northern end of Mêdog Xian [墨脱县] in Nyingchi Diqu [林芝地区], Southeast Tibet (Xizang), VI-1998, in coll. Department of Zoology, National Science Museum (Nat. Hist.), Tokyo. Paratypes: 15 ♂♂, 5 ♀♀ (including allotype), same data as for the holotype, in colls. Y. IMURA, K. MIZUSAWA, J. FARKAČ and A. PLUTENKO.

### References

- DEUVE, Th., 1992. Descriptions de nouveaux *Carabus*, *Cychropsis* et *Cychnus* de Chine (Coleoptera, Carabidae). *Lambillionea*, (92): 267–278.
- ROESCHKE, H., 1907. Monographie der Carabiden — Tribus Cychrini. *Anns. Mus. natn. hung.*, **5**: 99–277.