

本論文においてはじめて図示，記載された。

References

- BREUNING, S., 1932-'37. Monographie der Gattung *Carabus* L. *Best.-Tab. eur. Coleopt.*, (104–110): 1–1610, 41 pls. Reitter, Troppau.
- IMURA, Y., 1995. New or least known carabid beetles (Coleoptera, Carabidae) from the Dabashan Mountains at the northeastern end of Sichuan Province, Central China. *Elytra, Tokyo*, **23**: 119–128.
- 1996. Three new taxa of the genus *Carabus* (s. lat.) from Sichuan Province, Central China. *Nature & Insects, Tokyo*, **31**(3): 34–38. (In Japanese, with English title and description.)
- 1999. Findings from my collecting trip to the Micang Shan Mountains in Northeast Sichuan and Liuba Xian in Southwest Shaanxi, China. *Gekkan-Mushi, Tokyo*, (345): 8–15. (In Japanese, with English title.)
- , H.-Z. ZHOU & Z.-H. SU, 1999. A remarkable new Procrustimorphi carabid beetle (Coleoptera, Carabidae) from Shennongjia in western Hubei, Central China. *Ibid.*, (341): 2–5. (In Japanese, with English title and description.)

Elytra, Tokyo, **28** (1): 7–8, May 15, 2000

A New Record of *Themus ishigakiensis* (Coleoptera, Cantharidae) from Iriomote-jima Island, Southwest Japan

Yûichi OKUSHIMA¹⁾ and Masataka SATÔ²⁾

¹⁾Kurashiki Museum of Natural History, Chûô 2–6–1, Kurashiki-shi,
Okayama Pref., 710–0046 Japan

²⁾Laboratory of Nature Conservation, Graduate School of Nagoya Women's University,
Mizuho-ku, Nagoya, 467–8610 Japan

Themus (Haplothemus) ishigakiensis OKUSHIMA, 1991, was described from Ishigaki-jima Island, Southwest Japan. This species has never been recorded from other localities until now, though it has a large-sized body and beautiful blue elytra.

Recently, we were able to examine one male specimen of this species from Iriomote-jima Island, lying to the west of Ishigaki-jima Island. We compared it with the type series from Ishigaki-jima Is., and found no remarkable morphological difference between them, including the male genitalia. This is the first record of the genus *Themus* MOTSCHULSKY from Iriomote-jima Is.

We thank Mr. Masaaki KIMURA of Naha City for his kindness in supplying us with the interesting material.

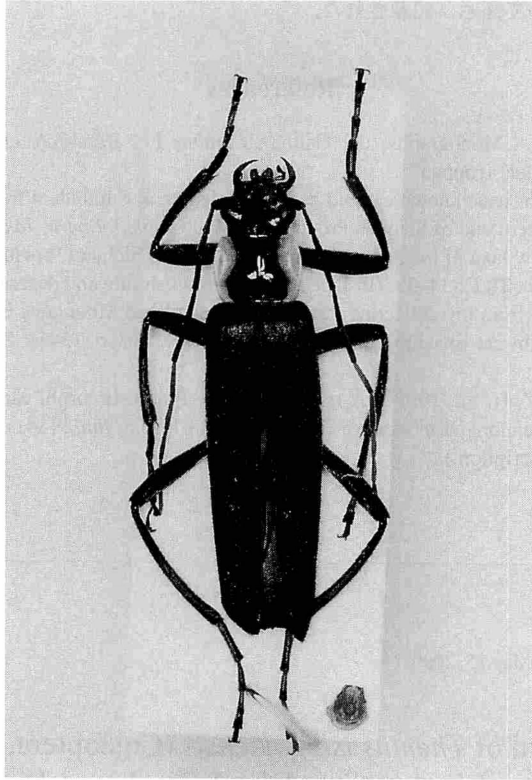


Fig. 1. Male of *Themus (Haplothemus) ishigakiensis* OKUSHIMA from Iriomote-jima Is., the Ryukyus.

***Themus (Haplothemus) ishigakiensis* OKUSHIMA**

Themus (Haplothemus) ishigakiensis OKUSHIMA, 1991, *Elytra*, Tokyo, **19**: 196, figs. 1–5.

Specimen examined. 1 ♂, Ôtomi, Iriomote-jima Is., Ryukyus, 9–II–1999, M. KIMURA leg., at light.

Depository of the specimen. The specimen recorded above is preserved in the collection of the Kurashiki Museum of Natural History.

Distribution. Ryukyu Islands (Ishigaki-jima Is., Iriomote-jima Is. – new record).

Reference

OKUSHIMA, Y., 1991. A new cantharid beetle of the genus *Themus* (Coleoptera, Cantharidae) from Ishigaki Island, Southwest Japan. *Elytra*, Tokyo, **19**: 195–199.