

A New Record of *Thalassoduvallius masidai masidai* S. UÉNO
(Coleoptera, Trechinae) from Kanmuri-jima Island,
Kyoto Prefecture, Central Japan

Hisashi ASHIDA¹⁾, Kenji KITAYAMA²⁾ and Kunio ARAYA³⁾

¹⁾ 8–3–406, Uzumasa Kitaro-cho, Ukyo-ku, Kyoto, 616–8182 Japan

²⁾ 4–13–8–210, Saigodori, Moriguchi-shi, Osaka, 570–0034 Japan

³⁾ Graduate School of Human and Environmental Studies, Kyoto University,
Yoshida, Sakyo-ku, Kyoto, 606–8501 Japan

Thalassoduvallius masidai S. UÉNO (1956, p. 65, figs. 1–2) is an oculate trechine beetle though wingless and depigmented. This species is considered to be halophilous, because it primarily inhabits the intertidal areas on the rocky seashore.

In the revision of the genus *Thalassoduvallius* by UÉNO (1978), known populations by then were classified into three subspecies of a single species, *T. masidai*. They were *T. masidai masidai* from Hamada, Shimane Prefecture, western Japan, *T. masidai kurosai* from Uwajima, Ehime Prefecture of Shikoku, western Japan, and *T. masidai pacificus* from the Izu Peninsula and Oh-shima Island of the Izu Islands, both Central Japan. Later, the nominotypical subspecies of *T. masidai* was also discovered from two islands off Kyushu, western Japan: Oki-no-shima Island off Fukuoka and Oshima Island of the Danjo Islands (UÉNO, 1994).

In the autumn of 1999, two of the authors (KITAYAMA and ARAYA), who were making a faunal survey of endangered animals on Kanmuri-jima Island supported by Kyoto Prefecture, obtained several specimens of *Thalassoduvallius* at the eastern coast of the island. After a careful examination, these specimens were identified with *T. masidai masidai*. This is a new record of the species from Kyoto Prefecture, Central Japan.

On the other hand, so far as we are aware, there has been no additional record of *T. masidai pacificus* since original description. Recently, one of the authors (KITAYAMA) collected many topotypical specimens from the cape of Manazuru, and we also record herewith the recent additional examples of *T. m. pacificus*.

Thalassoduvallius masidai masidai S. UÉNO, 1956

Specimens examined. 2♂♂, 2♀♀, Kanmuri-jima Island on Wakasa Bay, Kyoto Prefecture, Central Japan, 11–IX–1999, K. KITAYAMA & K. ARAYA leg.

Notes. The present new locality is about 300 km east by north of Hamada, the type locality of the nominotypical subspecies, and the easternmost record of this species on the coastal region of the Japan Sea. The four specimens were obtained from beneath a large stone embedded in the clayey talus of coastal cliff. The shape of the male genital organ is perfectly identical with that of *T. masidai masidai* of the type locality.

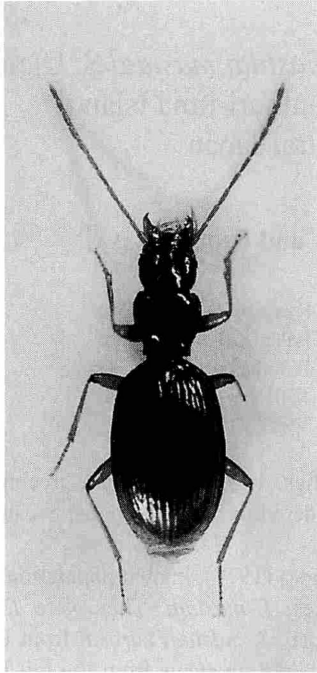


Fig. 1. *Thalassoduvallius masidai masidai*
S. UÉNO, ♀, from Kanmuri-jima Island.

***Thalassoduvallius masidai pacificus* S. UÉNO, 1978**

Additional record. 11♂♂, 10♀♀, the cape of Manazuru, Manazuru-cho, Kanagawa Prefecture, Central Japan, 13~14-XII-1997, K. KITAYAMA leg.

References

- UÉNO, S.-I., 1956. New halophilous trechids of Japan (Coleoptera, Harpalidae). *Mem. Coll. Sci. Univ. Kyoto*, (B), **23**: 61-68.
- 1978. The *Thalassoduvallius* (Coleoptera, Trechinae) of the Izu area, Central Japan. *Mem. natn. Sci. Mus., Tokyo*, (11): 123-130.
- 1985. Carabidae (Nebriinae, Elaphrinae, Loricarinae, Scaritinae, Broscinae, Trechinae). In UÉNO, S.-I., Y. KUROSAWA & M. SATÔ (eds.), *The Coleoptera of Japan in Color*, **2**: 54-88 [incl. pls. 11-16]. Hoikusha, Osaka. (In Japanese, with English book title.)
- 1994. Occurrence of *Thalassoduvallius* (Coleoptera, Trechinae) on two isolated islands off Kyushu, West Japan. *Elytra, Tokyo*, **22**: 45-48.