

- Trud. zool. Muz. MGU*, **27**: 3–87. (In Russian.)
- NIKITSKY, N. B., 1992. Sem. Melandryidae. In LER, P. A. (ed.), *Opredelitel' Nasekomykh Dal'nego Vostoka SSSR v Shesti Tomakh*, **3**(2): 435–474. Nauka, Sankt-Peterburg. (In Russian.)
- 1998. Generic classification of the beetle family Tetratomidae (Coleoptera, Tenebrionoidea) of the world, with description of new taxa. *Pensoft Series Faunistica*, (9): 80 pp. Pensoft, Sofia.
- , V. B. SEMENOV & M. M. DOLGIN, 1998. The beetles of the Priksko — Terrasny Biosphere Reserve — Xylobinotes, Mycetobinotes, and Scarabaeidae (with the review of the Moscow region fauna of these groups). Supplement 1 (with remarks on nomenclature and systematics of some Melandryidae of the world fauna). *Sb. Trud. zool. Muz. MGU*, **36**, suppl. 1. 55 pp., 4 pls. (In Russian.)
- NOMURA, S., 1962. Some new and remarkable species of the Coleoptera from Japan and its adjacent regions. *Tôhô Gakuhô*, (12): 35–51, pls. 1–2.
- 1963. Fam. Melandryidae. In NAKANE, T., et al. (eds.), *Icon. Ins. Japon. Col. nat. ed.*, **2**: 241–246, pls. 121–123. Hokuryukan, Tokyo. (In Japanese with English book title.)
- PIC, M., 1922. Nouveautés diverses. *Mel. exot.-ent.*, *Moulins*, (36): 1–32.
- SASAJI, H., 1985. Fam. Melandryidae. In KUROSAWA, Y., et al. (eds.), *The Coleoptera of Japan in Color*, **3**: 358–374 [incl. pls. 61–64]. Hoikusha, Osaka. (In Japanese with English book title.)

Elytra, Tokyo, **28** (1): 191–192, May 15, 2000

A Biological Note on *Coeliodes galloisi* (Coleoptera, Curculionidae, Ceutorhynchinae)

Hiraku YOSHITAKE

Laboratory of Entomology, Tokyo University of Agriculture, Sakuragaoka 1–1–1,
Setagaya-ku, Tokyo, 156–8502 Japan

The ceutorhynchine weevil *Coeliodes galloisi* was described by HUSTACHE (1916) from Honshu, Japan. YOSHITAKE (1999) additionally recorded the species from the mountainous areas of eastern Japan. However, there is hardly any information about its biology including feeding habits until now. Recently, I had an opportunity to take the adults of the species on young branches of *Carpinus japonica* BL. [Kuma-shide in Japanese] (Betulaceae) at Hakone, Kantou District, Japan. They fed on young leaves of the plant. The collecting data are as follows:

6♂♂, 2♀♀, Mt. Daigatake, Hakone, Kanagawa Pref., 17–V–1999, H. YOSHITAKE & H. MIZUSHIMA leg.

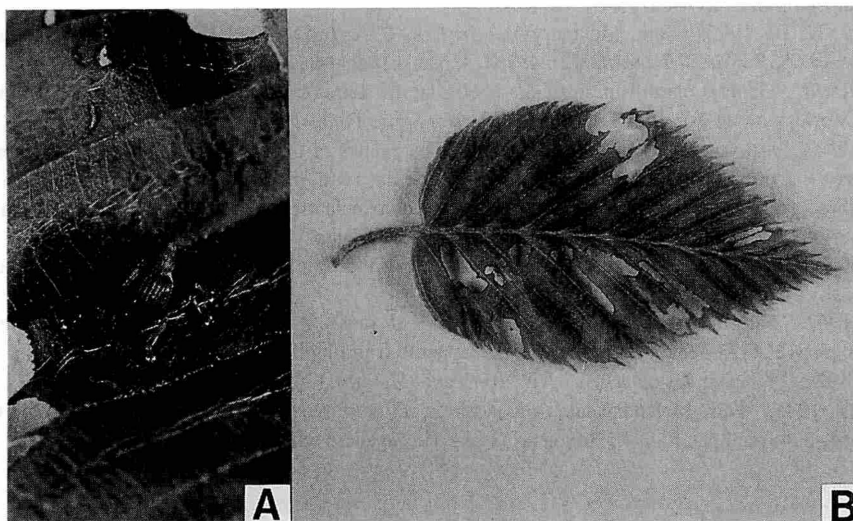


Fig. 1. A, *Coeliodes galloisi* HUSTACHE on a leaf of *Carpinus japonica* BL.; B, feeding trace of *Coeliodes galloisi*.

I wish to express my hearty thanks to Mr. Hiroki MIZUSHIMA, who gave me invaluable information of the species and led the way to its habitat.

References

- HUSTACHE, A., 1916. Synopsis des Ceuthorrhynchini du Japon. *Anns. Soc. ent. Fr.*, **85**: 107–144.
YOSHITAKE, H., 1999. Additional Records of *Coeliodes galloisi* (Coleoptera, Curculionidae). *Elytra, Tokyo*, **27**: 95–96.