

sequences. *J. mol. Evol.*, **42**: 124–129.

SU, Z.-H., O. TOMINAGA, M. OKAMOTO & S. OSAWA, 1998. Origin and diversification of hindwingless *Damaster* ground beetles within the Japanese Islands as deduced from mitochondrial ND5 gene sequence (Coleoptera, Carabidae). *Mol. Biol. Evol.*, **15**: 1026–1039.

Elytra, Tokyo, **28** (2): 239–240, November 15, 2000

A New *Cychrus* (Coleoptera, Carabidae) from Zayü in Southeast Tibet

Yûki IMURA

Department of Gynecology, Tôkyû General Hospital, Kita-senzoku,
1-45-6, Ôta-ku, Tokyo, 145-0062 Japan

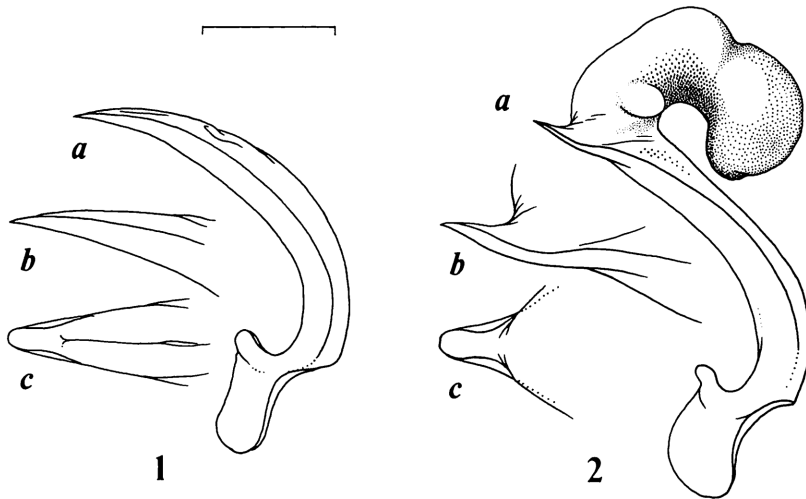
Our knowledge is still very poor on the cychrine fauna of Tibet. Two species of the genus *Cychropsis* have been described from the southeastern part of that region (cf. DEUVE, 1992; IMURA, 1999), but nothing has been reported about the genus *Cychrus*.* Through the courtesy of Mr. and Mrs. Roman BUSINSKÝ (Prague), I was given an opportunity to examine a short series of cychrine specimens collected from Zayü near the southeastern periphery of Tibet (Xizang). Though resembling *Cychrus kralianus*, the Zayü race is peculiar in bearing characteristically shaped aedeagal apex. It is therefore introduced to science as follows.

Cychrus businskyianus IMURA, sp. nov.

Length: 13.2–14.3 mm (including mandibles). Entirely black and not so strongly polished. Closely similar to *Cy. kralianus* DEUVE (1996, p. 87, figs. 8 & 16) described from the Hengduan Shan Mountains in northwestern Yunnan, but differs from it in the following respects: 1) size a little smaller; 2) frontal margin of labrum more strongly arcuate; 3) vertex more remarkably rugoso-punctate; 4) postero-lateral margins of pronotum less strongly reflexed above; 5) primary callosities of elytra wider. Male genitalia as shown in Fig. 2, with the apical portion of aedeagus much more elongate, less strongly arcuate, obviously sinuate on the ventral margin in lateral view and more obtuse at apex in dorsal view; endophallus rather simple, only bearing a pair of small lateral lobes at the basal portion.

Type series. Holotype: ♂, about 20 km distant to the northeast from Zayü [察隅], 3,800–4,000 m in altitude, on the eastern side of the Riv. Zayü Qu, in Zayü Xian of Nyingchi

* Another new species of this genus is described from Southeast Tibet on page 222 of this volume.



Figs. 1–2. Male genitalia of *Cychrus* spp. — 1, *Cychrus kralianus* (holotype) from “YUNNAN, 28°06'N 98°52'E, 3,700 m, Hengduan mts.-part MEILP”; 2, *C. businskyianus* nov. (holotype) from Zayü, SE. Tibet; a, right lateral view; b, apical part of aedeagus in the same view; c, ditto in dorsal view. Scale: 1 mm for a, 0.5 mm for b & c.

Diqu [林芝地区], Southeast Tibet (Xizang), 1–VII–1999, in coll. Department of Zoology, National Science Museum (Nat. Hist.), Tokyo. Paratypes (including allotype): 3 ♂♂, 2 ♀♀ & 4 exs., same data as for the holotype, in colls. Y. IMURA, K. MIZUSAWA and R. BUSINSKÝ.

References

- DEUVE, Th., 1992. Descriptions de nouveaux *Carabus*, *Cychropsis* et *Cychrus* de Chine (Coleoptera, Carabidae). *Lambillionea*, (92): 267–278.
- 1996. Contribution à la connaissance des genres *Carabus* L. et *Cychrus* F. en Chine (Coleoptera, Carabidae). *Coléoptères, Guyancourt cedex*, **2**: 79–89.
- IMURA, Y., 1999. A new *Cychropsis* (Coleoptera, Carabidae) from Mt. Namcha Barwa in Southeast Tibet. *Elytra, Tokyo*, **27**: 633–634.