

## References

- TANAKA, S., 1993. The trechine beetles of the Kii Peninsula, Central Japan, with special reference to the distribution of the genus *Kusumia*. *Kuroshio, Gobô*, (12): 12–15. (In Japanese.)
- UENO, S.-I., 1952. New cave-dwelling trechids of Japan (Coleoptera, Harpalidae). *Mushi, Fukuoka*, **24**: 13–16, pl. 2.
- 1955. Studies on the Japanese Trechinae (V) (Coleoptera, Harpalidae). *Mem. Coll. Sci. Univ. Kyoto*, (B), **22**: 35–50.
- 1960. A synopsis of the genus *Kusumia* (Coleoptera, Harpalidae). *Ibid*, (B), **27**: 121–132.
- 1963. A redescription of *Kusumia yoshikawai* S. UENO (Coleoptera, Harpalidae). *Bull. natn. Sci. Mus., Tokyo*, **6** [for 1962]: 112–114.
- 1980. New *Stygiotrechus* (Coleoptera, Trechinae) from non-calcareous areas. *J. speleol. Soc. Japan*, **5**: 1–12.
- 1999. The anophthalmic trechine beetles of the genus *Kusumia* (Coleoptera, Trechinae). *Elytra, Tokyo*, **27**: 283–326.

---

*Elytra, Tokyo*, **28** (2): 245–246, November 15, 2000

## A Record of *Wittmercantharis curtata* (Coleoptera, Cantharidae) from Hokkaido, Japan

Yûichi OKUSHIMA<sup>1)</sup> and Masataka SATÔ<sup>2)</sup>

<sup>1)</sup>Kurashiki Museum of Natural History, Chûô 2–6–1, Kurashiki-shi,  
Okayama Pref., 710–0046 Japan

<sup>2)</sup>Laboratory of Nature Conservation, Graduate School of Nagoya Women's University,  
Mizuho-ku, Nagoya, 467–8610 Japan

*Wittmercantharis curtata* (KIESENWETTER, 1874) has been collected only in Honshu for a long time since it was described from Osaka, Honshu. Recently, it was recorded for the first time from Shikoku other than Honshu (OKUSHIMA, 1997).

We can record now some specimens of this species from Hokkaido. Their collecting data are as given below. We thank Dr. Shun-Ichi UENO (Tokyo) and Mr. Tatsumi MIYATA (Sapporo) for their kind support in preparing the present report.

### *Wittmercantharis curtata* (KIESENWETTER)

*Cantharis curtata* KIESENWETTER, 1874, Berl. ent. Z., **18**: 273.

*Wittmercantharis curtata*: M. SATÔ, 1986, Trans. Shikoku ent. Soc., **17**: 259. — OKUSHIMA, 1997, *Elytra*,

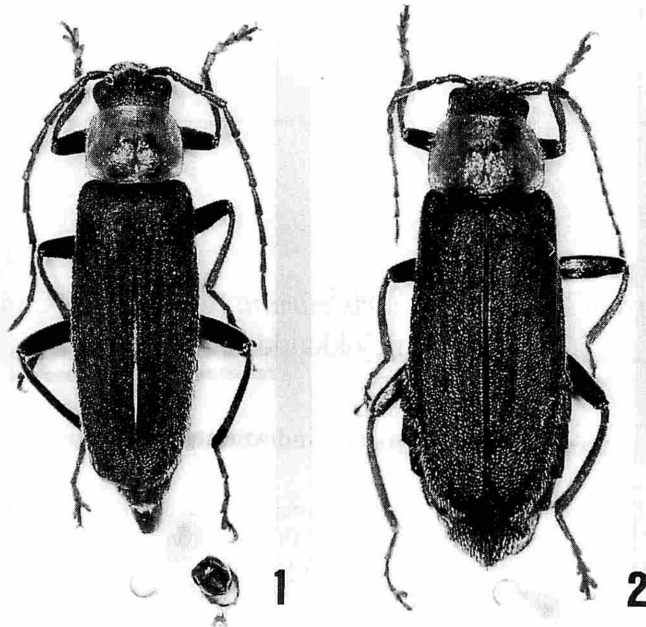
Tokyo, **25**: 332.

*Specimens examined.* Oshima Pen., Hokkaido, Japan: 1 ♀, Toyono, alt. 5–100 m, Oshamanbe-chô, 11–VI–1999, no collector's name; 1 ♂, 1 ♀, Ôshin, alt. 5–100 m, Yakumo-chô, 4–VI–1999, no collector's name; 1 ♀, Ukishima-kôen, Aichi, Kitahiyama-chô, 8–VI–1991, T. MIYATA leg.; 2 ♀♀, Ukishima-kôen, Aichi, Kitahiyama-chô, 12–VI–1993, T. MIYATA leg.

*Depository of the specimens examined.* The specimens recorded here are preserved in the collection of the Kurashiki Museum of Natural History.

*Distribution.* Japan (Hokkaido – new record, Honshu, Shikoku).

*Notes.* Most localities recorded above are confined to narrow areas of the Oshima Peninsula, southwestern Hokkaido. Occurrence of this species seems to be limited in the periphery of grasslands with marshes.



Figs. 1–2. *Wittmercantharis curtata* (KIESENWETTER), from Yakumo-chô, Hokkaido; 1, male; 2, female.

#### References

- KIESENWETTER, H., 1874. Die Malacodermen Japans nach dem Ergebnisse der Sammlungen des Herrn G. LEWIS während der Jahre 1869–1871. *Berl. ent. Z.*, **18**: 241–288.
- OKUSHIMA, Y., 1997. A record of *Wittmercantharis curtata* (Coleoptera, Cantharidae) from Shikoku, Japan. *Elytra, Tokyo*, **25**: 331–332.
- SATÔ, M., 1986. New Cantharoidea from Japan, II (Coleoptera). *Trans. Shikoku ent. Soc.*, **17**: 255–261.