

(*Strongylium*)の10新種. — アジア産ナガキマワリ族(*Strongyliini*)の研究の第10回として, 東南アジア産のナガキマワリ属(*Strongylium*)の新種を10種記載した. それらは, *Strongylium bisbicostatum* sp. nov., *S. flavocostatum* sp. nov., *S. clytoides* sp. nov. (以上3種は *bisbicostatum* 種群), *S. palliditerminale* sp. nov. (*S. subimpressum* FAIRMAIRE に近い種だが種群未定), *S. baudonianum* sp. nov. (*spinitibiale* 種群), *S. niasiinsularum* sp. nov., *S. masatakai* sp. nov. (以上2種は *perforatum* 種群), *S. lampros* sp. nov. (前種にやや似るが種群は異なる. 種群未定), *S. minicupreum* sp. nov. (*gravidum* 種群), *S. pinfaense* sp. nov. (*S. atricolor* PIC に近い種だが *carbonarium* 種群) である.

Reference (Additional)

MASUMOTO, K., 1999. Study of Asian Strongyliini (Coleoptera, Tenebrionidae). VIII. Ten new species of the genus *Strongylium* from East Asia. *Elytra, Tokyo*, **27**: 335–352.

Elytra, Tokyo, **28** (2): 407–408, November 15, 2000

A New *Ponerotrogus* (Coleoptera, Scarabaeidae, Alloscelini) from Sri Lanka

Yuka UTSUNOMIYA¹⁾ and Kimio MASUMOTO²⁾

¹⁾ Graduate School of Home Economics, Otsuma Women's University, Tokyo, 102–8357 Japan

²⁾ Institute of Human Living Sciences, Otsuma Women's University, Tokyo, 102–8357 Japan

On the occasion of visiting Prague in March 1998, the authors received a scarabaeid specimen from Dr. David KRÁL of Charles University for taxonomic study. After a careful examination, they have concluded that this is a new species of the genus *Ponerotrogus*, which will be described below.

Ponerotrogus králi sp. nov.

(Fig. 1)

Body hemispherical; brownish black, with dorsal surface except for apical margin of head almost black, apical margin of head, mouth parts, antennae and legs lighter in colour; dorsal surface moderately shining, ventral surface feebly alutaceous.

Head feebly convex in medio-posterior part, scattered with small punctures near apex; apical margin noticeably emarginate at the middle, sinuous near the borders of genae and clypeus, each side of the emargination strongly projected apicad; genae before eyes subangulate laterad. Pronotum rather wide; apex gently produced anteriad; base widely rounded though very slightly

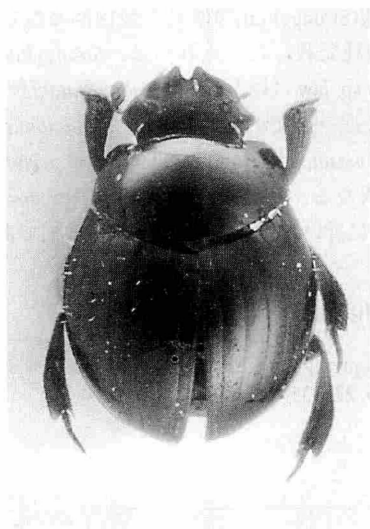


Fig. 1. Habitus of *Ponerotrogus krali* sp. nov., holotype, ♀. (Photo by M. KIKUCHI.)

angulate at the middle; front angles rounded and hind angles obtusely angulate in dorsal view; disc very sparsely scattered with microscopic punctures, with a weak depression in medio-basal part, whose anterior limit is arcuate on each side.

Elytra finely punctato-striate, the punctures in striae small and rather closely set; intervals feebly convex, weakly microsculptured, very sparsely scattered with small setigerous punctures in lateral and posterior parts. Pygidium subrhombical, feebly micro-shagreened, sparsely scattered with small punctures.

Fore and middle femora visible from above (one of the characteristics of the genus); fore tibia widened apicad, roundly produced at the extremity, bluntly projected at outer angle, shallowly emarginate behind the projection, with outer margin feebly produced; middle tibia widened apicad, widest at apical 1/3, triangularly incised at the extremity, with outer angle roundly produced; hind tibia widened apicad, widest in apical 2/5, with the extremity triangularly incised.

Body length: 3.3 mm.

Holotype: ♀, Kanoy (at light), Sri Lanka, IV-1975 (National Museum (Nat. Hist.), Prague).

Notes. This new species can be differentiated from *Ponerotrogus ceylonicus* BALTHASAR, 1972, originally described from "Kantalai, Ceylon", by the genae subangulate, the pronotum with a depression in the medio-basal part, the elytra with the 3rd and 4th striae not shortened in the anterior part, and the fore tibia with only a terminal tooth.

References

- BALTHASAR, V., 1963. Monographie der Scarabaeidae und Aphodiidae der palaearktischen und orientalischen Region, Coleoptera: Lamellicornia, 1: 1-391, 24 pls. Tschechoslowakische Akademie der Wissenschaften, Prag.
- 1972. Neue Arten der Scarabaeidae und Aphodiidae von Ceylon. *Mitt. schweiz. ent. Ges.*, **45**: 117-122.