

The Cerambycidae Collected on Pohnpei (Ponape) Island, Micronesia,
with Reference to Individual Variation
of *Paremeopedus minimus*

Ryûtarô IWATA

Forest Zoology Laboratory, Department of Forest Science and Resources,
College of Bioresource Sciences, Nihon University,
Fujisawa, 252–8510 Japan

Although the cerambycid fauna of Japan, including the Bonin Islands, has been almost completely clarified, that of Micronesia, consisting of numerous islands, still needs survey since the publication of GRESSITT's (1956) monograph; very little works have been published thereafter (BREUNING, 1983; IWATA, 1993; SAITO, 1994). This is to report the result of study on the cerambycid collected on Pohnpei (Ponape) Island, the Federated States of Micronesia, on Dec. 19–21, 1991. All the specimens were collected by me and my family, and deposited in my collection.

Family Cerambycidae

Sybra convexa GRESSITT

1 ♂, 1 ♀, from Kolonia to Nett, 20–XII–1991.

Sybra ponapensis BLAIR

1 ♂, 1 ♀, Nett, 19–XII–1991; 1 ♂, 2 ♀♀, Nett, 20–XII–1991; 1 ♀, from Nett to Nanpil Waterfall, 20–XII–1991; 1 ♂, 3 ♀♀, from Kolonia to Nett, 20–XII–1991.

Sciades (Acanthosciades) latispina (GRESSITT)

1 ♂, 1 ♀, Nett, 19–XII–1991; 1 ♂, from Kolonia to Sokehs, 19–XII–1991; 1 ♂, 2 ♀♀, Sokehs, 19–XII–1991; 1 ♂, 3 ♀♀, Tomorolong, 19–XII–1991; 1 ♂, 2 ♀♀, from Nett to Nanpil Waterfall, 20–XII–1991; 9 ♂♂, 2 ♀♀, from Kolonia to Nett, 20–XII–1991; 6 ♂♂, 1 ♀, Kolonia, 21–XII–1991.

The male of this species has a very outstanding double-cusped spine on each elytron (Fig. 1), which seems to be allometric. Also, larger individuals are always males, not females. These strongly suggest a peculiar system of mating behavior in this species, the spines presumably being used to grasp female body.

Sciades (Micronesiella) townesi (GRESSITT)

1 ex., Sokehs, 19–XII–1991; 2 exs., Nett, 19–XII–1991; 5 exs., Tomorolong, 19–XII–1991; 3 exs., from Nett to Nanpil Waterfall, 20–XII–1991; 9 exs., from Kolonia to Nett, 20–XII–1991; 6 exs., Kolonia, 21–XII–1991.

Paremeopedus minimus (BLAIR)

2 exs., Nett, 19–XII–1991; 4 exs., Sokehs, 19–XII–1991; 2 exs., Tomorolong, 19–XII–1991; 9 exs., from Nett to Nanpil Waterfall, 20–XII–1991; 3 exs., Nett, 20–XII–1991; 44

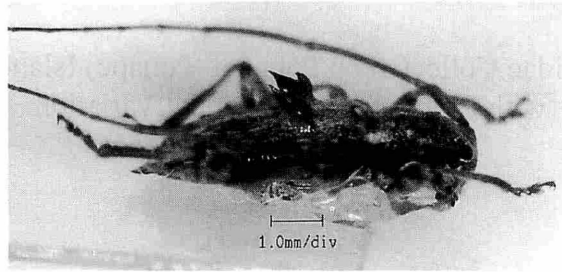
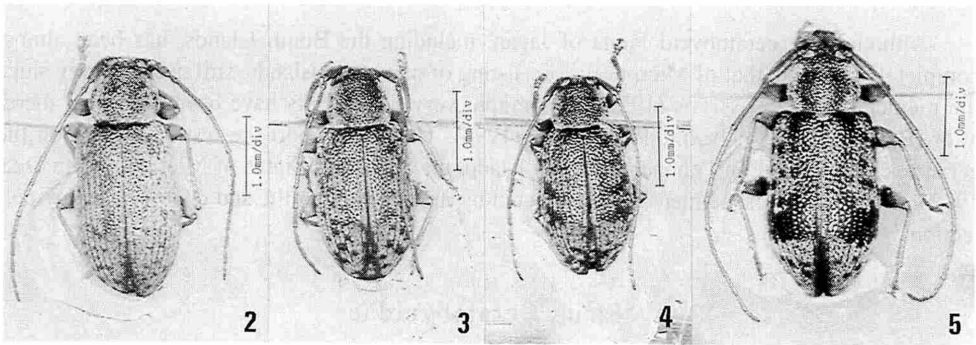


Fig. 1. Male of *Sciades (Acanthosciades) latispina* (GRESSITT), showing spines on the elytra (scale: 1 mm).



Figs. 2-5. Individual variation of *Paremeopedus minimus* (BLAIR) (scale: 1 mm).

exs., from Kolonia to Nett, 20-XII-1991; 1 ex., Kolonia, 21-XII-1991.

Since individual variation of the elytral patterns of this species is considerable, and since this has not been shown in detail, some examples are presented in Figs. 2-5.

References

- BREUNING, S., 1983. Nouvelles formes de Lamiinae de l'Ouest du Pacifique, récoltés par le Dr. Peter SCHURMANN. *Bull. Soc. ent. Mulhouse*, **1983**: 31.
- GRESSITT, J. L., 1956. Insects of Micronesia. Coleoptera: Cerambycidae. *Ins. Micronesia*, B. P. Bishop Mus., Honolulu, **17**: 61-183.
- IWATA, R., 1993. Records of cerambycids from the Mariana Islands, Micronesia, with description of a new species of the genus *Sybra* (Coleoptera: Cerambycidae: Lamiinae). *Pan-Pacif. Entomol.*, **69**: 149-154.
- SAITO, A., 1994. Records of some Cerambycidae (Insecta: Coleoptera) from the Northern Mariana Islands, Micronesia. *Nat. Hist. Res., Spec. Iss., Chiba*, (1): 227-228.