

## Discovery of *Mecysmoderes nigrinus* (Coleoptera, Curculionidae, Ceutorhynchinae) from Japan<sup>1)</sup>

Hiraku YOSHITAKE

Entomological Laboratory, Division of Bioresource and Bioenvironmental Science,  
Graduate School, Kyushu University, 812–8581 Japan

The ceutorhynchine weevil *Mecysmoderes nigrinus* was originally described by HONG *et al.* (1999) from Central and South Korea on the basis of the specimens taken on *Rhododendron mucronulatum* TURCZ. Any records have not been made after the original description.

Through my recent study of the Japanese Ceutorhynchinae, I found a number of specimens of this species collected from Japan in several private collections. After a close examination, I now find that they are identical with the Korean specimens. Their collecting data will be shown in the following lines.

I wish to express my thanks to Dr. Hiroaki KOJIMA, Mr. Kenichi EMOTO and Mr. Masami HORIKAWA for their kind offer of invaluable specimens.

### *Mecysmoderes nigrinus* HONG *et* WOO, 1999

(Fig. 1)

*Mecysmoderes nigrinus* HONG *et* WOO, 1999, *Ins. Koreana*, **16**: 189–191.

*Specimens examined.* [Honshu] 1 ♀, Ura-Takao, Tokyo, 3–V–1970, K. EMOTO leg.; 1 ♂, 2 ♀♀, Hatouchi-rindô, Iida-shi, Nagano Pref., 29~30–IV–1998, H. YOSHITAKE leg.; [Kyushu] 3 ♀♀, Mt. Unzen, Shimabara, Nagasaki Pref., 24–VI–1981, S. IMASAKA leg.; 14 ♂♂, 13 ♀♀, Mt. Hiko-san, Fukuoka Pref., 25–V–1993, H. KOJIMA leg.; 1 ex., Mt. Kujû, Ôita Pref., 13~15–V–1967, H. TAKIZAWA leg.; 3 ♂♂, 1 ♀, Chôjabaru–Bôgatsuru, Ôita Pref., 22–V–1994, H. KOJIMA leg.; 5 ♂♂, 5 ♀♀, Mt. Kujû-san, Kumamoto Pref., 26–VI–1992, H. KOJIMA leg.; 3 ♀♀, Mt. Shiraiwa, Gokase-chô, Miyazaki Pref., 22–V–1998, H. KOJIMA leg.

*Distribution.* Japan (new record): Honshu, Kyushu; C. and S. Korea.

*Biological note.* In my observation in Nagano, the adults were found on the young branches of *Rhododendron obtusum* (LINDL.) PLANCH. var. *kaempferi* (PLANCH.) WILS. [*yama-tsutsuji* in Japanese] with the flower buds (Fig. 2), and they fed on the leaves and flower buds.

---

1) Contribution from the Entomological Laboratory, Faculty of Agriculture, Kyushu University, Fukuoka (Ser. 5, No. 49).

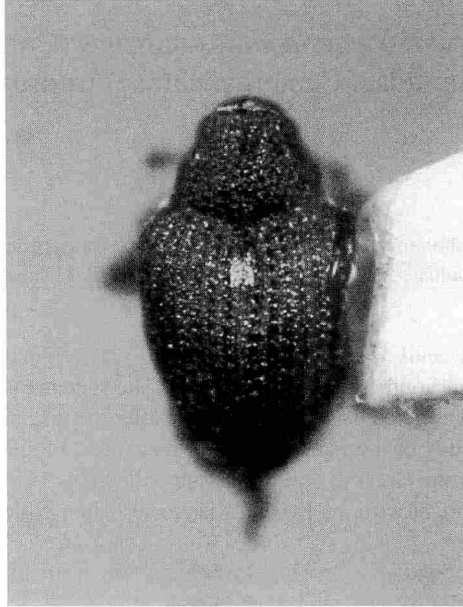


Fig. 1. *Mecysmoderes nigrinus* HONG et WOO, male in dorsal view.



Fig. 2. — A, Habitat of *Mecysmoderes nigrinus* on Hatouchi-rindô, Iida-shi, Nagano; B, *Rhododendron obtusum* (LINDL.) PLANCH., one of the food plants of the adult of *Mecysmoderes nigrinus*.

#### Reference

- HONG, K-J., A. B. EGOROV & K-S. WOO, 1999. Taxonomic review of Korean Ceutorhynchinae (Coleoptera, Curculionidae). II. Subtribe Coelioidina, Ceutorhynchina, Hypurina, Mecysmoderina, and Tribe Orobitini. *Ins. Koreana*, **16**: 163–195.