

Occurrence of *Trichocoeliodes excavatus* (Coleoptera, Curculionidae, Ceutorhynchinae) in South Korea¹⁾

Hiraku YOSHITAKE²⁾, Satoshi KAMITANI³⁾ and Jong-cheol PAIK⁴⁾

²⁾Entomological Laboratory, Division of Bioresource and Bioenvironmental Science, Graduate School, Kyushu University, 812–8581 Japan

³⁾Entomological Laboratory, Faculty of Agriculture, Kyushu University, 812–8581 Japan

⁴⁾Department of Agricultural Biology, College of Agriculture, Sunchon National University, 315, Maegokdong, Sunchon, 540–742 Korea

Trichocoeliodes excavatus was originally described by HUSTACHE (1916) on the basis of specimens collected from mont Kinkazan près Gifu and Nagasaki, Japan as a member of the genus *Micrelus*. After that, COLONNELLI (1986) transferred it to the genus *Trichocoeliodes*. This species is known to occur in Honshu, Shikoku and Kyushu, Japan, but no record from the neighboring country is available up to the present.

In late May, 2000, we made a short collecting trip to the vicinity of Mt. Jiri-san, Sang-Nan-Do, South Korea, and were able to collect many individuals of the species by net-sweeping from young branches of a chestnut tree, *Castanea crenata* SIEB. et ZUCC. [*kuri* in Japanese].

After a careful examination, it has become clear that they are identical with the Japanese specimens. It is therefore newly recorded from Korea with a brief biological note.

Trichocoeliodes excavatus (HUSTACHE, 1916)

(Fig. 1 A, B)

Micrelus excavatus HUSTACHE, 1916, Annals. Soc. ent. Fr., **85**: 128.

Trichocoeliodes excavatus: COLONNELLI, 1986, Fragg. ent., Roma, **18**: 435.

Specimens examined. 9♂♂, 26♀♀, Piagol, Mt. Jiri-san, Sang-Nan-Do, S. Korea, 30–V–2000, S. KAMITANI & H. YOSHITAKE leg.

Distribution. Japan: Honshu, Shikoku, Kyushu; S. Korea (new record).

Biological note. According to MORIMOTO (1984), adults of this species were taken on inflorescence of the chestnut trees in the spring and early summer. In our observation on a chestnut field in South Korea, the adults gathered on inflorescence before the flowering of the cultivated chestnut trees (Fig. 2), and they fed on the flower buds by thrusting their rostrums (Fig. 1 B).

1) Contribution from the Entomological Laboratory, Faculty of Agriculture, Kyushu University, Fukuoka (Ser. 5, No. 50).

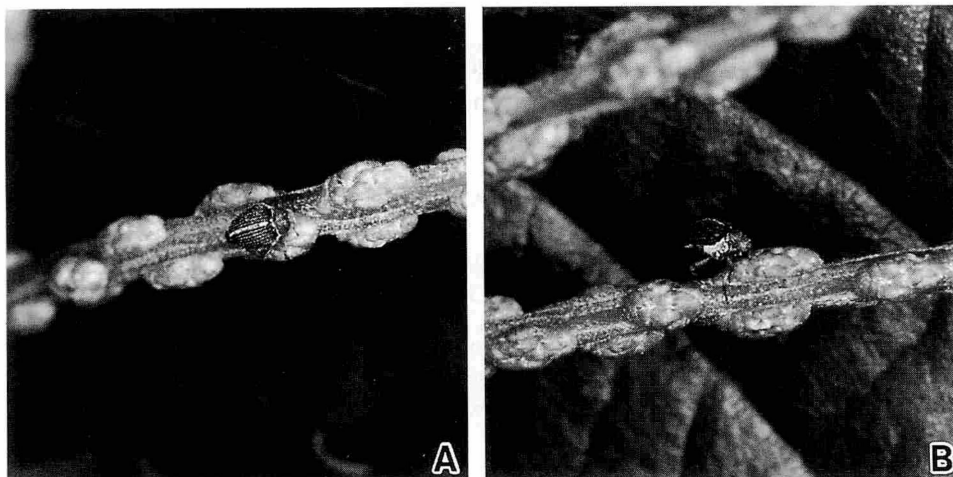


Fig. 1. *Trichocoeliodes excavatus* (HUSTACHE); A, an adult on inflorescence of the chestnut tree; B, ditto, feeding on a flower bud.



Fig. 2. Habitat of *Trichocoeliodes excavatus* (HUSTACHE), a chestnut field at Piagol on Mt. Jiri-san, South Korea.

References

- COLONNELLI, E., 1986. Note sistematiche e sinonimiche su alcuni Ceutorhynchinae (Coleoptera, Curculionidae). *Fragm. ent., Roma*, **18**: 419–439.
- HUSTACHE, A., 1916. Synopsis des Ceuthorrhynchini du Japon. *Annls. Soc. ent. Fr.*, **85**: 107–144.
- MORIMOTO, K., 1984. Curculionidae. In HAYASHI, M., K. MORIMOTO & S. KIMOTO (eds.), *The Coleoptera of Japan in Color*, **4**: 269–345 [incl. pls. 53–68]. Hoikusha, Osaka. (In Japanese, with English book title.)