

Collecting Records of Cerambycid Beetles (Coleoptera, Cerambycidae) from the Kuril Archipelago (3)

Tatsuya NIISATO

Bioindicator Co., Ltd., Yarai-chô 126, Shinjuku-ku, Tokyo, 162-0805 Japan

Abstract The collecting data of eighteen cerambycid species from the Kuril Archipelago are given, all of them having been previously known from the island group. Four species of cerambycids are also recorded from the Russian continent.

Through the courtesy of Dr. Brian K. URBAIN of the University of Washington, I was able to examine rather a large number of specimens of the coleopteran family Cerambycidae mainly collected from the Kuril Archipelago by the surveys of International Kuril Island Project at a period between mid July and end of August 1994–1999. The collections contain eighteen species from the Kurils and four from the Russian continent. Although no such discovery as new record from the island group is included in the result of examination, I am going to record them as distributional data from this area.

This is the third part of the series dealing with the collecting records of cerambycid beetles from the Kurils (for the previous reports, see NIISATO, 1997, pp. 267–270, 2000, p. 70). The work was supported in part by the Biological Sciences Directorate (Biotic Surveys and Inventories Program) and the International Program Division of the U.S. National Science Foundation (Grant numbers DEB-9400821 and DEB-9505031), Theodore W. PIETSCH, principal investigator; and by the Japan Society for the Promotion of Science (Grant number BSAR-401), Kunio AMAOKA, principal investigator. All of the material provided with species name labels by my determination will be preserved in the collection of the University of Washington.

Abbreviations of Collecting Data

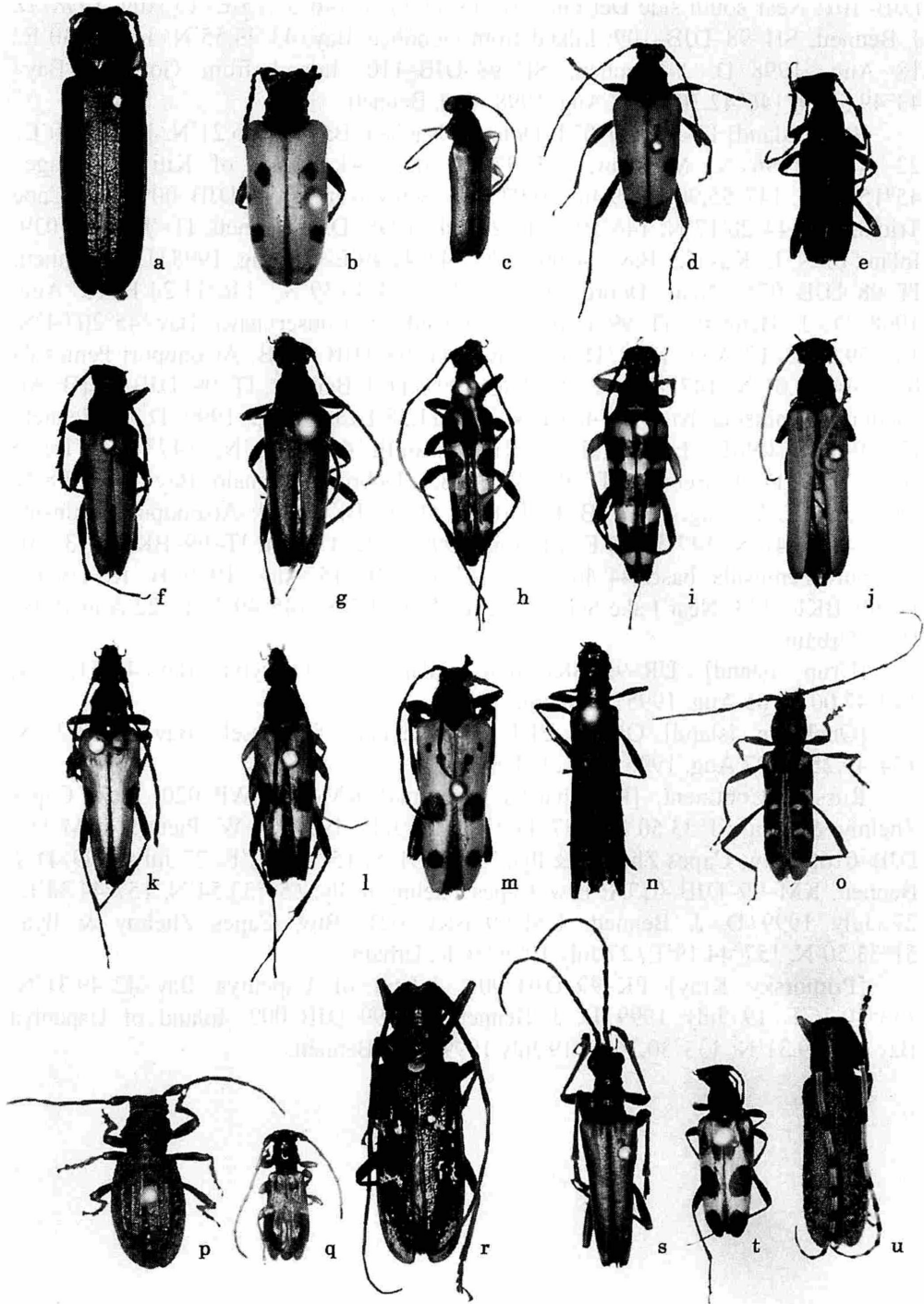
Kuril Archipelago. [Kunasir Island] KU-94-NM-021: Environs of Lake Krugloye/44°22.24'N, 146°25.12'E/23 Aug. 1994/R. I. Gara. KU-94-NM-001: N & E. shores Lk. Aliger/44°02.48'N, 145°44.24'E/31 July 1995/R. I. Gara. KU-94-TWP-010: Environ of Ilyushina River/44°09.18'N, 145°56.30'E/01 Aug. 1994/B. K. Urbain. KU-95-PO-002: Goby Hot Springs/44°00.47'N, 145°40.98'E/02 Aug. 1995/N. Minakawa. KU-96-BKU-092: Trail to Goby Hot Springs/44°00'N, 145°41'E/25 Aug 1996/B. K. Urbain. KU-96-BKU-091: Trail to Goby Hot Springs/

44°00.46'N, 145°41.92'E/25 Aug. 1996/B. K. Urbain. KU-97-TWP-006: Trail to Goby Hot Springs/44°00.43'N, 145°40.98'E/27 July 1997/T. W. Pietsch. KU-97-BKU-009: Trail to Goby Hot Springs/44°00.34'N, 145°42.06'E/27 July 1997/B. K. Urbain. KU-98-LJW-044: Kisly Hot Springs/44°00.45'N, 145°46.41'E/11 Aug 1998/L. J. Weis. KU-98-TWP-001: Trail to Goby Hot Springs/44°00.41'N, 145°49.25'E/26 July 1998/T. W. Pietsch. KU-98-TWP-044: Environs of Lk. Aliger/44°02.76'N, 145°44.11'E/11 Aug 1998/T. W. Pietsch. KU-98-DJB-001: Env. of Goby Hot Springs/44°00.46'N, 145°40.34'E (44°00.41'N, 145°40.96'E)/26 July 1998/D. J. Bennett. KU-98-DJB-001: Goby Hot Springs/44°00.25'N, 145°40.34'E/25 July 1998/D. J. Bennett. KU-98-DJB-002: Environs Goby Hot Springs/44°00.41'N, 145°40.96'E/26 July 1998/D. J. Bennett. KU-98-DJB-006: Lovtsova Peninsula/44°25.08'N, 146°26.75'E/28 July 1998/D. J. Bennett. KU-98-BKU-001: Env. Goby Hot Springs/44°00'N, 146°41'E/26 July 1998/B. K. Urbain. KU-98-BKU-002: Env. Goby Hot Springs/44°00'N, 146°41'E/26 July 1998/B. K. Urbain. KU-98-BKU-007: Lovtsova Peninsula/44°24.97'N, 146°25.79'E/28 July 1998/B. K. Urbain. KU-98-BKU-018: Lovtsova Peninsula/44°25.10'N, 146°26.57'E/28 July 1998/B. K. Urbain. KU-98-BKU-073: Btw. Lks. Aliger, Lagunnoye/44°03.17'N, 145°45.00'E/11 Aug. 1998/B. K. Urbain. KU-98-BKU-133: Near Lake Serebryanoye/44°03.07'N, 145°49.25'E/22 Aug. 1998/B. K. Urbain. KU-98-BKU-133A: Near Lake Serebryanoye/44°03.07'N, 145°49.25'E/22 Aug. 1998/B. K. Urbain. KU-99-BKU-095: Trail to Goby Hot Springs/44°00.46'N, 145°41.76'E/17 Aug. 1999/B. K. Urbain. KU-99-DJB-102: Goby Hot Springs. Environs/44°00.39'N, 145°41.07'E/17 Aug. 1999/D. J. Bennett. KU-99-DJB-105: Goby Hot Springs. Environs/44°00.39'N, 145°41.07'E/17 Aug. 1999/D. J. Bennett. KU-99-DJB-119: Inland of Alekhina Bay/43°55.12'N, 145°32.29'E/19 Aug. 1999/D. J. Bennett.

[Polanskogo Island] PO-98-DJB-133: Inland from western side/43°38.38'N, 146°18.58'E/21 Aug. 1998/D. J. Bennett.

[Shikotan Island] SH-98-BKU-088: Inland from Dimitrova Bay/43°47.64'N, 146°48.68'E/13 Aug. 1998/B. K. Urbain. SH-98-BKU-110: Inland from Gorobets Bay/43°49.27'N, 146°42.25'E/18 Aug. 1998/B. K. Urbain. SH-98-DJB-096: Near Tserkvansya Bay/43°44.37'N, 146°42.81'E/14 Aug. 1998/D. J. Bennett. SH-98-

Fig. 1. Cerambycid beetles collected from the Kuril Archipelago and their neighboring areas. — a, *Megasemum quadricostulatum* KRAATZ; b, *Brachyta punctata* (FALDERMANN); c, *Allosterna tabacicolor* (DE GEER); d, *Judolia cometes* (BATES); e, *Anastrangalia scotodes scotodes* (BATES); f, *Corymbia succedanea* (LEWIS); g, *Leptura aethiops* PODA; h, *Leptura mimica* BATES; i, *Leptura ochraceofasciata ochraceofasciata* (MOTSCHULSKY); j, *Leptura latipennis* (MATSUSHITA); k, *Pedostrangalia circaocularis* (PIC); l, *Nakanea vicaria vicaria* (BATES); m, *Oedecnema gebleri* (GANGLBAUER); n, *Chloridolum (Leotium) viride* (THOMSON); o, *Paraclytus excultus* (BATES); p, *Plectura (Phlyctidola) metallica metallica* (BATES); q, *Monochamus (Monochamus) urussovii* (BATES); r, *Stenocorus amurensis* (KRAATZ); s, *Nivellia sanguinosa* (GYLLENHAL); t, *Judolia sexmaculata* (LINNÉ); u, *Agapanthia (Agapanthia) villosoviridescens* (DE GEER).



DJB-101: Near south side Del'Fin Bay/43°44.96'N, 146°37.75'E/15 Aug. 1998/D. J. Bennett. SH-98-DJB-109: Inland from Gonobets Bay/43°49.55'N, 146°42.30'E/18 Aug. 1998/D. J. Bennett. SH-98-DJB-110: Inland from Gorobets Bay/43°49.55'N, 146°42.30'E/18 Aug. 1998/D. J. Bennett.

[Itrup Island] IT-96-PO-074: Dobroye Nachalo Bay/44°46.21'N, 147°11.40'E/22 Aug. 1996/N. Minakawa. IT-97-JSS-052: 4 km east of Kitivyi Village/45°15.90'N, 147°55.90'E/29 July 1997/J. S. Schweiker. IT-98-DJB-009: Near Cape Triokhpaly/44°28.17'N, 146°59.58'E/29 July 1998/D. J. Bennett. IT-98-DJB-039: Inland of N. E. Kasatka Bay/44°00.31'N, 147°43.49'E/01 Aug. 1998/D. J. Bennett. IT-98-DJB-075: Near Dobroyenachalo Bay/44°46.39'N, 146°11.24'E/10 Aug. 1998/D. J. Bennett. IT-99-DJB-078: Inland of Konservnaya Bay/45°20.04'N, 147°59.84'E/12 Aug. 1999/D. J. Bennett. IT-99-DJB-090B: Atsonupuri Peninsula base/44°46.01'N, 147°11.58'E/14 Aug. 1999/D. J. Bennett. IT-99-DJB-091B: Atsonupuri Peninsula base/44°46.01'N, 147°11.58'E/14 Aug. 1999/D. J. Bennett. IT-99-DJB-096E: Env. Tikhaya River mouth/44°43.53'N, 147°12.85'E/15 Aug. 1999/D. J. Bennett. IT-96-BKU-085: Dobroye Nachalo Bay/44°45.98'N, 147°10.94'E/22 Aug. 1996./B. K. Urbain. IT-99-BKU-084: Atsonupuri Peninsula base/44°46.41'N, 147°11.20'E/14 Aug. 1999 B. K. Urbain. IT-99-BKU-093: Atsonupuri Peninsula base/44°46.77'N, 147°11.16'E/15 Aug. 1999/B. K. Urbain. IT-99-BKU-133: Near Lake Serebryanoye/44°03.07'N, 145°49.25'E/22 Aug 1998/B. K. Urbain.

[Ururp Island] UR-95-BKU-018: Inland of Otkrytyi Bay/45°51.53'N, 149°47.00'E/05 Aug. 1995/P. Oberg.

[Onekotan Island] ON-96-BKU-027: Inland of Mussel' Bay/49°23.25'N, 154°49.25'E/07 Aug. 1996/B. K. Urbain.

Russian Continent. [Kamchatska Peninsula] KM-99-TWP-020: Btw. Capes Zhelmy & Ilya/51°33.50'N, 157°44.21'E/27 July 1999/T. W. Pietsch. KM-99-DJB-016B: Btw. Capes Zhelmy & Ilya/51°33.31'N, 157°44.12'E/27 July 1999/D. J. Bennett. KM-99-DJB-017A: Btw. Capes Zhelmy & Ilya/51°33.54'N, 157°44.34'E/27 July 1999/D. J. Bennett. KM-99-BKU-021: Btw. Capes Zhelmy & Ilya/51°33.50'N, 157°44.19'E/27 July 1999/B. K. Urbain.

[Primorsky Kray] PK-99-DJB-001: Inland of Uspeniya Bay/42°49.31'N; 133°30.36'E/19 July 1999/D. J. Bennett. PK-99-DJB-002: Inland of Uspeniya Bay/42°49.31'N; 133°30.36'E/19 July 1999/D. J. Bennett.

List of the Species Collected from the Kuril Archipelago

Subfamily Spondyliinae

Megasemum quadricostulatum KRAATZ, 1879

(Fig. a)

Specimen examined. [Kunasir] 1 ♀ (KU-99-BKU-095).

Distribution. E Siberia, Sakhalin, Kurils; China, Korean Pen.; Hokkaido, Honshu, Shikoku, Kyushu.

Subfamily Lepturinae

Brachyta punctata (FALDERMANN, 1833)

(Fig. b)

Specimen examined. [Kunasir] 1 ♀ (KU-98-KU-007).

Distribution. Russian Far East, Sakhalin, Kurils; Hokkaido, Honshu.

Allosterna tabacicolor (DE GEER, 1775)

(Fig. c)

Specimen examined. [Kunasir] 1 ♀ (KU-98-DJB-001a).

Distribution. Kurils; Hokkaido, Honshu, Rishiri Is., Sado Is.

Judolia cometes (BATES, 1884)

(Fig. d)

Specimens examined. [Kunasir] 1 ♀ (KU-94-NM-001); 1 ♀ (KU-96-BKU-091); 7 ♂♂, 1 ♀ (KU-96-BKU-092); 1 ♂♂, 2 ♀♀ (KU-98-BKU-133); 2 ♂♂ (KU-99-DJB-102). [Shikotan] 3 ♂♂, 2 ♀♀ (SH-98-DJB-110); 2 ♂♂, 1 ♀ (SH-98-BKU-110).

Distribution. Sakhalin, Kurils; Hokkaido, Honshu, Shikoku, Kyushu.

Anastrangalia scotodes scotodes (BATES, 1873)

(Fig. e)

Specimens examined. [Kunasir] 1 ♀ (KU-98-TWP-001); 1 ♂ (KU-98-DJB-001c); 1 ♀ (KU-98-BKU-133). [Itrup] 1 ♂ (IT-99-DJB-090B); 1 ♂, 1 ♀ (IT-99-DJB-091B).

Distribution. Russian Far East, Sakhalin, Kurils; NE. China, Korean Pen.; Hokkaido, Rishiri Is., Honshu, Sado Is., Shikoku, Kyushu, Tsushima Isls., Koshikijima Isls., Tanegashima Is., Yakushima Is., and other neighboring islands.

***Corymbia succedanea* (LEWIS, 1879)**

(Fig. f)

Specimens examined. [Kunasir] 1 ♀ (KU-98-LJW-044); 1 ♂, 1 ♀ (KU-98-TWP-044); 2 ♂♂ (KU-98-BKU-073). [Shikotan] 1 ♂ (SH-98-DJB-101); 1 ♂ (SH-98-BKU-088). [Itrup] 2 ♂♂ (IT-98-DJB-039). [Polonskogo] 2 ♂♂ (PO-98-DJB-133).

Distribution. Russian Far East, Sakhalin, Kurils; NE. China, Korean Pen.; Hokkaido, Rishiri Is., Okushiri Is., Honshu, Sado Is., Awa-shima Is., Shikoku, Kyushu, Tsushima Isls., and other neighboring islands. Chichi-jima Is. and Okinawa Is. (introduced).

***Leptura aethiops* PODA, 1761**

(Fig. g)

Specimens examined. [Kunasir] 1 ♂ (KU-95-PO-002); 3 ♂♂, 1 ♀ (KU-97-TWP-006); 1 ♂, 1 ♀ (KU-97-BKU-009); 1 ♂ (KU-98-BKU-001). [Itrup] 1 ♂, 1 ♀ (IT-98-DJB-075); 1 ♂ (IT-99-DJB-091B).

Distribution. Russian Far East, Sakhalin, Kurils; widespread in the Palearctic Region; Hokkaido, Rishiri Is., Honshu.

***Leptura mimica* BATES, 1884**

(Fig. h)

Specimens examined. [Kunasir] 1 ♂, 2 ♀♀ (KU-98-BKU-133). [Shikotan] 1 ♂ (SH-98-DJB-096); 2 ♂♂ (SH-98-DJB-109); 3 ♂♂, 1 ♀ (SH-98-DJB-110); 1 ♀ (SH-98-BKU-088). [Itrup] 1 ♀ (IT-96-BKU-085); 3 ♂♂ (IT-99-DJB-078); 10 ♂♂, 1 ♀ (IT-99-DJB-091B); 1 ♂, 1 ♀ (IT-99-DJB-096E); 3 ♂♂, 3 ♀♀ (IT-99-BKU-084); 1 ♂, 1 ♀ (IT-99-BKU-093).

Distribution. Sakhalin, Kurils; Hokkaido, Rishiri Is., Honshu.

***Leptura ochraceofasciata ochraceofasciata* (MOTSCHULSKY, 1861)**

(Fig. i)

Specimens examined. [Kunasir] 1 ♂, 1 ♀ (KU-99-DJB-102).

Distribution. Sakhalin, Kurils; NE. China, Korean Pen.; Hokkaido, Rishiri Is., Okushiri Is., Honshu, Sado Is., Oki Isls., Miya-jima Is., Izu Isls. (Ôshima Is., Nii-jima Is. and Kôzu-shima Is.).

Leptura latipennis (MATSUSHITA, 1933)

(Fig. j)

Specimen examined. [Kunasir] 1 ♂ (KU-98-DJB-002).*Distribution.* Kurils; Hokkaido, Honshu, Shikoku, Kyushu.***Pedostrangalia circaocularis*** (PIC, 1934)

(Fig. k)

Specimens examined. [Kunasir] 1 ♂, 1 ♀ (KU-98-DJB-006); 2 ♀♀ (KU-98-BKU-018). [Itrup] 1 ♀ (IT-96-PO-074); 1 ♂, 1 ♀ (IT-98-BKU-084).*Distribution.* Sakhalin, Kurils; Hokkaido, Rebun Is.***Nakanea vicaria vicaria*** (BATES, 1884)

(Fig. l)

Specimens examined. [Kunasir] 1 ♀ (KU-94-NM-021); 2 ♀♀ (KU-98-BKU-133A); 9 ♂♂, 7 ♀♀ (KU-99-DJB-102); 1 ♂, 1 ♀ (KU-99-DJB-105); 1 ♂, 1 ♀ (KU-99-DJB-119). [Shikotan] 2 ♀♀ (SH-98-DJB-110).*Distribution.* Sakhalin, Kurils; Hokkaido, Rishiri Is., Okushiri Is., Honshu, Izu Isls. (Mikura-jima Is.), Shikoku, Kyushu, Yakushima Is.***Oedecnema gebleri*** (GANGLBAUER, 1889)

(Fig. m)

Specimen examined. [Kunasir] 1 ♂ (KU-97-DJB-001).*Distribution.* Russian Far East, Sakhalin, Kurils; widespread in the Palearctic Region; Hokkaido, Rishiri Is., Honshu.

Subfamily Cerambycinae

Chloridolum (Leotium) viride (THOMSON, 1864)

(Fig. n)

Specimens examined. [Kunasir] 1 ♂ (KU-97-BKU-009); 1 ♀ (KU-98-BKU-133); 1 ♀ (KU-99-DJB-102).*Distribution.* Sakhalin, Kurils; NE. China, Korean Pen.; Hokkaido, Rishiri Is., Rebun Is., Honshu, Oki Isls., Shikoku, Kyushu, Tsushima Isls., Yakushima Is., and other neighboring islands.

Paraclytus excultus (BATES, 1884)

(Fig. o)

Specimen examined. [Urup] 1 ♀ (UR-95-BKU-018).*Distribution.* Kurils; Hokkaido, Rishiri Is., Okushiri Is., Honshu, Sado Is., Oki Isls., Izu Isls. (Ôshima Is. and To-shima Is.), Shikoku, Kyushu, Tsushima Isls., Amakusa Isls.

Subfamily Lamiinae

Plectura (Phlyctidola) metallica metallica (BATES, 1884)

(Fig. p)

Specimens examined. [Itrup] 1 ♂ (IT-97-JSS-052); 1 ♀ (IT-98-DJB-009). [Onekotan] 2 ♂♂ (ON-96-BKU-027).*Distribution.* Sakhalin, Kurils; NE. China, Korean Pen.; Hokkaido.***Monochamus (Monochamus) urussovii*** (BATES, 1884)

(Fig. q)

Specimens examined. [Kunasir] 1 ♀ (KU-94-TWP-010); 1 ♀ (KU-98-BKU-002).*Distribution.* Kurils; northern Palearctic Region; Hokkaido, Rishiri Is.***Miccolamia cleoides*** (BATES, 1884)

(Fig. q)

Specimen examined. [Kunasir] 1 ex. (KU-97-BKU-009).*Distribution.* Kurils; Hokkaido, Okushiri Is., Honshu, Shikoku, Kyushu.**List of the Species Collected from the Russian Continent*****Stenocorus amurensis*** (KRAATZ, 1879)

(Fig. r)

Specimen examined. [Primorsky Kray] 1 ♂ (PK-99-DJB-002).*Distribution.* Russian Far East; NE. China, Korean Pen.***Nivellia sanguinosa*** (GYLLENHAL, 1827)

(Fig. s)

Specimens examined. [Kamchatska Peninsula] 2 ♂♂, 2 ♀♀ (KM-99-DJB-016B); 2 ♂♂, 2 ♀♀ (KM-99-DJB-017A); 1 ♂ (KM-99-TWP-020); 1 ♀ (KM-99-BKU-021).

Distribution. Russian Far East, Sakhalin, Kurils; widespread in the Palearctic Region; Hokkaido.

***Judolia sexmaculata* (LINNÉ, 1758)**

(Fig. t)

Specimens examined. [Kamchatska Peninsula] 1 ♀ (KM-99-TWP-020); 1 ♀ (KM-99-DJB-016B); 1 ♀ (KM-99-DJB-017A); 1 ♂ (KM-99-BKU-021).

Distribution. Russian Far East, Sakhalin, Kurils; widespread in the Palearctic Region; Hokkaido, Rishiri Is.

***Leptura arcuata* PANZER, 1793**

Specimen examined. [Primorsky Kray] 1 ♀ (PK-99-DJB-002).

Distribution. Widespread on the continental side of the Palearctic Region.

***Agapanthia (Agapanthia) villosviridescens* (DE GEER, 1775)**

(Fig. u)

Specimens examined. [Primorsky Kray] 4 ♂♂, 3 ♀♀ (PK-99-DJB-001).

Distribution. Widespread on the continental side of the Palearctic Region.

Acknowledgement

I wish to express my deep appreciation to Dr. Brian K. URBAIN of the School of Fisheries, University of Washington, for his kind arrangement for examination of material used in this report, and also to Dr. Shun-Ichi UENO of the National Science Museum (Nat. Hist.), Tokyo, for his continuous guidance.

要 約

新里達也：千島列島のカミキリムシ科の記録 (3)。—— 米・露・日合同の「千島列島の生物の多様性調査研究」の収集資料のうち、1994年から'99年にかけて採集されたカミキリムシ科甲虫の同定を行い、千島から4亜科18種、カムチャツカ等の大陸ロシア領から2亜科4種の分布記録を公表した。これら合計22種は、同地域からすでに分布が知られており、新記録となる種は認められなかった。

References

- NIISSATO, T., 1997. Collecting records of cerambycid beetles (Coleoptera, Cerambycidae) from the Kuril Archipelago. *Elytra, Tokyo*, **25**: 267–270.
 ——— 2000. Ditto (2). *Ibid.*, **28**: 70.
 * For other references, see NIISSATO (1997, p. 270).