

ち, *P. brendelli* sp. nov., *P. cameronensis* sp. nov., *P. kerleyi* sp. nov.の3種はたがいに近縁であり, 新たに*P. brendelli*種群とした. この仲間は, 腿節の中央部が赤橙色で, 前腿節は太くなるが刺状とならず, ♂の前脛節はわずかに伸長し内側に曲がるが, 内面基部は多くのキマワリ属にみられるようにえぐられることがない. 近縁属の*Plesiamarygmus ovoideus* (FAIRMAIRE)に似ているが, 体側が平行であることなどキマワリ属の特徴をより多くもつのでキマワリ属に含めた. キマワリ属(*Plesiamarygmus*)マルキマワリ属(*Amarygmus*)などを結ぶ種群である.

References

- FAIRMAIRE, L., 1882. Coléoptères Hétéromères de Sumatra. *Notes Leyd. Mus.*, **4**: 219–265.
 HAROLD, E., 1878. Beiträge zur Käferfauna von Japan. *Disch. ent. Z.*, **22**: 5–88.
 MASUMOTO, K., 1990. *Plesiophthalmus* and its allied genera (Coleoptera, Tenebrionidae, Amarygmini), Part 9. *Jpn. J. Ent.*, **58**: 475–505.
 ——— 1999. Additions to *Plesiophthalmus* and its allied genera (Coleoptera, Tenebrionidae, Amarygmini) from East Asia, Part 1. *Elytra, Tokyo*, **27**: 353–370.
 PIC, M., 1923. Nouveaux Coléoptères du Tonkin (1), *Bull. Soc. zool. Fr.*, **48**: 269–271.

Elytra, Tokyo, **29** (1): 73–74, June 15, 2001

A New Locality of *Pterostichus (Nialoe) ogaensis* (Coleoptera, Carabidae)

Seiji MORITA

Higashi-gotanda 5–19–7, Shinagawa-ku, Tokyo, 141–0022 Japan

Looking into a lot of carabids collected by the late Mr. IZUMI, I found a single specimen of an *Abax*-like species. After a careful examination of its male genital organ, it has become evident that the specimen can be determined as *Pterostichus (Nialoe) ogaensis* described by myself. However, its body form, which I mentioned as *Abax*-like, is different from that of the type series. A brief account of the differences is given below.

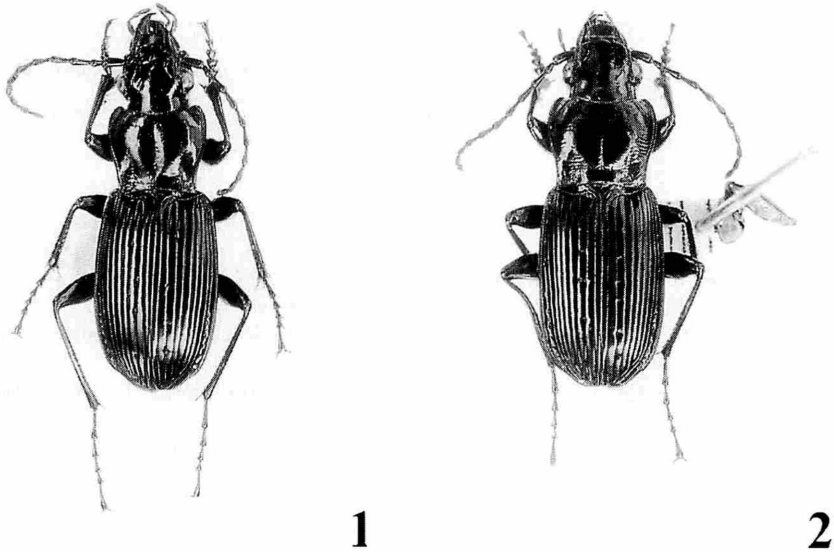
Pterostichus (Nialoe) ogaensis MORITA

Pterostichus (Nialoe) ogaensis MORITA, 1995, *Elytra, Tokyo*, **23**: 283, figs. 1–9.

Specimen examined. 1♂, “Mikawa-rindô/Minamiaizu, Fukushima 1990. VI. 24/A. IZUMI leg.”

Length: 12.4 mm (from apical margin of clypeus to apices of elytra).

Head narrow, PW/HW 1.33 [1.27–1.32 (M 1.31) in 4♂♂ (type series)]; frontal furrows rather deep and straight, and divergent posteriad; frons and vertex smooth; vertex and genae more convex than in the type series.



Figs. 1–2. *Pterostichus (Nialoe) ogaensis* MORITA, ♂; 1, paratype; 2, specimen from Mikawa-rindô.

Pronotum large and square, PW/PL 1.40; sides crenulate near hind angles; disc with transverse wrinkles; basal foveae with coarse punctures and transverse wrinkles; PW/PA 1.30 [1.24–1.27 (M 1.26) in 4♂♂ (type series)]; basal part wide, PW/PB 1.20 [1.25–1.28 (M 1.27) in 4♂♂ (type series)], PA/PB 0.92 [0.99–1.03 (M 1.01) in 4♂♂ (type series)].

Elytra more parallel-sided than in the type series; EW/PW 1.16 [1.22–1.25 (M 1.24) in 4♂♂ (type series)]; EL/EW 1.55; dorsal pores more strongly impressed; left interval III with 5 pores, the first and the last on interval III, the second on stria 3, and the third and the fourth on stria 2, respectively; right interval III with 6 pores, the first joining stria 3, the second and the following three close to stria 2, and the last one on interval III, respectively; interval V with no pore; marginal series consisting of 17 pores on the left, of 16 pores on the right.

Projection of anal sternite shorter than in the type series; aedeagus with more convex tumor at apical third in dorsal view.

Notes. Judging from the ratios of body parts, the wider pronotal base and parallel-sided elytra seem to give this specimen an *Abax*-like appearance. The body size and the ratios of PW/PL and EL/EW are contained in the ranges of individual variation.

The manuscript of this report was read by Dr. Shun-Ichi UENO. I thank him for his valuable corrections. Mrs. Eiko IZUMI made it possible for me to examine this interesting specimen.

Reference

- MORITA, S., 1995. A new *Pterostichus* (Coleoptera, Carabidae) from Kwantô, Central Japan. *Elytra*, Tokyo, **23**: 283–287.