

## Taxonomical Review and a List of the Pselaphine Species (Staphylinidae, Pselaphinae) Known from Japan

Shûhei NOMURA

Department of Zoology, National Science Museum (Nat. Hist.),  
3–23–1 Hyakunin-chô, Shinjuku, Tokyo, 169–0073 Japan

**Abstract** The following ten synonyms, a homonym, two new combinations and other taxonomical changes are proposed by examination of the type specimens of pselaphine species known from Japan. *Phthartomerus* K. SAWADA, 1956, syn. nov. (= *Euplectus* LEACH, 1817); *Phthartomerus nanus* K. SAWADA, 1956 is replaced by *Euplectus* (*Euplectus*) *sawadaianus* nom. nov.; *Typhlacetalius coiffaiti* JEANNEL, 1959, syn. nov. (= *Philoscotus brevis* K. SAWADA, 1957); *Speobatrisesodes coiffaiti* JEANNEL, 1958, syn. nov. (= *Batrisesodes* (*Excavodes*) *stipes* (SHARP, 1874)); *Batrisedellus risor* TANABE et NAKANE, 1990, syn. nov. (= *Batrisedellus nipponensis* (RAFFRAY, 1909)); *Coryphomus brevispina* JEANNEL, 1958, syn. nov. (= *Coryphomodes spinicollis* (SHARP, 1883)); *Batrissoplus coiffaiti* JEANNEL, 1958, syn. nov. (= *B. raffrayi* JEANNEL, 1958); *Batriscenellus punctatus* NOMURA, 1991, syn. nov. (= *B. (Batriscenellus) puncticollis* (SHARP, 1883), comb. nov.); *Batriscocenus furuhatai* KUBOTA, 1943, syn. nov. (= *Batriscenaulax modestus* (SHARP, 1874)); *Triomicrus galloisi* JEANNEL, 1958, syn. nov. (= *T. protervus* (SHARP, 1874)); *Reichenbachia antilope* RAFFRAY, 1909, syn. nov. (= *Trissemus curtus* (SHARP, 1874)); *Trissemus grandicollis* (JEANNEL, 1958), comb. nov. (nec *Bryaxis*). The type specimen of *Acetalius dubius* SHARP, 1883 labelled “paralectotype” is corrected to the holotype because of monotypy. All the Japanese species of the subfamily Pselaphinae and some important synonyms are summerized in a list.

**Key words:** Staphylinidae, Pselaphinae, synonym, homonym, taxonomy, Japan.

### Introduction

Up to the present, 288 species and 20 subspecies of the subfamily Pselaphinae have been known from Japan. One hundred and twenty-one of them were described by David SHARP (1874, 1883), Acille RAFFRAY (1909) and René JEANNEL (1958, 1959). I examined the type specimens of 111 species of them in February 2000 in the Natural History Museum, London (BMNH) and the Muséum National d’Histoire Naturelle, Paris (MHNP), and found some synonyms and taxonomical facts shown below. However, no lectotype is designated in this study, though such an taxonomical act will be needed for some species in the future.

Additionally, I borrowed and examined the holotype of *Phthartomerus nanus* described by SAWADA (1956) as a member of the Faronitae (Bythinoplectitae, Dimerini in recent classification). I recognized that this species should be classified into the genus *Euplectus* of the Euplectitae, and the newly combined name will become a secondary

homonym. Therefore, I propose a replacement name for this species in the present study.

### Supertribe Euplectitae

#### Genus *Euplectus* LEACH

*Euplectus* LEACH, 1817, Zool. Misc., **3**: 82. Type species: *Euplectus reichenbachii* LEACH (= *Pselaphus nanus* REICHENBACH), by monotypy.

*Phthartomerus* K. SAWADA, 1956, Akitu, Kyoto, **5**: 102. Type species: *Phthartomerus nanus* K. SAWADA, by monotypy. *Syn. nov.*

(See NEWTON & CHANDLER, 1989 for other synonymies)

*Remarks.* The genus *Phthartomerus* has been classified in the tribe Dimerini of the supertribe Bythinoplectitae according to NEWTON and CHANDLER (1989). However, it is determined as a junior synonym of the genus *Euplectus* on the basis of an examination of the type specimen of the type species in this study.

#### *Euplectus (Euplectus) sawadaianus* nom. nov.

[Japanese name: Sawada-naga-arizukamushi]

*Phthartomerus nanus* K. SAWADA, 1957, Akitu, Kyoto, **5**: 102. (Preoccupied by *Euplectus nanus* (REICHENBACH, 1816).)

*Type material examined.* *Phthartomerus nanus*, holotype (Figs. 1, 2) (originally designated), male, "Katsuo-ji, Pref. Osaka, 18. IV. 1953 / HOLOTYPE (red) / *Phthartomerus nanus* Sawada".

*Remarks.* The holotype of *Phthartomerus nanus* is preserved in SAWADA's collection in a good condition. It is determined as a species of the genus *Euplectus*. The specific name combined with the generic name *Euplectus* is preoccupied by REICHENBACH's name. I therefore propose a replacement name for this species as shown above.

This species is very similar to the type species *E. reichenbachii* LEACH (= *E. nanus* (REICHENBACH)) in having the deep and distinct transverse sulcus on the frons. It is, however, clearly different in lacking the occipital fovea on the posteromedian margin of the vertex. Though five subgenera are recognized in this genus according to NEWTON and CHANDLER (1989), subgeneric classification has not been defined as yet. In the present study, this species is tentatively classified into the nominotypical subgenus based on the similarity to the type species.

#### *Acetalius dubius* SHARP

[Japanese name: Harafuto-arizukamushi]

*Acetalius dubius* SHARP, 1883, Trans. ent. Soc. London, **1883**: 322. — RAFFRAY, 1904, Anns. Soc. ent. Fr., **73**: 254; 1908, Gen. Ins., (64): 256; 1911, Coleopt. Cat., (27): 111. — PARK, 1948 b, Bull. Chicago Acad. Sci., **8**: 215. — JEANNEL, 1958, Mém. Mus. Hist. nat., Paris, (A), **18**: 82. — BE-

SUCHET, 1985, *Revue suisse Zool.*, **92**: 763. — NOMURA, 1988 a, *Kontyû*, Tokyo, **56**: 253; 1989, *Check List Jpn. Ins.*, Fukuoka, [**1**]: 287.

*Material examined.* Holotype (Figs. 3, 4) (monotypy), male in BMNH, “PARALECTOTYPE (round label, pale blue-margined)/Type H. T. (round label, red-margined)/Acetalius dubius. Type D S. Suwa. 8. 4. 1881. Lewis. Japan. (original card to which the type was mounted)/Japan. G. Lewis. 1910-320. (yellow-lined)/Acetalius dubius Sharp ♂ Cl. Besuchet dét. X 1981”.

*Remarks.* The single type specimen of this species preserved in BMNH is labelled as “paralectotype”, though the type of this species is only one male according to SHARP (1883), JEANNEL (1958) and BESUCHET (1986). Therefore, the type must be the holotype.

### *Philoscotus brevis* K. SAWADA

[Japanese name: Marugata-ochiba-arizukamushi]

*Philoscotus brevis* K. SAWADA, 1957, *Akitu*, Kyoto, **6**: 24. — NOMURA, 1988 b, *Kontyû*, Tokyo, **56**: 741; 1989, *Check List Jpn. Ins.*, Fukuoka, [**1**]: 288.

*Typhlacetalius coiffaiti* JEANNEL, 1959, *Revue fr. Ent.*, **26**: 17. *Syn. nov.*

*Philoscotus coiffaiti*: BESUCHET, 1985, *Revue suisse Zool.*, **92**: 762 (genus synonymized). — NOMURA, 1988 b, *Kontyû*, Tokyo, **56**: 743; 1989, *Check List Jpn. Ins.*, Fukuoka, [**1**]: 288.

*Material examined.* *Typhlacetalius coiffaiti*, holotype (by monotypy), female in MHNP, “Japon Pref. Okayama Niimi 12/VIII/57 H. C./Typhlacetalius coiffaiti n.”.

*Remarks.* According to JEANNEL’s description, *Typhlacetalius coiffaiti* is different from *Philoscotus brevis* in having two basal foveae on each elytron (four foveae in *P. brevis*). I examined the type of *T. coiffaiti* JEANNEL and proved it to have four basal foveae on each elytron. The former species is therefore regarded as a junior synonym of the latter.

## Supertribe Batrisitae

### *Batrisodes (Excavodes) stipes* (SHARP)

[Japanese name: Arame-toge-arizukamushi]

*Batrisus stipes* SHARP, 1874, *Trans. ent. Soc. London*, **1874**: 115; 1883, *ibid.*, **1883**: 314.

*Batrisodes stipes*: RAFFRAY, 1904, *Anns. Soc. ent. Fr.*, **73**: 90; 1908, *Gen. Ins.*, (64): 161; 1911, *Coleopt. Cat.*, (27): 65. — PARK, 1948 a, *Bull. Chicago Acad. Sci.*, **8**: 155; 1948 b, *ibid.*, **8**: 211. — JEANNEL, 1958, *Mém. Mus. Hist. nat.*, Paris, (A), **18**: 18. — NOMURA, 1989, *Check List Jpn. Ins.*, Fukuoka, [**1**]: 289.

*Speobatrisodes coiffaiti* JEANNEL, 1958, *Mém. Mus. Hist. nat.*, Paris, (A), **18**: 42. — NOMURA, 1989, *Check List Jpn. Ins.*, Fukuoka, [**1**]: 290. *Syn. nov.*

*Material examined.* *Batrisus stipes*, syntype male in BMNH, “Japan. G. Lewis. 1910–320./Batrisus stipes. Ind. typ. D. S./SYNTYPE (round label, pale blue-margined)/Batrisodes stipes Sh. R. Jeannel det., 195”.

*Speobatrisodes coiffaiti*, holotype

(by monotypy), female in MHNP, “Japon Pref. Kyoto Mizuho-cho 24/VII/57 H. C. / 20 / TYPE (red) / *Basitrodes Coiffaiti* n.”

*Remarks.* The holotype of *Speobatrises coiffaiti* JEANNEL is a female, which completely coincides with a female of *Batrises stipes* (SHARP) in all the external characters.

### *Batrisedellus nipponensis* (RAFFRAY)

[Japanese name: Nippon-munetoge-arizukamushi]

*Batrises nipponensis* RAFFRAY, 1909, Anns. Soc. ent. Fr., **78**: 23.

*Batrisedellus nipponensis*: JEANNEL, 1958, Mém. Mus. Hist. nat., Paris, (A), **18**: 38. — NOMURA, 1989, Check List Jpn. Ins., Fukuoka, [1]: 289.

*Batrisedellus risor* TANABE et NAKANE, 1990, Kontyû, Tokyo, **57**: 735. *Syn. nov.*

*Material examined.* Syntype, male in MHNP, “(red, small and square label) / Japon Kyoto / Museum Paris 1917 Coll. A. Raffray / TYPE (red) / *B. nipponensis* A. Raffray det.”

*Remarks.* The holotype of this species is identical with *Batrisedellus risor* described from Yakushima Is., Southwest Japan.

### *Coryphomodes spinicollis* (SHARP)

[Japanese name: Futaana-munetoge-arizukamushi]

*Batrises spinicollis* SHARP, 1883, Trans. ent. Soc. London, **1883**: 304.

*Batrises dionysius* SCHAUFUSS, 1888, Cat. Psel., 12 (replacement name by homonym for *Batrises spinicollis* MOTSCHULSKY, 1858). — RAFFRAY, 1904, Anns. Soc. ent. Fr., **73**: 89; 1908, Gen. Ins., (64): 161; 1911, Coleopt. Cat., (27): 65. — PARK, 1948 a, Bull. Chicago Acad. Sci., **8**: 153; 1948 b, *ibid.*, **8**: 209.

*Coryphomus spinicollis*: JEANNEL, 1958, Mém. Mus. Hist. nat., Paris, (A), **18**: 48.

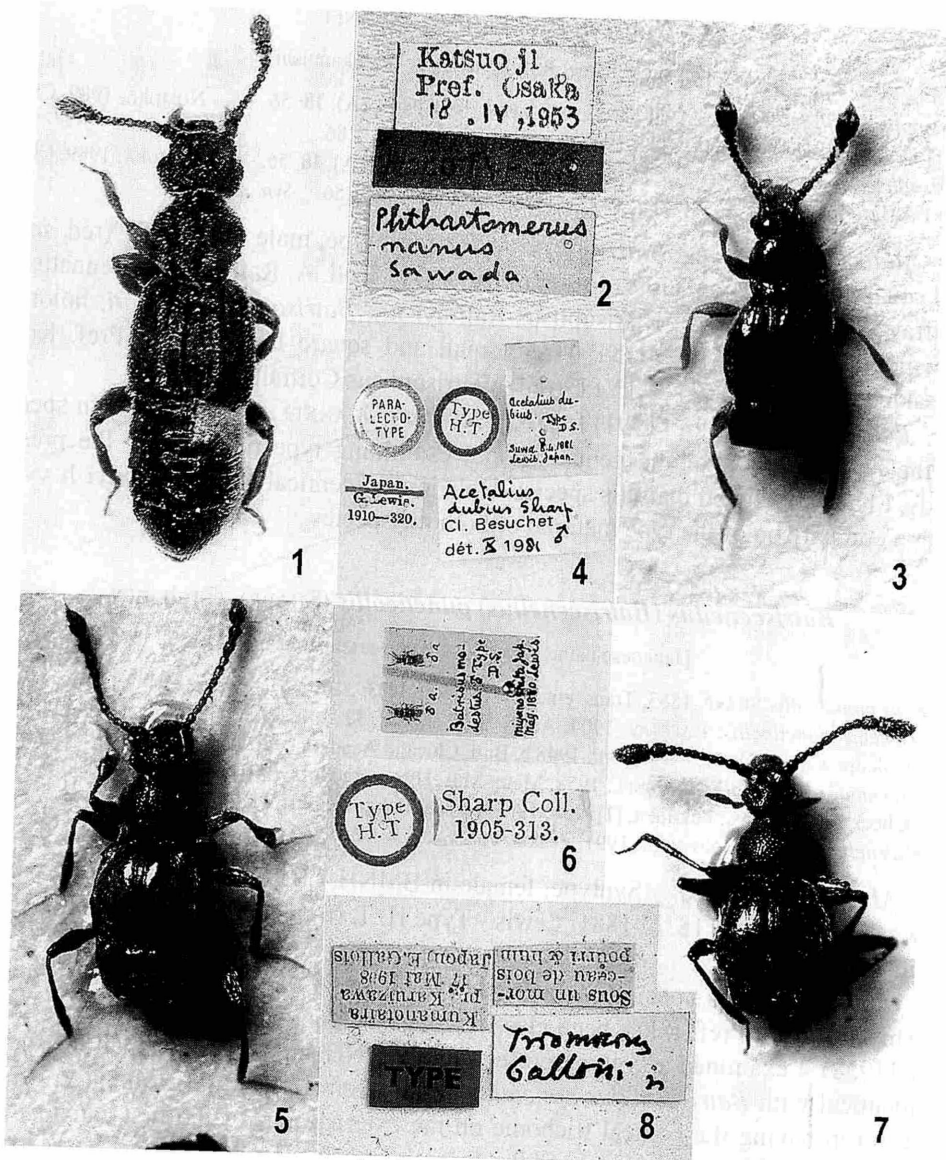
*Coryphomodes spinicollis*: JEANNEL, 1960, Bull. Brit. Mus. (nat. Hist.), Ent., **9**: 417. — NOMURA, 1989, Check List Jpn. Ins., Fukuoka, [1]: 289.

*Coryphomus brevispina* JEANNEL, 1958, Mém. Mus. Hist. nat., Paris, (A), **18**: 48. *Syn. nov.*

*Coryphomodes brevispina*: JEANNEL, 1960, Bull. Brit. Mus. (nat. Hist.), Ent., **9**: 417. — NOMURA, 1989, Check List Jpn. Ins., Fukuoka, [1]: 289.

*Material examined.* *Batrises spinicollis*, holotype (by monotypy), female in BMNH, “*Batrises spinicollis*. Type D. S. Hitoyoshi Japan 1.5.1881. Lewis. / Type (round and red-margined) / Japan G. Lewis. 1910-320. / Yuyama. 10. V-14. V. 81. / *Coryphomus spinicollis* Sh R Jeannel det., 195”. *Coryphomus brevispina*, holotype (by monotypy), female in MHNP, “Japon Pref. Mie Ise: Shimajiyama 27/VII/57 H. C. / 18 / TYPE (red) / *brevispina* n sp.”

*Remarks.* *Coryphomodes brevispina* described by JEANNEL (1958) from Mie Prefecture, Central Japan is synonymous with *Coryphomodes spinicollis* (SHARP) as the result of a comparison of the holotypes.



Figs. 1-8. Habitus (Figs. 1, 3, 5, 7) and type labels (Figs. 2, 4, 6, 8) of the type specimens of some Japanese pselaphine species.—1, 2, Holotype of *Phthartomerus nanus* K. SAWADA in SAWADA'S collection; 3, 4, holotype of *Acetalius dubius* SHARP in BMNH; 5, habitus of syntype of *Batrissus modestus* SHARP in BMHN; 6, syntypes with handwritten data on a card (above); 7, 8, holotype of *Triomicrus galloisi* JEANNEL in MHNP.

***Batrisoplisus raffrayi* JEANNEL**

[Japanese name: Raffray-fusahige-arizukamushi]

*Batrisoplisus raffrayi* JEANNEL, 1958, Mém. Mus. Hist. nat., Paris, (A), **18**: 56. — NOMURA, 1989, Check List Jpn. Ins., Fukuoka, [1]: 289; 1991, Esakia, Fukuoka, (30): 286.

*Batrisoplisus coiffaiti* JEANNEL, 1958, Mém. Mus. Hist. nat., Paris, (A), **18**: 55. — NOMURA, 1989, Check List Jpn. Ins., Fukuoka, [1]: 289; 1991, Esakia, Fukuoka, (30): 286. *Syn. nov.*

*Material examined.* *Batrisoplisus raffrayi*, syntype, male in MHNP, “(red, small and square label)/ Japon Kioto / Muséum Paris 1917 Coll. A. Raffray / *B. antennatus* A. Raffray det. / TYPE (red) / *Batrisoplisus Raffrayi* n.”. *Batrisoplisus coiffaiti*, holotype (by monotypy), male in MHNP, “(red, small and square label)/ Japon Pref. Kochi Kusaka 25/VIII/57 H. C. / 8 / TYPE (red) / *Batrisoplisus Coiffaiti* n.”

*Remarks.* NOMURA (1991) treated *B. coiffaiti* JEANNEL as a little-known species of the *raffrayi* group of the genus without examining type material. In the present study, I have concluded that this species is obviously identical with *B. raffrayi* JEANNEL after a comparison of the type material of both the species.

***Batriscenellus (Batriscenellus) puncticollis* (SHARP), comb. nov.**

[Japanese name: Arame-harakubo-arizukamushi]

*Batrisus puncticollis* SHARP, 1883, Trans. ent. Soc. London, **1883**: 316.

*Batrisocenus puncticollis*: RAFFRAY, 1904, Anns. Soc. ent. Fr., **73**: 100; 1908, Gen. Ins., (64): 174; 1911, Coleopt. Cat., (27): 71. — PARK, 1948 b, Bull. Chicago Acad. Sci., **8**: 212.

*Batriscenaulax puncticollis*: JEANNEL, 1958, Mém. Mus. Hist. nat., Paris, (A), **18**: 60. — NOMURA, 1989, Check List Jpn. Ins., Fukuoka, [1]: 288; 1991, Esakia, Fukuoka, (30): 332.

*Batriscenellus punctatus* NOMURA, 1991, Esakia, Fukuoka, (30): 303. *Syn. nov.*

*Material examined.* Syntype, female in BMNH, “*Batrisus puncticollis*. Type D. S. Kashiwagi. Japan. 18. 6. 1881. Lewis. / Type H. T. (round and red-margined) / Sharp Coll. 1905-313”.

*Remarks.* This species is described on the basis of three females collected at Kashiwagi, Nara Pref. It has been classified into the genus *Batriscenaulax* after JEANNEL (1958). I examined a syntype preserved in BMNH and concluded that this species is identical with *Batriscenellus punctatus* known from Honshu (Hiroshima Pref.) and Kyushu in having the conical trichome on the external part of the first antennal segment, the densely punctate head and the coarsely punctate pronotum.

***Batriscenaulax modestus* (SHARP)**

[Japanese name: Hakesune-arizukamushi]

*Batrisus modestus* SHARP, 1874, Trans. ent. Soc. London, **1874**: 116; 1883, *ibid.*, **1883**: 320.

*Batrisocenus modestus*: RAFFRAY, 1904, Anns. Soc. ent. Fr., **73**: 98; 1908, Gen. Ins., (64): 172; 1911, Coleopt. Cat., (27): 70. — PARK, 1948 b, Bull. Chicago Acad. Sci., **8**: 212.

*Batriscenaulax modestus*: JEANNEL, 1958, Mém. Mus. Hist. nat., Paris, (A), **18**: 58. — NOMURA, 1989, Check List Jpn. Ins., Fukuoka, [1]: 288; 1991, Esakia, Fukuoka, (30): 331.

*Batrisocenus furuhatai* KUBOTA, 1943, Trans. Kansai ent. Soc., **9**: 6. *Syn. nov.*  
*Batriscenaulax furuhatai*: JEANNEL, 1958, Mém. Mus. Hist. nat., Paris, (A), **18**: 59. — NOMURA, 1989, Check List Jpn. Ins., Fukuoka, [1]: 288; 1991, Esakia, Fukuoka, (30): 286.

*Material examined.* *Batrisus modestus*, syntypes, 2 males in BMNH, “♂ a. (for left male) ♂ a (for right male) *Batrisus modestus*. ♂ Type D. S. Miyanoshita Jap. May. 1880. Lewis / Type H. T. (round and red-margined) / SHARP Coll. 1905–313”.

*Remarks.* SHARP (1883) recognized two forms in this species, namely, one with medially swollen fore tibia in the male collected from Miyanoshita and the other with slender fore tibia. He designated the former as the typical one of *modestus*. After an examination of the two syntypes from Miyanoshita, the swollen (typical) form coincides with *B. furuhatai* (KUBOTA) in the feature of the fore tibia. Therefore, *B. furuhatai* should be a junior synonym of *B. modestus*, and the slender form is considered to be *B. longipes* JEANNEL.

On the other hand, the *Batriscenaulax* specimen which NOMURA (1991) identified with *modestus* is now regarded as a variant in the male genitalia of *B. longipes*.

### Supertribe Goniaceritae

#### *Triomicrus protervus* (SHARP)

[Japanese name: Marumune-arizukamushi]

*Bryaxis protervus* SHARP, 1874, Trans. ent. Soc. London, **1874**: 121; 1883, *ibid.*, **1883**: 326.  
*Triomicrus protervus*: RAFFRAY, 1904, Anns. Soc. ent. Fr., **73**: 232; 1908, Gen. Ins., **64**: 237; 1911, Coleopt. Cat., (27): 110. — PARK, 1948, Bull. Chicago Acad. Sci., **8**: 214. — JEANNEL, 1958, Mém. Mus. Hist. nat., Paris, (A), **18**: 71. — NOMURA, 1989, Check List Jpn. Ins., Fukuoka, [1]: 291. — LÖBL *et al.*, 1998 a, Bull. natn. Sci. Mus., Tokyo, (A), **24**: 89.  
*Triomicrus galloisi* JEANNEL, 1958, Mém. Mus. Hist. nat., Paris, (A), **18**: 72. — NOMURA, 1989, Check List Jpn. Ins., Fukuoka, [1]: 291. — LÖBL *et al.*, 1998 a, Bull. natn. Sci. Mus., Tokyo, (A), **24**: 69 (“type material appears to be lost”). *Syn. nov.*

*Material examined.* *Bryaxis protervus*, lectotype, female in BMNH (see LÖBL *et al.*, 1998 a). *Triomicrus galloisi*, holotype (by monotypy), female in MHNP, “Kumano-taira pr. Karuizawa 17 Mai 1908 Japon) E. Gallois / Sous un morceau de bois pourri & hum / TYPE (red) / *Triomicrus Galloisi* n.”

*Remarks.* In LÖBL *et al.* (1998 a), the type material of *T. galloisi* was not examined, and it was referred to “not traceable”. However, I found out the holotype of this species in the collection of MHNP on my visit, and recognized that it is quite identical with females of *T. protervus* (SHARP). In conclusion, *T. galloisi* becomes a junior synonym of *T. protervus* in the present study.

#### *Trissemus curtus* (SHARP)

[Japanese name: Higebuto-enma-arizukamushi]

*Bryaxis curtus* SHARP, 1874, Trans. ent. Soc. London, **1874**: 124; 1883, *ibid.*, **1883**: 324.

- Reichenbachia curta*: RAFFRAY, 1904, Anns. Soc. ent. Fr., **73**: 217; 1908, Gen. Ins., (64): 253; 1911, Coleopt. Cat., (27): 98. — PARK, 1948, Bull. Chicago Acad. Sci., **8**: 213.
- Trissemus curtus*: JEANNEL, 1958, Mém. Mus. Hist. nat., Paris, (A), **18**: 102. — NOMURA, 1989, Check List Jpn. Ins., Fukuoka, [1]: 290.
- Reichenbachia antilope* RAFFRAY, 1909, Anns. Soc. ent. Fr., **78**: 30. *Syn. nov.*
- Trissemus antilope*: JEANNEL, 1958, Mém. Mus. Hist. nat., Paris, (A), **18**: 103. — NOMURA, 1989, Check List Jpn. Ins., Fukuoka, [1]: 290.

*Material examined.* *Bryaxis curtus*, syntype, male in BMNH, “Type H. T. (round and red-margined)/Japan (round)/Sharp Coll. 1905-313./*Bryaxis curtus* ♂ Type. D. S.”. *Reichenbachia antilope*, holotype (by monotypy), probably male in MHNP, “(red, small and square label)/Japon/Muséum Paris 1917 Coll. A. Raffray/TYPE (red)/R. antilope A. Raffray det. /Antilope R.”.

*Remarks.* The syntypes of *T. curtus* preserved in BMNH were in a good condition. The secondary sexual character on the male antenna of this species completely agrees with that of *T. antilope* (RAFFRAY) described and illustrated by JEANNEL (1958). JEANNEL did not regard them as the same species, probably because he did not examine the type material of *T. curtus*. According to JEANNEL (1958), he only examined a female cotype of *T. curtus* in RAFFRAY’s collection.

In the holotype of *T. antilope*, apical segments of the antennae are lost.

### *Trissemus grandicollis* (JEANNEL), comb. nov.

[Japanese name: Ryûgadô-enma-arizukamushi]

- Bryaxis grandicollis* JEANNEL, 1958, Mém. Mus. Hist. nat., Paris, (A), **18**: 95. — NOMURA, 1989, Check List Jpn. Ins., Fukuoka, [1]: 290. — LÖBL *et al.*, 1998 b, Spec. Divers., Sapporo, **3**: 267 (“holotype is lost”).

*Material examined.* *Bryaxis grandicollis*, holotype (by monotypy), female in MHNP, “Japon Pref. Kochi Ryuga 24/VIII/57 H. C./32/TYPE (red)/Muséum Paris Coll. Générale/Bythobletus grandicollis/Brachygluta det. Löbl 1997”.

*Remarks.* *Bryaxis grandicollis* was described by JEANNEL (1958) from Ryuga (probably means around Ryûga-dô Cave) on the basis of a female. The holotype was not examined in LÖBL *et al.* (1998 b). I examined it in MHNP, and determined it as a member of the genus *Trissemus*.

## A List of Pselaphine Species Known from Japan

Family Staphylinidae

Subfamily Pselaphinae

Supertribe Bythinoplectitae

Tribe Mayetini

Genus *Mayetia* MULSANT *et* REY

1. *M. (Promayetia) ishiana* NOMURA *et* NAOMI, 1996 [Ishii-tsuchi-arizukamushi]



## Tribe Bythinoplectini

## Subtribe Bythinoplectina

Genus *Nipponozethus* COULON, 1989

2. *N. delicatulus* (JEANNEL, 1958) [Tosa-hime-shumoku-arizukamushi]  
 3. *N. lativentris* (JEANNEL, 1958) [Hime-shumoku-arizukamushi]

## Subtribe Pyxidicerina

Genus *Parapyxidicerus* K. SAWADA, 1964

4. *P. carinatus* K. SAWADA, 1964 [Shumoku-arizukamushi]

## Supertribe Euplectitae

## Tribe Euplectini

## Subtribe Euplectina

Genus *Euplectus* LEACH, 1817

5. *E. (Euplectus) sawadaianus* NOMURA, 2001, nom. nov. [Sawada-naga-arizukamushi] (Nom. nov. pro *Phthartomerus nanus* K. SAWADA, 1956)

Genus *Leptoplectus* CASEY, 1908

6. *L. nipponensis* (JEANNEL, 1958)

## Subtribe Bibloplectina

Genus *Philopsis* RAFFRAY, 1893

7. *P. sulcifrons* JEANNEL, 1958

## Subtribe Bibloporellina

Genus *Pseudozibus* JEANNEL, 1956

8. *P. longicollis* JEANNEL, 1958 [Hoso-hime-arizukamushi]

## Subtribe Bibloporina

Genus *Bibloporus* THOMSON, 1895

9. *B. (Synbibloporus) japonicus* K. SAWADA, 1956 [Yamato-kikawa-arizukamushi]

## Subtribe Acetaliina

Genus *Acetalius* SHARP, 1885

10. *A. dubius* SHARP, 1883 [Harafuto-arizukamushi]  
 11. *A. pilosus* BESUCHET, 1985 [Kebuka-harafuto-arizukamushi]

Genus *Philoscotus* K. SAWADA, 1957 (= *Typhlacetalius* JEANNEL, 1959)

12. *P. venustus* NOMURA, 1988 [Hime-ochiba-arizukamushi]  
 13. *P. tenuis* NOMURA, 1988 [Hoso-ochiba-arizukamushi]  
 14. *P. septentrionalis* NOMURA, 1988 [Kita-ochiba-arizukamushi]  
 15. *P. sylvestris* NOMURA, 1988 [Mori-ochiba-arizukamushi]  
 16. *P. brevis* K. SAWADA, 1957 [Marugata-ochiba-arizukamushi]  
 17. *P. longulus* K. SAWADA, 1957 [Naga-ochiba-arizukamushi]  
 (= *P. coiffaiti* (JEANNEL, 1959), syn. nov.)

18. *P. persimilis* NOMURA, 1988  
[Ochiba-arizukamushi]
19. *P. rostralis* NOMURA, 1988  
[Kuchiboso-ochiba-arizukamushi]
- Supertribe Batrisitae  
Tribe Batrisini  
Subtribe Batrisini  
Genus *Batrisodes* REITTER, 1882
20. *B. (Batrisodes) coiffaiti* JEANNEL, 1958  
[Hime-munetoge-arizukamushi]
21. *B. (Excavodes) stipes* (SHARP, 1874)  
[Arame-toge-arizukamushi]  
(= *Speobatrises coiffaiti* JEANNEL, 1958, syn. nov.)
22. *B. (E.) dorsalis* JEANNEL, 1958  
[Takao-toge-arizukamushi]
23. *B. (E.) rugicollis* (SHARP, 1883)  
[Hakone-toge-arizukamushi]
24. *B. (E.) acutifrons* JEANNEL, 1958
25. *B. (E.) caviceps* (SHARP, 1883)  
[Osa-munetoge-arizukamushi]
26. *B. (E.) ornatifrons* (SHARP, 1883)  
[Nikkô-ko-oni-arizukamushi]
27. *B. (E.) angustus* (SHARP, 1874)
28. *B. (E.) galloisi* JEANNEL, 1958
29. *B. (Pubimodes) harmandi*  
(RAFFRAY, 1904)
30. *B. (P.) globulifer* JEANNEL, 1958
- Genus *Basitrodes* JEANNEL, 1958
31. *B. vestitus* (SHARP, 1883)
32. *B. oscillator* (SHARP, 1883)  
[Joh-etsu-toge-arizukamushi]
33. *B. laticollis* JEANNEL, 1958
34. *B. palpalis* (SHARP, 1883)
35. *B. longulus* JEANNEL, 1958
36. *B. punctipennis* (SHARP, 1883)
37. *B. vulgaris* (RAFFRAY, 1909)  
[Tsuyabane-munetoge-arizukamushi]
38. *B. acuminatus* (SHARP, 1883)
39. *B. cristatus* (JEANNEL, 1958)
- Genus *Speobatrises* JEANNEL, 1958
40. *S. punctaticeps* JEANNEL, 1958 [Horaana-toge-arizukamushi]
- Genus *Batrisodellus* JEANNEL, 1958
41. *B. nipponensis* (RAFFRAY, 1909)  
[Nippon-munetoge-arizukamushi]  
(= *B. risor* TANABE et NAKANE, 1989, syn. nov.)
42. *B. coprea* TANABE et NAKANE, 1989
43. *B. cerberus* TANABE et NAKANE, 1989
- Genus *Kigatrodes* JEANNEL, 1958
44. *K. solitalius* (SHARP, 1883)
45. *K. gracilis* (SHARP, 1883)

Genus *Batristilbus* RAFFRAY, 1909

46. *B. politus* (SHARP, 1883)  
[Eguri-chihiro-arizukamushi]
47. *B. concolor* (SHARP, 1883)  
[Tsuya-chihiro-arizukamushi]
48. *B. trichothorax* TANOKUCHI, 1988

Genus *Petaloscapus* JEANNEL, 1958

49. *P. basicornis* (SHARP, 1883)  
[Higebuto-munetoge-arizukamushi]
50. *P. nasutus* JEANNEL, 1958
51. *P. ornatus* (SHARP, 1874)
52. *P. fissifrons* (SHARP, 1874)  
52 a. *P. f. stricticollis* JEANNEL, 1958
53. *P. temporalis* JEANNEL, 1958  
[Erahari-munetoge-arizukamushi]
54. *P. sasajii* NOMURA, 2001  
[Sasaji-munetoge-arizukamushi]
- 53 a. *P. t. yoshidai* NOMURA, 2001
55. *P. hirsutus* TANOKUCHI, 1986  
[Hamamatsu-munetoge-arizukamushi]

Genus *Tribasodes* JEANNEL, 1958

56. *T. longipes* JEANNEL, 1958  
[Doboso-munetoge-arizukamushi]
57. *T. longicornis* (SHARP, 1883)  
[Higeboso-munetoge-arizukamushi]
58. *T. dentatus* JEANNEL, 1958

Genus *Tribasodites* JEANNEL, 1960

59. *T. picticornis* NOMURA, 1986 [Kazari-munetoge-arizukamushi]

Genus *Batrisoschema* REITTER, 1884

60. *B. euplectiforme* (SHARP, 1883) [Kuchiki-munetoge-arizukamushi]

Genus *Coryphomodes* JEANNEL, 1960

61. *C. spinicollis* (SHARP, 1883) [Futaana-munetoge-arizukamushi] (= *C. brevispina* (JEANNEL, 1958), syn. nov.)

Genus *Batrisoplisus* RAFFRAY, 1908

62. *B. nomurai* LÖBL, 1998  
[Fusahige-arizukamushi]  
(nom. nov. pro *B. antennatus* WEISE, 1877)
63. *B. galloisi* JEANNEL, 1958  
[Gallois-fusahige-arizukamushi]
64. *B. venustus* JEANNEL, 1958  
[Hime-fusahige-arizukamushi]
65. *B. raffrayi* JEANNEL, 1958  
[Raffray-fusahige-arizukamushi]  
(= *B. coiffaiti* JEANNEL, 1958, syn. nov.)
66. *B. sagamianus* NOMURA, 1991  
[Sagami-fusahige-arizukamushi]
67. *B. sawadai* NOMURA, 1991
68. *B. satsumanus* NOMURA, 1991
69. *B. subtilis* NOMURA, 1991
70. *B. tenuiformis* NOMURA, 1991
71. *B. esakii* NOMURA, 1991  
[Esaki-fusahige-arizukamushi]
72. *B. tosanus* NOMURA, 1991
73. *B. tanabei* NOMURA, 1991

74. *B. okamotoi* NOMURA, 1991
76. *B. monostatos* NOMURA, 1991  
[Okinawa-medaka-arizukamushi]
78. *B. tamino* NOMURA, 1991  
[Tamino-medaka-arizukamushi]
80. *B. volcaninsulanus* NOMURA, 1991
82. *B. inermis* NOMURA, 1991
75. *B. amamianus* NOMURA, 1991  
[Amami-fusahige-arizukamushi]
77. *B. torticornis* NOMURA, 1991  
[Nejirehige-medaka-arizukamushi]
79. *B. constrictus* NOMURA, 1991  
[Kubire-medaka-arizukamushi]
81. *B. uroceratus* NOMURA, 1991  
[Shiritoge-arizukamushi]
- 81 a. *B. u. brevispinis* NOMURA, 1991
83. *B. parallelus* NOMURA, 1991

Genus *Batriscenellus* JEANNEL, 1958

84. *B. (Batriscenellus) japonicus* (SHARP, 1883)
86. *B. (B.) fallax* (SHARP, 1883)  
[Hime-harakubo-arizukamushi]
88. *B. (B.) puncticollis* (SHARP, 1883)  
[Arame-harakubo-arizukamushi]  
(=*B. punctatus* NOMURA, 1991, syn. nov.)
90. *B. (B.) omogensis* NOMURA, 1991  
[Omogo-harakubo-arizukamushi]
92. *B. (Nipponoscenellus) transformis*  
NOMURA, 1991
94. *B. (S.) shiranui* NOMURA, 1991
96. *B. (S.) insulicola* NOMURA, 1991  
[Shima-tsuya-arizukamushi]
98. *B. (S.) pilosellus* NOMURA, 1991  
[Kemon-tsuya-arizukamushi]
100. *B. (Batriscenellinus) uenoi* NOMURA, 1991  
[Ueno-tsuya-arizukamushi]
85. *B. (B.) fragilis* (SHARP, 1883)  
[Hoso-harakubo-arizukamushi]
87. *B. (B.) vicarius* LÖBL, 1973
89. *B. (B.) kujumontanus* NOMURA, 1991  
[Kyushu-harakubo-arizukamushi]
91. *B. (B.) nodulifer* NOMURA, 1991
93. *B. (Scaioscenellus) similis* (SHARP, 1883)  
[Anabara-arizukamushi]
95. *B. (S.) ohishii* NOMURA, 1991  
[Ohishi-tsuya-arizukamushi]
97. *B. (S.) orientalis* LÖBL, 1973
99. *B. (S.) sakaii* NOMURA, 1991  
[Sakai-tsuya-arizukamushi]

Genus *Babascenellus* NOMURA, 1995

101. *B. macroscapus* NOMURA, 1995 [Baba-tsunohige-arizukamushi]

Genus *Batriscenaulax* JEANNEL, 1958

102. *B. modestus* (SHARP, 1874)  
[Hakesune-arizukamushi]  
(=*B. furuhatai* (KUBOTA, 1943), syn. nov.)
104. *B. kleinzach* NOMURA, 1991  
[Munabiro-hakesune-arizukamushi]
106. *B. nagensis* NOMURA, 1991  
[Nago-hakesune-arizukamushi]
103. *B. longipes* JEANNEL, 1958  
[Nagasune-arizukamushi]
- 103 a. *B. l. kumaso* NOMURA, 1991
- 103 b. *B. l. hayato* NOMURA, 1991  
[Hayato-nagasune-arizukamushi]
105. *B. kunigamensis* NOMURA, 1991  
[Kunigami-hakesune-arizukamushi]

Genus *Physomerinus* JEANNEL, 1952

107. *P. pedator* (SHARP, 1883)  
[Momokobu-arizukamushi]
108. *P. schenklingi* (RAFFRAY, 1912)  
[Schenkling-momobuto-arizukamushi]  
(=*P. akanensis* LÖBL, 1973)
109. *P. hasegawai* NOMURA, 1991  
[Hasegawa-momobuto-arizukamushi]

Genus *Arthromelodes* JEANNEL, 1954

110. *A. punctifrons* NOMURA, 1991  
[Amami-hisago-arizukamushi]
111. *A. giganteus* NOMURA, 1991  
[Oh-hisago-arizukamushi]
112. *A. pilicollis* NOMURA, 1991
113. *A. kiiensis* NOMURA, 1991
114. *A. gyoja* NOMURA, 1991
115. *A. thysanovertris* NOMURA, 1991  
[Fusa-hisago-arizukamushi]
116. *A. corniventris* NOMURA, 1991
117. *A. mercurius* NOMURA, 1991
118. *A. hikosanus* NOMURA, 1991
119. *A. loebli* NOMURA, 1991  
[Shikoku-hisago-arizukamushi]
120. *A. dilatatus* (RAFFRAY, 1909)
- 120 a. *A. d. daibosatsuanus*  
NOMURA, 1991
- 120 b. *A. d. shiranemontanus*  
NOMURA, 1991
- 120 c. *A. d. fujimontanus* NOMURA, 1991
121. *A. sinuatipes* NOMURA, 1991
122. *A. aizuanus* NOMURA, 1991
123. *A. saikaiensis* NOMURA, 1991
124. *A. crucifer* NOMURA, 1991
125. *A. optatus* (SHARP, 1874)

Genus *Batrisceniola* JEANNEL, 1958

126. *B. dissimilis* (SHARP, 1874)  
[Anazu-arizukamushi]
127. *B. hiranoi* NOMURA, 1991  
[Hirano-anazu-arizukamushi]
128. *B. semipunctulata* (RAFFRAY, 1909)  
[Mengata-arizukamushi]

## Supertribe Goniaceritae

## Tribe Iniocyphini

## Subtribe Natypleurina

Genus *Morana* SHARP, 1875

129. *M. discedens* SHARP, 1874  
[Mame-arizukamushi]
130. *M. elegans* TANOKUCHI, 1988  
[Tohkai-mame-arizukamushi]
131. *M. puella* TANABE et NAKANE, 1990  
[Kawara-mame-arizukamushi]
132. *M. oni* TANABE et NAKANE, 1990  
[Oni-mame-arizukamushi]
133. *M. bara* TANABE et NAKANE, 1990

Genus *Takaorites* JEANNEL, 1958

134. *T. torticornis* JEANNEL, 1958  
[Nejirehige-arizukamushi]

- Genus *Bythiotes* NEWTON et CHANDLER, 1989 (Nom. nov. pro *Bythonesiotes* JEANNEL, 1958.)
135. *B. coiffaiti* (JEANNEL, 1958) [Akiyoshi-ohzu-arizukamushi]
136. *B. longicornis* (JEANNEL, 1958) [Higenaga-hirozu-arizukamushi]
- Genus *Nipponobythus* JEANNEL, 1958
137. *N. plagiatus* JEANNEL, 1958 [Saruta-hirozu-arizukamushi]
138. *N. syrbatoides* JEANNEL, 1958 [Mori-ohzu-arizukamushi]
139. *N. latifrons* JEANNEL, 1958 [Ohzu-arizukamushi]
140. *N. omissus* LÖBL, 1965 [Unzen-ohzu-arizukamushi]
141. *N. expectatus* LÖBL, 1965
- Genus *Triomicrus* SHARP, 1883
142. *T. simplex* SHARP, 1883 [Tsuya-marumune-arizukamushi]
143. *T. sublaevis* RAFFRAY, 1909 [Sube-marumune-arizukamushi]
144. *T. protervus* (SHARP, 1874) [Marumune-arizukamushi]  
(=*T. galloisi* JEANNEL, 1958, syn. nov.)
145. *T. hamifer* LÖBL, KURBATOV et NOMURA, 1998 [Koza-marumune-arizukamushi]
146. *T. melini* LÖBL, KURBATOV et NOMURA, 1998 [Okinawa-marumune-arizukamushi]
147. *T. sternalis* LÖBL, KURBATOV et NOMURA, 1998 [Togari-marumune-arizukamushi]
- Tribe Brachyglutini  
Subtribe Brachyglutina  
Genus *Prosthecarthron* RAFFRAY, 1914
148. *P. sauteri* RAFFRAY, 1914 [Ashibe-arizukamushi] (= *Barbiera parpalis* (LÖBL, 1974))
- Genus *Thalassomerus* K. SAWADA, 1992
149. *T. reikoeae* K. SAWADA, 1992
150. *T. miyakei* K. SAWADA, 1992
- Genus *Halohermatus* K. SAWADA, 1991
151. *H. regulus* K. SAWADA, 1991
- Genus *Batraxis* REITTER, 1881
152. *B. splendida* NOMURA, 1986 [Tsuya-atokiri-arizukamushi]
- Genus *Trissemus* JEANNEL, 1949
153. *T. (Trissemus) alienus* (SHARP, 1874) [Nami-enma-arizukamushi]
154. *T. (Tmus.) pseudalienus* KURBATOV, 1990
155. *T. (Tmus.) cubitus* (SHARP, 1874) [Hiro-enma-arizukamushi]
156. *T. (Trissemites) galloisi* JEANNEL, 1958
157. *T. (Trissemellus) mundus* (SHARP, 1874) [Futafushi-enma-arizukamushi]
158. *T. (Tmellus.) diffinis* (SHARP, 1883) [Futo-enma-arizukamushi]
159. *T. (Tmellus.) curtus* (SHARP, 1874) [Higebuto-enma-arizukamushi]  
(=*T. (Tmellus.) antilope* (RAFFRAY, 1909), syn. nov.)
160. *T. (Tmellus.) clavatus* (MOTSCHULSKY, 1851)

161. *T. (Tmellus.) implicitus* (RAFFRAY, 1912) [Taiwan-higebuto-enma-arizukamushi]  
 162. *T. (?) crassipes* (SHARP, 1874)  
 163. *T. (?) grandicollis* JEANNEL, 1958, comb. nov. [Ryûgadô-enma-arizukamushi]

Genus *Reichenbachia* LEACH, 1826

164. *R. pulla* (SHARP, 1883)

Genus *Rybaxis* SAULCY, 1876

165. *R. princeps* (SHARP, 1874) [Daikoku-arizukamushi]  
 166. *R. infuscata* RAFFRAY, 1909 [Hime-daikoku-arizukamushi]  
 167. *R. nigrescens* JEANNEL, 1958  
 168. *R. lamellifera* LÖBL, 1973

Genus *Noduliceps* JEANNEL, 1858

169. *N. latifrons* (SHARP, 1883) [Yebisu-arizukamushi]

## Tribe Bythinini

## Subtribe Bythinina

Genus *Bryaxis* KUGELANN, 1794

170. *B. harmandi* RAFFRAY, 1909 [Harmand-onohige-arizukamushi]  
 171. *B. frontalis* JEANNEL, 1958 [Naga-onohige-arizukamushi]  
 172. *B. coiffaiti* JEANNEL, 1958 [Coiffait-onohige-arizukamushi]  
 173. *B. reversus* (SHARP, 1883) [Mifushi-onohige-arizukamushi]  
 174. *B. extremalis* KURBATOV, 1990 [Chishima-onohige-arizukamushi]  
 175. *B. gracilipalpis* JEANNEL, 1958 [Tosa-onohige-arizukamushi]  
 176. *B. japonicus* (SHARP, 1874) [Yamato-onohige-arizukamushi]  
 177. *B. humilis* RAFFRAY, 1909 [Ekubo-onohige-arizukamushi]  
 (= *B. brevipalpis* JEANNEL, 1958)  
 178. *B. sauteri* RAFFRAY, 1909 [Sauter-onohige-arizukamushi]  
 179. *B. sparsepunctatus* JEANNEL, 1958 [Kobu-onohige-arizukamushi]  
 180. *B. affinis* (SHARP, 1883) [Nebuto-onohige-arizukamushi]  
 181. *B. trichosus* JEANNEL, 1958 [Kebuka-onohige-arizukamushi]  
 182. *B. koltzei* (REITTER, 1887) [Usurii-onohige-arizukamushi]  
 (= *B. kintaro kintaro* NOMURA, 1995)  
 (= *B. kintaro odoiensis* NOMURA, 1995)  
 183. *B. heian* LÖBL, KURBATOV et NOMURA, 1998 [Heian-onohige-arizukamushi]  
 184. *B. kofun* LÖBL, KURBATOV et NOMURA, 1998 [Kofun-onohige-arizukamushi]  
 185. *B. jomon* LÖBL, KURBATOV et NOMURA, 1998 [Johmon-onohige-arizukamushi]  
 186. *B. kamakura* LÖBL, KURBATOV et NOMURA, 1998 [Kamakura-onohige-arizukamushi]  
 187. *B. platalea* LÖBL, KURBATOV et NOMURA, 1998 [Hera-onohige-arizukamushi]  
 188. *B. sawadai* LÖBL, KURBATOV et NOMURA, 1998 [Sawada-onohige-arizukamushi]  
 189. *B. peckorum* LÖBL, KURBATOV et NOMURA, 1998 [Peck-onohige-arizukamushi]  
 190. *B. samurai* LÖBL, KURBATOV et NOMURA, 1998 [Samurai-onohige-arizukamushi]  
 191. *B. katana* LÖBL, KURBATOV et NOMURA, 1998 [Katana-onohige-arizukamushi]

192. *B. hoko* LÖBL, KURBATOV et NOMURA, 1998  
[Hoko-onohige-arizukamushi]
194. *B. tanto* LÖBL, KURBATOV et NOMURA, 1998  
[Tantô-onohige-arizukamushi]
196. *B. yari* LÖBL, KURBATOV et NOMURA, 1998  
[Yari-onohige-arizukamushi]
198. *B. hisamatsui* LÖBL, KURBATOV et NOMURA, 1998  
[Hisamatsu-onohige-arizukamushi]
200. *B. bushido* LÖBL, KURBATOV et NOMURA, 1998  
[Bushidô-onohige-arizukamushi]
202. *B. tetralobus* LÖBL, KURBATOV et NOMURA, 1998  
[Kaku-onohige-arizukamushi]
204. *B. subseriatus* (WEISE, 1877)

## Subtribe Machaeritina

Genus *Tychobythinus* GANGLBAUER, 1896

205. *T. aino* KURBATOV, 1992  
[Aino-oni-onohige-arizukamushi]
206. *T. japonicus* LÖBL et KURBATOV, 1996

Genus *Bythoxenites* JEANNEL, 1958

207. *B. japonicus* (NOMURA et YOSHIDA, 1952)  
[Horaana-arizukamushi]
209. *B. major* TANOKUCHI, 1990
211. *B. longicornis* LÖBL et KURBATOV, 1996
213. *B. torticornis* LÖBL et KURBATOV, 1996
215. *B. pubiceps* LÖBL et KURBATOV, 1996
217. *B. frontalis* LÖBL et KURBATOV, 1996
208. *B. sulcithorax* TANOKUCHI, 1990  
(=*B. diversicornis* LÖBL et KURBATOV, 1996)
210. *B. rimicola* TANOKUCHI, 1990
212. *B. brevicornis* LÖBL et KURBATOV, 1996
214. *B. brevipilis* LÖBL et KURBATOV, 1996  
[Kyoto-kamahige-arizukamushi]
216. *B. longiceps* LÖBL et KURBATOV, 1996

## Tribe Tychini

Genus *Tainochus* KURBATOV, 1992

218. *T. imperator* KURBATOV, 1992  
[Chishima-mukuge-arizukamushi]
220. *T. insulicola* (NOMURA et LEE, 1992)  
[Shima-mukuge-arizukamushi]
222. *T. puncticeps* NOMURA, 1996  
[Kyushu-mukuge-arizukamushi]
219. *T. iwaoi* NOMURA, 1996  
[Okamoto-mukuge-arizukamushi]
221. *T. nitidus* NOMURA, 1996  
[Tsuya-mukuge-arizukamushi]
223. *T. minutus* NOMURA, 1996  
[Shikoku-mukuge-arizukamushi]

Genus *Tychus* LEACH, 1817

224. *T. crassicornis* RAFFRAY, 1909  
[Mori-arizukamushi]
225. *T. dichotomus* NOMURA et LEE, 1992  
[Tairiku-mori-arizukamushi]



226. *T. yukihikoi* NOMURA, 1996  
[Hirano-mori-arizukamushi]
- Genus *Hyugatychus* NOMURA, 1996
228. *H. teizonagatomo* NOMURA, 1996  
[Hyuga-mori-arizukamushi]
227. *T. yezoensis* NOMURA, 1996  
[Ezo-mori-arizukamushi]
229. *H. tokunoshimensis* NOMURA, 1996  
[Tokunoshima-mori-arizukamushi]
- Supertribe Pselaphitae  
Tribe Cyathigerini  
Genus *Paracyathiger* JEANNEL, 1951
230. *P. fujiyamai* (KUBOTA, 1943)  
[Fujiyama-daruma-arizukamushi]
231. *P. matousheki* LÖBL, 1964  
[Yaeyama-daruma-arizukamushi]
- Tribe Hybocephalini  
Genus *Apharinodes* RAFFRAY, 1890
232. *A. papageno* NOMURA, 1989 [Oh-uroko-arizukamushi]
- Genus *Stipesa* SHARP, 1874
233. *S. rudis* SHARP, 1874 [Hanadaka-arizukamushi]
- Tribe Pselaphini  
Genus *Pselaphogenius* REITTER, 1910
234. *P. debilis* (SHARP, 1883)  
[Arame-higenaga-arizukamushi]
236. *P. gotoinsularis* NOMURA, 1998  
[Gotô-higenaga-arizukamushi]
238. *P. seihiensis* NOMURA, 1999  
[Seihi-higenaga-arizukamushi]
240. *P. shimabaranus* NOMURA, 1999  
[Shimabara-higenaga-arizukamushi]
242. *P. paradoxus* (K. SAWADA, 1969)  
[Saigoku-higenaga-arizukamushi]
- 242 a. *P. p. magniocularis*  
(K. SAWADA, 1971)
- 242 b. *P. p. iyonis* NOMURA, 2000
- 242 c. *P. p. chiyokoae* NOMURA, 2000
244. *P. spinifer* (K. SAWADA, 1969)
- 244 a. *P. s. tuberculipenis*  
(K. SAWADA, 1969)
246. *P. tubipenis* (K. SAWADA, 1969)  
[Tsushima-higenaga-arizukamushi]
248. *P. yoshidai* (K. SAWADA, 1968)  
[Yoshida-higenaga-arizukamushi]
235. *P. dentipenis* (K. SAWADA, 1969)
237. *P. patrius* NOMURA, 1999  
[Matsuura-higenaga-arizukamushi]
239. *P.shintaro* NOMURA, 1999  
[Taradake-higenaga-arizukamushi]
241. *P. orientalis* (BESUCHET, 1961)
243. *P. shibatai* (K. SAWADA, 1969)  
[Shibata-higenaga-arizukamushi]
245. *P. tridentatus* (K. SAWADA, 1969)
- 245 a. *P. t. vicinus* (K. SAWADA, 1969)
247. *P. uncifer* (TANOKUCHI, 1981)  
[Kagi-higenaga-arizukamushi]
249. *P. yosii* (K. SAWADA, 1969)
- 249 a. *P. y. hamatus* (K. SAWADA, 1969)
- 249 b. *P. y. securiger* (K. SAWADA, 1969)

250. *P. lanceolatus* (K. SAWADA, 1969)  
[Amami-higenaga-arizukamushi]

Genus *Pselaphaulax* REITTER, 1909

251. *P. japonicus* (RAFFRAY, 1909) [Yamato-arizukamushi]

Genus *Pselaphus* HERBST, 1792

252. *P. lewisi* SHARP, 1883

Genus *Tyraphus* SHARP, 1874

253. *T. nitidus* RAFFRAY, 1909

Genus *Hirashimanymus* NOMURA, 1990

254. *H. schistodactyloides* NOMURA, 1990 [Kagiashi-arizukamushi]

Tribe Ctenistini

Genus *Centrotoma* HEYDEN, 1849

255. *C. prodiga* SHARP, 1874 [Kuro-juzuhige-arizukamushi]

Genus *Ctenistes* REICHENBACH, 1816

256. *C. oculatus* SHARP, 1883 [Kushihige-arizukamushi]

Genus *Pilopius* CASEY, 1897

257. *P. discedens* (SHARP, 1883) [Hoso-kushihige-arizukamushi]

Genus *Poroderopsis* JEANNEL, 1960

258. *P. mimeticus* (SHARP, 1883)

Genus *Poroderus* SHARP, 1883

259. *P. medius* (SHARP, 1874)  
[Kushihige-tsuya-arizukamushi]

260. *P. armatus* (SHARP, 1874)  
[Kagi-kuchihige-arizukamushi]

261. *P. similis* (SHARP, 1874)  
[Susuki-kushihige-arizukamushi]

Genus *Sognorus* REITTER, 1881

262. *S. breviceps* (SHARP, 1883)

Tribe Tmesiphorini

Genus *Raphitreus* SHARP, 1883

263. *R. speratus* (SHARP, 1874) [Higebuto-ekubo-arizukamushi]

Genus *Tmesiphorus* LECONTE, 1849

264. *T. crassicornis* SHARP, 1883  
[Higekata-arizukamushi]

265. *T. princeps* SHARP, 1883

266. *T. costatus* WEISE, 1877

## Tribe Tyrini

## Subtribe Tyrina

Genus *Labomimus* SHARP, 1883

267. *L. reitteri* SHARP, 1883  
[Ashinaga-arizukamushi]
268. *L. shibatai* K. SAWADA, 1961  
[Oh-ashinaga-arizukamushi]

Genus *Lasinus* SHARP, 1874

269. *L. spinosus* SHARP, 1874  
[Ohtoge-arizukamushi]
270. *L. monticola* K. SAWADA, 1961  
[Yama-ohtoge-arizukamushi]

Genus *Saltisedes* KUBOTA, 1944

271. *S. brunneus* KUBOTA, 1944 [Sedaka-arizukamushi]

Genus *Tyrus* AUBÉ, 1833

272. *T. japonicus* SHARP, 1883

## Supertribe Clavigeritae

## Tribe Clavigerini

Genus *Diaartiger* SHARP, 1883

273. *D. fossulatus* SHARP, 1883  
[Ko-yamato-higebuto-arizukamushi]
- 273 a. *D. f. izuinsulicola* NOMURA, 1997
- 273 b. *D. f. ispartae* (KARAMAN, 1969)
- 273 c. *D. f. morimotoi* NOMURA, 1997
- 273 d. *D. f. imasakai* NOMURA, 1997
- 273 e. *D. f. hirashimai* NOMURA, 1997
- 273 f. *D. f. dentipes* NOMURA et LEE, 1992
274. *D. spinipes* SHARP, 1883  
[Yamato-higebuto-arizukamushi]
275. *D. kubotai* NOMURA, 1997  
[Kubota-yamato-higebuto-arizukamushi]
276. *D. japonicus* (K. SAWADA, 1963)  
[Hime-higebuto-arizukamushi]

Genus *Triartiger* KUBOTA, 1944

277. *T. reductus* NOMURA, 1997 [Tsushima-mifushi-higebuto-arizukamushi]

Genus *Micrelytriger* NOMURA, 1997

278. *M. mirabilis* NOMURA, 1997  
[Kobane-higebuto-arizukamushi]
279. *M. nakatai* NOMURA, 1997  
[Okinawa-kobane-higebuto-arizukamushi]

## Acknowledgement

I wish to express my sincere thanks to Dr. Shun-Ichi UENO for his kind assistance and critical reading of the manuscript. My special thanks are due to Dr. Martin J. D. BRENDLELL (BMNH) and Dr. Nicole BERTI (MHNP) for their kind support for reexamination of the type material. I am also much indebted to Dr. Kôhei SAWADA in Takatsuki

City, Osaka Pref., for his kind advice and permission for examination and dissection of the holotype of *Phthartomerus nanus*.

## 要 約

野村周平：日本産アリヅカムシに関する分類学的整理と種のリスト。——日本からは従来288種、20亜種のアリヅカムシが知られている。筆者は2000年2月、ロンドンのNatural History Museum (BMNH), ならびにパリのMuseum National d'Histoire Naturelle (MHNP)に所蔵される111種の日本産アリヅカムシのタイプ標本を検した。その結果、9つのシノニムと2つの新結合名が見出されたので報告した。さらに1種のタイプ指定について検討した結果を記した。

また、SAWADA (1956)がFaroniniの新属新種として記載した*Phthartomerus nanus*のホロタイプ標本を借りて検討したところ、*Euplectus*属の1種とすべきことが判明した。しかし種名*nanus*を*Euplectus*と結合すると二次ホモニムとなるため、新名*Euplectus sawadaianus* (サワダナガアリヅカムシ)を提唱した。本種は*Euplectus*属のタイプ種*E. reichenbachii* LEACHに類似するが、頸部孔点がないなどの特徴で区別できる。*Euplectus*属には5つの亜属が認められているが、これらの分類はあいまいであるため、本種は暫定的に原名亜属に分類しておく。

以上の結果、日本産アリヅカムシは279種、20亜種となる。これら全種のリストを公表した。

## References

- BESUCHET, C., 1985. Le genre *Acetalius* SHARP (Coleoptera: Pselaphidae). *Revue suisse Zool.*, **92**: 761–766.
- JEANNEL, R., 1958. Révision des Psélaphides du Japon. *Mém. Mus. Hist. nat., Paris*, (A), **18**: 1–138.
- 1959. Un Psélaphide nouveau du Japon. *Revue fr. Ent.*, **26**: 16–18.
- 1960. Sur les Psélaphides (Coleoptera) de l'Inde septentrionale. *Bull. Brit. Mus. (nat. Hist)*, Ent., **9**: 403–456.
- LÖBL, I., S. A. KURBATOV & S. NOMURA, 1998 a. A revision of the genus *Triomicrus* SHARP (Coleoptera, Staphylinidae, Pselaphinae). *Bull. natn. Sci. Mus., Tokyo*, (A), **24**: 69–105.
- , —— & —— 1998 b. On the Japanese species of *Bryaxis* (Coleoptera: Staphylinidae: Pselaphinae), with notes on allied genera and on endoskeletal polymorphy. *Spec. Divers., Sapporo*, **3**: 219–269.
- NEWTON, A. F., & D. S. CHANDLER, 1989. World catalog of the genera of Pselaphidae (Coleoptera). *Fieldiana, Zool.*, (N. S.), (53): 1–93.
- NOMURA, S., 1988 a. A revision of the subtribe Acetaliina (Coleoptera, Pselaphidae) from Japan, part I. *Kontyû, Tokyo*, **56**: 251–260.
- 1988 b. A revision of the subtribe Acetaliina (Coleoptera, Pselaphidae) from Japan, part III. *Ibid.*, **56**: 739–751.
- 1989. Pselaphidae. In HIRASHIMA, Y. (ed.), *Check List Jpn. Ins., Fukuoka*, [**1**]: 287–293. (In Japanese.)
- 1991. Systematic study on the genus *Batrisoplisus* and its allied genera from Japan (Coleoptera, Pselaphidae). *Esakia, Fukuoka*, (30): 1–462.
- PARK, O., 1948 a. Checklist of the genus *Batrisodes* (Coleoptera: Pselaphidae). *Bull. Chicago Acad. Sci.*, **8**: 137–169.
- 1948 b. Studies in Japanese Pselaphidae (Coleoptera), I. Introductory materials, checklist, and

- key to genera. *Bull. Chicago Acad. Sci.*, **8**: 203–221.
- RAFFRAY, A., 1904. Genera et catalogue des Psélaphides. *Annls. Soc. ent. Fr.*, **73**: 401–476.
- 1908. Coleoptera. Fam. Pselaphidae. In WYTSMANN, P. (ed.), *Genera Ins.*, (64): 487 pp.
- 1909. Nouvelles espèces de Psélaphides. *Annls. Soc. ent. Fr.*, **78**: 15–52.
- 1911. Pselaphidae. In JUNK, W., & S. SCHENKLING (ed.), *Coleopterorum Catalogus*, pars 27 (222 pp.). Berlin.
- SAWADA, K., 1956. Neue Pselaphinen von Japan (Coleoptera: Pselaphidae). *Akitsu, Kyoto*, **5**: 101–103.
- SHARP, D., 1874. The Pselaphidae and Scydmaenidae of Japan. *Trans. ent. Soc. London*, **1874**: 105–130.
- 1883. Revision of the Pselaphidae of Japan. *Ibid.*, **1883**: 291–331.
- TANABE, T., & T. NAKANE, 1989. Three new species of the genus *Batrisodellus* (Coleoptera, Pselaphidae) from Japan. *Kontyû, Tokyo*, **57**: 734–741.

---

*Elytra, Tokyo*, **29** (1): 161–162, June 15, 2001

## Additional Localities of *Agathidium (Neoceble) akemiae* (Coleoptera, Leiodidae) from Honshu, Japan

**Hideto HOSHINA**

Department of Soil Zoology, Institute of Environmental Science and Technology,  
Yokohama National University, Yokohama, 240–8501 Japan<sup>1)</sup>

*Agathidium (Neoceble) akemiae* was described by FUJIMORI (1998) from Shikoku, Japan, based on one male specimen. Later, HIRANO (1999) recorded this species for the first time from Honshu, based on one male specimen. However, HOSHINA (1999) designated this specimen used by HIRANO (1999) as a paratype of *Agathidium (Neoceble) multitodum*. As the result, no distributional records of *A. (N.) akemiae* have been known except for Shikoku. Recently, I found one male specimen of *A. (N.) akemiae* collected from Honshu, and am going to record this species in the present report. Before going further, I wish to express my sincere gratitude to Professor Jun-ichi AOKI (Yokohama National University) and Mr. Yukihiro HIRANO (Kanagawa Pref.) for their continuous guidance. I also thank Drs. Nobuo OHBAYASHI and Masahiro SAKAI (Ehime University) and Mr. Takeshi FUJIMORI (Tokyo Pref.) who gave me an opportunity to examine the holotype. Heartly thanks are also due to Mr. Masataka YOSHIDA (Tokushima Pref.) for his loaning the specimen used in the present report.

---

1) Present address: Department of Regional Environment, Faculty of Education and Regional Studies, Fukui University, Fukui, 910–8507 Japan.