

New Record of the Genus and Species, *Cyrtusa antennaria* DAFFNER (Coleoptera, Leiodidae) in Korea

Hideto HOSHINA¹⁾, Sun-Jae PARK²⁾ and Kee-Jeong AHN³⁾

¹⁾ Department of Regional Environment, Faculty of Education and Regional Studies,
Fukui University, Fukui, 910–8507 Japan

^{2, 3)} Department of Biology, Chungnam National University,
Daejeon City, 305–764 Republic of Korea

The genus *Cyrtusa* belonging to the tribe Leiodini of the family Leiodidae was described by ERICHSON (1842). In Korea, only two species of the tribe Leiodini (*Leiodes obesa* (SCHMIDT, 1841) and *Zeadolopus chaoticus* DAFFNER, 1983) have been known to occur.

In 1999–2001, we collected many leiodid beetles by flight intercept traps in Korea and obtained *Cyrtusa* specimens. After careful examinations, we identified them with *C. antennaria* DAFFNER, 1989, which had been known to be distributed in only Shikoku, Japan (DAFFNER, 1989; HOSHINA, 1998). In this report, we record the genus *Cyrtusa* for the first time from Korea.

We are very grateful to Prof. Stewart B. PECK (Carleton University, Canada) who kindly loaned us a paratype of *Cyrtusa antennaria*.

Cyrtusa antennaria DAFFNER, 1989

Cyrtusa antennaria DAFFNER, 1989, 26 (Japan: Shikoku). — HOSHINA, 1998, 4.

Distribution. Korea and Japan (Shikoku).

Specimens examined. Paratype: 1 ♀, Omogo Valley, Omogo Village, Ehime Pref., 25–VIII–1980, J. & S. PECK leg. (preserved in the collection of Carleton University, Canada). General specimens (all collected by flight intercept traps in Korea): 1 ♂, Baektansa Area, Mt. Taebaeksan, Taebaek City, Kangwon Prov., 14–VII–1999, U.-S. HWANG & H.-J. KIM leg.; 2 ♀♀, Jangoska Area, Mt. Chilgapsan, Cheongyang-gun, Chungnam Prov., 3~14–VI–2000, K.-H. JUNG, M.-J. LEE & J.-H. SONG leg.; 1 specimen, Jangoska Area, Mt. Chilgapsan, Cheongyang-gun, Chungnam Prov., 23–VI~13–VII–2000, K.-H. KO & M.-J. LEE leg.; 1 specimen, Gapsa, Mt. Gyeryongsan, Gyeryong-myeon, Gongju City, Chungnam Prov., 3~14–VI–2000, S.-J. PARK & M.-S. KIM leg.; 1 ♂, Woosan-bong, Mt. Gyeryongsan, Banpo-myeon, Gongju City, Chungnam Prov., 10~24–VII–2000, S.-J. PARK & M.-S. KIM leg.; 3 specimens, Genmseon Valley, Naejangsa Area, Mt. Naejangsan, Jeongeub City, Jeonbuk Prov., 15~24–VI–2000, U.-S. HWANG & H.-J. KIM leg.; 2 ♂♂, 2 ♀♀, Waljeongsa, Mt. Odaesan, Gangwon Prov., 22–VIII~20–X–2000, K.-J. AHN & U.-S. HWANG leg.; 2 ♂♂, 1 ♀, Mt. Baekdeoksan, Bangrim-myeon, Pyeongchang-gun, Gangwon Prov., 12–VII~16–VIII–2001, K.-J. AHN, S.-J. PARK & C.-W. SHIN leg.

Remarks. The biology of the genus *Cyrtusa* is unknown, but it is possible that they inhabit the litter layers or grounds of forest, because they are often collected by using Tullgren funnels and flight intercept traps.

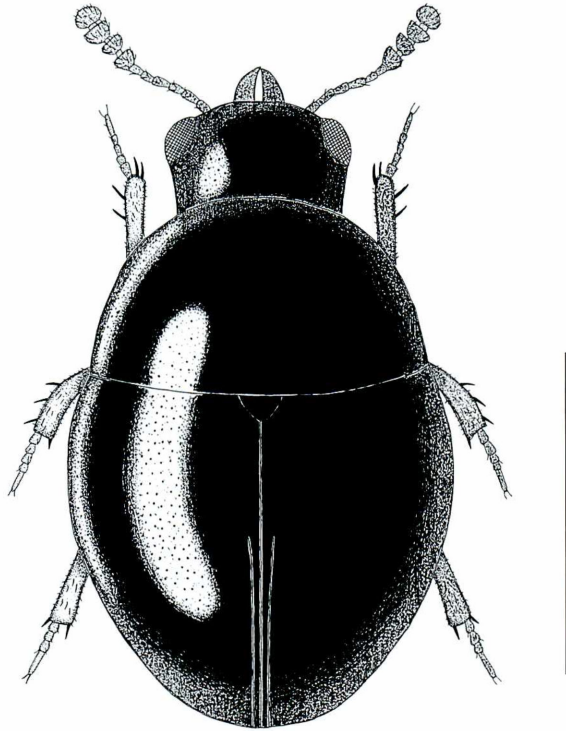


Fig. 1. *Cyrtusa antennaria* DAFFNER. Scale: 1.0 mm.

References

- DAFFNER, H., 1983. Revision der paläarktischen Arten der Tribus Leiodini LEACH (Coleoptera, Leiodidae). *Folia ent. hung.*, **44**: 9–163.
- 1989. Vier neue Arten der *Cyrtusa*-Verwandtschaft aus Thailand und Japan (Coleoptera, Leiodidae, Leiodini). *Acta coleopterol., München*, **5**: 21–27.
- ERICHSON, W. F., 1842. Bericht über die Leistungen in der Naturgeschichte der Insekten, Arachniden, Crustaceen und Entomostraceen während des Jahres 1841. *Arch. Naturg.*, **8**: 189–330.
- HOSHINA, H., 1998. Systematic study on Japanese species of the genus *Cyrtusa* (Coleoptera: Leiodidae). *Ent. Rev. Japan*, **53**: 1–7.