

亜属の1種 *Donacia* (*Donaciomima*) sp. と同定された。アキミズクサハムシは現在、広島県芸北町のみから知られているが、本化石記録は本種の後期鮮新世の分布を考察するうえで重要な発見である。古琵琶湖層群には多くの亜炭層が挟まれており、今後の調査で新たな化石の発見が期待される。

References

- Fossil Insect Research Group for Nojiri-ko Excavation & S. AKAGI, 1986. Late Miocene to Pliocene insect fossils from the Hogi Lignite Formation of Ketaka-cho, Tottori Prefecture, Japan (1). *Bull. Osaka Mus. nat. Hist.*, (40): 31–58, pls. 5–6. (In Japanese, with English abstract.)
- KAWABE, T., 1989. Stratigraphy of the lower part of the Kobiwako Group around the Ueno basin, Kinki district, Japan. *J. Geosci. Osaka City Univ.*, **32**: 39–52.
- 1990. The Kobiwako Group: in and around Ueno basin. *Urban Kubota*, (**29**): 30–47. (In Japanese.)
- 1990. Geohistory of Lake Biwa. In: *The Natural History of Lake Biwa*, 25–72. Yasaka Shobo Inc., Tokyo. (In Japanese.)
- SATOGUCHI, Y., Y. NAGASHI, K. KUROKAWA & S. YOSHIKAWA, 1999. Tephrostratigraphy of the Pliocene to Lower Pleistocene formations in central Honshu, Japan. *Earth Sci. (Chikyu Kagaku)*, **53**: 275–290. (In Japanese, with English abstract.)
- Research Group for the Fossil Footprints at the River Yasu, 1998. Fossil footprints at River Yasu, Asakuni, Kosei Town, Shiga Prefecture, Central Japan. 57 pp. Kosei Municipal Board of Education, Kosei. (In Japanese.)
- TOMINAGA, O., & Insect Fossil Research Group, 1993. Fossil Insects obtained from the petrified forest site in the Echi River, Shiga Prefecture. *Res. Rept. Lake Biwa Mus.*, (1): 77–79. (In Japanese.)
- , K. KATSURA, & Fossil Insect Research Group for Nojiri-ko Excavation, 1984. Studies on the Japanese Donaciinae (Coleoptera: Chrysomelidae). 2. Notes on geographical diversity of *Plateumaris constricticollis*, with descriptions of an allied new species. *Bull. Osaka Mus. nat. Hist.*, (37): 25–40, pl. 8. (In Japanese, with English descriptions.)

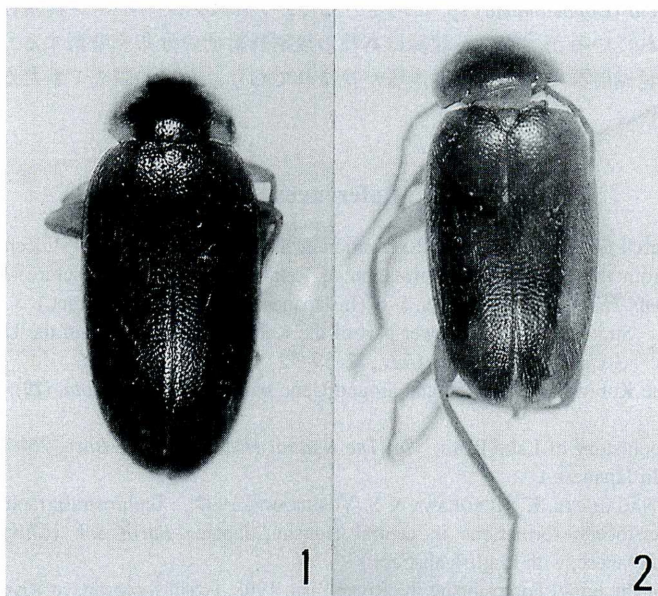
Elytra, Tokyo, **30** (1): 213–214, June 30, 2002

New Record of *Elodes burmensis* (Coleoptera, Scirtidae) from Vietnam and India

Hiroyuki YOSHITOMI

Bioindicator Co., Ltd., (Sapporo branch),
Kita 1, Nishi 2–11, Chûô-ku, Sapporo-shi, 060–0001 Japan

Elodes burmensis KLAUSNITZER was originally described from Myanmar, and has been



Figs. 1–2. *Elodes burmensis* KLAUSNITZER; 1, Vietnamese specimen; 2, Indian specimen.

recorded from Myanmar, Nepal and Thailand (KLAUSNITZER, 1974; YOSHITOMI, 2000). Recently, I had an opportunity to examine two specimens of this species preserved in the collection of the National Science Museum, Tokyo (NSMT). In this brief report, I am going to record them from Vietnam and India for the first time.

Specimens examined. 1 ♂, Deo Tram Ton (LT), Lao Cai Prov., N. Vietnam, 27–VI–1997, S. NOMURA leg.; 1 ♂, Darjeeling, 2,100 m alt., West Bengal, India, 8–IX–1983, M. TOMOKUNI leg.

I thank Dr. S. NOMURA of the NSMT for his permission to examine these specimens.

References

- KLAUSNITZER, B., 1974. Zur Kenntnis der Gattung *Helodes* LATR. (Col., Helodidae). (16. Beitrag zur Kenntnis der Helodidae). *Ent. Nachr., Dresden*, **18**: 17–25.
- YOSHITOMI, H., 2000. Taxonomic notes on the genera *Sacodes* and *Elodes* (Coleoptera, Scirtidae). *Jpn. J. syst. Ent.*, **6**: 79–82.