

けで具体的な報告は一切なかった。ところが、琉球列島石垣島で牛糞に來ている個体を採集することができたので、ここに再記載し、図示した。この種の分布が広いことを考えると、風による南方からの飛來か、牛糞による人為的な移入が考えられる。

References

- D'ORCHYMONT, A., 1937. Contribution à l'étude des Palpicornia, X. *Bull. Annl. Soc. ent. Belg.*, **77**: 457–475.
- HANSEN, M., 1991. The hydrophiloid beetles. Phylogeny, classification and a revision of the genera (Coleoptera, Hydrophiloidea). *Biol. Skr., København*, **40**: 1–367.

Elytra, Tokyo, **30** (2): 429–430, November 22, 2002

New Record of *Xylothrips cathaicus* (Coleoptera, Bostrychidae) from the Tsushima Islands, Japan

Ryûtarô IWATA¹⁾ and Yoshiyasu KUSAKABE²⁾

¹⁾ Forest Zoology Laboratory, Department of Forest Science and Resources,
College of Bioresource Sciences, Nihon University, Fujisawa, 252–8510 Japan

²⁾ 21–12 Sumiregaoka, Tsuzuki-ku, Yokohama, 224–0013 Japan

Xylothrips cathaicus was described by REICHARDT (1966) on 5 ♀♀ from Hebei and Henan Provinces, China, and later CHEN (1990) reported capture of 4 ♂♂, 6 ♀♀ from Beijing and gave a short description of the male.

More than a decade ago, on the Tsushima Islands, Japan, the junior author (Y.K.) took a bostrychid beetle apparently theretofore unknown from Japan. This was obtained by splitting dead branches of *Zelkova serrata* (keyaki), which later yielded 20 beetles of the same species. Meanwhile, the senior author (R.I.) recognized them *X. cathaicus*, a species new to the Japanese fauna.

Xylothrips cathaicus REICHARDT

[New Japanese name: Chûgoku-tsuya-nagashinkui]

Specimens examined. 1 ♂, Mt. Ôboshi, Kami-agata-chô, Tsushima Is., Nagasaki Pref., Japan (taken out from dead branches of *Zelkova serrata*), 2–IV–1990, leg. Yoshiyasu KUSAKABE; 7 ♂♂, 13 ♀♀, the same locality, 2–IV–1990 (dead branches of *Z. serrata*), emerged as adults at

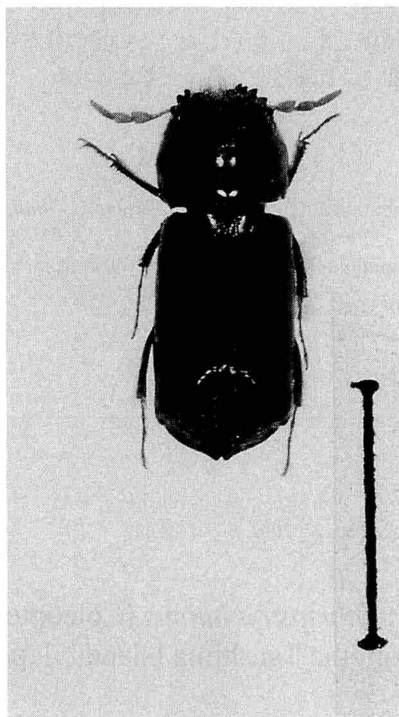


Fig. 1. *Xylothrips cathaicus* REICHARDT, ♀ (scale: 5 mm).

Yokohama, Japan, V~VI-1990, leg. Yoshiyasu KUSAKABE (Fig. 1).

This species is distinguishable from *X. flavipes* (ILLIGER), the sole known representative of the genus in Japan, in that the surface of the posterior declivity of the elytra is not furnished with marked punctures, while in *X. flavipes* marked punctures are present on it.

It is quite interesting that a species hitherto known only from the continent was discovered from the Tsushima Islands, situated between Japan and the Korean Peninsula. Occurrence of the species in the Korean Peninsula is therefore strongly suggested.

Acknowledgments

We thank Mr. ZHU Hongbin, Beijing, for his providing us with Chinese *X. cathaicus* specimens for comparison.

References

- CHEN, S., 1990. Note on male of *Xylothrips cathaicus* REICHARDT (Coleoptera: Bostrychidae). *Acta zootax. sin.*, **15**: 255. (In Chinese with English title.)
REICHARDT, H., 1966. Bostrychidae (Coleoptera) 7: a new *Xylothrips* from China. *Coleopt. Bull.*, **20**: 81-83.