

Termitariophilous Lamellicorn Beetle, *Madrasostes kazumai*
(Coleoptera, Ceratocanthidae), Collected from a Nest of
Hodotermopsis sjoestedti (Isoptera, Termopsidae)

Munetoshi MARUYAMA¹⁾ and Ryûtarô IWATA²⁾

¹⁾ Systematic Entomology, Graduate School of Agriculture,
Hokkaido University, Sapporo, 060–8589 Japan.

²⁾ Department of Forest Science and Resources, College of Bioresource Sciences,
Nihon University, 1866 Kameino, Fujisawa, Kanagawa, 252–8510 Japan.

Madrasostes kazumai OCHI, JOHKI et NAKATA, 1990, was originally described from the Island of Naka-no-shima, Tokara-rettô, south of Kyushu. IMASAKA (1997) recorded this species from Sata-misaki, a cape located at the southern edge of mainland Kyushu. On the other hand, HAMADA (1996) and some others recorded *Madrasostes* sp. from the island groups of Amami-shotô and Okinawa-shotô of the Ryukyus, where its association with termites was not referred to, and later these records were all assigned to *M. kazumai* (FUJIOKA, 2001). IWATA *et al.* (1992) reported the bionomics of this species, and concluded that it is a termitariophile associated with *Coptotermes formosanus* SHIRAKI, 1905 (Isoptera, Rhinotermitidae). Recently, however, the first author collected *M. kazumai* adults from a nest of another termite species, *Hodotermopsis sjoestedti* HOLMGREN, 1911. They were obtained from a sample of clay-like rotten wood substance from the abandoned part of a nest of *H. sjoestedti*, from which all the beetles living inside it were extracted by Tullgren funnels. The collecting site is near the top of the island and the host termites nested in a standing dead tree of *Quercus* sp.

This is a new host record for the lamellicorn beetle. The detailed collecting data is given below.

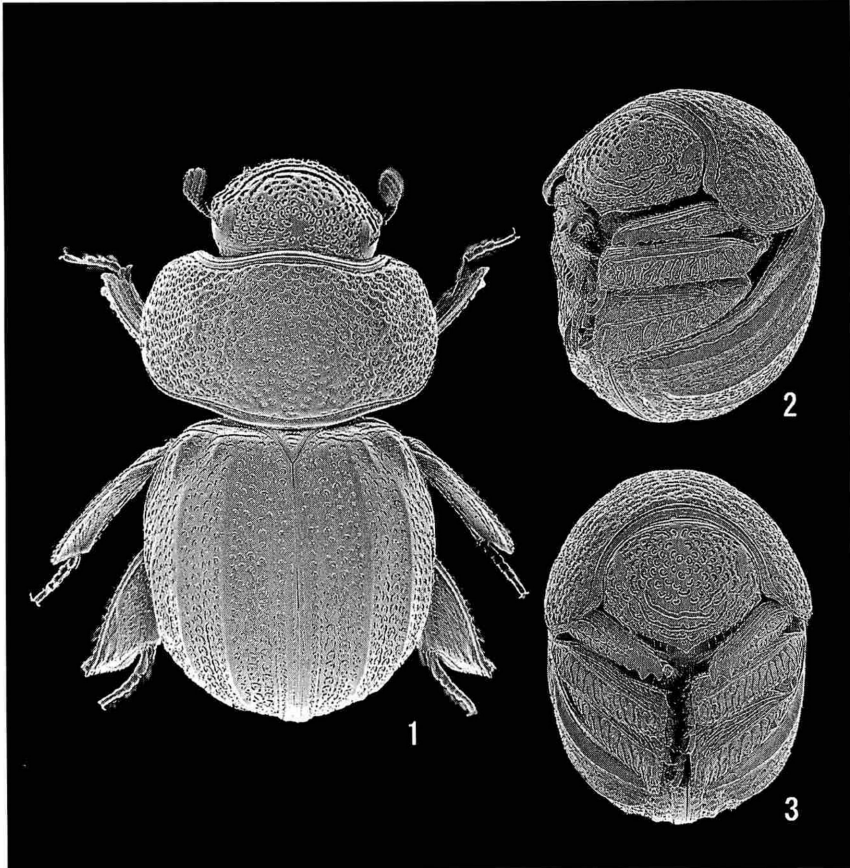
IWATA *et al.* (1992) specified the present lamellicorn species as a possible obligatory termitariophile associated with *Coptotermes formosanus*. However, the present record clearly contradicts this, suggesting the necessity of further studies on the association of this lamellicorn with termites.

The senior author thanks Mr. Masaaki FUJIOKA (Tokyo) for his kind advice for collecting, Dr. Hideto HOSHINA (Fukui University) for his sorting of beetles extracted by Tullgren funnels, and Mr. Hiroshi SUGAYA (Hokkaido University) for his taking SEM photographs.

***Madrasostes kazumai* OCHI, JOHKI et NAKATA, 1990**

Madrasostes kazumai OCHI, JOHKI et NAKATA, 1990, 31–33.

Material examined. 9 exs., O-take, Naka-no-shima, Tokara-rettô, Toshima-mura, Kago-shima-ken, Japan, 20–X–2000, M. MARUYAMA leg., from a nest of *H. sjoestedti* (collections of the authors and Mr. M. FUJIOKA).



Figs. 1–3. *Madrasostes kazumai* OCHI, JOHKI et NAKATA; 1, habitus; 2, ball-up posture, ventro-lateral view; 3, ditto, ventral view.

References

- FUJIOKA, M., 2001. A list of Japanese Lamellicornia. *Kogane, Tokyo*, (Suppl. 1): 1–293.
- HAMADA, J., 1996. *Madrasostes* sp. collected at the northern part of Okinawa Island. *Gekkan-Mushi, Tokyo*, (310): 27.
- IMASAKA, S., 1997. *Madrasostes* sp. from Sata-misaki. *Gekkan-Mushi, Tokyo*, (314): 24–25.
- IWATA, R., K. ARAYA & Y. JOHKI, 1992. The community of arthropods with spherical postures, including *Madrasostes kazumai* (Coleoptera, Ceratocanthidae), found from the abandoned part of a nest of *Coptotermes formosanus* (Isoptera, Rhinotermitidae) in Tokara-Nakanoshima Island, Japan. *Sociobiology, Chico*, **20**: 233–244.
- OCHI, T., Y. JOHKI & T. NAKATA, 1990. A new myrmecophilous lamellicorn beetle (Coleoptera, Ceratocanthidae) from Japan. *Jpn. J. Ent.*, **58**: 31–34.