

A New *Donacia* from Laos, with New Record of *Sominella longicornis*  
(JACOBY) (Coleoptera, Chrysomelidae, Donaciinae)

**Masakazu HAYASHI**

Hoshizaki Green Foundation, 1659–5 Okinoshima, Sono-cho, Hirata, 691–0076 Japan

**Abstract** Two new records of the Donaciinae (Coleoptera, Chrysomelidae) are reported from Laos. A new donaciine species, *Donacia* (*Donaciomima*) *yoshitomi* sp. nov., is described. It resembles *Donacia* (*Donaciomima*) *impressa* PAYKULL from the western Palearctic Region but endophallus is useful their identification. *Sominella longicornis* (JACOBY) is recorded for the first time from Laos.

The donaciine fauna of Laos is poorly known, only one species, *Donacia* (*Cyphogaster*) *javana* WIEDEMANN, having been recorded by KIMOTO and GRESSITT (1979). In 2002, Dr. Hiroyuki YOSHITOMI, Dr. Masataka SATÔ and Dr. Nobuo OHBAYASHI visited Laos, and they collected two species of the Donaciinae at Phu Pan, Houaphan Province. One of them, belonging to the genus *Donacia*, is recognized as a new species based on its endophallic features. The other species is identified with *Sominella longicornis* (JACOBY) previously known from South China. It is recorded for the first time from Laos.

I gratefully acknowledge to Dr. Hiroyuki YOSHITOMI, Dr. Masataka SATÔ, Dr. Nobuo OHBAYASHI and Dr. Tatsuya NIISATO, who provided me with valuable materials.

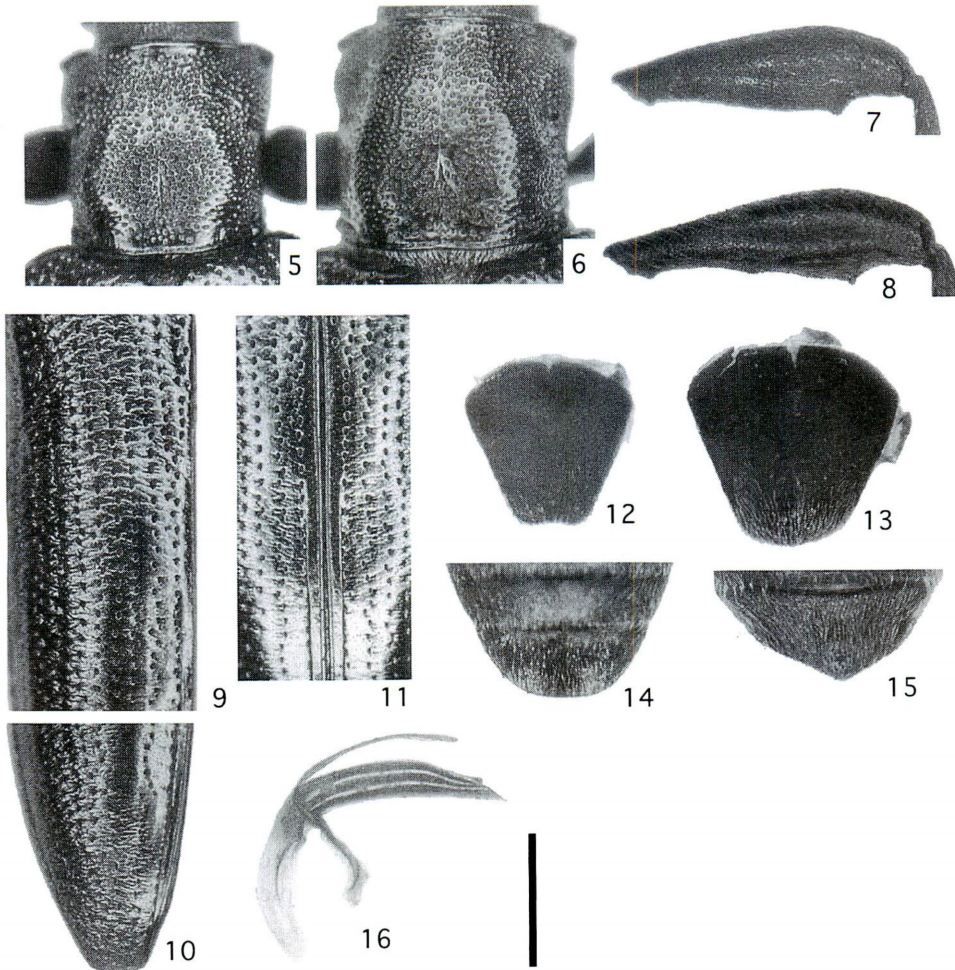
*Donacia* (*Donaciomima*) *yoshitomi* sp. nov.

(Figs. 1–21)

**Diagnosis.** Pronotal disc without setae; legs metallic; endophallus of male genitalia entirely elongate, median process straightly elongate, apex narrowly truncate with ostium bursae, paired dorsal sclerites slender, basal supporting block elongate.

**Description.** Male. Body entirely blackish coppery, sometimes red or purple. Eyes small; supraocular furrow present but shallow; vertex pubescent and swollen, with deep median line. Antenna entirely blackish coppery; antennomere 5 the longest of 2 to 6; antennomere 4 slightly longer than 3; antennomere 4 twice as long as 2. Pronotal outline quadrate, length longer than width, anterior and posterior corners prominent; anterolateral calli present but callosal sulcus indistinct; disc finely punctate without transverse rugae; median line indistinct; basal sulcus present but shallow and sparsely punctate. Elytron with two shallow depressions on baso-sutural and mid-sutural parts of disc; sutural interval finely punctate, without rugae, gradually narrowed

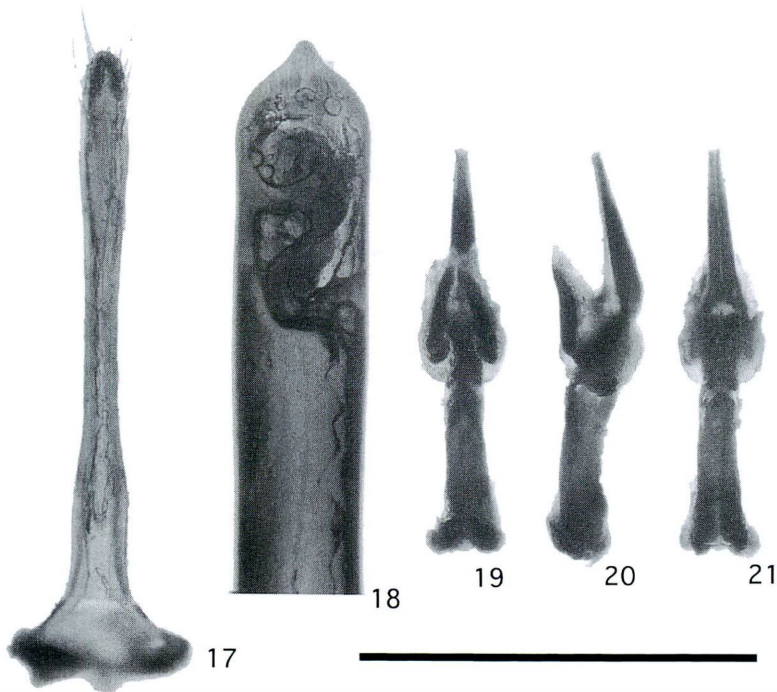




Figs. 5–16. *Donacia yoshitomi* sp. nov. — 5–6, Pronotum (5, male; 6, female); 7–9, elytra (7, basal to middle part of left elytron; 8, apex of left elytron; 9, sutural interval of elytra); 10–11, metafemur (10, male; 11, female); 12–13, pygidium (12, male; 13, female); 14, male genitalia; 15–16, last sternite (15, male; 16, female). Scale bar=1.0 mm.

towards apex; other intervals finely rugose and punctulate; apex truncate, outer and inner apical angles rounded. Legs entirely metallic colored; outer apical angle of protibia acute with a small spine; metafemur with a small tooth. Pygidial apex emarginate. Median lobe of genitalia narrowed apically, with a median lip; a cap of tegmen slender. Sterna entirely coppery and pubescent; last sternite (sternum VII) punctate,

Figs. 1–4. *Donacia yoshitomi* sp. nov.; 1–2, male (holotype); 3–4, female. — 1, 3, Dorsal view; 2, 4, ventral view. Scale bar=5.0 mm.



Figs. 17–21. Male genitalia of *Donacia yoshitomii* sp. nov. — 17, Tegmen; 18, apex of median lobe; 19–21, endophallus (19, dorsal view; 20, lateral view; 21, ventral view). Scale bar=1.0 mm.

apical shape truncate, apical depression shallow.

Female. Body entirely blackish coppery or red. Pronotal outline quadrate, width longer than length, pygidial apex gently rounded. Apical shape of last sternite entirely acute but rounded at apex.

Body length: males 8.4–8.9 mm, females 9.3–9.8 mm.

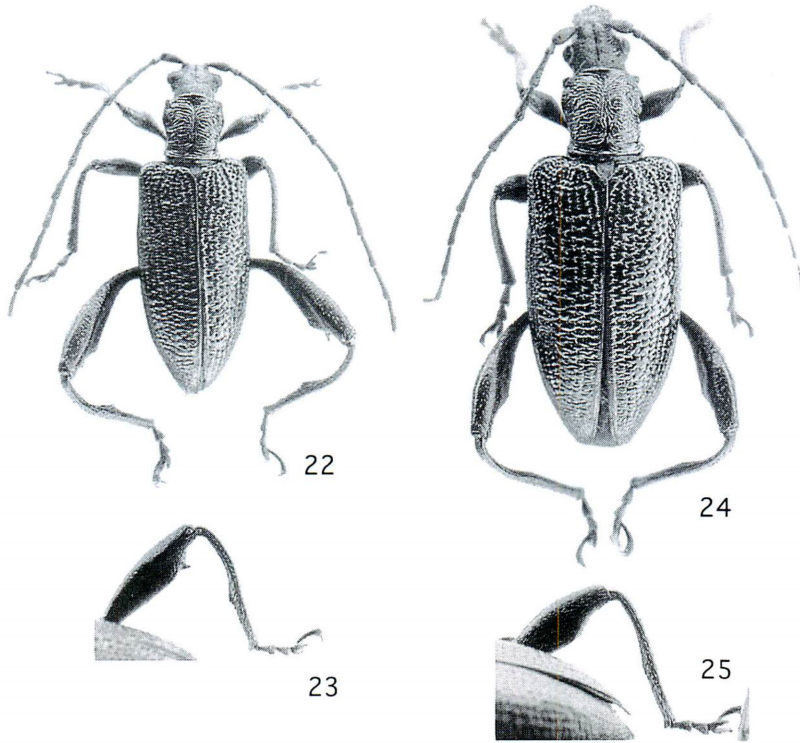
*Comparison.* The new species resembles *Donacia impressa* PAYKULL in most characters. Apical shape of endophallic median process is the most useful character for their identification: median process straightly elongate in the new species, short, slender and bent toward the posterior side in *D. impressa*.

*Remarks.* The subgenus *Donaciomima* MEDVEDEV is a relatively large group in the Donaciinae and includes about 50 Palearctic and 20 Nearctic species (ASKEVOLD, 1990, 1991). The new species is the first member of the subgenus from Southeast Asia.

*Distribution.* Laos.

*Host plants.* Cyperaceae.

*Type series.* Holotype and 77 paratypes are designated. Holotype. ♂, Phu Pan (Mt.), Ban Saleui, Houaphan Prov., Laos, 28–IV~6–V–2002, H. YOSHITOMI leg. (in coll. of EUMJ: Entomological Laboratory, Faculty of Agriculture, Ehime University, Matsuyama, Japan). Paratypes. 11 ♂♂, 4 ♀♀, same data as holotype. 23 ♂♂, 8 ♀♀, same



Figs. 22–25. *Sominella longicornis* (JACOBY); 22–23, male (22, habitus; 23, right hind leg); 24–25, female (24, habitus; 25, right hind leg).

locality as holotype, 28–IV~2–V–2002, M. SATÔ leg. 26♂♂, 5♀♀, same locality as holotype, 27–IV–2003, T. NIISATO leg. Paratypes are housed in the EUMJ, SNM (Shinjiko Nature Museum, Hirata, Japan), OMNH (Osaka Museum of Natural History, Osaka, Japan), and Masataka SATÔ collection, Nagoya, Japan.

*Etymology.* The specific name of the new species is dedicated to Dr. Hiroyuki YOSHITOMI, who collected the holotype of the new species.

### *Sominella longicornis* (JACOBY)

(Figs. 22–25)

*Donacia longicornis* JACOBY, 1890, *Entomologist*, **23**: 84.

*Records.* 1♂, 1♀, Mt. Phu Pan, Ban Saleui, Xam Neua, Houaphan Prov., Laos, alt. ca 1,500–1,700 m, 4–V–2002, N. OHBAYASHI leg. (in coll. of EUMJ).

*Distribution.* Laos (new record); China (Zhejiang, Hubei, Fujian) (this report; Tan *et al.*, 1980).

The marsh, habitat of *Donacia yoshitomi* and *Sominella longicornis*, is shown in Fig. 26.



Fig. 26. Habitat of *Donacia yoshitomi* and *Sominella longicornis*, marsh on Phu Pan (photo by H. YOSHITOMI).

## 要 約

林 成多：ラオス産 *Donacia* 属の1新種の記載と *Sominella longicornis* (JACOBY) の記録（甲虫目ハムシ科ネクイハムシ亜科）。—— 筆者は、2002年の春に吉富博之博士、佐藤正孝博士、大林延夫博士がラオスの高地の湿地で採集された2種のネクイハムシを検討する機会を得た。*Donacia* 属の雄交尾器骨片（内袋）を含めて詳しく検討した結果、新種であるという結論に達し、*Donacia* (*Donaciomima*) *yoshitomi* sp. nov. として記載した。本新種はヨーロッパから知られる *Donacia impressa* PAYKULL に似ているが、骨片先端部の突起の形状が明瞭に異なる。また、*Sominella longicornis* はこれまで中国南部のみから知られていたが、ラオスから初めて記録された。なお、*D. yoshitomi* の正基準標本は、愛媛大学農学部昆虫学研究室（EUMJ）に保管されている。

## References

- ASKEVOLD, I. S., 1990. Reconstructed phylogeny and reclassification of the genera of Donaciinae (Coleoptera: Chrysomelidae). *Quaest. ent.*, **26**: 601–664.
- 1991. Classification, reconstructed phylogeny, and geographic history of the New World members of *Plateumaris* THOMSON, 1859 (Coleoptera: Chrysomelidae: Donaciinae). *Mem. ent. Soc. Can.*, **157**: 5–175.
- KIMOTO, S., & J. L. GRESSITT, 1979. Chrysomelidae (Coleoptera) of Thailand, Cambodia, Laos and Vietnam. I. Sagrinae, Donaciinae, Zeugophorinae, Megalopodinae and Criocerinae. *Pacif. Ins.*, **20**: 191–256.
- TAN, J., P. YU, H. LI, S. WANG & S. JIANG, 1980. Coleoptera: Chrysomelidae (I). *Fauna of Chinese Economic Insects*, (18). xiii + 213 pp. Science Press, Beijing. (In Chinese.)