

A New Subspecies of *Leptaulax matsumotoi* (Coleoptera, Passalidae) from Kachin, Myanmar

Masahiro KON

School of Environmental Science, The University of Shiga Prefecture,
Hassaka-cho 2500, Hikone, Shiga, 522–8533 Japan

and

Azuma ABE

Sakaemachi 4–12–2, Hirosaki, Aomori, 036–8336 Japan

Abstract A new subspecies of *Leptaulax matsumotoi* is described from Myanmar under the name of *L. matsumotoi kachinensis* ssp. nov.

Leptaulax matsumotoi was described from Phu Pan, Laos by KON *et al.* (2003). Recently, the second author collected this species from Kangfang, Kachin, Myanmar. After a comparison of the present specimens from Myanmar with the type series of *L. matsumotoi* from Laos, it was revealed that the specimens from Myanmar are slightly different from the type series in external morphology and the male genitalia. Thus, we describe a new subspecies of *L. matsumotoi* from Myanmar.

Leptaulax matsumotoi kachinensis ssp. nov.

(Figs. 1, 3, 5)

Body length is $18.1\text{ mm} \pm 0.91$, 16.3–19.0 mm (mean \pm SD, range; $n=7$). No sexual dimorphism is evident.

The present new subspecies is different from the nominotypical one in the following points: 1) the side of pronotum is densely punctured almost as a whole, whereas in the nominotypical one, it is impunctate except near the anterior corner and in the scar (Fig. 2); 2) the humerus is hairless, whereas in the nominotypical one, it is hairy; 3) in the male genitalia, the distal margin of basal piece is strongly incised at the middle on the ventral side, whereas in the nominotypical one, it is moderately incised (Fig. 4).

Type series. Holotype: ♂, Kangfang, Kachin, Myanmar, 5–VI–2007, A. ABE leg. Paratypes: 6 ♀♀, the same data as for the holotype. The holotype is deposited in the collection of the Department of Zoology, National Museum of Nature and Science,



Fig. 1. Habitus of *Leptaulax matsumotoi kachinensis* ssp. nov., holotype, male, scale 5 mm.

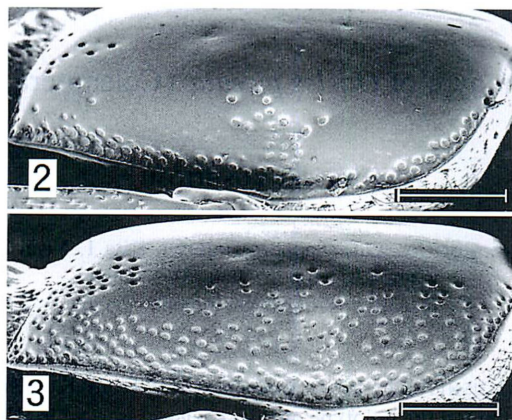
Tokyo.

Distribution. Myanmar (Kachin).

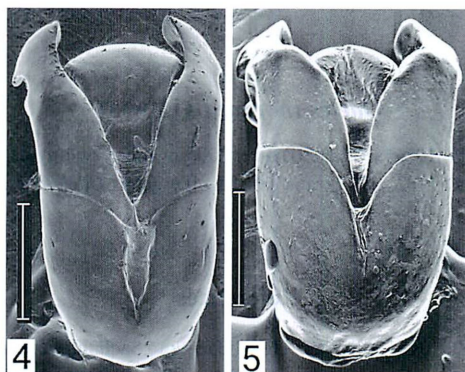
Specimens compared. *Leptaulax matsumotoi matsumotoi* KON, JOHKI et ARAYA: holotype, ♂, Phu Pan, 1,800 m, Houapan, Laos, 4-III-2003; paratypes, 16 ♂♂, 19 ♀♀, ditto, 4~7-III-2003.

Acknowledgments

The last author wishes to express his cordial thanks to Mr. H. SHIZUYA for giving him the opportunity to collect the present specimens. This study was supported in part by a Grant-in-Aid from the Japan Society for the Promotion of Science (No. 18510203).



Figs. 2–3. Pronotum, left lateral view, scale 1 mm. 2, *L. matsumotoi matsumotoi*, male; 3, *L. matsumotoi kachinensis* ssp. nov., holotype, male.



Figs. 4–5. Male genitalia, ventral view, scale 0.5 mm. 4, *L. matsumotoi matsumotoi*, male; 5, *L. matsumotoi kachinensis* ssp. nov., holotype, male.

要 約

近 雅博・阿部 東：クロツヤムシの1種の *Leptaulax matsumotoi* のミャンマーからの1新亜種。—— ミャンマーから *Leptaulax matsumotoi* の1新亜種を記載し、*L. matsumotoi kachinensis* ssp. nov. と名付けた。

Reference

- KON, M., Y. JOHKI & K. ARAYA, 2003. A new species of the genus *Leptaulax* (Coleoptera, Passalidae) from Phu Pan, Laos. *Elytra, Tokyo*, **31**: 149–153.