

方の河川上流部には、ナガハナノミ科の大型幼虫が生息しており、とりわけ岩手県では普通にみられるが、これまで成虫との対応関係は不明であった。2008年4月21日に岩手県八幡平市松尾で採集した終齢幼虫を室内で飼育した結果、エゾヒゲナガハナノミの成虫2頭が羽化した。本種の幼虫は、背面からみて腹部に9節が認められ、第9節背板の先端には尾突起があることから、同様な環境に生息する *Epilichas* 属とは容易に識別できる。これらの属も含め、国内では4属の幼虫が水生で湿地や源流、滝の壁面などに生息しており、属までの検索表を作成した。

References

- LAWRENCE, J. F., 1991. Ptilodactylidae (Dryopoidea). In STEHR, F. W. (ed.), *Immature Insects*, 2: 391–394. Kendall/Hunt Publishing Co., Dubuque, Iowa.
- LEE, C.-F., J. F. LAWRENCE & M. SATO, 2005. Description of a new species of *Drupeus* LEWIS (Coleoptera: Ptilodactylidae), with a discussion of the systematic position of the genus based on larval, pupal, and adult characters. *Insect Syst. Evol.*, 36: 371–394.
- LEWIS, G., 1895. On the Dascillidae and malacoderm Coleoptera of Japan. *Ann. Mag. nat. Hist.*, (6), 16: 98–122, pl. 6.
- SATO, M., 1972. Life of the psephenid beetles of Japan. *Insectarium, Tokyo*, 9: 102–105. (In Japanese.)
- 2006. Ptilodactylidae. In LÖBL, I., & A. SMETANA (eds.), *Catalogue of Palaearctic Coleoptera*, 3: 453–454. Apollo Books, Stenstrup.
- SPANGLER, P. J., 1983. Immature stages and biology of *Tetraglossa palpalis* CHAMPION (Coleoptera: Ptilodactylidae). *Ent. News*, 94: 161–175.

Elytra, Tokyo, 36(2): 285–286, November 22, 2008

Calophagus pekinensis LESNE, 1902, a Bostrichid Beetle new to the Japanese Fauna

Jerzy BOROWSKI¹⁾ and Piotr WĘGRZYNOWICZ²⁾

¹⁾ Division of Forest Protection and Ecology, Warsaw University of Life Sciences,
Nowoursynowska 159/34, 02-776 Warsaw, Poland
e-mail: jerzy_borowski@sggw.pl

²⁾ Museum and Institute of Zoology, Polish Academy of Sciences,
Warsaw, Wilcza 64 00-679 Warsaw, Poland
e-mail: piotr@miiz.waw.pl

French entomologist Pierre LESNE described a new genus based on a single species, *Calophagus pekinensis* in 1902. Five type-specimens were collected in the north of China, more specifically in the surroundings of Beijing (LESNE, 1902; BOROWSKI & WĘGRZYNOWICZ, 2007). The genus *Calophagus* belongs to the tribe Xyloperthini and subfamily Bostrichinae of the family

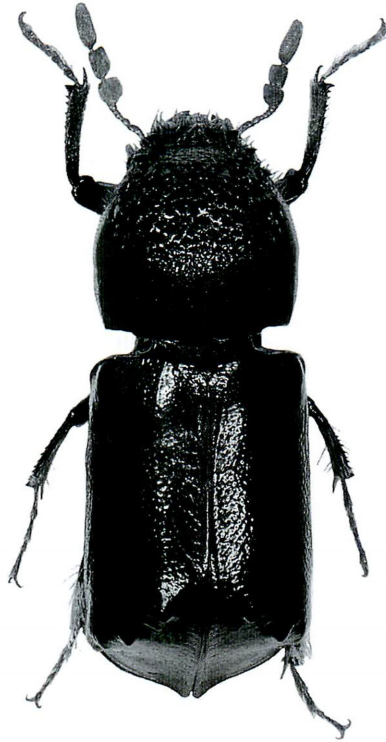


Fig. 1. *Calophagus pekinensis* LESNE, dorsal view.

Bostrichidae (BOROWSKI & WĘGRZYNOWICZ, 2007). Hitherto there was no information available concerning this species, except the original description and subsequent catalogues. Working on the collection of the Museum and Institute of Zoology, Polish Academy of Sciences in Warsaw, among the unidentified material of Witold EICHLER's collection we found *Calophagus pekinensis*. Single specimen of this species was collected on the Tsushima Islands (Nagasaki Prefecture) (labeled "Tsushima, Japan", "no 10066").

It is the first record for this species for more than 100 years and first record for the Japanese fauna. Taking into consideration the above mentioned data and the geographical distribution given by LESNE, it is possible to suppose that this species is also distributed in the Korean Peninsula.

We would like to thank our colleague Piotr ŚLIPIŃSKI for taking photo of the specimen of *Calophagus pekinensis*.

References

- BOROWSKI, J., & P. WĘGRZYNOWICZ, 2007. World Catalogue of Bostrichidae (Coleoptera). 247 pp., 8 plates. Mantis, Olsztyn.
- LESNE, P., 1902. Synopsis des Bostrychides paléarctiques. *L'Abeille, Journal d'Entomologie, Paris*, **30**: 105–136, 4 plates.