

References

- IMURA, Y., 2001. A new *Platycerus* (Coleoptera, Lucanidae) discovered from Shennongjia of western Hubei, China. *Gekkan-Mushi, Tokyo*, (362): 26–29. (In Japanese, with English title, description and summary.)
- 2002. A new subspecies of *Platycerus hiurai* (Coleoptera, Lucanidae) from Mt. Xilingxue Shan in central Sichuan, China. *Ibid.*, (381): 19–21. (In Japanese, with English title and description.)
- 2005 a. Records of *Platycerus* (Coleoptera, Lucanidae) from Henan Province, Central China. *Elytra, Tokyo*, **33**: 497–500.
- 2005 b. On the genus *Platycerus* (Coleoptera, Lucanidae) of Mt. Gongga Shan and Mt. Erlang Shan in west-central Sichuan, Southwest China. *Ibid.*, **33**: 501–512.
- 2006 a. The male of *Platycerus businskyi* (Coleoptera, Lucanidae), with additional records of two other congeners from the Qinling Mountains of Central China. *Ibid.*, **34**: 127–134.
- 2006 b. Record of *Platycerus bashanicus* (Coleoptera, Lucanidae) from Mt. Guangtuo Shan in northeastern Chongqing Shi, Central China. *Ibid.*, **34**: 138.
- 2006 c. The genus *Platycerus* of China (Coleoptera, Lucanidae). *Gekkan-Mushi, Tokyo*, (426): 23–32. (In Japanese, with English title.)
- 2007. A new species of the genus *Platycerus* (Coleoptera, Lucanidae) from Mt. Emei Shan in central Sichuan, Southwest China. *Elytra, Tokyo*, **35**: 319–323.
- 2008. Five new taxa of the genus *Platycerus* (Coleoptera, Lucanidae) from China. *Ibid.*, **36**: 109–128.
- & M. TANIKADO, 1998. Two new *Platycerus* (Coleoptera, Lucanidae) from the Dabashan Mountains in Central China. *Jpn. J. syst. Ent., Matsuyama*, **4**: 93–96.
- TANIKADO, M., & M. TABANA, 1997. Notes on the lucanid genus *Platycerus* (Coleoptera) in mainland China —Descriptions of two new species of the genus from the Dalian Mountains in southern Sichuan Province—. *Gekkan-Mushi, Tokyo*, (316): 2–8. (In Japanese, with English title and description.)
- & ——— 1998. Notes on the lucanid genus *Platycerus* (Coleoptera) in mainland China (3) —Description of a new species from Li Xian in Sichuan Province and a review of the Chinese species of the genus—. *Ibid.*, (333): 13–17. (In Japanese, with English title and description.)

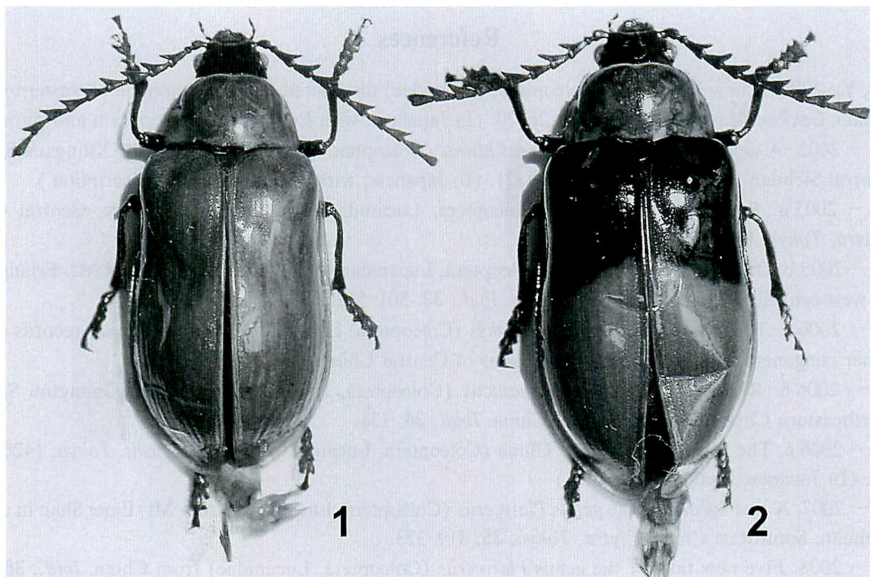
Elytra, Tokyo, **36**(2): 299–300, November 22, 2008

Color Variation of *Metallidascillus wakaharai* (Coleoptera, Dascillidae)

Hiroyuki YOSHITOMI

Bioindicator Co., Ltd. (Sapporo Branch), Kita 1,
Nishi 2–11, Chuô-ku, Sapporo, 060–0001 Japan
E-mail: yoshitomi@bioindicator.co.jp

Metallidascillus wakaharai SATÔ has been recorded from Laos, Thailand and Vietnam (SATÔ,



Figs. 1–2. *Metallidascillus wakaharai*, ♂, habitus: 1, unicolored form; 2, bicolored form.

2003, 2005; SATÔ *et al.*, 2007). The type series and the additional specimens have all their elytra unicolored (“unicolored form” in this paper). Recently I had the opportunity to examine the “bicolored form” (BF) of this species collected from Central Laos. I thank Mr. Hiroyuki WAKAHARA, Dr. Nobuo OHBAYASHI, and Dr. Tatsuya NIISATO for their kindness in offering me invaluable specimens used in this study.

Specimens examined. 2 ♂♂, 4 ♀♀ (1 ♀ BF), Phou Samsoun, 2,000 m, Xiengkhouang Prov., C. Laos, 13–IV–2008, H. WAKAHARA leg.; 3 ♂♂ (1 ♂ BF), same locality and collector, 18–IV–2008 (figs. 1–2); 1 ♂, 4 ♀♀ (1 ♂ BF), Phou Tonmon, 1,950 m, Xiengkhouang Prov., C. Laos, 12–IV–2008, H. WAKAHARA leg.; 1 ♀, same locality and collector, 16–IV–2008.

Remarks. BF has the proximal third of elytra (including scutellum) black, but it agrees with the unicolored form by all other characters (including male genitalia).

References

- SATÔ, M., 2003. Miscellaneous notes on the Laotian Coleoptera, I. Description of a new species of the genus *Metallidascillus* (Coleoptera, Dascillidae). *Elytra, Tokyo*, **31**: 367–369.
- , 2005. Additional records of *Metallidascillus* species (Coleoptera, Dascillidae). *Elytra, Tokyo*, **33**: 332.
- , N. OHBAYASHI, & H. YOSHITOMI, 2007. Description of the male of *Metallidascillus wakaharai* (Coleoptera, Dascillidae). *Jpn. J. syst. Ent.*, **19**: 9–10.