

る過程で、本州中部の山地帯で採集された、この種に近縁のいくつかの種を見出した。これらを詳細に検討した結果、5種に識別され、そのうちの北アルプス産の個体は上記のドウガネナガハネカクシに同定された。残りの白山、茶臼岳、日光および北岳山麓の広河原で採集された個体は、それぞれ雄交尾器に若干の形態的差異が認められ未記載種と判定されたので、ハクサンドウガネナガハネカクシ *Platydomene hakusana*, コジマドウガネナガハネカクシ *P. kojimai*, ニッコウドウガネナガハネカクシ *P. nikkoensis* およびヒロガワラドウガネナガハネカクシ *P. hirogawarana* と命名・記載した。

References

- HIRAMATSU, S., 2002. The appearance of the Coleoptera captured with pitfall trap at the high place of Mt. Hakusan. *Biogeography*, **4**: 13–18.
- SAWADA, K., 1965. New species of Staphylinidae, mainly from Mt. Jōnen, the Japan Alps, (I). *Ent. Rev. Japan, Osaka*, **18**: 11–18, pl. 2.
- SMETANA, A., 2004. Family Staphylinidae LATREILLE, 1802. Subfamily Paederinae FLEMING, 1821. In LÖBL, L., & A. SMETANA (eds.), *Cat. Palaearct. Coleopt.*, **2**: 579–624. Apollo Books, Stenstrup.

Elytra, Tokyo, **36**(2): 341–342, November 22, 2008

New Distributional Records of *Micropodabrus maculivertex* (Coleoptera, Cantharidae)

Yūichi OKUSHIMA¹⁾ and Naoki TAKAHASHI²⁾

¹⁾ Kurashiki Museum of Natural History, Chūō 2–6–1, Kurashiki-shi, Okayama, 710-0046 Japan

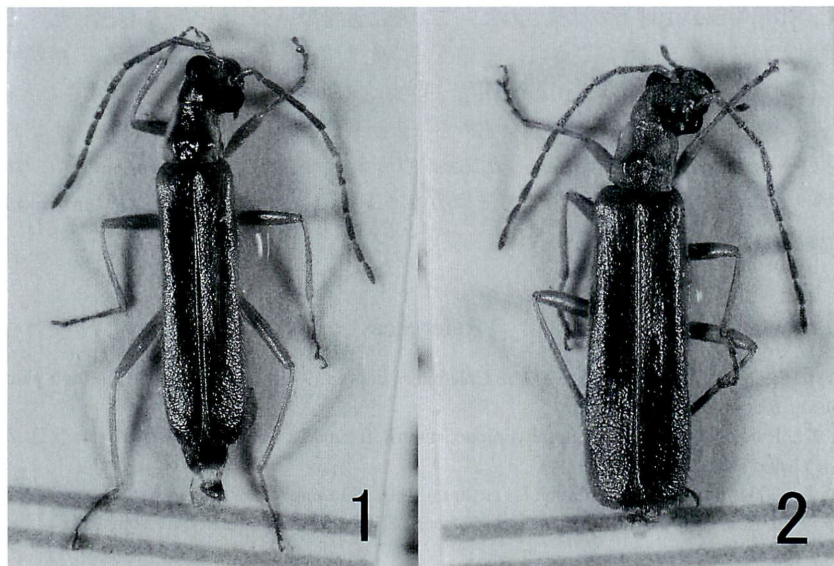
²⁾ The Kyushu University Museum, Kyushu University, Fukuoka, 812–8581 Japan

Micropodabrus maculivertex ISHIDA, 1989, was described from Okinawa-hontō Island of the Ryukyu Islands. IMASAKA (1992) additionally recorded this species from Amami-ōshima Island and Toku-no-shima Island of the middle Ryukyu Islands. In this short report, we will record it for the first time from Kume-jima and Tokashiki-jima lying nearby Okinawa-hontō. The collecting data are as given below.

***Micropodabrus maculivertex* ISHIDA, 1989**

(Figs. 1–2)

Micropodabrus maculivertex ISHIDA, 1989, *Ent. Rev. Japan, Osaka*, **44**: 82, figs. 1, 3 a, 4 a. — IMASAKA, 1992, *Coleopterists' News, Tokyo*, (100): 30. — KIRIYAMA & KINODA, 2000, *Tatehamodoki, Miyazaki*, (36): 4, figs. 13 A, 13 C–D.



Figs. 1-2. *Micropodabrus maculivertex* ISHIDA, from Kume-jima Is., Ryukyus; 1, male; 2, female.

Specimens examined. Kume-jima, Ryukyus: 1 ♀, Daruma-yama, 9-IV-1990, T. UENO leg. (KURA); 2 ♂♂, 1 ♀, Uézu, 14-IV-1995, N. TAKAHASHI leg. (NTC); 1♂, Uézu (at light), 14-IV-1995, N. TAKAHASHI leg. (NTC); 2 ♂♂, Daruma-yama-Ô-dake, 15-IV-1995, N. TAKAHASHI leg. (NTC); 5 ♂♂, 1 ♀, near Âra-dake, 4-IV-1996, Y. OKUSHIMA leg. (KURA); 2 ♂♂, 5 ♀♀, near Daruma-yama, 5-IV-1996, Y. OKUSHIMA leg. (KURA); 2 ♂♂, 2 ♀♀, near Daruma-yama, 7-IV-1996, Y. OKUSHIMA leg. (KURA). Tokashiki-jima, Ryukyus: 1 ♀, upper course of the Tokashiki-gawa, 26~27-II-2004, F. SATOU leg. (KURA).

Depository of the specimens examined. The specimens recorded above are preserved in the Kurashiki Museum of Natural History (KURA) and in the collection of N. TAKAHASHI (NTC).

Distribution. Ryukyus: Amami-ôshima, Toku-no-shima, Okinawa-hontô, Kume-jima (new record), Tokashiki-jima (new record).

Notes. The blackish markings on the vertex and pronotum tend to become pale-coloured in individuals from Kume-jima Island.

We wish to express our hearty thanks to Dr. Shun-Ichi UENO for his critical reading of the manuscript, and Messrs. Teruhisa UENO and Fumiyasu SATOU for their kind support of valuable materials.

References

- IMASAKA, S., 1992. Notes on *Stenopodabrus longipes* [ホソナガジョウカイについて]. *Coleopterists' News, Tokyo*, (100): 27-30. (In Japanese.)
- ISHIDA, K., 1989. Two new species of the cantharid beetles from Okinawa (Coleoptera, Cantharidae). *Ent. Rev. Japan, Osaka*, 44: 81-85.
- KIRIYAMA, I., & T. KINODA, 2000. Records of cantharid beetles from Kyushu (Coleoptera, Cantharidae) [九州産ジョウカイボン科の記録]. *Tatehamodoki, Miyazaki*, (36): 1-14. (In Japanese.)