

要 約

森田誠司・戸田尚希・蟹江 昇：中部地方から採集されたヒラタゴミムシの1新種。——岐阜県から採集された標本を基に、ハクサンルリヒラタゴミムシ *Paranchodemus ishiguroi* MORITA, TODA et KANIE を記載した。本種は、中部～東北地方から知られるオオアオグロヒラタゴミムシ *P. calleides* (BATES) に近縁であるが、背面につよい青色ないし緑青光沢をもつことのほか、前胸背板の形、幅広い上翅の基部などの外部形態から、容易に識別される。

References

- BATES, H. W., 1883. Supplement to the geodephagous Coleoptera of Japan, chiefly from the collection of Mr. George LEWIS, made during his second visit, from February, 1880, to September, 1881. *Trans. ent. Soc. London*, **1883**: 205–290, pl. 13.
- BOUSQUET, Y., 2003. Tribe Platynini BONELLI, 1810. In LÖBL, I., & A. SMETANA (eds.), *Cat. Palaearct. Coleopt.*, 1: 449–469. Apollo Books, Stenstrup.
- HABU, A., 1978. Carabidae: Platynini (Insecta: Coleoptera). *Fauna Japonica*. viii+447 pp., 36 pls. Keigaku Publ., Tokyo.
- LIEBHEER, J. K., 1989. Review of the palaearctic genus *Paranchodemus* HABU (Coleoptera: Carabidae: Platynini). *Pan-Pacif. Entomologist*, **65**: 1–11.
- MORVAN, P., 1998. Nouveaux genres et nouvelles espèces de *Colpodes* de l'Himalaya oriental. *Loened Aziad Amprevaned Feuraskelleged C'Hwiledig*, **3**: 1–52.

Elytra, Tokyo, **36**(2): 355–356, November 22, 2008

Description of the Male of *Onthophagus (Indachorius) cheyi* OCHI et KON (Coleoptera, Scarabaeidae)

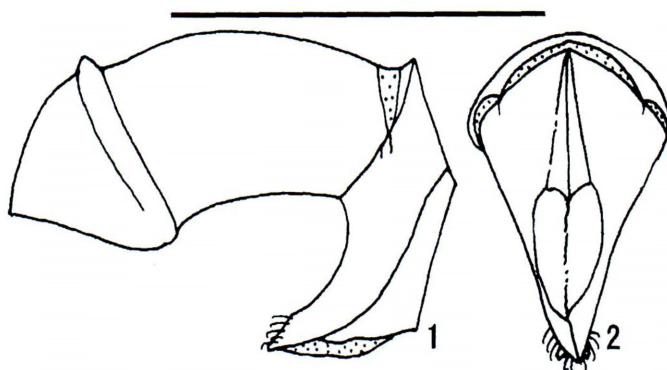
Teruo OCHI¹⁾, Masahiro KON²⁾ and Akira KASHIZAKI³⁾

¹⁾ Kôhûdai 5–21–6, Toyonô-chô, Toyono-gun, Osaka, 563–0104 Japan

²⁾ School of Environmental Science, The University of Shiga Prefecture,
Hassaka-chô 2500, Hikone, Shiga, 522–8533 Japan

³⁾ Nishi 6–2–10–1202, Kita 31, Kita-ku, Sapporo, Hokkaido, 001–0031 Japan

Onthophagus (Indachorius) cheyi was described by OCHI and KON (2006) based on three female specimens collected from Gomantong, near Sandakan, Sabah, Malaysia. Recently, the third author has collected the male of this species from Sepilok near the type locality. We briefly describe it herein and based on this specimen illustrate its male genitalia.



Figs. 1–2. Male genitalia of *Onthophagus (Indachorius) cheyi* OCHI et KON; left lateral view (1), and dorsal view (2). Scale 1 mm.

***Onthophagus (Indachorius) cheyi* OCHI et KON**

(Figs. 1–2)

Onthophagus (Indachorius) cheyi OCHI et KON, 2006, Ent. Rev. Japan, Osaka, **61**: 175.

Male. Length: 4.7 mm ($n=1$). Body more strongly convex than in the female. Color almost the same as in the female, though dark yellowish patches on each elytron are well developed; each elytron with four dark yellowish patches; basal two patches as in the female; latero-median one small and extending from 7th to 8th intervals; apical one also small and extending from 2nd to 4th intervals. Head slightly broader than in the female; gena more strongly produced laterad, with genal margin more distinctly rounded; vertex simply formed though feebly and transversely raised, without two slight tubercles; surface more distinctly micro-granulose, weakly and transversely wrinkled only along anterior margin; wrinkles clearly weaker than in the female, almost impunctate in the middle of vertex. Pronotum more strongly convex, slightly shorter than in the female. Elytral intervals flat. Pygidium more strongly convex. Protibia slenderer than in the female, with three external teeth at a glance; very small 4th proximal tooth is present, but barely noticeable. Aedeagus rather robust. Phallobase about 1.0 mm in length ($n=1$), about 0.5 mm in apical width ($n=1$). Parameres about 0.8 mm in length ($n=1$), gently narrowing towards apices in dorsal view, strongly bent backwards in the middle in lateral view; apices very slightly produced laterad and almost symmetrical in dorsal view, fringed with twenty or so white hairs on apical margin, the hairs partly hooked.

Specimen examined. 1 ♂, Sepilok, near Sandakan, Sabah State, Malaysia, 5-III-2008, A. KASHIZAKI leg.

Reference

- OCHI, T., & M. KON, 2006. Notes on the coprophagous scarab-beetles (Coleoptera: Scarabaeidae) from Southeast Asia (XII). Six new species of *Onthophagus (Indachorius)* from Borneo. Ent. Rev. Japan, Osaka, **61**: 169–180.