

## Two Additional Species of the Subfamily Cerambycinae (Coleoptera, Cerambycidae) from the Korean Peninsula

Seung Hwan OH

101, Manseung Bldg., 149–49, Myeongseong-ro, Cheorwon-gun, Kangwon-do, 269–802 Korea

**Abstract** Two longicorn beetles of the subfamily Cerambycinae are newly recorded from the Korean Peninsula. They are *Chloridolum (Leontium) lameeri* (PIC, 1900) and *Phymatodes (Phymatodes) testaceus* LINNAEUS, 1758.

### Introduction

One hundred five species of the subfamily Cerambycinae are recorded from the Korean Peninsula (LÖBL & SMETANA, 2010), of which ten species were additionally recorded after the monographic work by LEE (1987). Recently, I was able to examine two unrecorded species of the subfamily from the peninsula, *Chloridolum (Leontium) lameeri* (PIC, 1900) and *Phymatodes (Phymatodes) testaceus* LINNAEUS, 1758. In the following lines, I am going to record them with the detail collecting data.

#### *Chloridolum (Leontium) lameeri* (PIC, 1900)

[Korean name: Hong-jul-pul-saek-ha-neul-so]

(Figs. 1–2)

*Leontium lameeri* PIC, 1900, Ann. Soc. Ent. Belgique, **44**: 18.

*Leontium bicolor* KANO, 1930, Ins. mats., **5**: 44.

*Specimens examined.* 2 exs., Daema-ri, Cheorwon-gun, Gangwon-do, Korea, 27–V–2011, S.-H. OH leg.; 1 ex., same locality, 3–VI–2010, S.-H. OH leg.

*Distribution.* East and South China, Taiwan and Korean Peninsula (new record).

*Notes.* This species was originally described by PIC (1900) from China, and then was recorded by KANO (1930) from Taiwan. It is similar to *C. (L.) viride* (J. THOMSON, 1864), but easily distinguished from the latter by the reddish to yellowish external stripes on each elytron.

#### *Phymatodes (Phymatodes) testaceus* LINNAEUS, 1758

[Korean name: Keun-min-ddi-ha-neul-so]

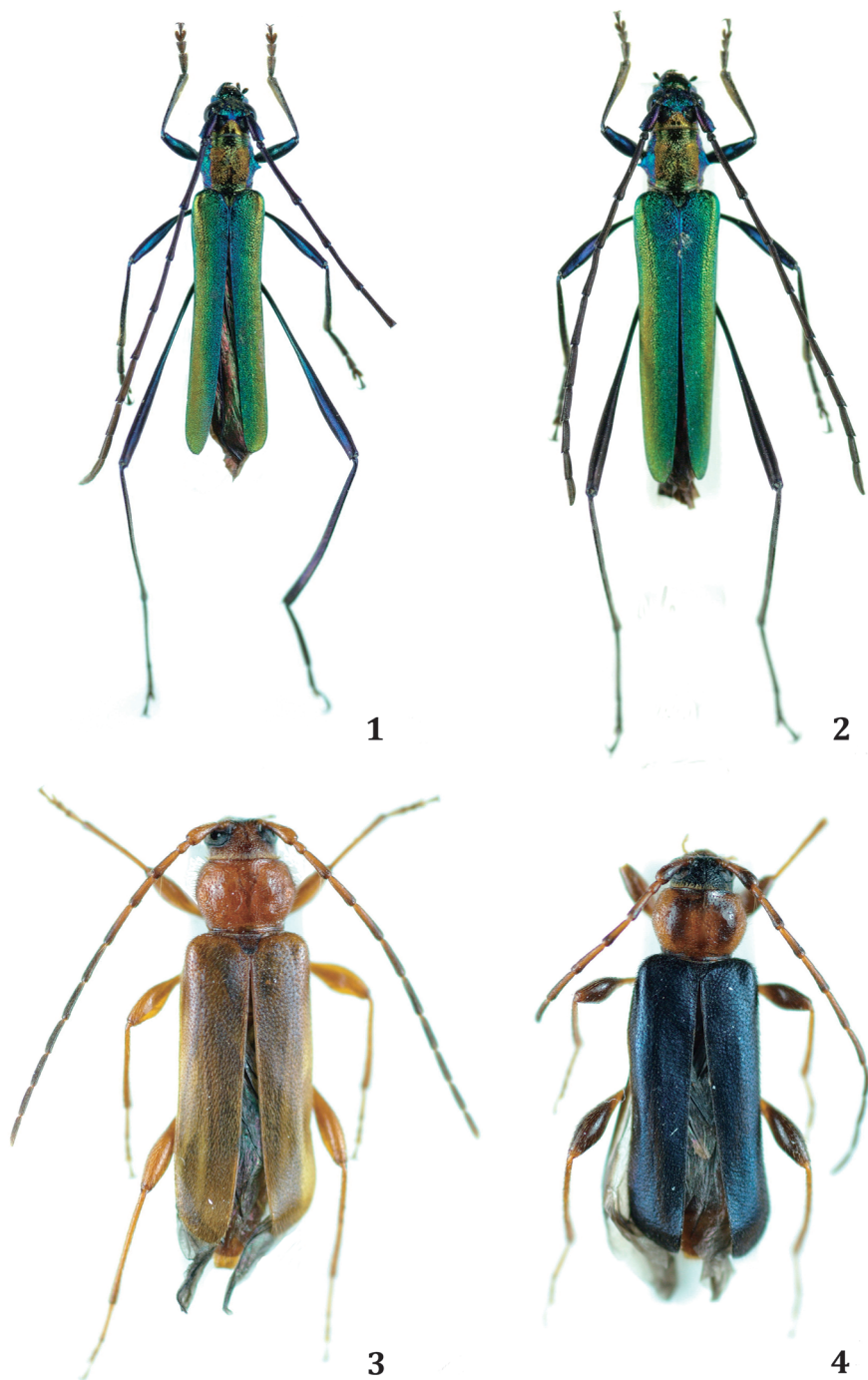
(Figs. 3–4)

*Cerambyx testaceus* LINNAEUS, 1758, Syst. Nat., 10th ed.: 396.

*Cerambyx fennicus* LINNAEUS, 1758, Syst. Nat., 10th ed.: 396.

*Specimens examined.* 2 exs., Mt. Gaji-san, Ulsan-si, Gyeongsangnam-do, Korea, 19–V–2012, H.-K. JANG leg.; 1 ex., Seosa-ri, Ulsan-si, Gyeongsangnam-do, Korea, 27–V–2012, S.-I. PARK leg.

*Distiribution.* Europe, Siberia, Far East Russia, Korean Peninsula (new record), Japan, Nearctic Region.



Figs. 1–4. Two additional species of the Cerambycinae from the Korean Peninsula. — 1–2, *Chloridolum* (*Leontium*) *lameeri* (PIC, 1900); 3–4, *Phymatodes* (*Phymatodes*) *testaceus* LINNAEUS, 1758 (3, female of metallic blue type; 4, female of yellowish brown type).

*Notes.* This species is easily distinguished from the other members of the genus *Phymatodes* by the long 1st segments of hind legs, and markedly elongate and parallel-sided elytra which are variable in color as yellowish brown or metallic blue.

### Acknowledgements

I wish to express my hearty thanks to Dr. T. NIISATO of Bioindicator Co., Ltd., Tokyo, for his critical reviewing of the original draft of this paper, and also due to Messrs H.-K. JANG and S.-I. PARK of Seoul for their kind offers of materials used in this study.

### 要 約

吳 升煥：朝鮮半島から新たに記録されるカミキリ亜科の2種。——朝鮮半島から現在まで記録されているカミキリ亜科は105種にのぼり、LEE (1987) の朝鮮半島天牛科甲虫誌以降にも10種が追加されている。本論文では、従来、記録のなかったアカヘリミドリカミキリ *Chloridolum (Leontium) lameeri* とチャイロホソヒタラカミキリ *Phymatodes (Phymatodes) testaceus* の2種を同半島から新たに記録した。前者は近隣の中国東・南部および台湾から記録されており、朝鮮半島南部まで分布を広げている事実は興味深い。一方、後者は旧北区一帯に広く分布する種で、これまでに朝鮮半島から記録がなかったこと自体が不思議である。

### References

- LEE, S.-M., 1987. The Longicorn Beetles of Korean Peninsula. 233 pp., 26 pls. National Science Museum, Seoul.
- LINNAEUS, C., 1758. Systema Naturae per regna tria naturae, secundum classes, ordines, genera, species, cum characteribus, differentiis, synonymiis, locis. ed. 10. 823 pp. Holmiae.
- LÖBL, I., & A. SMETANA, 2010. Catalogue of Palaearctic Coleoptera, 6. 924 pp. Apollo Books, Stenstrup.
- KANO, T., 1930. New and unrecorded longicorn beetles from the Japan-empire. *Ins. mats.*, **5**: 41–48.
- PIC, M., 1900. Contribution à l'étude des Cerambycidae de Chine et du Japon. *Ann. Soc. Ent. Belgique*, **44**: 16–19.

Manuscript received 15 March 2013;  
revised and accepted 12 July 2013.