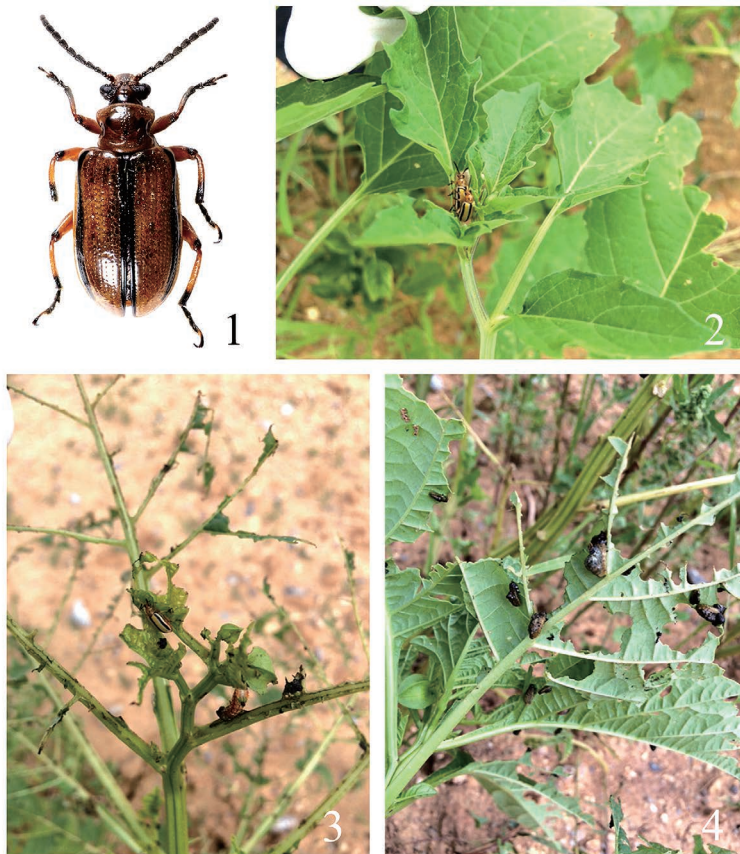


A New Distributional Record of *Lema (Petauristes) trivittata* SAY, 1824 (Coleoptera, Chrysomelidae, Criocerinae) from Okinawa-jima Is., the Okinawa Isls. in the Ryukyus, Southwestern Japan

Hiroaki SHIGETOH

Naha Plant Protection Station, Ministry of Agriculture, Forestry and Fisheries of Japan,
2–11–1 Minatomachi, Naha, Okinawa, 900–0001 Japan

Lema (Petauristes) trivittata SAY, 1824 was described from the Rocky Mountains in USA (SAY, 1824), and has been recorded from North America (WHITE, 1993). However, this species was discovered in 2011 from Miyako-jima Is. in the Miyako Isls., the Ryukyus, southwestern Japan (AOYAGI, 2012). It is now widely known from five islands in the south Ryukyus (Minna-jima, Ishigaki-jima, Iriomote-jima, Hateruma-jima, and Yonaguni-jima Is.) and Taiwan (KAWAJI, 2012; LEE & MATSUMURA, 2013; MINAMI & MIYAMOTO, 2015; KOHAMA & SUNAGAWA, 2019). MINAMI and MIYAMOTO (2015) confirmed that this species had already invaded to Japan in 2004. Recently, this species was also recorded from Yabuchi-jima Is. in the Okinawa Isls. in the Ryukyus (SHIGETOH, 2019), sug-



Figs. 1–4. Habitus and host plant of *Lema (Petauristes) trivittata* in Okinawa-jima Is. — 1, Dorsal habitus of *L. (P.) trivittata*; 2, *Physalis* sp. on which adults were collected; 3, adults feeding on *Physalis* sp.; 4, larvae feeding on *Physalis* sp.

gesting that the distribution area is expanding. This species is known to be associated with *Physalis angulata* and *P. peruviana* in Japan and Taiwan (AOYAGI, 2012; LEE & MATSUMURA, 2013).

In this report, *L. (P.) trivittata* was newly recorded from Okinawa-jima Is. in the Okinawa Isls. This is the second record of the species from the islands. The examined specimens are transferred by Mr. K. KIJIMA (Okinawa Prefectural Government, Naha) and are preserved at Naha Plant Protection Station, Naha (NPPS).

Serious agricultural damage caused by *L. (P.) trivittata* has not been reported in Japan. However, there is little information on the species in Japan. Further investigation is necessary in the future.

Before going further, I would like to thank Mr. K. KIJIMA for providing valuable specimens and photos for this report. I also thank Mr. Y. TATEMATSU (NPPS) for reviewing the manuscript.

Lema (Petauristes) trivittata SAY, 1824

[Japanese name: Misuji-kubi-boso-hamushi]

(Figs. 1–4)

Specimens examined. Japan: Okinawa Pref., 2 exs., Nago, Ôkita, 10.IX.2015, K. KIJIMA leg.

Distribution. Japan: the Okinawa Isls. (Yabuchi-jima Is.; Okinawa-jima Is. — new record), Miyako Isls. (Miyako-jima Is. and Minna-jima Is.), and Yaeyama Isls. (Ishigaki-jima Is., Iriomote-jima Is., Hateruma-jima Is., and Yonaguni-jima Is.) (AOYAGI, 2012; KAWAJI, 2012; MINAMI & MIYAMOTO, 2015; MINAMI, 2015; MINAMI, 2018; SHIGETOH, 2019; KOHAMA & SUNAGAWA, 2019); USA, Canada, and Taiwan (SAY, 1824; WHITE, 1993; LEE & MATSUMURA, 2013).

Notes. New to Okinawa-jima Is. This collecting date is four years earlier than the record from Yabuchi-jima Is., and therefore is the oldest distribution record in the Okinawa Isls. so far. In Okinawa-jima Is., adults and larvae of this species were collected feeding on *Physalis* sp. growing in a grassland.

References

- AOYAGI, M., 2012. *Lema trivittata* taken from Miyakojima Is., a new record from Japan. *Gekkan-Mushi, Tokyo*, (497): 27–28. (In Japanese, with English title.)
- KAWAJI, K., 2012. [*Lema trivittata* collected from Iriomote-jima Is.] *Gekkan-Mushi, Tokyo*, (502): 13–14. (In Japanese.)
- KOHAMA, T., & H. SUNAGAWA, 2019. [Distribution and host plant records of *Lema trivittata* from Minna-jima Is., the Miyako Isls. in Okinawa Pref.] *Sayabane, Tokyo*, (n. ser.), (35): 71–73. (In Japanese.)
- LEE, C.-F., & Y. MATSUMURA, 2013. On newly and recently recorded species of the genus *Lema* FABRICIUS (Coleoptera, Chrysomelidae, Criocerinae) from Taiwan. *Zookeys, Sofia*, **262**: 17–37.
- SAY, T., 1824. Descriptions of coleopterous insects collected in the late expedition to the Rocky Mountains, performed by order of Mr. CALHOUN, secretary of war, under the command of Major LONG. *Academy of Natural Sciences of Philadelphia*, **3**: 403–462.
- SHIGETOH, H., 2019. New distributional records of leaf beetles (Coleoptera, Chrysomelidae) from Yabuchi-jima Is., the Okinawa Isls., southwestern Japan. *Gekkan-Mushi, Tokyo*, (583): 41–45. (In Japanese, with English title.)
- MINAMI, M., 2018. Alien leaf beetles and seed beetles of Japan. *Nature and Insects, Tokyo*, **53** (9): 8–11. (In Japanese, with English title.)
- MINAMI, M., & T. MIYAMOTO, 2015. [Additional records of *Lema trivittata* from Japan.] *Gekkan-Mushi, Tokyo*, (529): 56–57. (In Japanese.)
- WHITE, R. E., 1993. A revision of the subfamily Criocerinae (Chrysomelidae) of North America north of Mexico. *USDA-ARS Technical Bulletin, Washington, D. C.*, **18005**: 1–158.

Manuscript received 11 August 2019;
revised and accepted 2 October 2019.