

- & ——— 2009. Study on prionine cerambycid genus *Megopsis* (Coleoptera, Cerambycidae) (Revisional studies of the genus *Megopsis* sensu LAMEERE, 1909–9). *Ibid.*, **37**: 313–342.
- & ——— 2010. A revision of the genus *Nepiodes* (Coleoptera, Cerambycidae, Prioninae) (Revisional studies of the genus *Megopsis* sensu LAMEERE, 1909–10). *Ibid.*, **38**: 169–192.
- LAMEERE, A., 1909. Révision des prionides. Douzième mémoire – *Megopsis*. *Ann. Soc. ent. Belg.*, **53**: 135–170.
- LEPESME, P., & S. BREUNING, 1952. Note préliminaire sur la classification des Coléoptères Cerambycides. *Trans. Ninth int. Congr. Ent.*, **1**: 39–42.

Manuscript received 20 March 2014;
revised and accepted 20 September 2014.

Elytra, Tokyo, New Series, **4** (2): 199–200

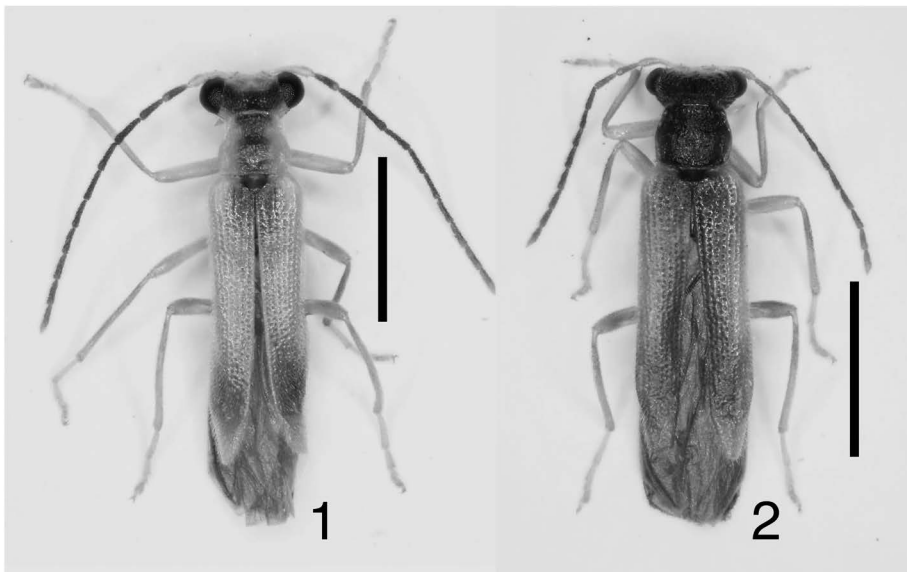
December 25, 2014

Occurrence of *Malthinus nakanei* (Coleoptera, Cantharidae, Malthininae) on Fukué Island of the Gotô Islands, Southwest Japan

Naoki TAKAHASHI

Department of Biological Science, Faculty of Sciences, Kyushu University, Fukuoka, 812–8581 Japan

Malthinus nakanei WITTMER, 1955 was described from Nagano Prefecture and has been known to occur in Honshu, Sado Island, Shikoku and Kyushu (SATÔ, 1985; IMASAKA & YAMAYA, 1993; YANO *et al.*, 2008). Although the species is slightly variable in general appearance such as body size and coloration (TAKAHASHI, pers. obs.) and an unnamed relative has been recorded (IMASAKA & NAKAMURA, 1993; TAKAHASHI *et al.*, 2001), a series of specimens collected from Fukué Island of the Gotô Islands, off western Kyushu, is identified with the



Figs. 1 & 2. *Malthinus nakanei* WITTMER, from Fukué Is. — 1, Male; 2, female. Scales: 1.0 mm.

species at present. In this brief report, the collecting data are given below as its new distributional record.

***Malthinus nakanei* WITTMER, 1955**

[Japanese name: Usuba-tsumaki-jōkai]

(Figs. 1 & 2)

Malthinus nakanei WITTMER, 1955, 41 ("Kiso-Fukushima, Nagano Pref.", Honshu, Japan). — NAKANE, 1963, 173, pl. 87, fig. 7. — DELKESKAMP, 1977, 344 (in list). — IMASAKA & OGATA, 1983, 27 (recorded as *Malthinus japonicus*, misidentification). — SATŌ, 1985, 116, pl. 19, fig. 14. — IMASAKA & YAMAYA, 1993, 56, pl. 7, fig. 34, pl. 9, fig. 34 (new to Sado Is.). — TAKAHASHI, 1998, 45 (in list). — KAZANTSEV & BRANCUCCI, 2007, 281 (in list). — YANO *et al.*, 2008, 9, fig. 35.

Specimens examined. [Gotō Islands: Fukué Island] 18 ♂♂, 9 ♀♀ (1 ♂, 1 ♀ in copula), Mt. Nanatsu, 2–V–2007, N. TAKAHASHI leg.; 1 ♂, Mt. Sasa, 3–V–2007, N. TAKAHASHI leg.

Distribution. Japan: Honshu, Sado Is., Shikoku, Kyushu (mainland), Gotō Is. (Fukué Is.) (new record).

References

- DELKESKAMP, K., 1977. Cantharidae. In WILCOX, J. A. (ed.), *Coleopterorum Catalogus Supplementa*, pars 165, fasc. 1. 485 pp. W. Junk, The Hague.
- IMASAKA, S., & S. NAKAMURA, 1993. The fauna of Cantharidae (Coleoptera) from Hiroshima Prefecture (Primary report). *Misc. Rept. Hiwa Mus. nat. Hist.*, (31): 43–65, pls. 1–4. (In Japanese, with English title.)
- & T. OGATA, 1983. Beetles collected from Mt. Taradake in 1983. *Koganemushi, Nagasaki*, (42): 23–34. (In Japanese.)
- & S. YAMAYA, 1993. The fauna of Cantharidae (Coleoptera) from Niigata Prefecture (1). *Bull. Nagaoka munic. Sci. Mus.*, (28): 47–62. (In Japanese, with English title.)
- KAZANTSEV, S. V., & M. BRANCUCCI, 2007. Cantharidae. 234–298 pp. In LÖBL, I., & A. SMETANA (eds.), *Catalogue of Palaearctic Coleoptera*, 4. Apollo Books, Stenstrup.
- NAKANE, T., 1963. Cantharidae. 170–173 pp., pls. 85–87. In NAKANE, T., K. OHBAYASHI, S. NOMURA & Y. KUROSAWA (eds.), *Iconographia Insectorum Japonicorum Colore Naturali Edita*, 2 (Coleoptera). Hokuryukan, Tokyo. (In Japanese, with Latin book title.)
- SATŌ, M., 1985. Cantharidae. 107–119 pp. [incl. pls. 17–19]. In KUROSAWA, Y., S. HISAMATSU & H. SASAJI (eds.), *The Coleoptera of Japan in Color*, 3. Hoikusha, Osaka. (In Japanese, with English title.)
- TAKAHASHI, K., 1998. Check-list of Cantharidae of Japan. *Kanagawa-Chūhō, Odawara*, (122): 29–48. (In Japanese, with English title.)
- TAKAHASHI, N., Y. OKUSHIMA & T. ICHITA, 2001. Cantharid beetles (Coleoptera, Cantharidae) of Aomori Prefecture, Northern Honshu, Japan, V. *Bull. Kurashiki Mus. nat. Hist., Kurashiki*, (16): 65–78. (In Japanese, with English title.)
- WITTMER, W., 1955. 21. Beitrag zur Kenntnis der palaearktischen Malacodermata (Coleoptera). *Mushi, Fukuoka*, 29: 39–45, pls. 4–5.
- YANO, S., Y. OKUSHIMA & N. TAKAHASHI, 2008. Cantharidae (Insecta, Coleoptera) of the Ishizuchi Range, Shikoku, Japan. *Bull. Omogo Mountain Mus., Kumakōgen*, (3): 1–13. (In Japanese, with English title.)

Manuscript received 31 July 2014;
revised and accepted 9 September 2014.