

New Record of *Scaphisoma taiwanum* LÖBL (Coleoptera, Staphylinidae, Scaphidiinae) from Shikoku, Japan

Yoshihiro SENDA¹⁾ and Tetsuya K. MATSUMOTO²⁾

¹⁾ Hiwa Museum of Natural Science, Hiwa 1119–1, Hiwa, Shôbara City, Hiroshima, 727–0301 Japan
E-mail: geostix666@gmail.com

²⁾ Graduate School of Environmental and Life Science, Okayama University, Tsushima-naka 1–1–1, Kita-ku, Okayama City, Okayama, 700–8530, Japan

Scaphisoma taiwanum LÖBL was originally described from Taiwan based on the fourteen specimens collected in Fenchihu and Wulai (LÖBL, 1980), and subsequently this species has been recorded from Japan and Russian Far East (LÖBL, 1997). From Japan, LÖBL (1982) recorded this species from Tochigi and Nara Prefectures for the first time, and has been known limited in Honshu (LÖBL, 1982; HOSHINA, 2013; SAITÔ *et al.*, 2017).

Recently, the second author collected many *Scaphisoma* specimens from mountainous area of Shikoku. After close examination, we concluded that a part of those are *S. taiwanum* unrecorded from Shikoku. Herein, we newly record this species from Shikoku as below.

We wish to our hearty thanks to Dr. Ryô OGAWA (Ehime Pref.) for identifying and giving the information of scaphidiine species, and to Dr. Hiroyuki YOSHITOMI (Ehime University Museum), Drs. Yûko MIYAZAKI and Muneto HIROBE (Okayama University) for their kind cooperation in various ways. This study was supported in part by Research Grant for Encouragement of Students, Graduate School of Environmental and Life Science, Okayama University.

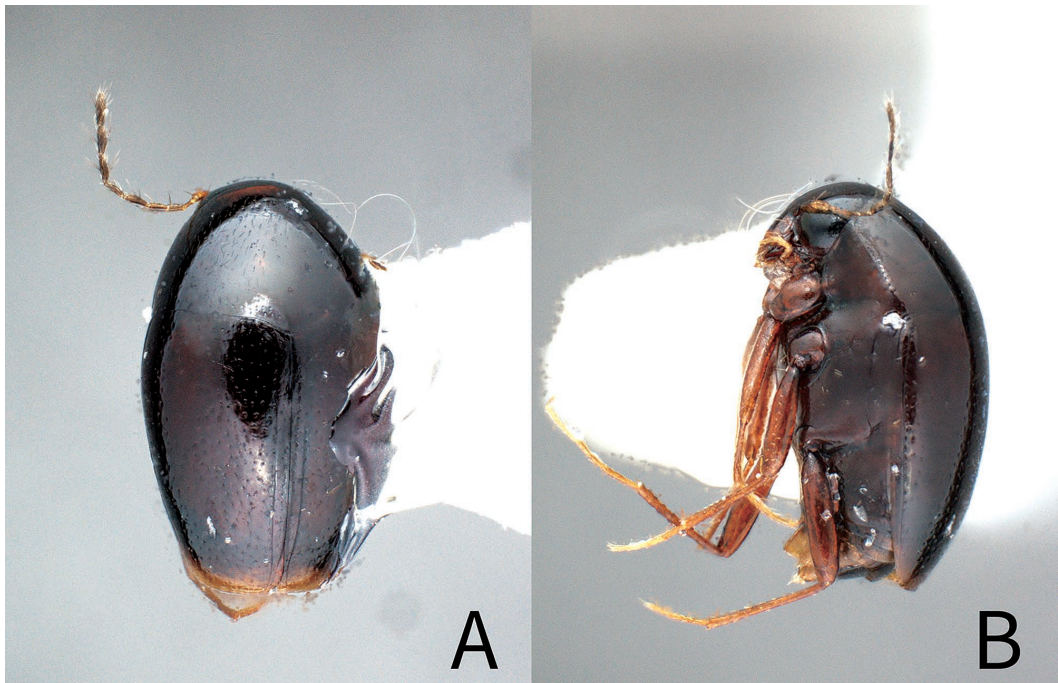


Fig. 1. Habitus of *Scaphisoma taiwanum* from Mt. Daisen-zan, Kagawa Pref., Shikoku. — A, Dorsal view; B, lateral view.

***Scaphisoma taiwanum* LÖBL, 1980**

Scaphisoma taiwanum LÖBL, 1980: 106; 1982: 327 [Japan]; 1993: 503 [Russian Far East]; 1997: 137 [catalogued]; 2004: 503 [catalogued]; SCHÜLKE & SMETANA, 2015: 743 [catalogued].

Specimens examined. [Shikoku: Kagawa Pref.] 1 ex., Mt. Ôtaki-san, Shionoe-chô, Takamatsu-shi, 22.V.2017, T. K. MATSUMOTO leg. (Fig. 1); 2 exs., same data, but 26.V.2017; 1 ex., same data, but 31.V.2017; 2 exs., same data, but 1.VI.2017; 2 exs., same data, but 2.VI.2017.

All specimens are preserved in the first author's private collection now, but will be deposited in Kurashiki Museum of Natural History, Hiwa Museum of Natural Science and Ehime University Museum, Japan.

References

- HOSHINA, H., 2013. Scaphidiinae. Pp. 123–127. In SHIBATA, Y., & M. MARUYAMA (eds.), *Catalogue of Japanese Staphylinidae (Insecta: Coleoptera)*. *Bulletin of the Kyushu University Museum*, (11): 69–218.
- LÖBL, I., 1980. Beiträge zur Kenntnis der Scaphidiidae (Coleoptera) Taiwans. *Revue Suisse de Zoologie*, **87**: 91–123.
- LÖBL, I., 1982 [1981]. Weitere Arten der Gattung *Scaphisoma* LEACH aus Japan (Coleoptera, Staphylinidae). *Archives des Sciences, Genève*, **34**: 327–334.
- LÖBL, I., 1993. Contribution to the knowledge of the Scaphidiinae (Coleoptera, Staphylinidae) of the Far Eastern Region of Russia. *Russian Entomological Journal*, **2**: 35–40.
- LÖBL, I., 1997. *Catalogue of the Scaphidiinae (Coleoptera: Staphylinidae)*. 190 pp. Museum d'histoire naturelle, Geneve.
- LÖBL, I., 2004. Scaphidiinae. Pp. 495–504. In LÖBL, I., & A. SMETANA (eds.), *Catalogue of Palaearctic Coleoptera*, **2**. 942 pp. Apollo Books, Stenstrup.
- SAITÔ, A., K. OZAKI, S. MIYANO, M. SUZUKI, O. SAITÔ, I. MURAKAWA & R. B. KURANISHI, 2017. Insect fauna of the University of Tokyo Chiba Forest, Mount Kiyosumi, Chiba, Japan. *Journal of Natural History Museum and Institute, Chiba, Special Issue*, (10): 61–232, vii–xvi (pls. 1–10) (In Japanese.)
- SCHÜLKE, M., & A. SMETANA, 2015. Staphylinidae. Pp. 304–900 In LÖBL, I., & D. LÖBL (eds.), *Catalogue of Palaearctic Coleoptera*, **2/1. Hydrophiloidea – Staphylinoidea. Revised and updated edition**. xxv + 900 pp. Brill, Leiden/Boston.

Manuscript received 18 June 2018;
revised and accepted 16 November 2018.