

## A New Species of the Genus *Callistethus* BLANCHARD, 1851 (Coleoptera, Scarabaeidae, Rutelinae) from Western Sulawesi

Kaoru WADA

4509–1, Oyama-cho, Machida-shi, Tokyo, 194–0212 Japan

**Abstract** A new species the genus *Callistethus* is described from western Sulawesi under the names of *C. andoi* sp. nov.

**Key words:** new species, *Callistethus*, Southeast Asia

The genus *Callistethus* BLANCHARD, 1850 includes about 90 species from the eastern Palearctic Region and the Oriental Region. They are divided into 11 groups by MACHATSCHKE (1972). Though eleven groups of the genus were proposed by MACHATSCHKE (1972), his classification based on some unreliable characters is somewhat questionable. One of them, the *excellens* group includes six species that have been recorded from Indochina to the Greater Sunda Islands. MACHATSCHKE (1972) also included *C. riedeli* LANSBERGE, 1880 as a member of the *excellens* group. On the other hand, I excluded *C. riedeli* from the *excellens* group and described total six new species and a subspecies that belong to the *riedeli* group from Sulawesi (WADA, 1998, 2000). The *riedeli* group of the genus *Callistethus* is characterized by the mesosternal process slender and sharp, weakly bent upward in lateral view.

In this time, I have an opportunity of examining four remarkable specimens which belong to the *C. riedeli* group through the courtesy of Mr. Takeshi MATSUMOTO. These four specimens apparently belonging to the single species were collected by Dr. Kiyoshi ANDO from two areas of western Sulawesi (under the permission of RISTEK No. 111/SIP/FRP/SM/IV/2012). This species is similar to *C. riedeli*, however, it seem to be morphologically differentiated on the species level. After a detailed study, I have concluded that this species should be new to science. In this article, I am going to describe them under the names *C. andoi* sp. nov.

Before going further, I wish to express my cordial appreciation to Mr. Takeshi MATSUMOTO and Dr. Kiyoshi ANDO for providing me with the invaluable materials.

### *Callistethus andoi* sp. nov.

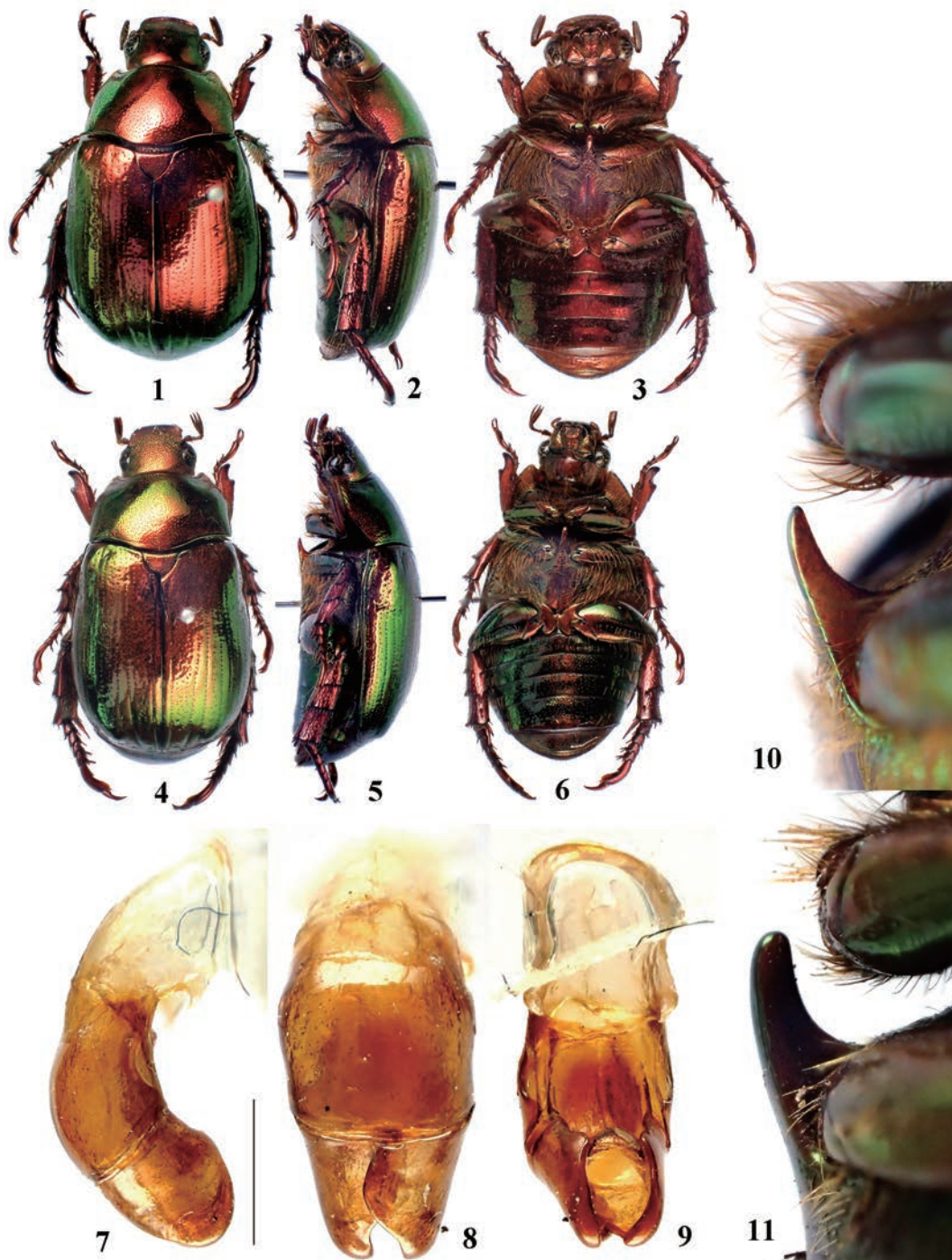
(Figs. 1–10)

Body length: 16.6–18.5 mm, width: 9.1–9.8 mm.

Dorsal surface and ventral surface except antennae and abdominal sternites red to deep red with strong greenish metallic luster, antennae reddish brown, first to 4th abdominal sternites deep green to deep red with strong metallic luster.

Head with suberect reddish brown setae (0.37–0.55 mm in length) along eyes; clypeus broadly truncate, ca. 2.5 times as wide as long, reflexed along margin, rugoso-punctate and partly coalescent in middle, reticulate rugulose in lateral portions; frons irregularly punctate in anterior portion, the punctures small, sparse and elliptical in middle, becoming smaller and sparser towards vertex, which are intermixed with minute punctures.

Pronotum 1.65–1.67 times as wide as long, narrowed apicad in apical half, almost parallel-sided in basal half; front angles acute and rounded at apex, hind angles obtuse and widely rounded at apex;



Figs. 1–11. *Callistethus* spp. — 1–10, *C. andoi* sp. nov. (1–3, holotype ♂; 4–6, 10, paratype ♀; 7–9, paratype ♂); 11, *C. riedeli riedeli* LANSBERGE, 1880, ♀. — 1–6, Habitus (1 & 4, dorsal view, 2 & 5, lateral view, 3 & 6, ventral view); 7–9, male genitalia (7, lateral view (right); 8, dorsal view; 9, ventral view), scale: 1 mm; 10–11, mesosternal process in lateral view.

disc irregularly scattered with round and small punctures, becoming larger and denser laterad, larger and sparser posteriad, with suberect reddish brown setae (0.62–0.88 mm in length) along lateral margins; anterior and lateral margins with rims extending to posterior margins opposite to the humeral swellings. Scutellum sparsely scattered with round punctures, which are densely intermixed with extremely small punctures (visible under 40×).

Elytra with 11 rows of round punctures; first interval irregularly scattered with large and round punctures, the rest intervals sparsely scattered with extremely small punctures (visible under 40×); sides weakly widened towards the middle and widest at the middle, then narrowed posteriad; distal margins almost straight and right-angled at apicosutural apex; lateral margins with rims thickened in basal half, then becoming thinner apicad and disappearing at hind corners; marginal membrane starting from basal 1/3 and narrow, then widened at hind corners, extending to apices.

Pygidium with erect yellowish brown setae (0.75–0.88 mm in length) in apical and antero-lateral portions; disc irregularly scattered with elongate punctures, becoming denser laterad, smaller anteriorly; outer margins distinctly rimmed, nearly straight laterally, widely rounded at apex.

Metasternum irregularly scattered with elongate punctures in middle, becoming larger and deeper laterad, almost glabrous in middle, irregularly furnished with suberect dark yellow setae (0.37–0.75 mm in length) in lateral portions; mesosternal process projected, short and slender, not extending to the level of procoxae, weakly rounded at apex in lateral view.

Abdominal sternites irregularly punctate, the punctures large and elongate, with a transverse row of suberect reddish yellow setae (0.25–0.62 mm in length) in lateral portions.

Protibiae bidentate, apico-external denticles prolonged, obtuse and slightly rounded at apex; inner claw of fore leg and outer claw of middle leg apically incised, forming two branches; outer claw of fore leg, inner claw of middle leg, outer and inner claws of hind leg simple and acuminate; inner surface of fifth protarsomere with one median denticle.

Genitalia distinctly curved in lateral view, the shape simple as shown in Figs. 7–9. Paramere symmetrical, the length ca. 1.0 mm and the width ca. 1.3 mm at base in dorsal view. Median lobe rather wide and large as compared with *C. riedeli*.

**F e m a l e.** Protibiae bidentate, apico-external denticles prolonged, obtuse and widely rounded at apex; inner surface of fifth protarsomere with slightly convex or lacking convex.

**Type series.** Holotype: ♂, Salo Bao, Mamasa Sulbar, West Sulawesi, Indonesia, 22.XI.2012, Kiyoshi ANDO leg. Paratypes: 1 ♂, 1 ♀, same data as for the holotype; 1 ♀, Kampung Bussu, Mamasa Sulbar, West Sulawesi, Indonesia, 21.XI.2012, Kiyoshi ANDO leg.

**Type depository.** The holotype designated here will be preserved in the collection of the Department of Zoology, National Museum of Nature and Science, Tsukuba (NMST), and the remaining paratypes are preserved in my personal collection.

**Notes.** This species is closely related to *Callistethus riedeli riedeli* LANSBERGE, 1880 from northern Sulawesi and *C. riedeli selatanensis* WADA, 1998 from central Sulawesi, but can be distinguished from the latter by the different coloration and the shape of mesosternal process.

**Etymology.** This new species named in honor of Dr Kiyoshi ANDO who had supported my start of Scarabaeoidology, as well as my respect and cordial appreciation for his constant encouragement to my entomological studies and providing me with the invaluable materials.

## 要 約

和田 薫：スラウエシ島から発見された *Callistethus* 属コガネムシの1新種(鞘翅目)。—— *Callistethus* 属のコガネムシ, *C. andoi* sp. nov. をスラウエシ島西部から記載した。本種はその形態から、スラウエシ島で分化

した *riedeli* group に含まれる種である。スラウエシ島北部～中央部に分布する *C. riedeli* LANSBERGE, 1880 に近縁な種であるが、体色が赤色の強い金属光沢であることや中胸突起の形態等の違いから区別は容易である。

### References

- LANSBERGE, M. G., 1880. Quelques Coléoptères de la Malaisie et de la Papouasie. *Annales Société Entomologique Belgique*, **23**: 120–121.
- MACHATSCHKE, J. W., 1972–74. Scarabaeoidea: Melolonthidae, Rutelinae. In WILCOX, J. A. (ed.), *Coleopterorum Catalogus Supplementa*, (ed. 2), (66): i–ii+1–361[1972]+ i+363–429 [1974]. Junk, s-Gravenhage.
- OHAUS, F., 1926. XXIV. Beitrag zur Kenntnis der Rutelinen (Col. lamell.). *Deutsche Entomologische Zeitschrift (In Berliner Entomologische Zeitschrift)*: 225–239, figs. 1–12.
- WADA, K. 1998. Four new species of the genus *Callistethus* (Coleoptera, Scarabaeidae, Rutelinae) from Sulawesi and re-description of *Callistethus riedeli* LANSBERGE. *Entomological Review of Japan, Osaka*, **52**: 93–101.
- WADA, K. 2000. Two new species and a new subspecies of the genus *Callistethus* (Coleoptera, Scarabaeidae, Rutelinae) from Sulawesi. *Elytra, Tokyo*, **28**: 349–354.

Manuscript received 10 February 2015;  
revised and accepted 20 April 2015.