

Occurrence of *Malthinus serrulatus* (Coleoptera, Cantharidae, Malthininae) on Hachijō Island, the Izu Islands, off Southern Honshu, Japan

Naoki TAKAHASHI¹⁾ and Hideyuki TAKASU²⁾

¹⁾The Kyushu University Museum, Kyushu University, Fukuoka, 812–8581 Japan

²⁾Hachijō Visitor Center, Ôkago 2843, Hachijō-machi, Tokyo, 100–1401 Japan

Malthinus serrulatus N. TAKAHASHI, 2010 was originally described from Amami-Ôshima Island and Tokunoshima Island of the middle Ryukyus, southwestern Japan. Our recent survey revealed for the first time that a *Malthinus* species is distributed on Hachijō Island located in the southern part of Izu Islands, off southern Honshu, and is currently identified with *M. serrulatus*. We will report detailed data concerning this species in the following section.

Malthinus serrulatus N. TAKAHASHI, 2010

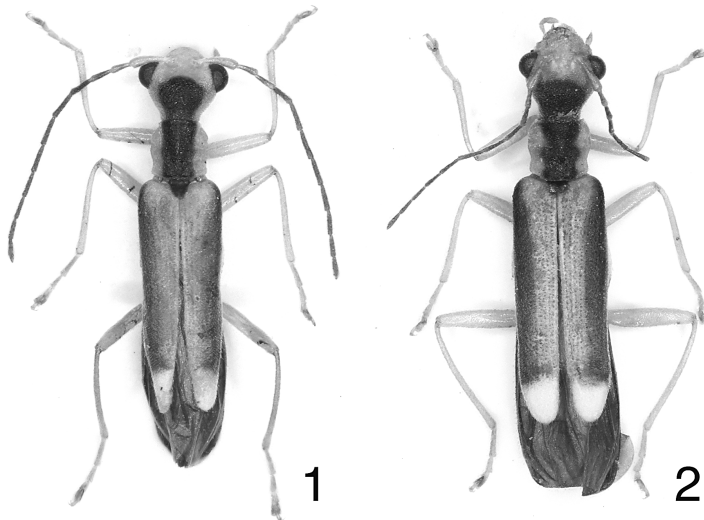
[Japanese name: Amami-kurosuji-tsumaki-jōkai]

(Figs. 1 & 2)

Malthinus serrulatus N. TAKAHASHI, 2010, 61, figs. 5–6, 28–36.

Specimens examined. [Izu Is.: Hachijō Is.] 1 ♂, on *Morus kagayamae* KOIDZ., Botanical Garden, 33°6'42" N, 139°46'59" E, Ôkago, 30.IV.2012 (H. TAKASU); 1 ♀, on *Morus kagayamae* KOIDZ., Ôkago, 30.IV.2012 (H. TAKASU); 1 ♂, Visitor Center, 33°6'42" N, 139°46'59" E, Ôkago, 21.V.2012 (H. TAKASU). (preserved in the collection of N. TAKAHASHI).

Distribution. Japan: Izu Is. (Hachijō Is.) and the middle Ryukyus (Amami-Ôshima Is. and Tokunoshima



Figs. 1–2. *Malthinus serrulatus* N. TAKAHASHI, from Hachijō Is. — 1, Male; 2, female.

Is.). New to Hachijō Island.

Notes. Although morphological differences are obscure in general appearances between materials collected from Hachijō Is. and Amami-Ōshima Is., the terminalia, particularly the female terminalia of the Hachijō specimens, seem slightly different in configuration from that of the Amami-Ōshima specimens. We here regard the specimens collected on Hachijō Island as conspecific with this species until more materials are available.

Reference

TAKAHASHI, N., 2010. Notes on *Malthinus mucoreus* (Coleoptera: Cantharidae), with descriptions of two new related species from the Ryukyus, Southwest Japan. *Zootaxa*, **2563**: 53–68.

Manuscript received 15 April 2015;
revised and accepted 25 May 2015.