

A New Record of *Hypulus cingulatus* LEWIS, 1895 (Coleoptera, Melandryidae) from Taiwan

Yun HISAO¹⁾ and Hiroyuki MURAKAMI²⁾

¹⁾Department of Entomology, National Taiwan University, No. 27, Lane 113, Sec. 4,
Roosevelt Rd., Taipei 10617, Taiwan

E-mail: yunhsiao@outlook.com

²⁾Entomological Laboratory, Faculty of Agriculture, Ehime University,
Tarumi 3–5–7, Matsuyama, 790–8566 Japan

E-mail: hiroyuki068@gmail.com

The family Melandryidae LEACH, 1815 was known as false darkling beetles and represented by 290 species of 24 genera with variously shaped appearances and a worldwide distribution (POLLOCK, 2002). Up to present, only seven species of six genera, *Dicraeomorpha*, *Ivania*, *Mimoserropalpus*, *Osphyia*, *Phloeotrinus* and *Serropalpus*, in this family have been recorded in Taiwan (ISHIKAWA *et al.*, 2007; NIKITSKY & POLLOCK, 2008).

Recently, the first author collected one specimen by sweeping in Meifeng located in the central area of Taiwan at intermediate altitude. After careful comparison, we identified the specimen as *Hypulus cingulatus* LEWIS, 1895, which was characterized by the elongated body; two golden-gray transverse bands in the middle and near the apex of elytra respectively; elytra are dark red in anterior half, and black in the area between two golden-gray bands and in the apex (LEWIS, 1895). This species has been known from Honshu, Kyushu and Yakushima Island in Japan (SASAJI, 1985). In this report, *H. cingulatus* is shown below as a new record in Taiwan.

The voucher specimen will be deposited in the National Museum of Natural Science, Taichung City, Taiwan (NMNS) and the compared specimens were deposited in Ehime University Museum, Matsuyama, Japan (EUMJ). The habitus photo was taken with a Nikon COOLPIX P310 digital camera. Body length was measured from the anterior margin of clypeus to the apices of elytra and width was measured at the widest part of both elytra.

Hypulus cingulatus LEWIS, 1895

(Fig. 1)

Hypulus cingulatus LEWIS, 1895: 269.

Specimen examined. 1 ♀ (NMNS), Meifeng, Nantou County, Taiwan, 26.IV.2015, Y. HISAO leg.

Comparative specimens. 1 ex. (EUMJ), Mt. Kasugayama, Nara-shi, Nara Pref., Japan, 3.IV.1992, H. YOSHITOMI leg.; 2 exs. (EUMJ), Ohyakuzure, Shizuoka-shi, Shizuoka Pref., Japan, 30.V.1999, T. KURIHARA leg.

Measurement. Body length: 9.0 mm; body width: 2.0 mm.

Distribution. Japan: Honshu, Kyushu and Yakushima Is.; Taiwan: Meifeng, new record.

Acknowledgements

The first author wishes to express his heartfelt thanks to Prof. Ping-Shih YANG (Department of Entomology, National Taiwan University, Taiwan) for giving permission to use the equipment in his laboratory and the funding, and his thanks are also due to Mr. Han-Jung HISAO and Mrs. Mei-Hui ZHOU for their various assistance in the field trip. The second author expresses his continuing gratitude to Prof. Kazuhiko KONISHI and Assoc. Prof. Hiroyuki YOSHITOMI (both EUMJ).

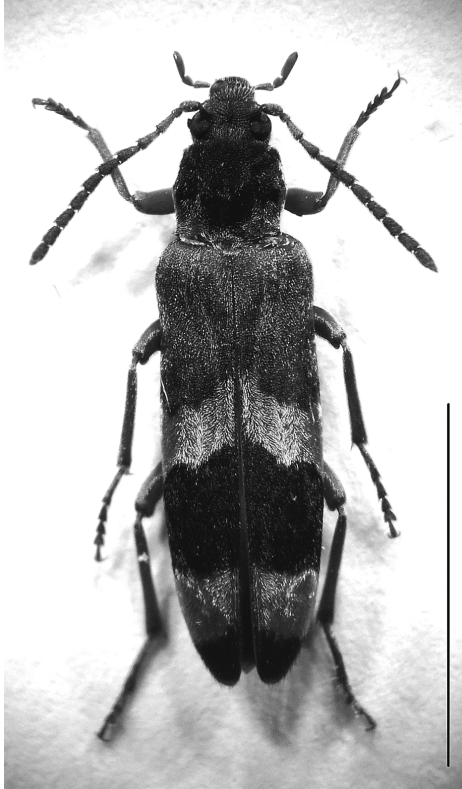


Fig. 1. Habitus of *Hypulus cingulatus* LEWIS, 1895 from Meifeng. Scale: 5.0 mm

References

- ISHIKAWA, Y., R. TOYOSHIMA & C.-F. LEE, 2007. A new species of the genus *Dircaeomorpha* (Coleoptera, Melandryidae) from Taiwan. *Elytra, Tokyo*, **35**: 177–181.
- LEWIS, G., 1895. On the Cistelidae and other heteromorous species of Japan. *The Annals and Magazine of Natural History*, **15** (6): 250–278, 422–448, pl. 8.
- NIKITSKY, N. B., & D. A. POLLOCK, 2008. Family Melandryidae. Pp. 64–73. In LÖBL, I., & A. SMETANA (eds.), *Catalogue of Palaearctic Coleoptera*, **5**: 670 pp. Apollo Books, Stenstrup.
- POLLOCK, D. A., 2002. Melandryidae LEACH, 1815. Pp. 417–422. In ARNETT, R. H. jr., M. C. THOMAS, P. E. SKELLY & J. H. FRANK (eds.), *American Beetles Polyphaga: Scarabaeoidea through Curculionoidea*, **2**. 861 pp. Boca, Raton, London, New York, Washington, CRC Press.
- SASAJI, H., 1985. Melandryidae. Pp. 358–374, pls. 61–64. In KUROSAWA, Y., S. HISAMATSU & H. SASAJI (eds.), *The Coleoptera of Japan in Color*, **3**. 500 pp, 72 pls. Hoikusha, Osaka. (In Japanese.)

Manuscript received 7 June 2015;
revised and accepted 26 June 2015.