

## Occurrence of *Epicyltus itoi* NISATO (Coleoptera, Cerambycidae) in Mainland China

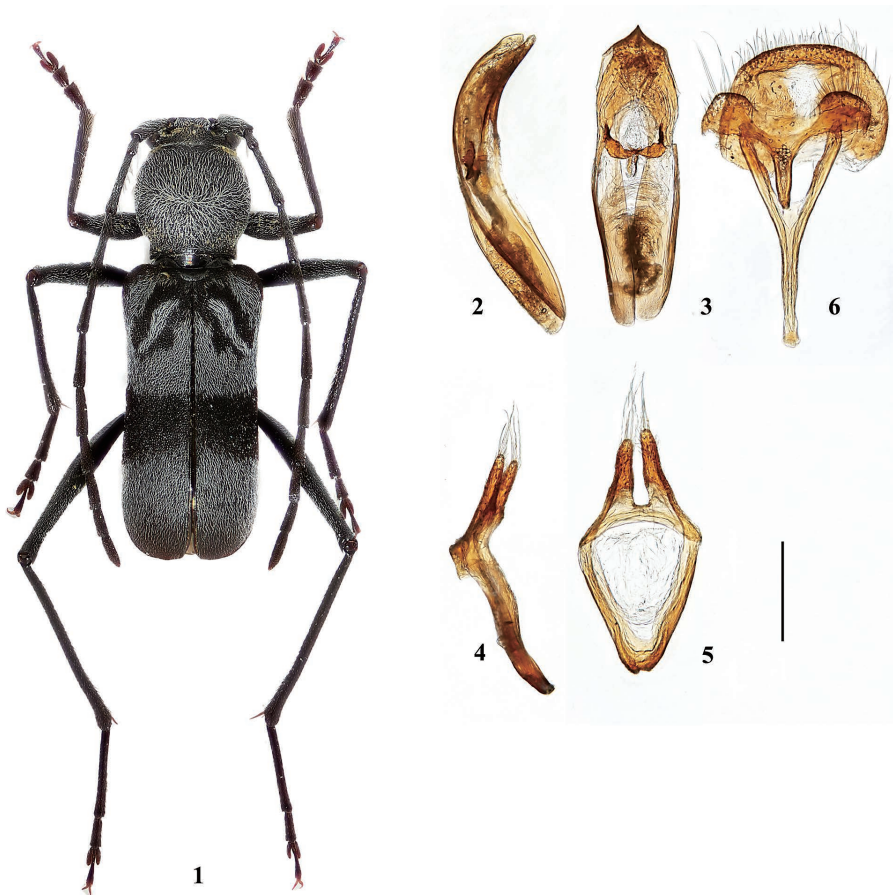
Tatsuya NISATO<sup>1)</sup> and Bin LIU<sup>2)</sup>

<sup>1)</sup>Bioindicator Co., Ltd., Nikkô-Kagurazaka Building, Iwato-chô 18, Shinjuku, Tokyo, 162–0832 Japan

<sup>2)</sup>Bin Insect Taxonomy Studio, No.16, Xizhaosi Street, Dongcheng District, Beijing 100061, P. R. China

In the course of recent field surveys, the second author unexpectedly found a single male specimen of *Epicyltus itoi* NISATO from Mt. Dayaoshan, Guangxi Zhuang Autonomous Region, southwestern China. This clytine beetle has so far been known only from central Taiwan and very few additional specimens have been collected after the original description in spite of the active field surveys by Chinese longicornists in the past 30 years.

In this short report, we will report *E. itoi* as the first record from Mainland China.



Figs. 1–6. *Epicyltus itoi* NISATO, ♂ from Mt. Dayaoshan, Laibin City, Guangxi Zhuang Autonomous Region, China. — 1, Habitus; 2, median lobe, lateral view; 3, ditto, dorsal view; 4, tegmen, lateral view; 5, ditto, dorsal view; 6, 8th abdominal segment, ventral view. Scale: 0.25 mm.

***Epiclytus itoi*** NIISATO, 1981

(Figs. 1–6)

*Epiclytus itoi* NIISATO, 1981: 33, figs. 1 a, 1 b, 2A a–b, 3A a–c, a–b'; type locality: Lienhwachih, Yuchih, Nantou, Taiwan (holotype).

*Specimens examined.* [Mainland China] 1 ♂, Mt. Dayaoshan, 1,338 m, E110°11'01"/N24°6'26", Pingban Tun, Daojiang Village, Changdong Township, Jinxiu County, Laibin City, Guangxi Zhuang Autonomous Region, China, 26.IV.2015, Jinteng ZHAO leg. (in Bin Insect Taxonomy Studio). [Taiwan] 2 ♂♂, 1 ♀ (paratypes), Lienhwachih, Yuchih, Nantou, Taiwan, 24–25.III.1980, T. NIISATO leg. (in T. NIISATO private collection).

*Distribution.* China: Taiwan and Guangxi Zhuang Autonomous Region (new record).

*Notes.* The single male specimen examined is quite identical with the type series (2 ♂♂ and 1 ♀ paratypes) of *Epiclytus itoi* from central Taiwan at least in external morphology including the pubescent maculations. The male genital organs between these two populations are slightly different. For instance, the shape of the apical part of median lobe is more strongly pointed in the specimen from Guangxi than that of Taiwan, the type locality. Though regarding the continental population should be treated as a new subspecies, additional specimens are expected to be collected from Mainland China in near future to determine its taxonomic identity.

**Reference**

NIISATO, T., 1981. A new species of the genus *Epiclytus* GRESSITT from central Taiwan (Coleoptera, Cerambycidae). *Elytra*, Tokyo, **8**: 33–36.

Manuscript received 8 March 2017;  
revised and accepted 20 March 2017.